


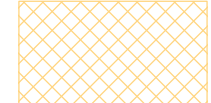

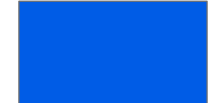
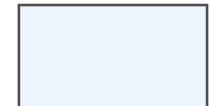


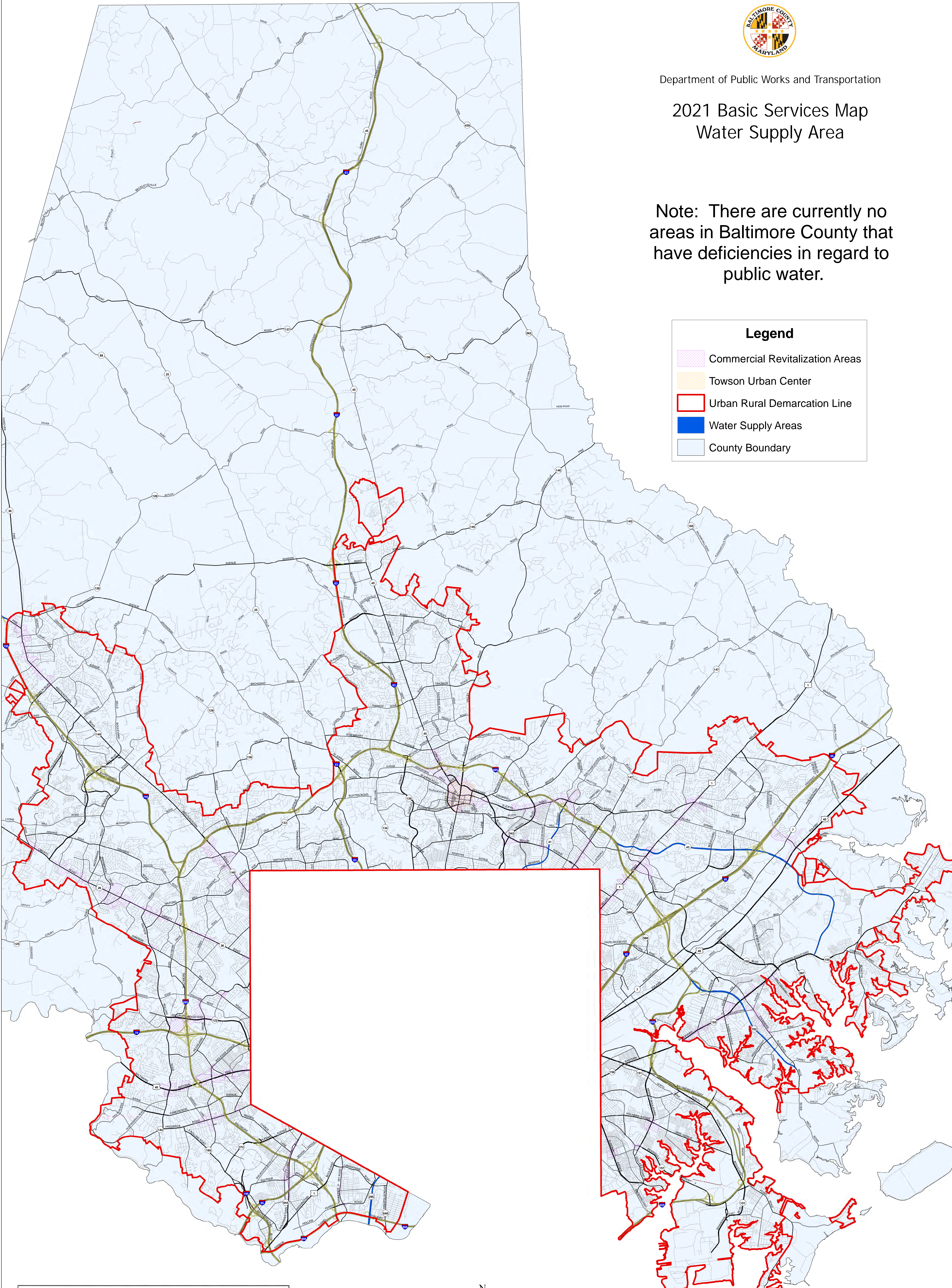
Department of Public Works and Transportation

# 2021 Basic Services Map Water Supply Area

**Note:** There are currently no areas in Baltimore County that have deficiencies in regard to public water.

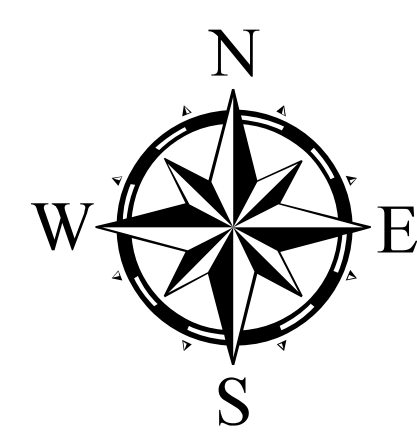
**Legend**

-  Commercial Revitalization Areas
-  Towson Urban Center
-  Urban Rural Demarcation Line
-  Water Supply Areas
-  County Boundary

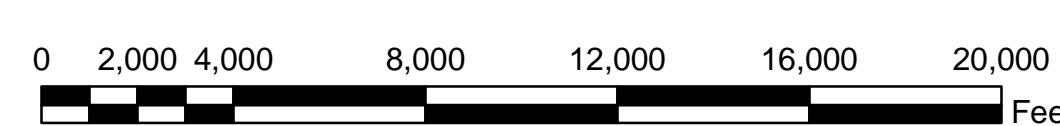


THIS MAP HAS BEEN ENACTED UNDER BILL NUMBER 32-21 AND IS PART OF THE BALTIMORE COUNTY ZONING REGULATIONS, 1955, AS AMENDED BY THE BILL ADOPTED MAY 7, 2021. EFFECTIVE MAY 17, 2021.

*Julius E. Jones Jr.*  
COUNTY COUNCIL OF BALTIMORE COUNTY



SCALE 1 INCH = 4,000 Feet



NOTE: The interpretation of the Basic Services Maps are subject to exceptions provided for in the Baltimore County Zoning Regulations, Article 4A Growth Management, Section 4A02 Basic Services Maps. These exceptions include those mapped in the County's geographic information system (GIS); the Urban and Rural Demarcation Line (URDL), Commercial Revitalization Districts (4A02.4.E.1.), and the Towson Urban Center (4A02.4.E.1.). The Towson Urban Center (Downtown Towson District) exists in the Master Plan 2020 in the Land Management Areas feature class.

Feature Class	Production Dates
Water Supply Area	.....2021
Commercial Revitalization Districts	.....2020
Towson Urban Center	.....2011
Urban Rural Demarcation Line	.....2012
Roads	.....2021
County Boundary	.....2008

Produced by the Baltimore County Department of Public Works and Transportation  
North American Datum 1983 HARN, U.S. Survey Foot  
Published August 2, 2021