



Department of Public Works and Transportation

2021 Basic Services Map Transportation Zones

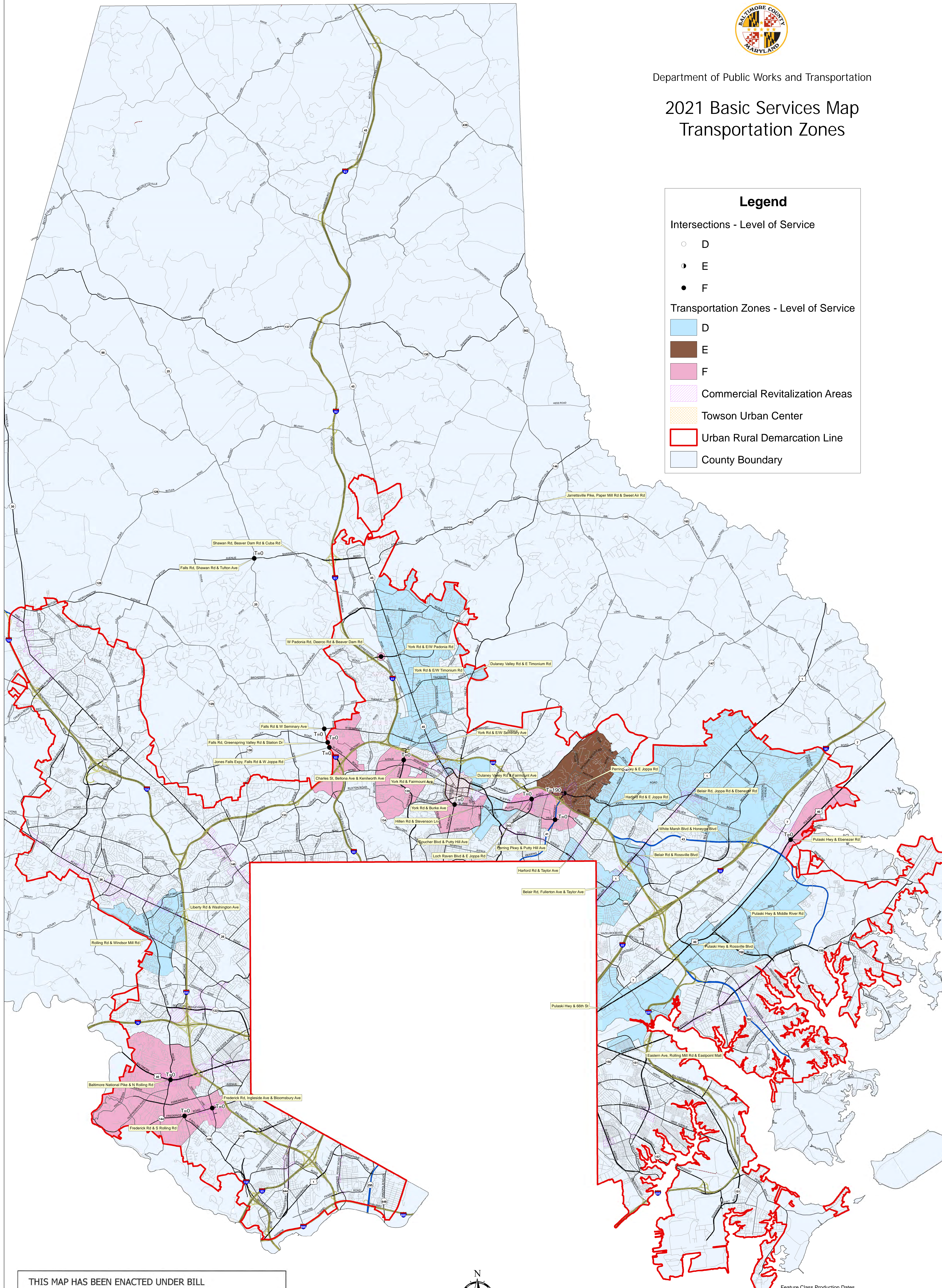
Legend

Intersections - Level of Service

- D
- E
- F

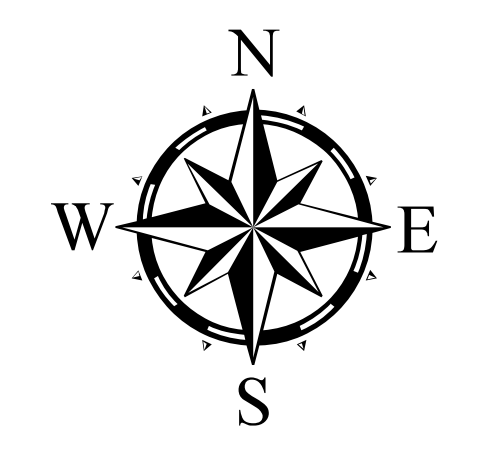
Transportation Zones - Level of Service

- D
- E
- F
- Commercial Revitalization Areas
- Towson Urban Center
- Urban Rural Demarcation Line
- County Boundary

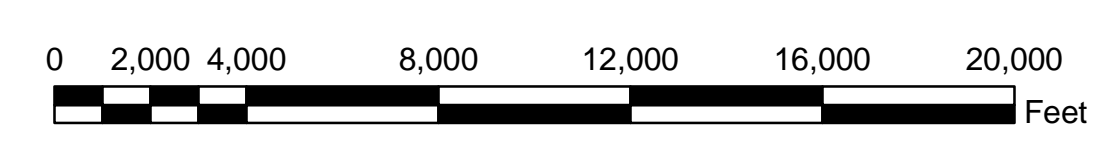


THIS MAP HAS BEEN ENACTED UNDER BILL NUMBER 32-21 AND IS PART OF THE BALTIMORE COUNTY ZONING REGULATIONS, 1955, AS AMENDED BY THE BILL ADOPTED MAY 7, 2021 EFFECTIVE MAY 17, 2021

Julius E. Jones Jr.
COUNTY COUNCIL OF BALTIMORE COUNTY



SCALE 1 INCH = 4,000 Feet



NOTE: The interpretation of the Basic Services Maps are subject to exceptions provided for in the Baltimore County Zoning Regulations, Article 4A Growth Management, Section 4A02 Basic Services Maps. These exceptions include those mapped in the County's geographic information system (GIS); the Urban and Rural Demarcation Line (URDL); Commercial Revitalization Districts (4A02.4.E.1.i), and the Towson Urban Center (4A02.4.E.1.i). The Towson Urban Center (Downtown Towson District) exists in the Master Plan 2020 in the Land Management Areas feature class.

Feature Class	Production Dates
Transportation Zones2021
Intersections2021
Commercial Revitalization Districts2020
Towson Urban Center2011
Urban Rural Demarcation Line2012
Roads2021
County Boundary2008

Produced by the Baltimore County Department of Public Works and Transportation
North American Datum 1983 HARN, U.S. Survey Foot
Published August 2, 2021