

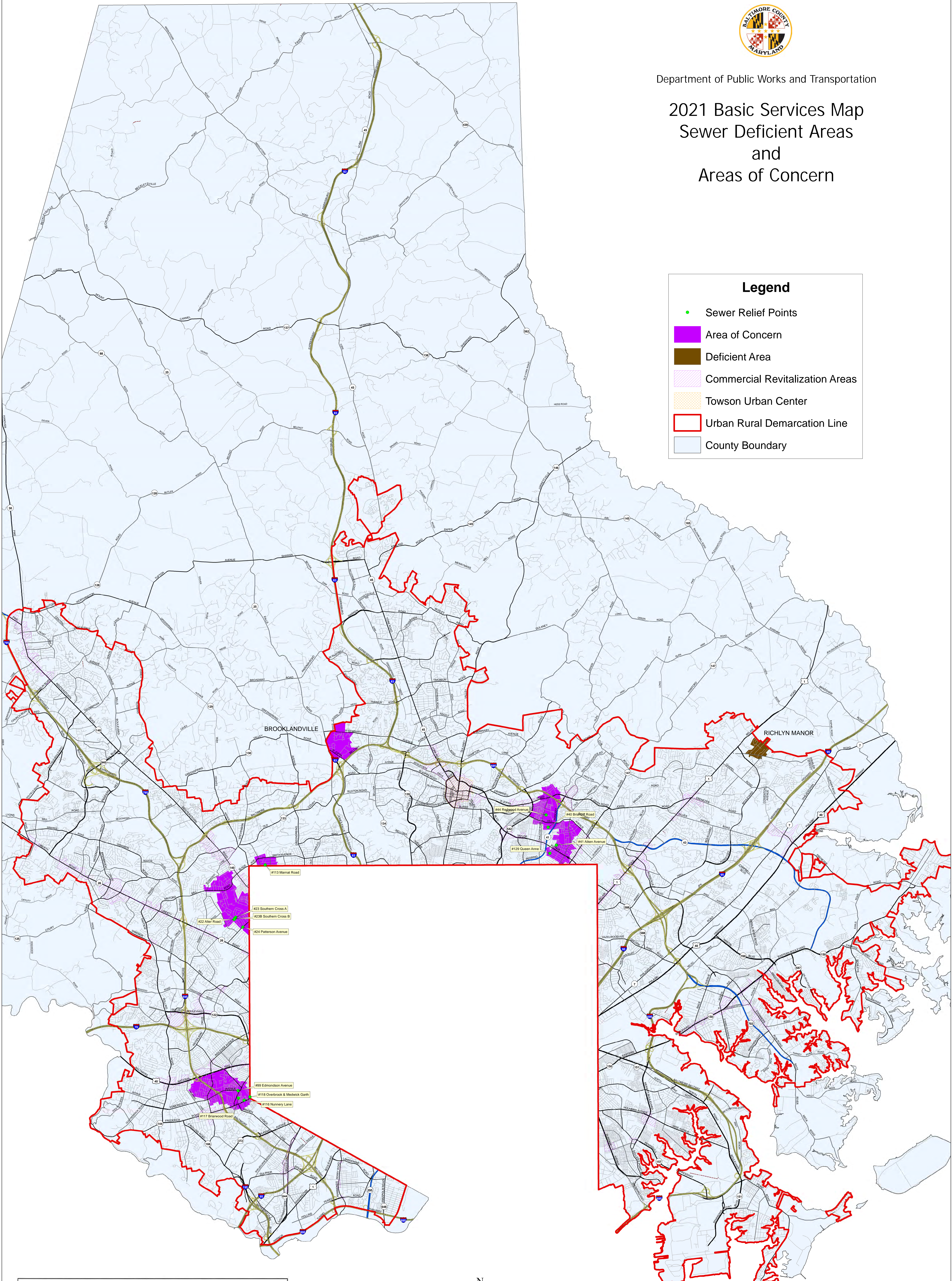


Department of Public Works and Transportation

# 2021 Basic Services Map Sewer Deficient Areas and Areas of Concern

**Legend**

- Sewer Relief Points
- Area of Concern
- Deficient Area
- Commercial Revitalization Areas
- Towson Urban Center
- Urban Rural Demarcation Line
- County Boundary

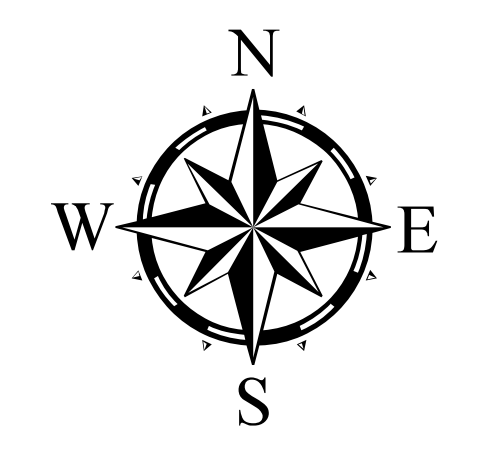


**Inset Map Labels:**

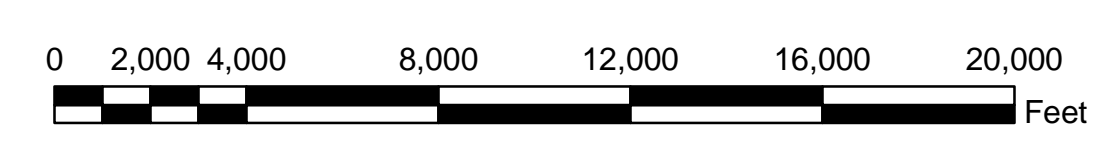
- #113 Marat Road
- #23 Southern Cross A
- #238 Southern Cross B
- #22 Aler Road
- #24 Patterson Avenue
- #99 Edmondson Avenue
- #118 Overbrook & Medwick Garth
- #116 Nunnery Lane
- #117 Elmwood Road
- #40 Brogden Road
- #129 Queen Anne
- #41 Alton Avenue

THIS MAP HAS BEEN ENACTED UNDER BILL NUMBER 32-21 AND IS PART OF THE BALTIMORE COUNTY ZONING REGULATIONS, 1955, AS AMENDED BY THE BILL ADOPTED MAY 7, 2021. EFFECTIVE MAY 17, 2021.

*Julius E. Jones Jr.*  
COUNTY COUNCIL OF BALTIMORE COUNTY



SCALE 1 INCH = 4,000 Feet



NOTE: The interpretation of the Basic Services Maps are subject to exceptions provided for in the Baltimore County Zoning Regulations, Article 4A Growth Management, Section 4A02 Basic Services Maps. These exceptions include those mapped in the County's geographic information system (GIS); the Urban and Rural Demarcation Line (URDL), Commercial Revitalization Districts (4A02.4.E.1.), and the Towson Urban Center (4A02.4.E.1.). The Towson Urban Center (Downtown Towson District) exists in the Master Plan 2020 in the Land Management Areas feature class.

Feature Class Production Dates

Sewer Relief Points	.....2021
Sewer Areas	.....2021
Commercial Revitalization Districts	.....2020
Towson Urban Center	.....2011
Urban Rural Demarcation Line	.....2012
Roads	.....2021
County Boundary	.....2008

Produced by the Baltimore County Department of Public Works and Transportation  
North American Datum 1983 HARN, U.S. Survey Foot  
Published August 2, 2021