



Department of Public Works

2019 Basic Services Map Transportation Zones

Legend

Intersections

Level Of Service

- D
- ◐ E
- F

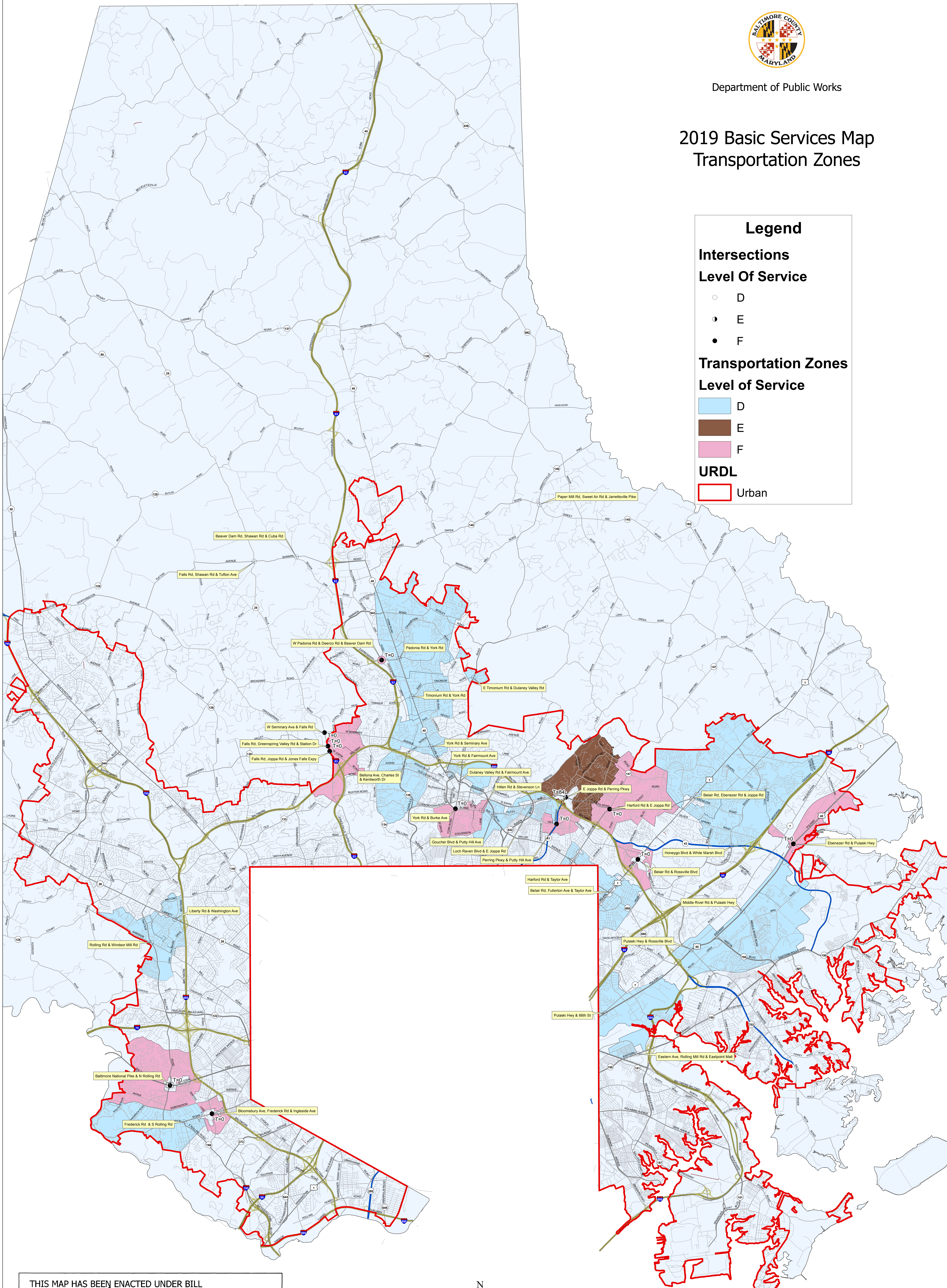
Transportation Zones

Level of Service

- D
- E
- F

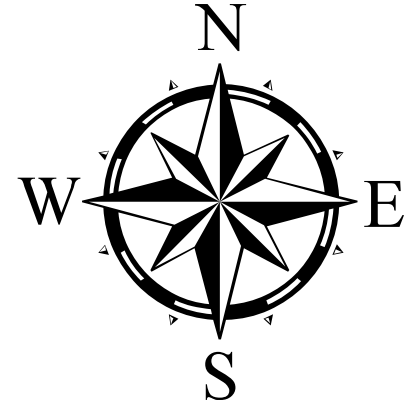
URDL

- Urban



THIS MAP HAS BEEN ENACTED UNDER BILL NUMBER 12-19 AND IS PART OF THE BALTIMORE COUNTY ZONING REGULATIONS, 1955, AS AMENDED BY THE BILL ADOPTED 5/6/19 EFFECTIVE 5/20/19.

Thomas E. Clark
COUNTY COUNCIL OF BALTIMORE COUNTY



Scale 1 inch = 4,000 feet
0 2,000 4,000 8,000 12,000 16,000 Feet

Feature Class Production Dates
 Transportation Zones 2019
 Intersections 2019
 Urban Rural Demarcation Line 2012
 Roads 2019
 County Boundary 2008
 Produced by the Baltimore County Department of Public Works
 North American Datum 1983 HARN, U.S. Survey Foot
 Published May 16, 2019

This map contains modifications to the Transportation Zones based on County Council Resolutions Number 9-19 and 12-19.