

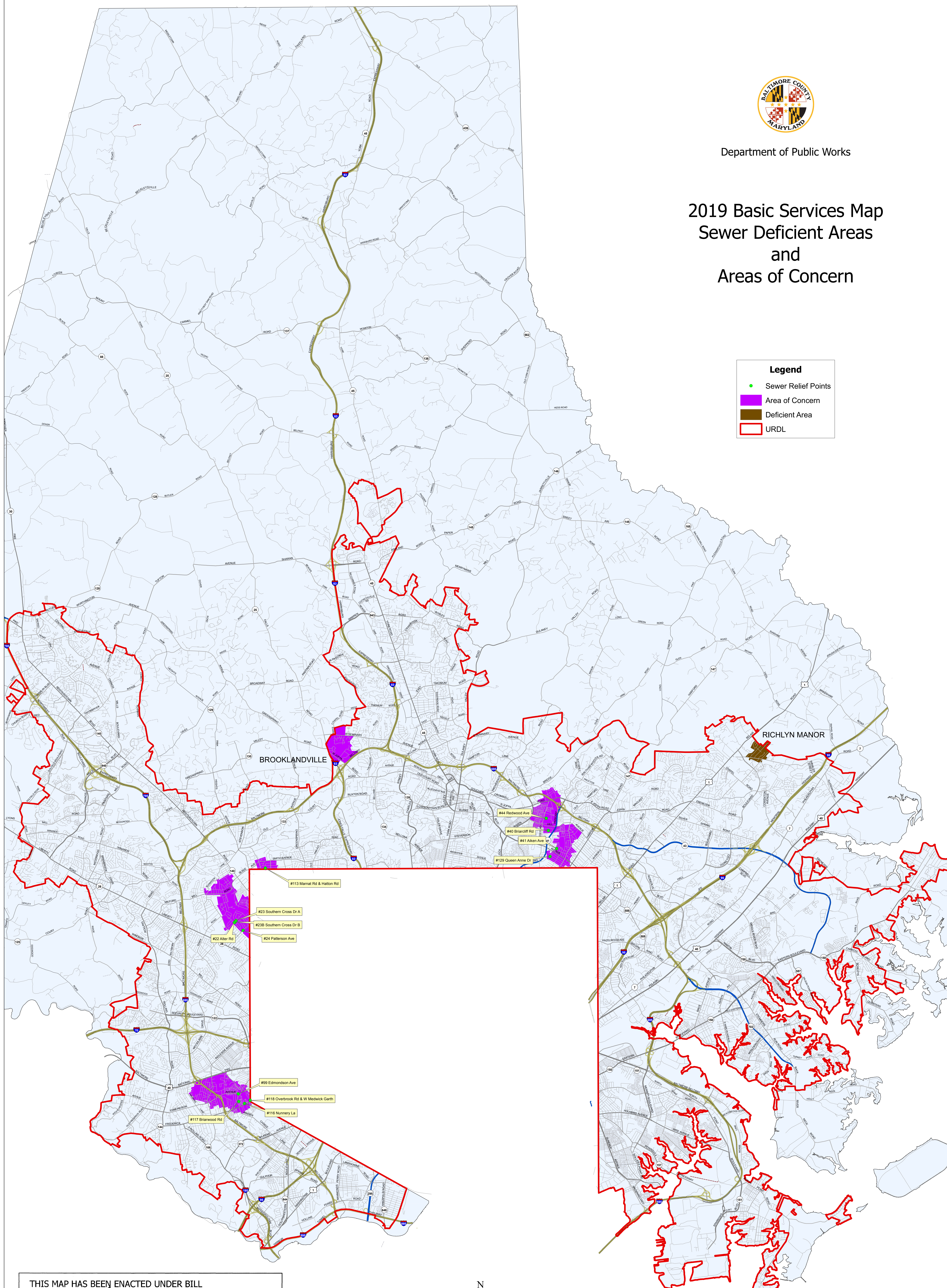


Department of Public Works

2019 Basic Services Map Sewer Deficient Areas and Areas of Concern

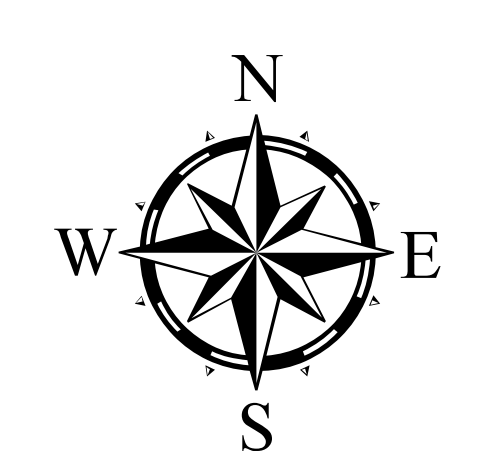
Legend

- Sewer Relief Points
- Area of Concern
- Deficient Area
- URDL



THIS MAP HAS BEEN ENACTED UNDER BILL NUMBER 12-19 AND IS PART OF THE BALTIMORE COUNTY ZONING REGULATIONS, 1955, AS AMENDED BY THE BILL ADOPTED 5/6/19 EFFECTIVE 5/20/19.

Thomas E. Cleary
COUNTY COUNCIL OF BALTIMORE COUNTY



Scale 1 inch = 4,000 feet
0 2,000 4,000 8,000 12,000 16,000 Feet

Feature Class	Production Dates
Sewer Relief Points	2019
Sewer Areas	2019
Urban Rural Demarcation Line	2012
Roads	2019
County Boundary	2008

Produced by the Baltimore County Department of Public Works
North American Datum 1983 HARN, U.S. Survey Foot
Published May 16, 2019