



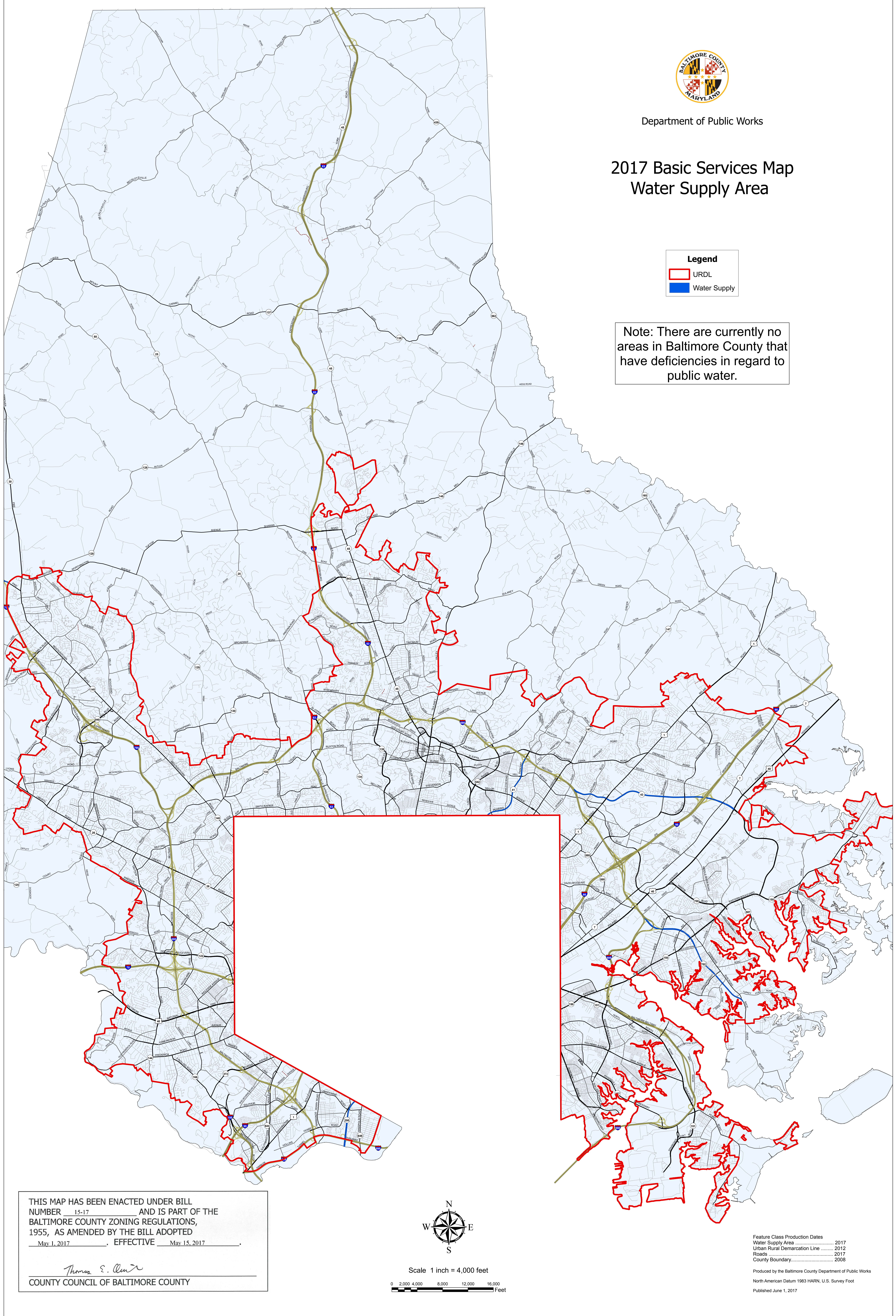
Department of Public Works

2017 Basic Services Map Water Supply Area

Legend

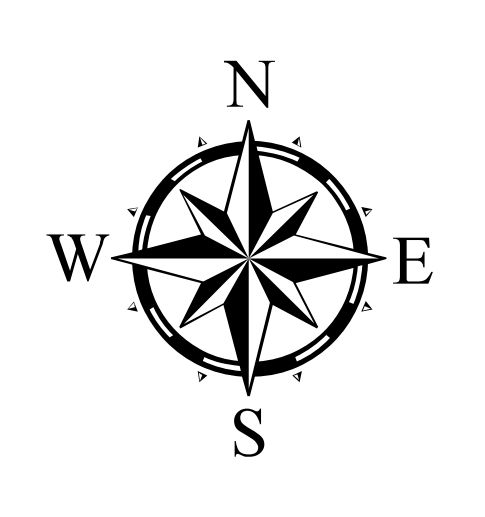
- URDL
- Water Supply

Note: There are currently no areas in Baltimore County that have deficiencies in regard to public water.



THIS MAP HAS BEEN ENACTED UNDER BILL NUMBER 15-17 AND IS PART OF THE BALTIMORE COUNTY ZONING REGULATIONS, 1955, AS AMENDED BY THE BILL ADOPTED May 1, 2017. EFFECTIVE May 15, 2017.

Thomas E. Clun
COUNTY COUNCIL OF BALTIMORE COUNTY



Scale 1 inch = 4,000 feet

0 2,000 4,000 8,000 12,000 16,000 Feet

Feature Class Production Dates
 Water Supply Area2017
 Urban Rural Demarcation Line2012
 Roads2017
 County Boundary.....2008

Produced by the Baltimore County Department of Public Works
 North American Datum 1983 HARN, U.S. Survey Foot
 Published June 1, 2017