

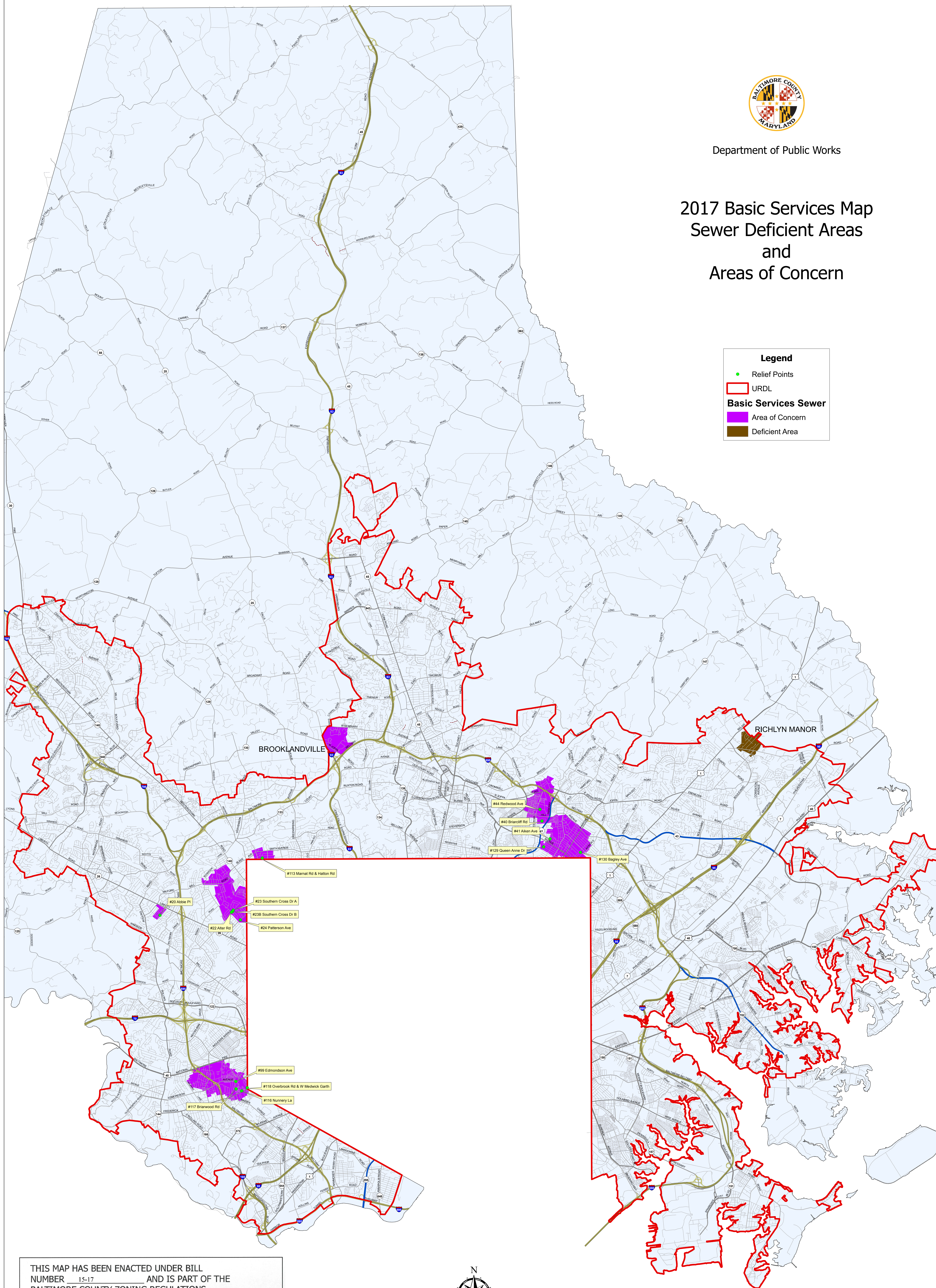


Department of Public Works

2017 Basic Services Map Sewer Deficient Areas and Areas of Concern

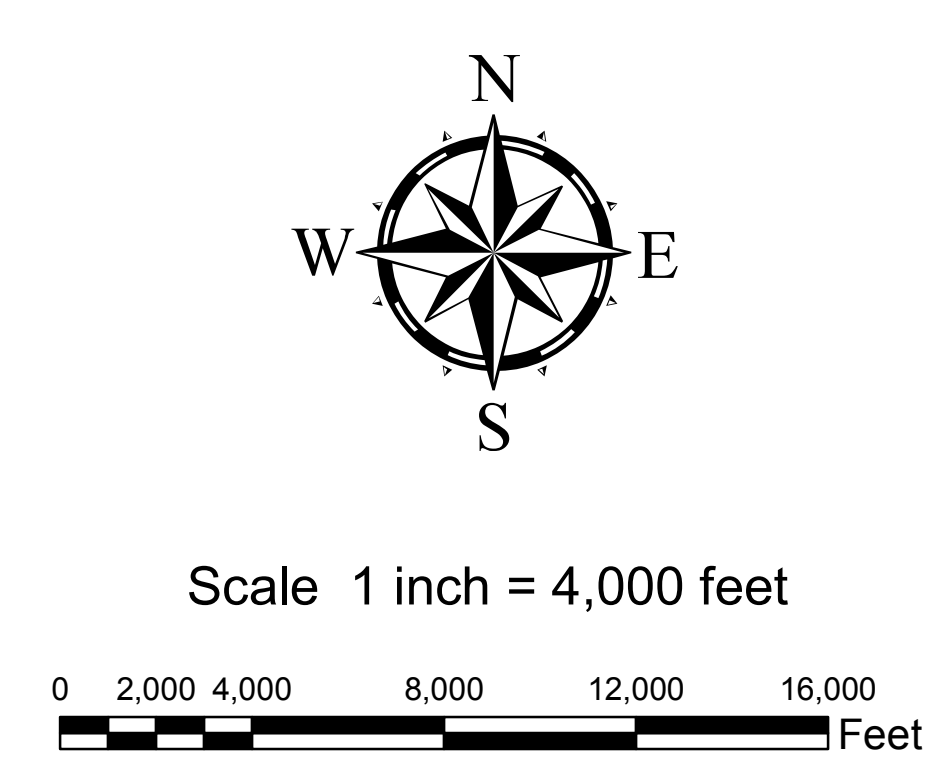
Legend

- Relief Points
- URDL
- Basic Services Sewer**
- Area of Concern
- Deficient Area



THIS MAP HAS BEEN ENACTED UNDER BILL NUMBER 15-17 AND IS PART OF THE BALTIMORE COUNTY ZONING REGULATIONS, 1955, AS AMENDED BY THE BILL ADOPTED May 1, 2017. EFFECTIVE May 15, 2017.

Thomas E. Curran
COUNTY COUNCIL OF BALTIMORE COUNTY



Feature Class Production Dates
 Sewer Areas 2017
 Urban Rural Demarcation Line 2012
 Roads 2017
 County Boundary 2008

Produced by the Baltimore County Department of Public Works
 North American Datum 1983 HARN, U.S. Survey Foot
 Published June 1, 2017