

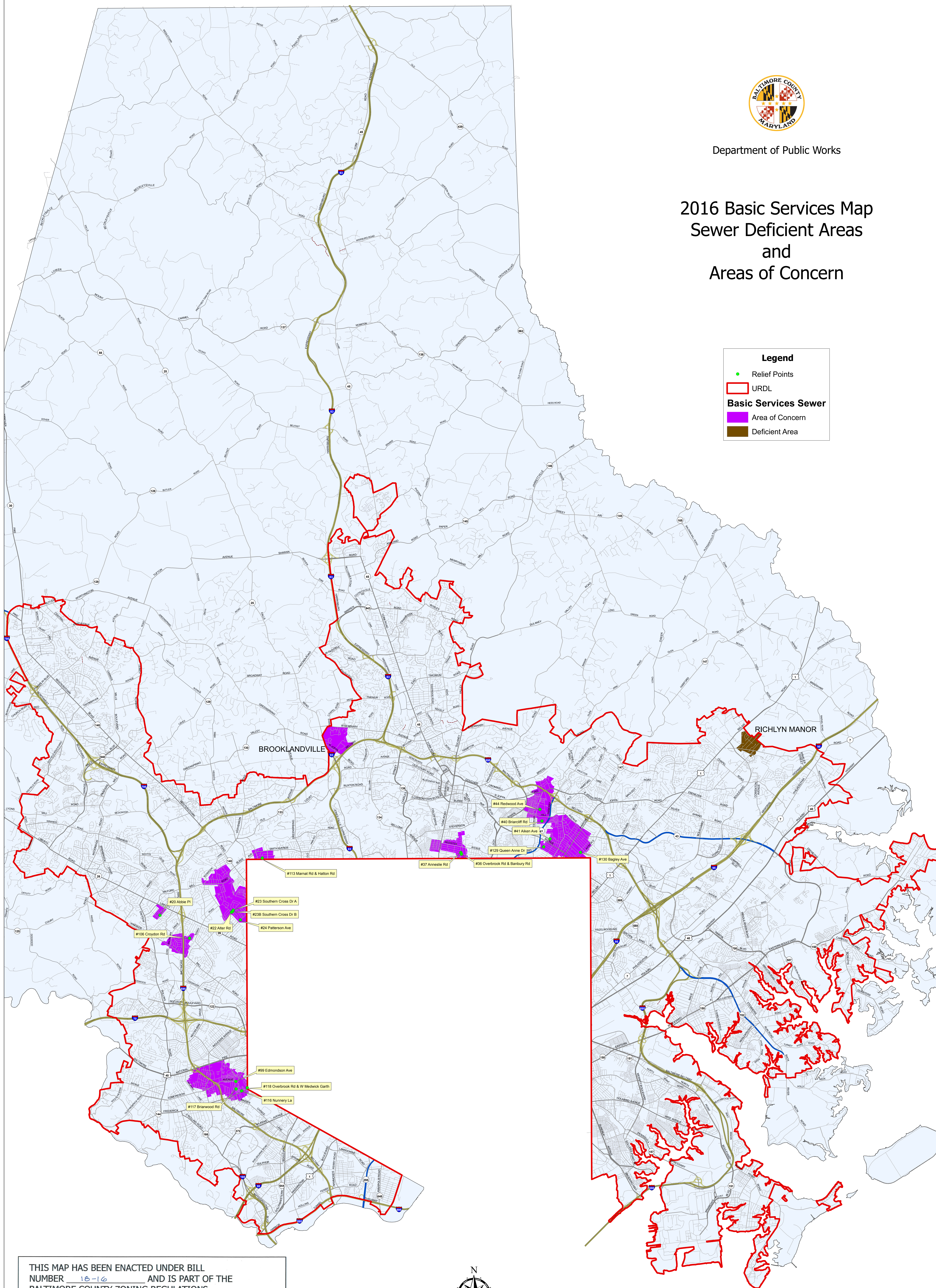


Department of Public Works

# 2016 Basic Services Map Sewer Deficient Areas and Areas of Concern

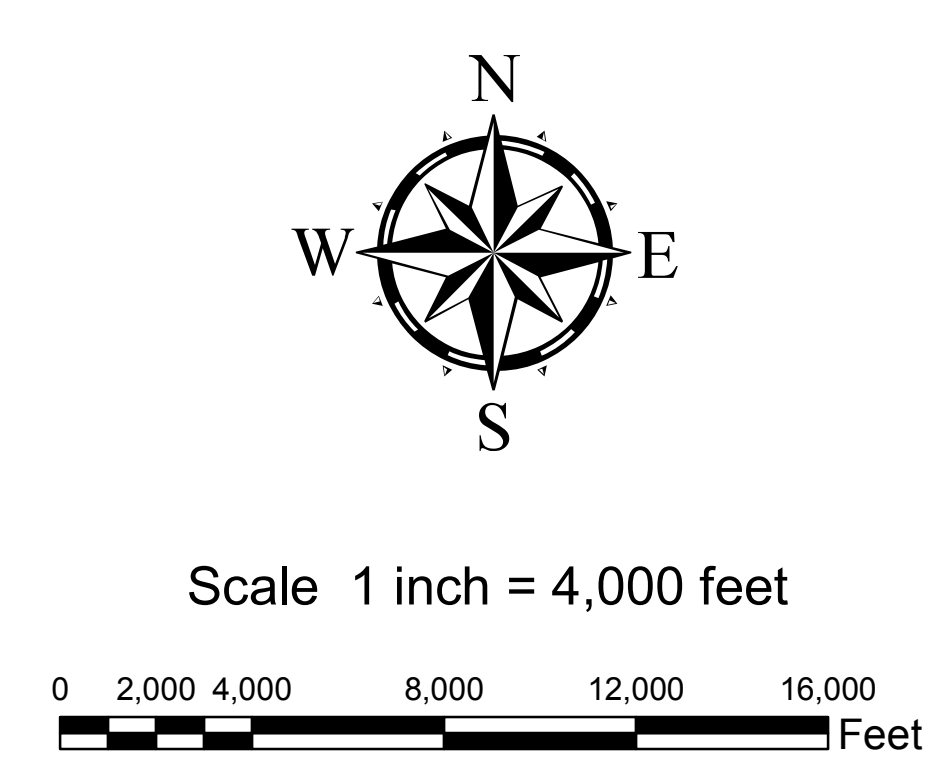
**Legend**

- Relief Points
- URDL
- Basic Services Sewer**
- Area of Concern
- Deficient Area



THIS MAP HAS BEEN ENACTED UNDER BILL NUMBER 18-16 AND IS PART OF THE BALTIMORE COUNTY ZONING REGULATIONS, 1955, AS AMENDED BY THE BILL ADOPTED May 2, 2016. EFFECTIVE May 16, 2016.

*Tina L. Almond*  
 COUNTY COUNCIL OF BALTIMORE COUNTY



Feature Class Production Dates  
 Sewer Areas ..... 2016  
 Urban Rural Demarcation Line ..... 2012  
 Roads ..... 2016  
 County Boundary ..... 2008

Produced by the Baltimore County Department of Public Works  
 North American Datum 1983 HARN, U.S. Survey Foot  
 Published June 3, 2016