



Department of Public Works

# 2015 Basic Services Map Transportation Zones

**Legend**

**Intersections**

**Level Of Service**

- D
- ◐ E
- F

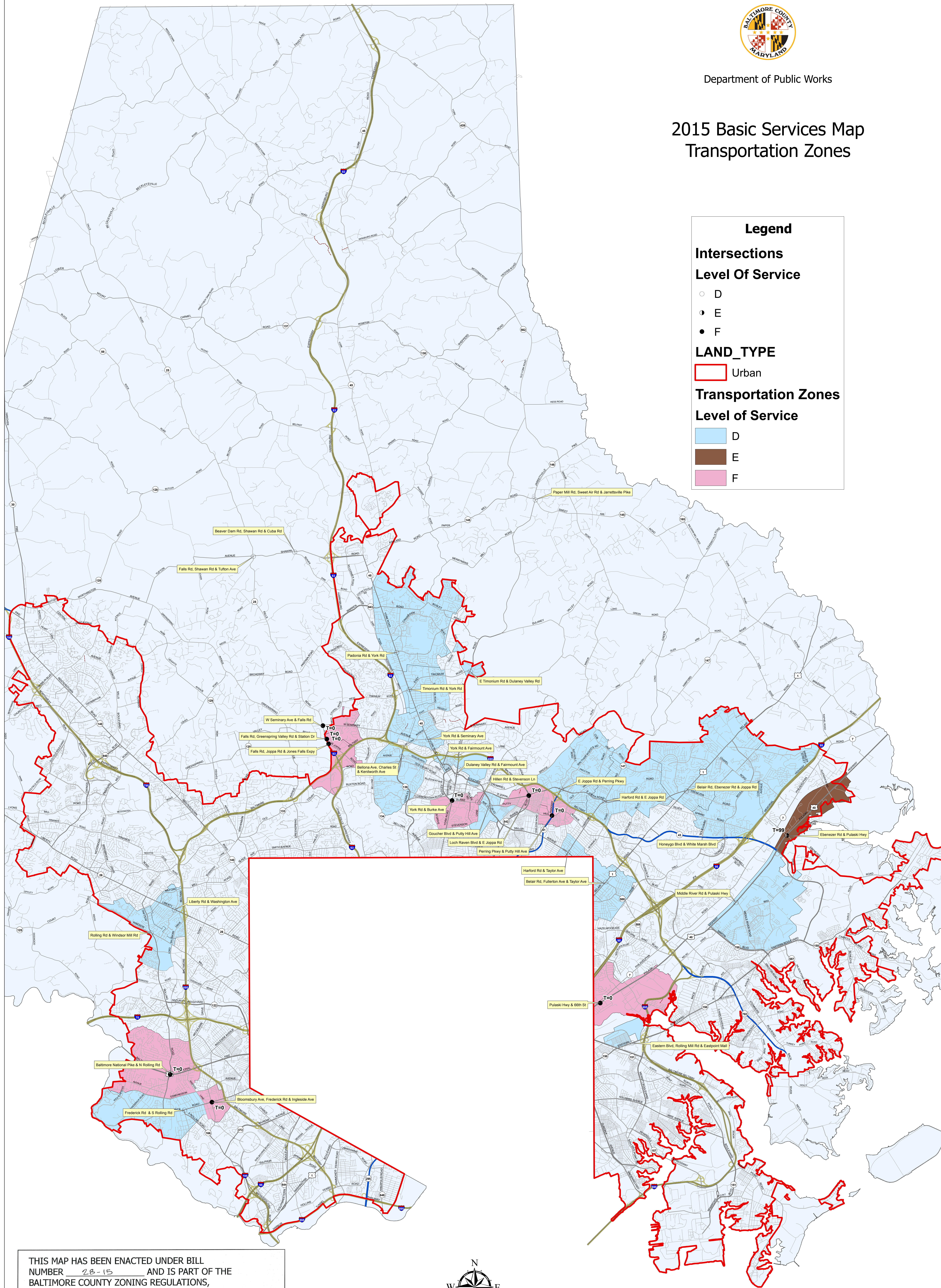
**LAND\_TYPE**

- Urban

**Transportation Zones**

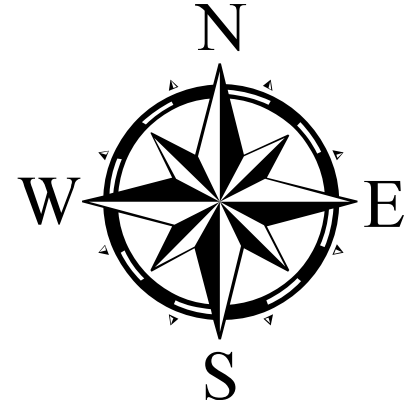
**Level of Service**

- D
- E
- F



THIS MAP HAS BEEN ENACTED UNDER BILL NUMBER 28-15 AND IS PART OF THE BALTIMORE COUNTY ZONING REGULATIONS, 1955, AS AMENDED BY THE BILL ADOPTED May 4, 2015. EFFECTIVE May 18, 2015.

*Cathy A. Bevin*  
COUNTY COUNCIL OF BALTIMORE COUNTY



Scale 1 inch = 4,000 feet  
0 2,000 4,000 8,000 12,000 16,000 Feet

Feature Class Production Dates  
 Transportation Zones ..... 2015  
 Intersections ..... 2015  
 Urban Rural Demarcation Line ..... 2012  
 Roads ..... 2014  
 County Boundary ..... 2008

Produced by the Baltimore County Department of Public Works  
 North American Datum 1983 HARN, U.S. Survey Foot  
 Published May 22, 2015