

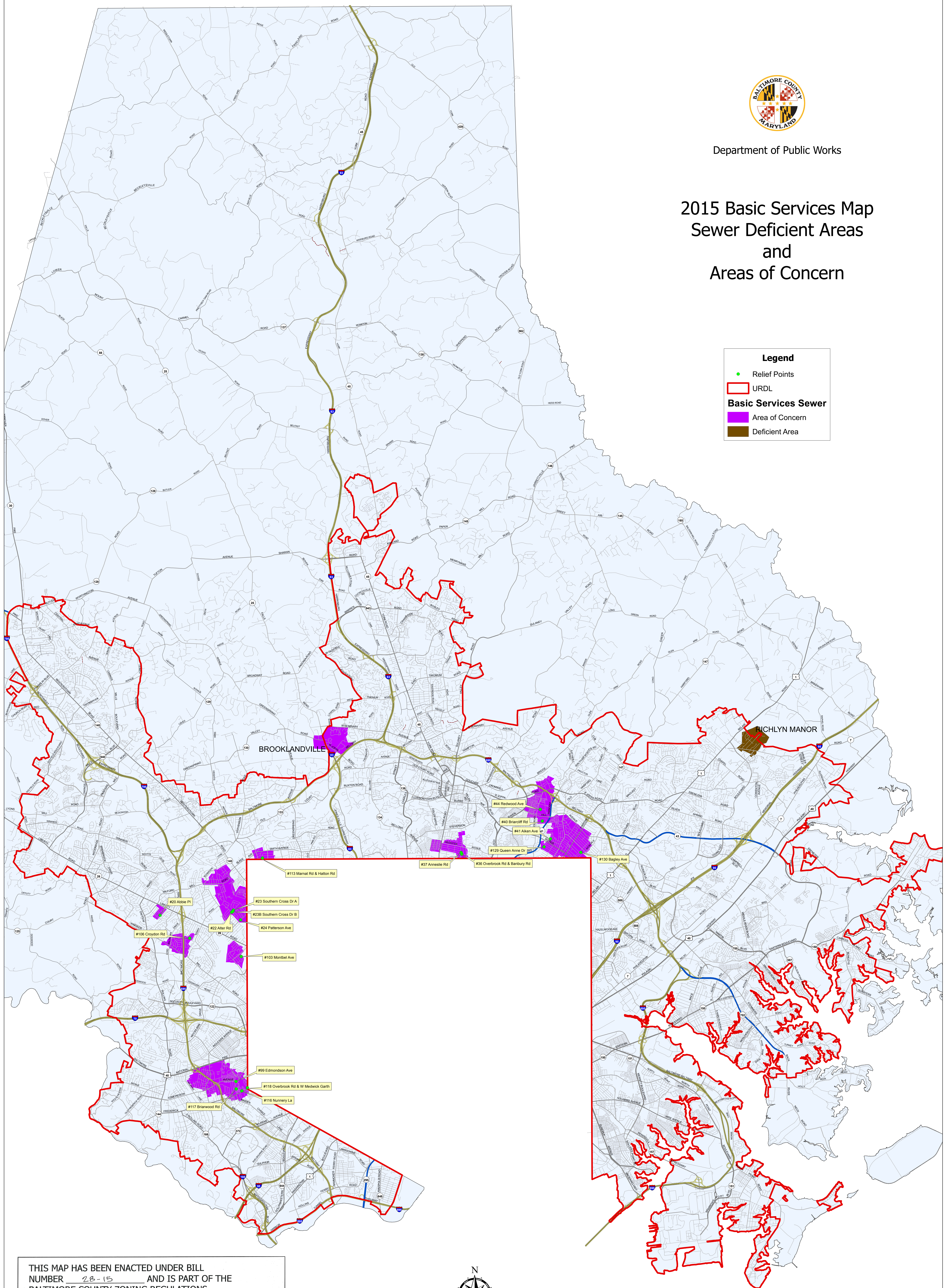


Department of Public Works

2015 Basic Services Map Sewer Deficient Areas and Areas of Concern

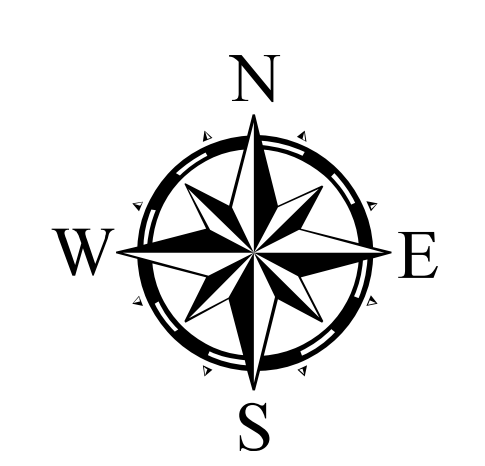
Legend

- Relief Points
- URDL
- Basic Services Sewer**
- Area of Concern
- Deficient Area



THIS MAP HAS BEEN ENACTED UNDER BILL NUMBER 28-15 AND IS PART OF THE BALTIMORE COUNTY ZONING REGULATIONS, 1955, AS AMENDED BY THE BILL ADOPTED May 4, 2015. EFFECTIVE May 18, 2015.

Cathy A. Beun
COUNTY COUNCIL OF BALTIMORE COUNTY



Scale 1 inch = 4,000 feet
0 2,000 4,000 8,000 12,000 16,000 Feet

Feature Class Production Dates
Sewer Areas 2015
Urban Rural Demarcation Line 2012
Roads 2014
County Boundary 2008
Produced by the Baltimore County Department of Public Works
North American Datum 1983 HARN, U.S. Survey Foot
Published May 22, 2015