

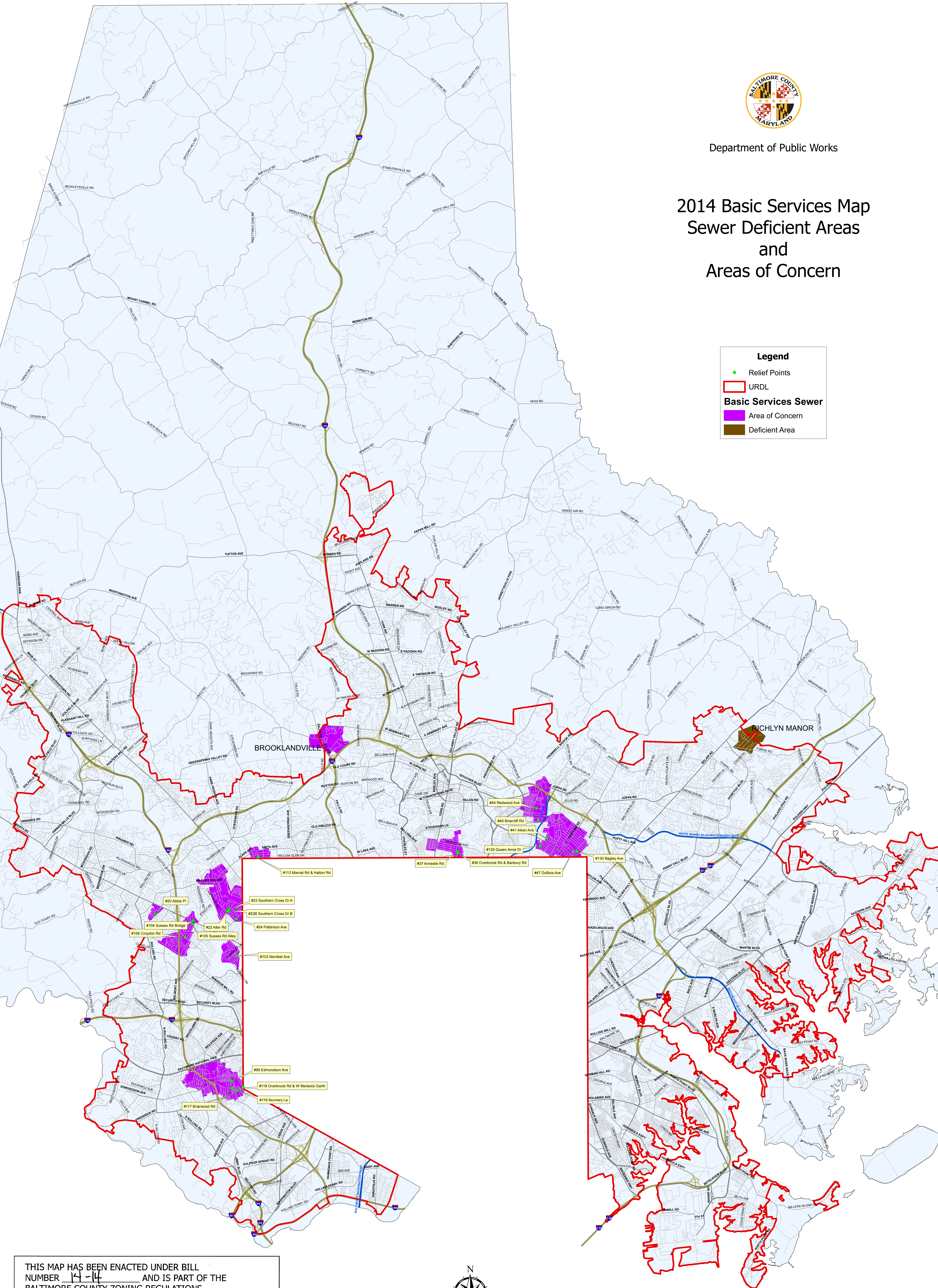


Department of Public Works

# 2014 Basic Services Map Sewer Deficient Areas and Areas of Concern

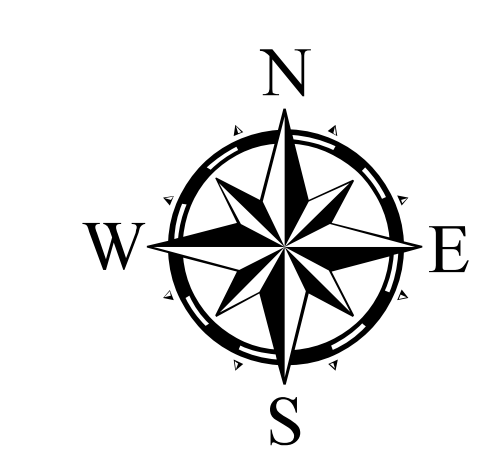
**Legend**

- Relief Points
- URDL
- Basic Services Sewer**
- Area of Concern
- Deficient Area



THIS MAP HAS BEEN ENACTED UNDER BILL NUMBER 14-14 AND IS PART OF THE BALTIMORE COUNTY ZONING REGULATIONS, 1955, AS AMENDED BY THE BILL ADOPTED May 5, 2014. EFFECTIVE May 19, 2014.

*Cathy Dennis*  
COUNTY COUNCIL OF BALTIMORE COUNTY



Scale 1 inch = 4,000 feet  
0 2,000 4,000 8,000 12,000 16,000 Feet

Feature Class Production Dates  
Sewer Areas ..... 2014  
Urban Rural Demarcation Line ..... 2012  
Roads ..... 2014  
County Boundary ..... 2008  
Produced by the Baltimore County Department of Public Works  
North American Datum 1983 HARN, U.S. Survey Foot  
Published May 29, 2014