



Department of Public Works

# 2013 Basic Services Map Transportation Zones

**Legend**

**Intersections**

**Level Of Service**

- D
- ◐ E
- F

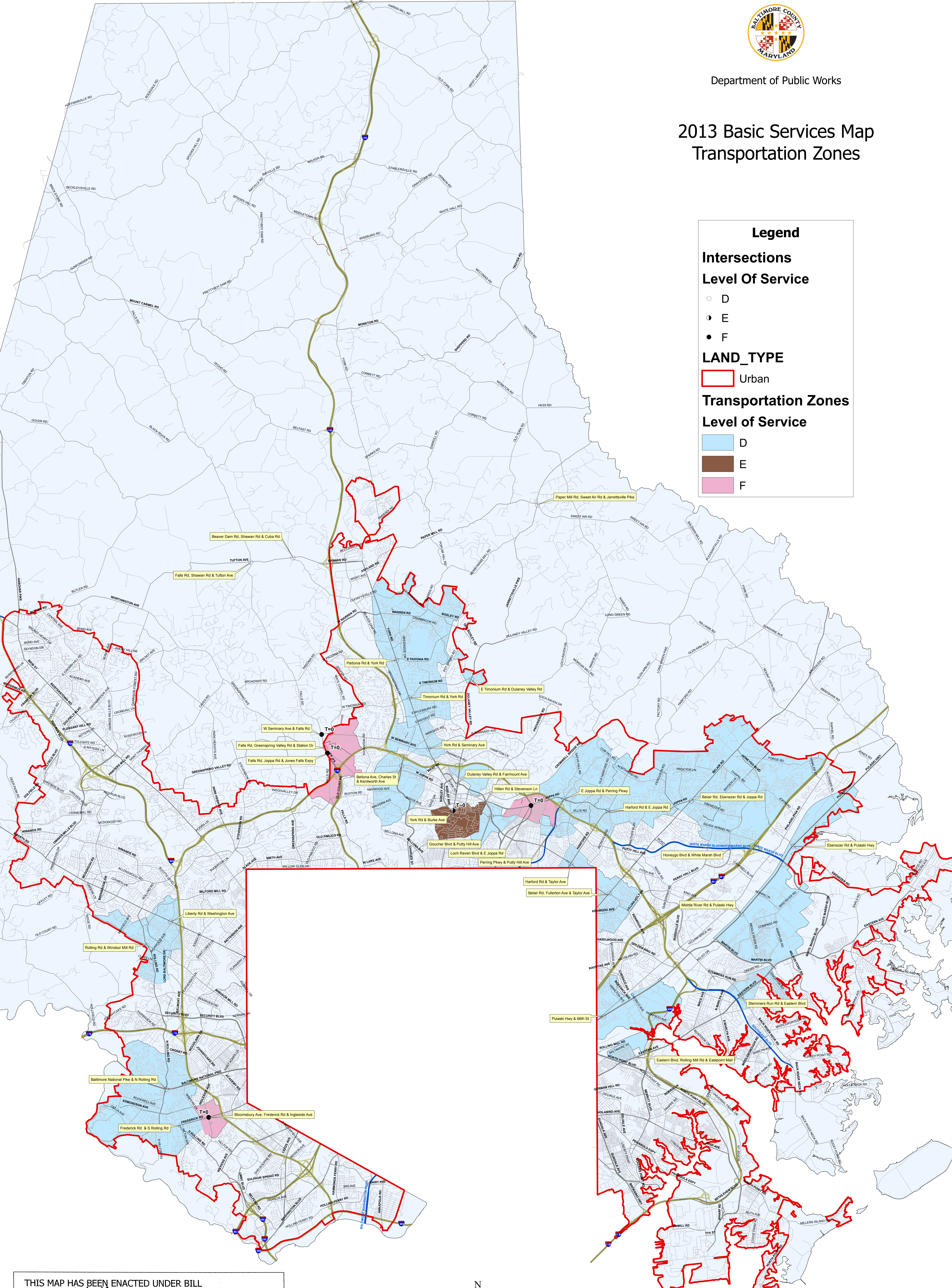
**LAND\_TYPE**

- Urban

**Transportation Zones**

**Level of Service**

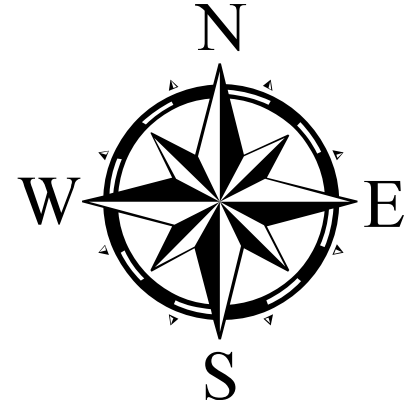
- D
- E
- F



THIS MAP HAS BEEN ENACTED UNDER BILL NUMBER 24-13 AND IS PART OF THE BALTIMORE COUNTY ZONING REGULATIONS, 1955, AS AMENDED BY THE BILL ADOPTED May 6, 2013 EFFECTIVE May 20, 2013.

*[Signature]*

COUNTY COUNCIL OF BALTIMORE COUNTY



Scale 1 inch = 4,000 feet  
0 2,000 4,000 8,000 12,000 16,000 Feet

Feature Class Production Dates  
 Transportation Zones ..... 2013  
 Intersections ..... 2013  
 Urban Rural Demarcation Line ..... 2012  
 Roads ..... 2013  
 County Boundary ..... 2008

Produced by the Baltimore County Department of Public Works  
 North American Datum 1983 HARN, U.S. Survey Foot  
 Published May 24, 2013