

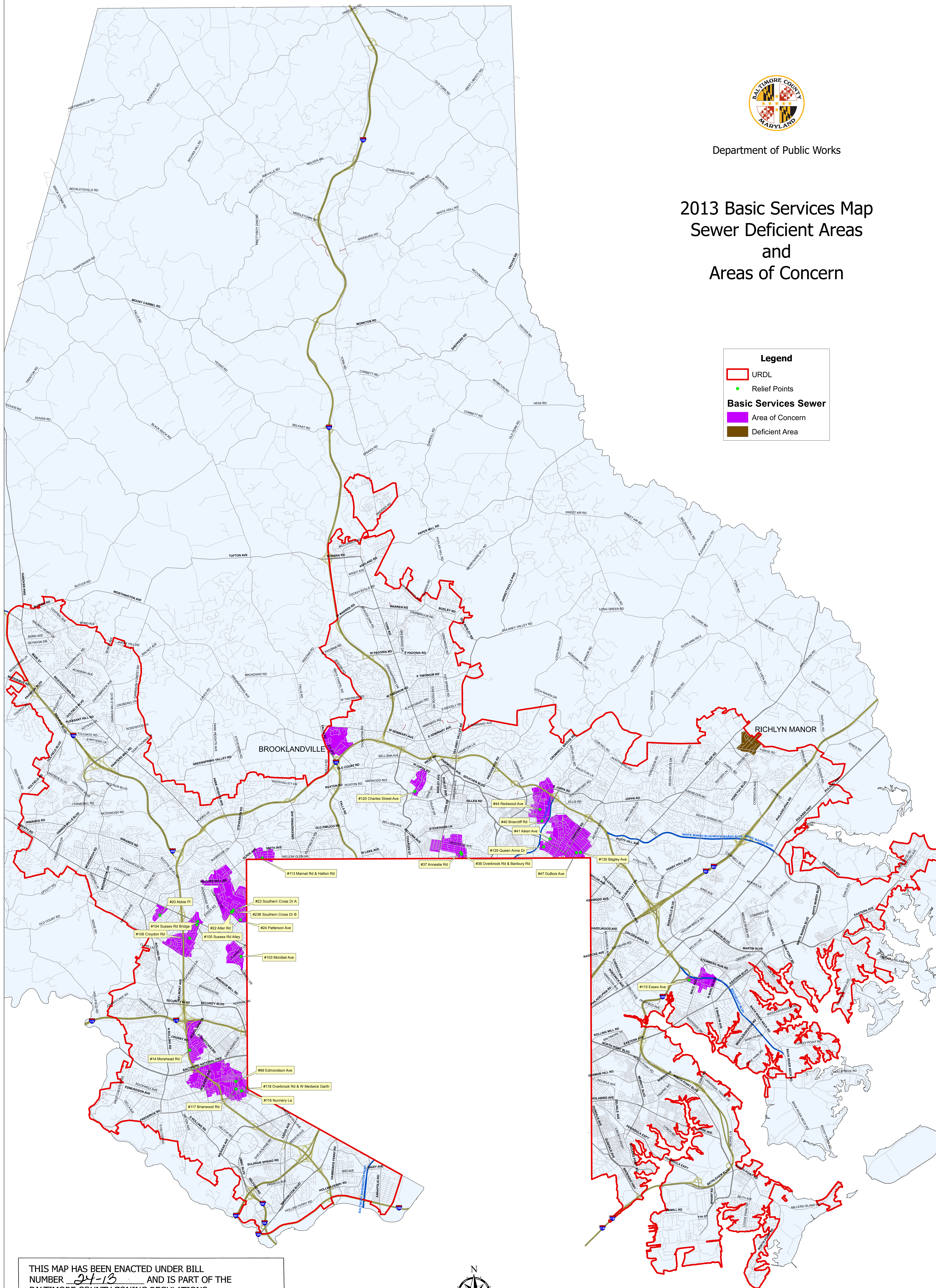


Department of Public Works

2013 Basic Services Map Sewer Deficient Areas and Areas of Concern

Legend

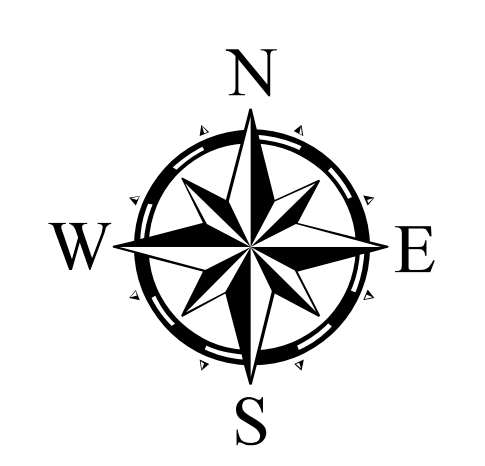
- URDL
- Relief Points
- Basic Services Sewer**
- Area of Concern
- Deficient Area



THIS MAP HAS BEEN ENACTED UNDER BILL NUMBER 24-13 AND IS PART OF THE BALTIMORE COUNTY ZONING REGULATIONS, 1955, AS AMENDED BY THE BILL ADOPTED May 16, 2013 EFFECTIVE May 20, 2013.

[Signature]

COUNTY COUNCIL OF BALTIMORE COUNTY



Scale 1 inch = 4,000 feet

0 2,000 4,000 8,000 12,000 16,000 Feet

Feature Class Production Dates
 Sewer Areas 2013
 Urban Rural Demarcation Line 2012
 Roads 2013
 County Boundary 2008

Produced by the Baltimore County Department of Public Works
 North American Datum 1983 HARN, U.S. Survey Foot
 Published May 24, 2013