



Department of Public Works
GIS Services

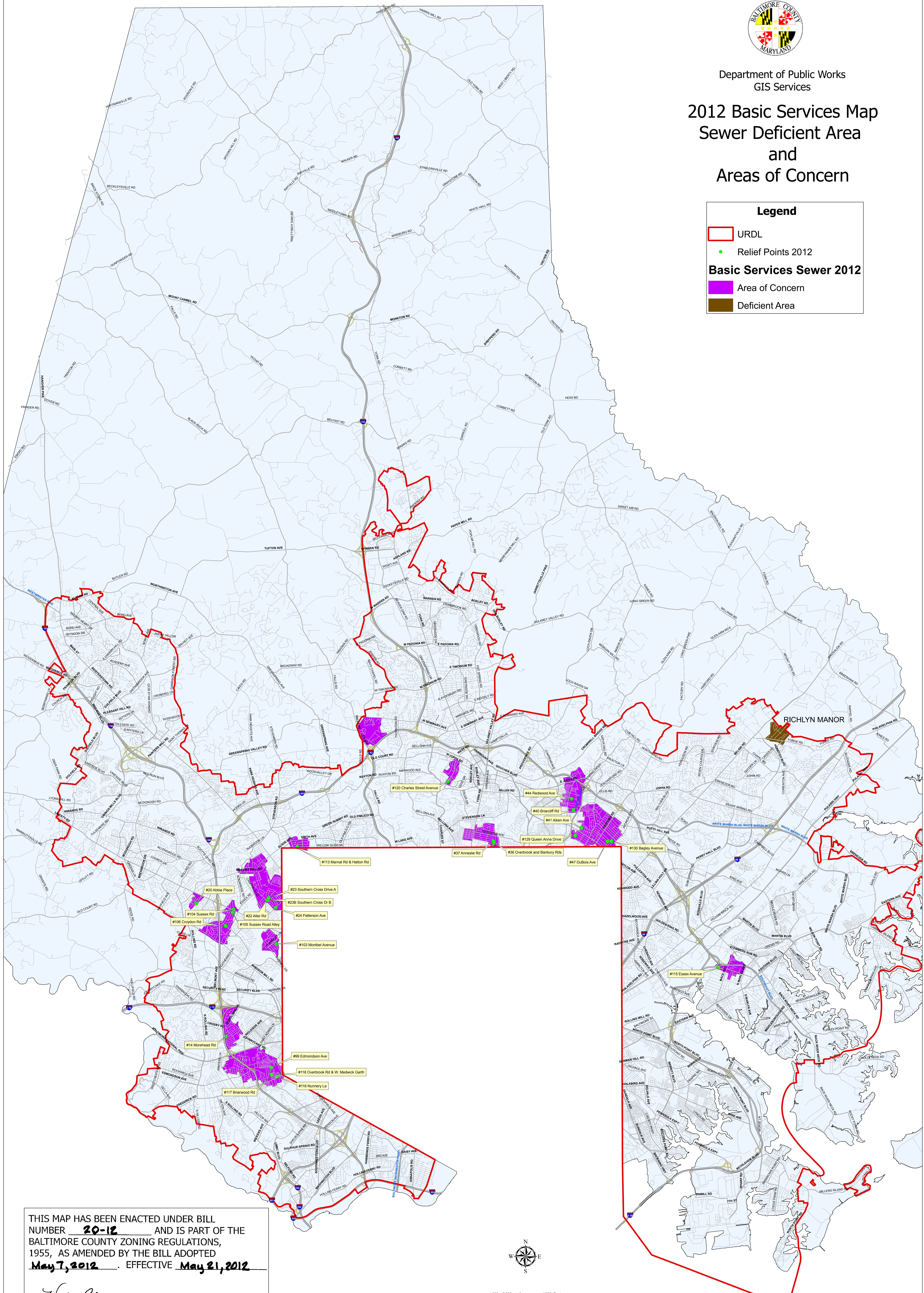
2012 Basic Services Map Sewer Deficient Area and Areas of Concern

Legend

- URDL
- Relief Points 2012

Basic Services Sewer 2012

- Area of Concern
- Deficient Area



THIS MAP HAS BEEN ENACTED UNDER BILL NUMBER 20-12 AND IS PART OF THE BALTIMORE COUNTY ZONING REGULATIONS, 1955, AS AMENDED BY THE BILL ADOPTED May 7, 2012. EFFECTIVE May 21, 2012

Vicki Almond
COUNTY COUNCIL OF BALTIMORE COUNTY