

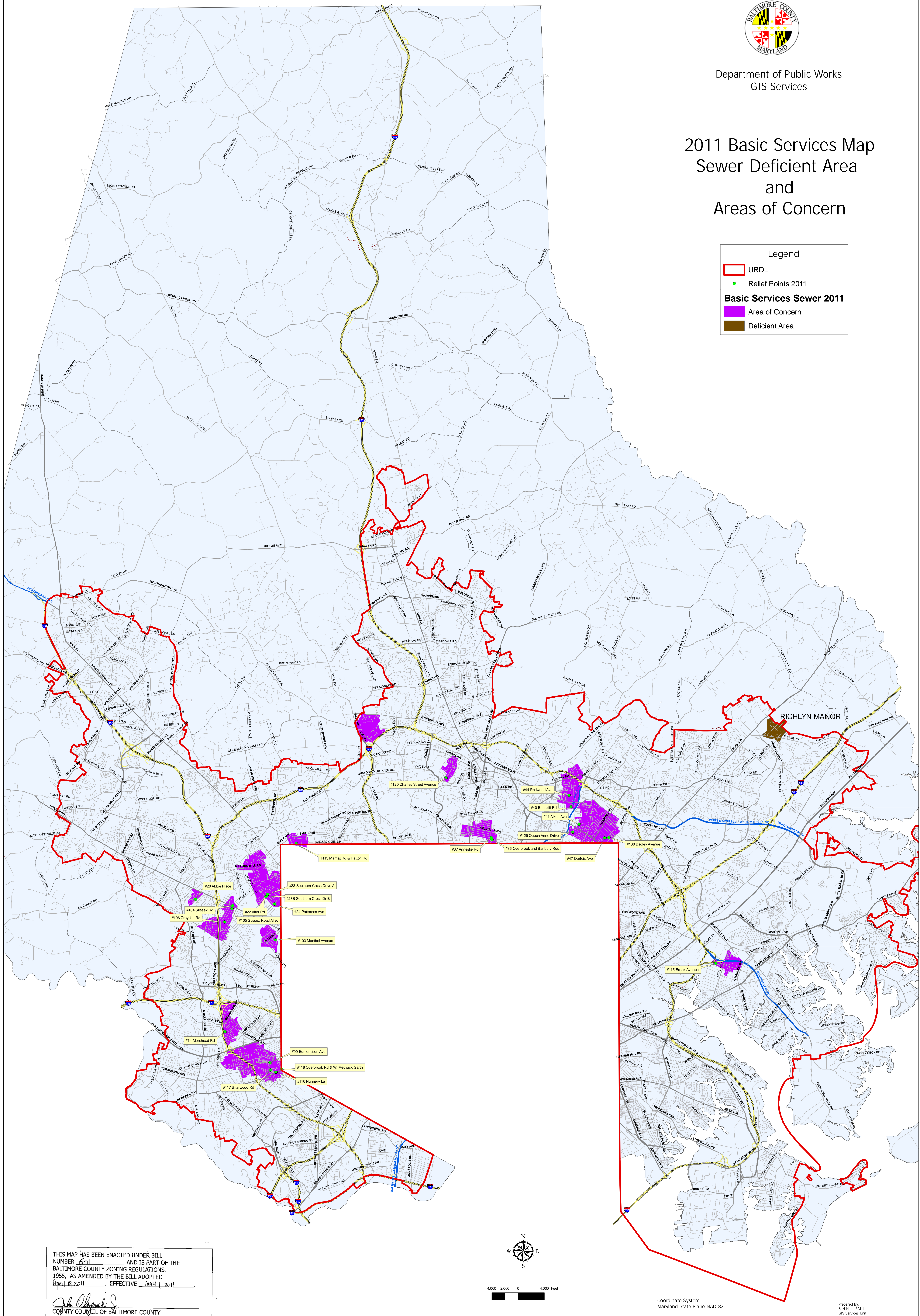


Department of Public Works
GIS Services

2011 Basic Services Map Sewer Deficient Area and Areas of Concern

Legend

- URDL
- Relief Points 2011
- Basic Services Sewer 2011**
- Area of Concern
- Deficient Area



THIS MAP HAS BEEN ENACTED UNDER BILL NUMBER 15-11 AND IS PART OF THE BALTIMORE COUNTY ZONING REGULATIONS, 1955, AS AMENDED BY THE BILL ADOPTED April 18, 2011. EFFECTIVE May 1, 2011.

John Olipinski Sr.
COUNTY COUNCIL OF BALTIMORE COUNTY

Coordinate System:
Maryland State Plane NAD 83

Baltimore County Small Scale Data
Data Captured at 1" = 2,000'

Prepared By:
Suzi Hale, EA1H
GIS Services Unit
Bureau of Engineering
& Construction

Map Production Date: 01/14/2011