

2018 – 2019 School Adequate Public Facilities Ordinance Report and Maps



**Baltimore County Department of Planning
May 9, 2019**

Report Summary

Section 32-6-103(f) of the Baltimore County Code requires that the Department of Planning furnish the School Adequate Public Facilities Ordinance Report and Maps using September 30, 2018 school enrollment data, indicating overcrowded school districts in accordance with parameters in the referenced County Code.

The full time equivalent (FTE) enrollments of September 30, 2018 and the same school year's state rated capacity (SRC) for all the elementary, middle, and high schools are presented in the first section of this report. The second section reviews schools that are at or over 115% of the SRC.

In the 2018-2019 school year, the FTEs of 23 elementary schools and one high school are at or over 115% of their SRCs. A school impact analysis will be performed for each proposed development project to determine whether a school district is overcrowded under Section 32-6-103(f) of the Baltimore County Code. The County's \$1.3 billion *Schools for Our Future* capital program is outlined on pages 31 and 32, which will factor into the school impact analysis as required in Section 32-6-103(f) of the County Code. In addition, County Executive Olszewski has proposed a \$750,000 ten-year Facility Maintenance Study in his FY2020 Capital Budget.

Table of Contents

<i>September 30, 2018 Systemwide Capacities</i>	2
<i>Chadwick Elementary School</i>	7
<i>Colgate Elementary School</i>	8
<i>Deep Creek Elementary School</i>	9
<i>Dundalk Elementary School</i>	10
<i>Elmwood Elementary School</i>	11
<i>Fifth District Elementary School</i>	12
<i>Fullerton Elementary School</i>	13
<i>Grange Elementary School</i>	14
<i>Harford Hills Elementary School</i>	15
<i>Johnnycake Elementary School</i>	16
<i>Joppa View Elementary School</i>	17
<i>Lyons Mill Elementary School</i>	18
<i>Milbrook Elementary School</i>	19
<i>Orem Elementary School</i>	20
<i>Perry Hall Elementary School</i>	21
<i>Pine Grove Elementary School</i>	22
<i>Pleasant Plains Elementary School</i>	23
<i>Reisterstown Elementary School</i>	24
<i>Shady Spring Elementary School</i>	25
<i>Summit Park Elementary School</i>	26
<i>Sussex Elementary School</i>	27
<i>Timonium Elementary School</i>	28
<i>Woodholme Elementary School</i>	29
<i>Towson High School</i>	30
<i>Appendix: Schools for Our Future</i>	31

September 30, 2018 Systemwide Capacities

Elementary Schools	2018 FTE	2018 SRC	FTE/SRC
Arbutus ES	390	405	96.30%
Baltimore Highlands ES	527	549	95.99%
Battle Grove ES	321	377	85.15%
Bear Creek ES	478	484	98.76%
Bedford ES	312	309	100.97%
Berkshire ES	447	428	104.44%
Carney ES	621	574	108.19%
Carroll Manor ES	373	362	103.04%
Catonsville ES	640	664	96.39%
Cedarmere ES	543	474	114.56%
Chadwick ES	621	408	152.21%
Chapel Hill ES	676	636	106.29%
Charlesmont ES	421	418	100.72%
Chase ES	383	393	97.46%
Chatsworth ES	373	442	84.39%
Chesapeake Terrace ES	306	292	104.79%
Church Lane ES	371	476	77.94%
Colgate ES	423	319	132.60%
Cromwell Valley ES Magnet	364	411	88.56%
Deep Creek ES	480	368	130.43%
Deer Park ES	374	451	82.93%
Dogwood ES	685	612	111.93%
Dundalk ES	690	590	116.95%
Edgemere ES	461	523	88.15%
Edmondson Heights ES	508	589	86.25%
Elmwood ES	572	474	120.68%
Essex ES	482	471	102.34%
Featherbed Lane ES	605	654	92.51%
Fifth District ES	318	274	116.06%
Fort Garrison ES	278	431	64.50%
Franklin ES	420	473	88.79%
Fullerton ES	599	463	129.37%
Glenmar ES	311	371	83.83%
Glyndon ES	515	520	99.04%
Grange ES	465	385	120.78%
Gunpowder ES	525	499	105.21%

September 30, 2018 Systemwide Capacities (cont'd)

Elementary Schools	2018 FTE	2018 SRC	FTE/SRC
Halethorpe ES	384	392	97.96%
Halstead Academy	473	516	91.67%
Hampton ES	554	648	85.49%
Harford Hills ES	403	323	124.77%
Hawthorne ES	500	587	85.18%
Hebbsville ES	453	540	83.89%
Hernwood ES	395	415	95.18%
Hillcrest ES	675	708	95.34%
Honeygo ES	606	725	83.59%
Jacksonville ES	538	637	84.46%
Johnnycake ES	686	559	122.72%
Joppa View ES	793	635	124.88%
Kingsville ES	316	349	90.54%
Lansdowne ES	569	709	80.25%
Logan ES	563	517	108.90%
Lutherville ES	366	407	89.93%
Lyons Mill ES	793	681	116.45%
Mars Estates ES	360	431	83.53%
Martin Blvd ES	283	291	97.25%
Mays Chapel ES	728	702	103.70%
McCormick ES	321	380	84.47%
Middleborough ES	338	326	103.68%
Middlesex ES	391	494	79.15%
Milbrook ES	410	319	128.53%
New Town ES	779	703	110.81%
Norwood ES (Pre K - 3)	467	521	89.64%
Oakleigh ES	554	496	111.69%
Oliver Beach ES	189	265	71.32%
Orems ES	363	313	115.97%
Owings Mills ES	737	699	105.44%
Padonia ES	476	529	89.98%
Perry Hall ES	634	528	120.08%
Pine Grove ES	579	497	116.50%
Pinewood ES	539	566	95.23%
Pleasant Plains ES	667	509	131.04%
Pot Spring ES	464	477	97.27%

September 30, 2018 Systemwide Capacities (cont'd)

Elementary Schools	2018 FTE	2018 SRC	FTE/SRC
Powhatan ES	268	313	85.62%
Prettyboy ES	441	398	110.80%
Randallstown ES	367	398	92.21%
Red House Run ES	536	486	110.29%
Reisterstown ES	572	450	127.11%
Relay ES	681	691	98.55%
Riderwood ES	405	463	87.47%
Riverview ES	530	572	92.66%
Rodgers Forge ES	446	396	112.63%
Sandalwood ES	512	542	94.46%
Sandy Plains ES	566	664	85.24%
Scotts Branch ES	578	511	113.11%
Seneca ES	446	409	109.05%
Seven Oaks ES	466	428	108.88%
Seventh District ES	381	461	82.65%
Shady Spring ES	593	499	118.84%
Sparks ES	486	604	80.46%
Stoneleigh ES	797	700	113.86%
Summit Park ES	477	336	141.96%
Sussex ES	464	380	122.11%
Timber Grove ES	559	600	93.17%
Timonium ES	487	395	123.29%
Victory Villa ES	654	735	88.98%
Villa Cresta ES	661	637	103.77%
Vincent Farm ES	734	699	105.01%
Warren ES	397	395	100.51%
Wellwood ES	487	455	107.03%
West Towson ES	474	451	105.10%
Westchester ES	668	692	96.53%
Westowne ES	661	650	101.69%
Winand ES	469	583	80.45%
Winfield ES	482	485	99.38%
Woodbridge ES	439	432	101.62%
Woodholme ES	799	676	118.20%
Woodmoor ES	581	631	92.08%
Total for Elementary Schools	53,788	53,180	101.14%

FTE: Full Time Equivalent Enrollment. SRC: State Rated Capacity.
Systemwide, there are 608 full time students greater than SRC.

September 30, 2018 Systemwide Capacities (cont'd)

Middle Schools	2018 FTE	2018 SRC	FTE/SRC
Arbutus MS	964	1,011	95.35%
Catonsville MS	859	774	110.98%
Cockeysville MS	940	1,059	88.76%
Deep Creek MS	805	987	81.56%
Deer Park Magnet MS	1,285	1,368	93.93%
Dumbarton MS	1,168	1,114	104.85%
Dundalk MS	718	814	88.21%
Franklin MS	1,254	1,389	90.28%
General John Stricker MS	728	973	74.82%
Golden Ring MS	763	849	89.87%
Hereford MS	1,007	1,123	89.67%
Holabird MS (4 - 8)	961	967	99.38%
Lansdowne MS	787	923	85.27%
Loch Raven Academy	769	901	85.35%
Middle River MS	935	1,007	92.85%
Northwest Academy of Health Sciences*	819	983	83.32%
Parkville MS	1,175	1,089	107.90%
Perry Hall MS	1,888	1,643	114.91%
Pikesville MS	981	1,029	95.34%
Pine Grove MS	921	1,197	76.94%
Ridgely MS	1,165	1,070	108.88%
Southwest Academy	820	1,101	74.48%
Sparrows Point MS	627	573	109.42%
Stemmers Run MS	760	1,154	65.86%
Sudbrook Magnet MS	1,040	1,060	98.11%
Windsor Mill MS	593	720	82.36%
Woodlawn MS	574	953	60.23%
Total for Middle Schools	25,306	27,831	90.93%

FTE: Full Time Equivalent Enrollment.

SRC: State Rated Capacity.

Systemwide, there are 2,525 full time students fewer than SRC.

*: Former Old Court MS.

September 30, 2018 Systemwide Capacities (cont'd)

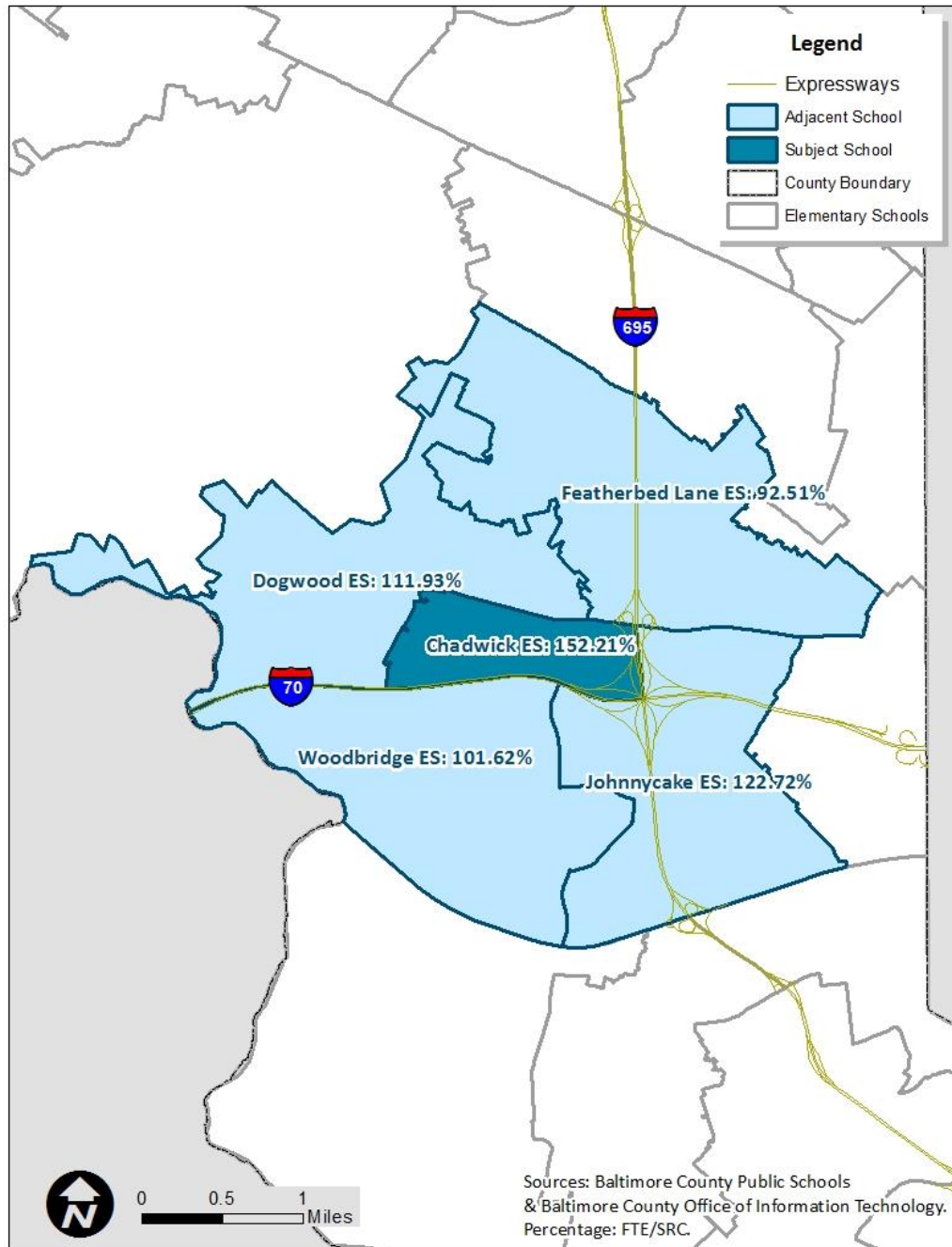
High Schools	2018 FTE	2018 SRC	FTE/SRC
Catonsville HS	1,830	1,750	104.57%
Chesapeake HS	981	1,019	96.27%
Dulaney HS	1,879	1,984	94.71%
Dundalk HS	1,621	1,446	112.10%
Eastern Tech HS	1,172	1,339	87.53%
Franklin HS	1,460	1,647	88.65%
G.W. Carver Center	942	1,029	91.55%
Hereford HS	1,271	1,548	82.11%
Kenwood HS	1,622	1,918	84.57%
Lansdowne HS	1,291	1,420	90.92%
Loch Raven HS	870	975	89.23%
Milford Mill Academy	1,233	1,465	84.16%
New Town HS	1,102	1,303	84.57%
Overlea HS	987	1,230	80.24%
Owings Mills HS	1,160	1,103	105.17%
Parkville HS	1,884	2,037	92.49%
Patapsco HS	1,441	1,302	110.68%
Perry Hall HS	1,974	2,110	93.55%
Pikesville HS	905	1,006	89.96%
Randallstown HS	969	1,379	70.27%
Sparrows Point HS	992	871	113.89%
Towson HS	1,629	1,260	129.29%
Western School of Technology	909	1,009	90.09%
Woodlawn HS	1,575	2,129	73.98%
Total for High Schools	31,699	34,279	92.47%

FTE: Full Time Equivalent Enrollment.

SRC: State Rated Capacity.

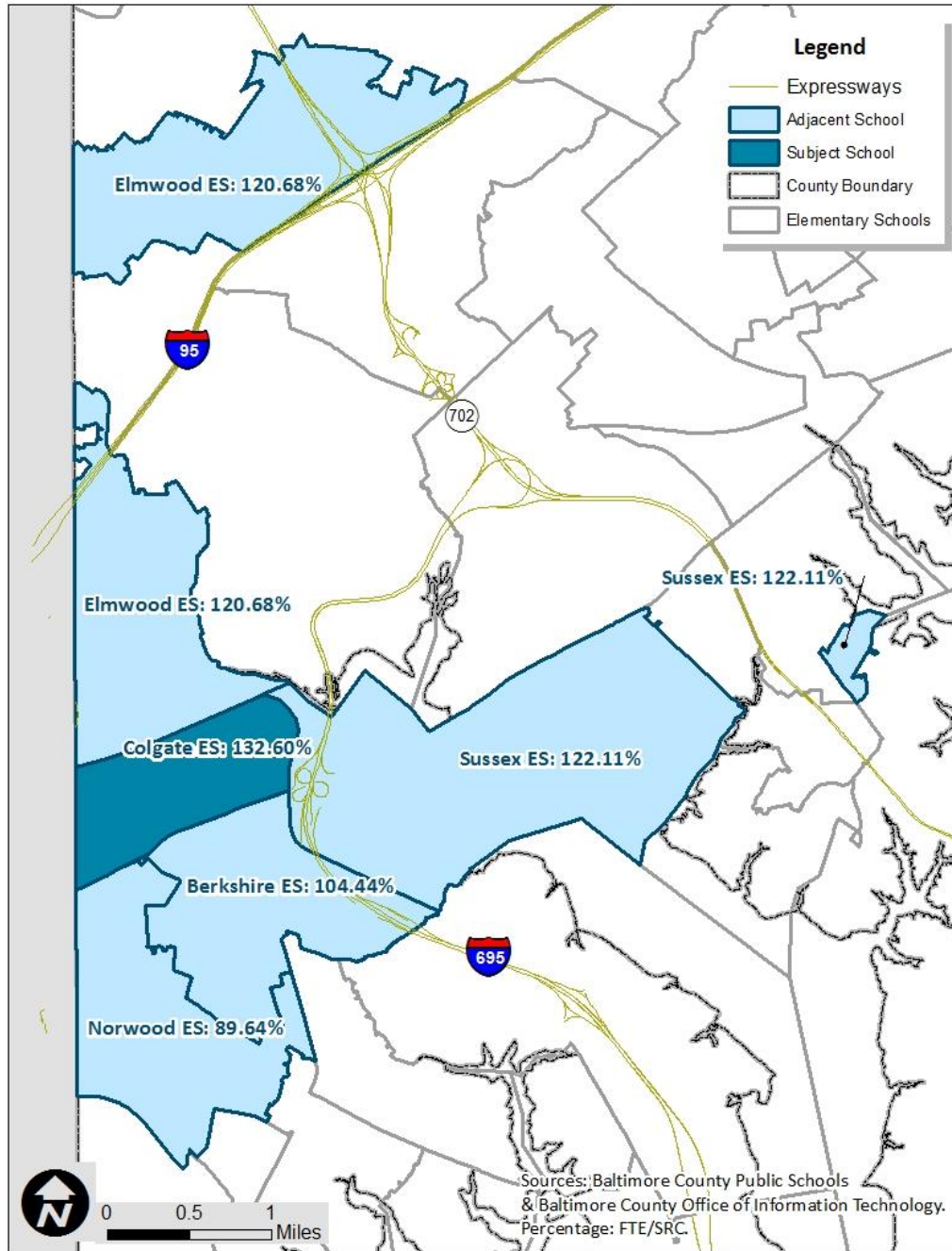
Systemwide, there are 2,580 full time students fewer than SRC.

Chadwick Elementary School



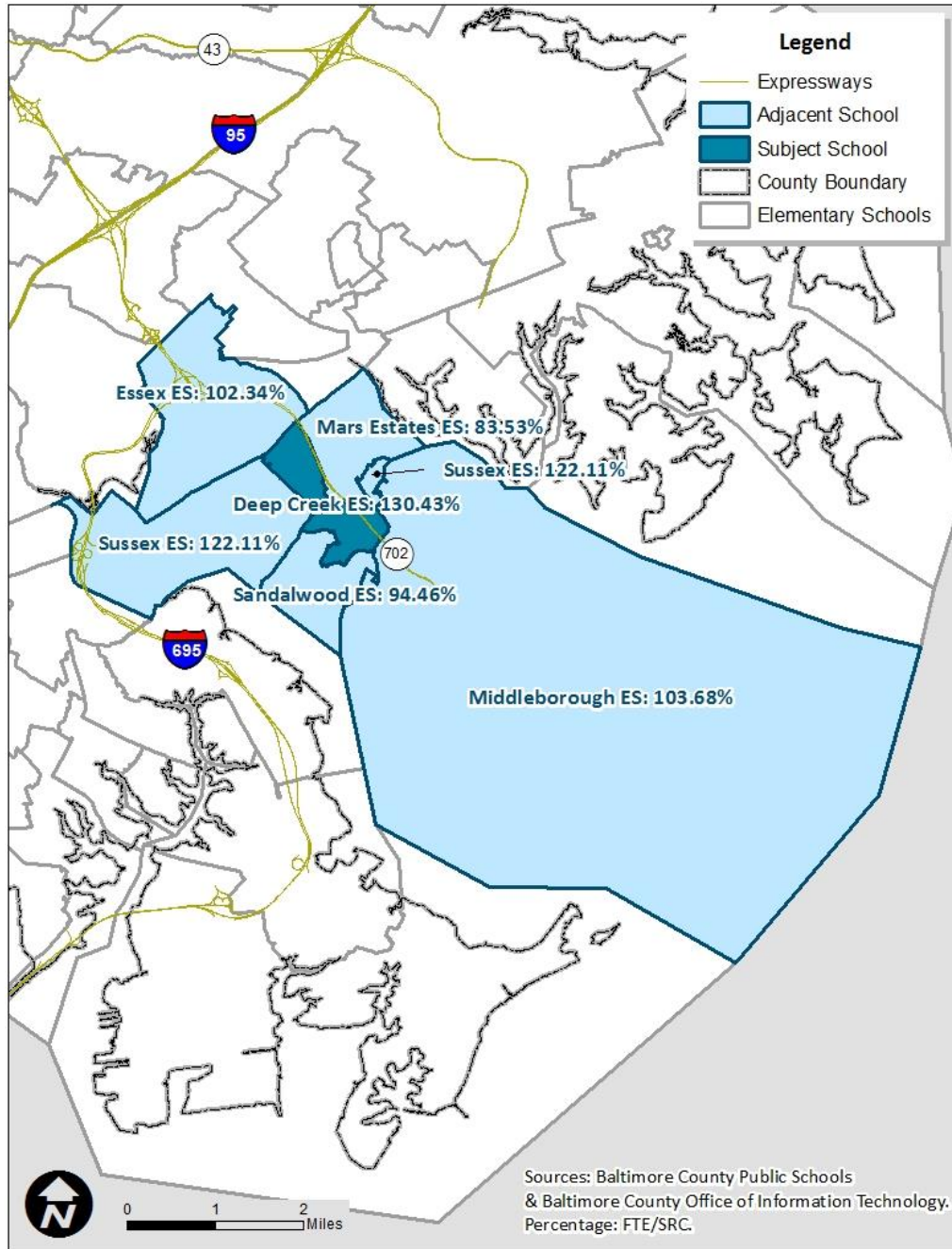
Chadwick Elementary School's enrollment as of September 30, 2018 is 621. The State Rated Capacity (SRC) for this school is 408. Based on these numbers, Chadwick Elementary School is 152.21% of SRC. A school impact analysis will be performed for each proposed development project to determine whether a school adjacent to Chadwick Elementary School (see map above) is overcrowded under Section 32-6-103(f) of the Baltimore County Code. The County's \$1.3 billion Schools for Our Future capital program as outlined on pages 31-32 will factor into the school impact analysis as required by Section 32-6-103(f).

Colgate Elementary School



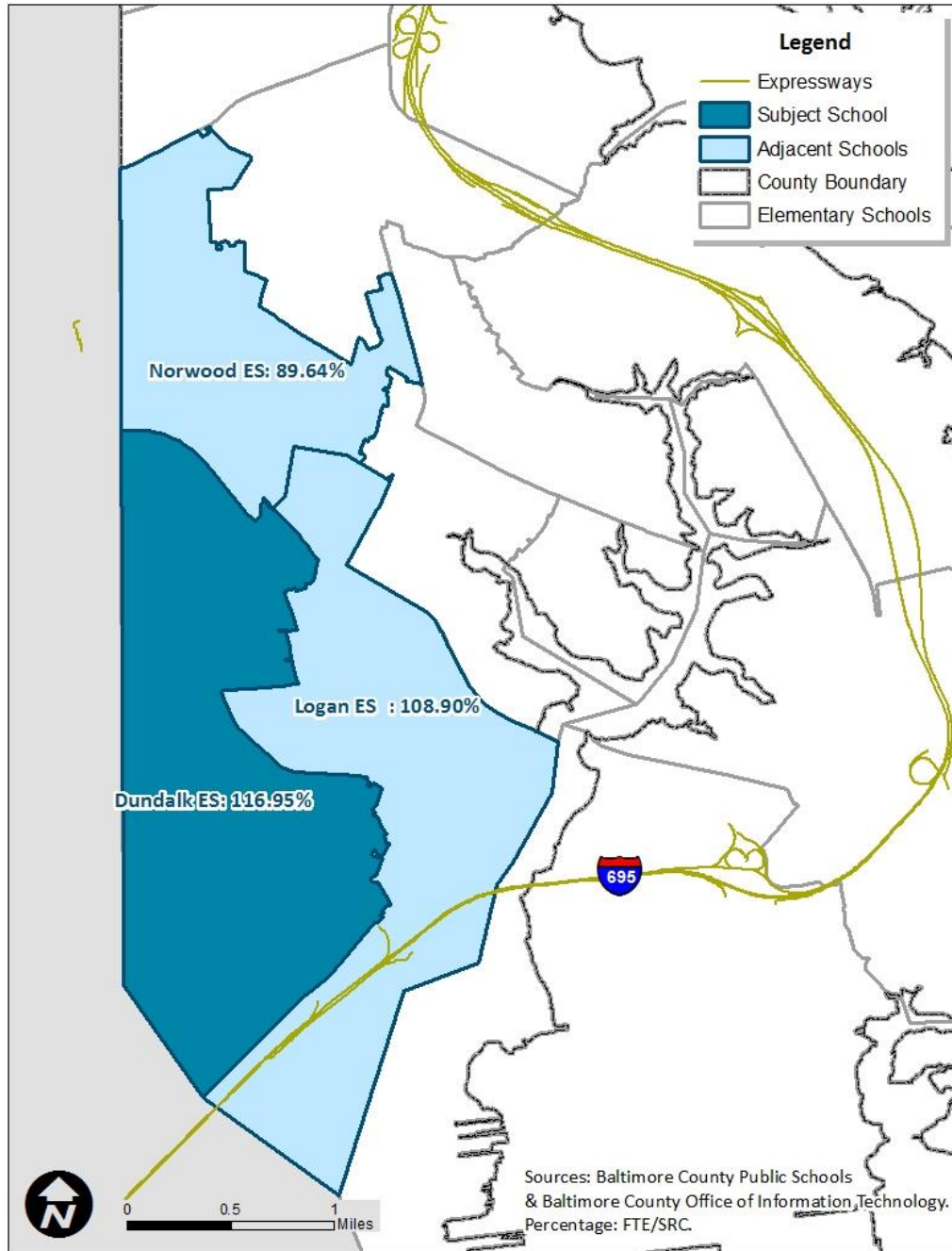
Colgate Elementary School's enrollment of September 30, 2018 is 423. The State Rated Capacity (SRC) for this school is 319. Based on these numbers, Colgate Elementary School is 132.60% of SRC. A school impact analysis will be performed for each proposed development project to determine whether a school adjacent to Colgate Elementary School (see map above) is overcrowded under Section 32-6-103(f) of the Baltimore County Code. The County's \$1.3 billion Schools for Our Future capital program as outlined on pages 31-32 will factor into the school impact analysis as required by Section 32-6-103(f).

Deep Creek Elementary School



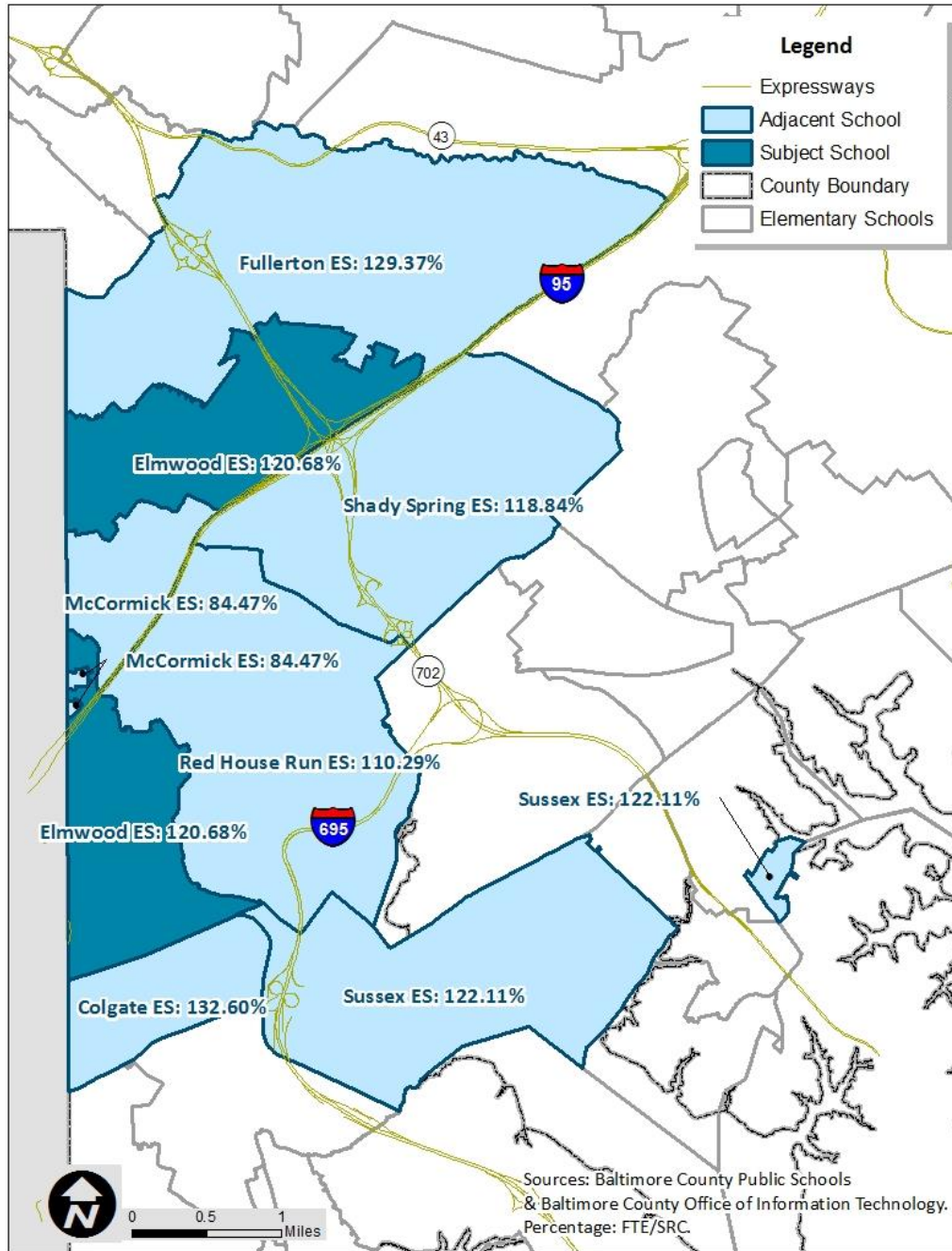
Deep Creek Elementary School's enrollment of September 30, 2018 is 480. The State Rated Capacity (SRC) for this school is 368. Based on these numbers, Deep Creek Elementary School is 130.43% of SRC. A school impact analysis will be performed for each proposed development project to determine whether a school adjacent to Deep Creek Elementary School (see map above) is overcrowded under Section 32-6-103(f) of the Baltimore County Code. The County's \$1.3 billion Schools for Our Future capital program as outlined on pages 31-32 will factor into the school impact analysis as required by Section 32-6-103(f).

Dundalk Elementary School



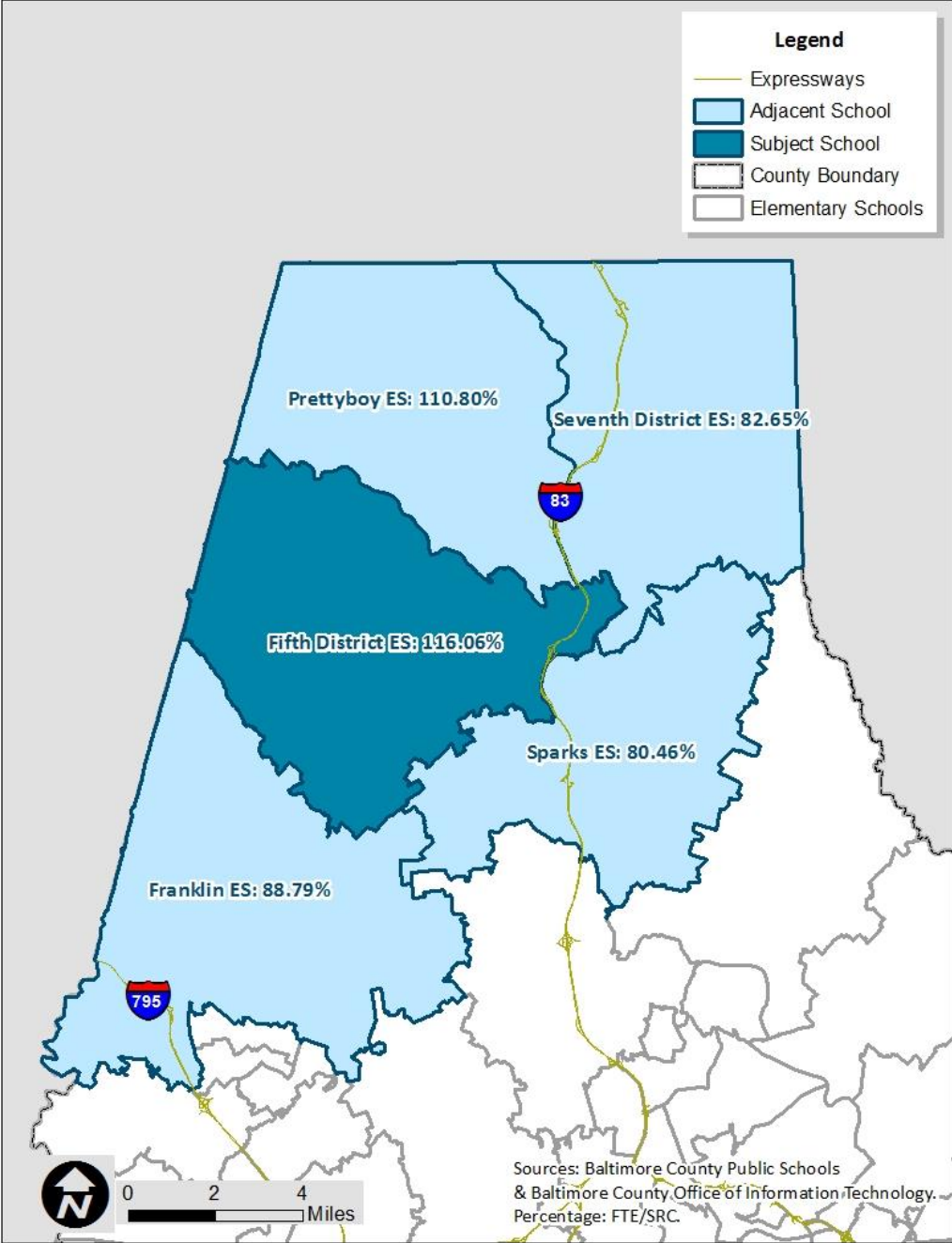
Dundalk Elementary School's enrollment of September 30, 2018 is 690. The State Rated Capacity (SRC) for this school is 590. Based on these numbers, Dundalk Elementary School is 116.95% of SRC. A school impact analysis will be performed for each proposed development project to determine whether a school adjacent to Dundalk Elementary School (see map above) is overcrowded under Section 32-6-103(f) of the Baltimore County Code. The County's \$1.3 billion Schools for Our Future capital program as outlined on pages 31-32 will factor into the school impact analysis as required by Section 32-6-103(f).

Elmwood Elementary School



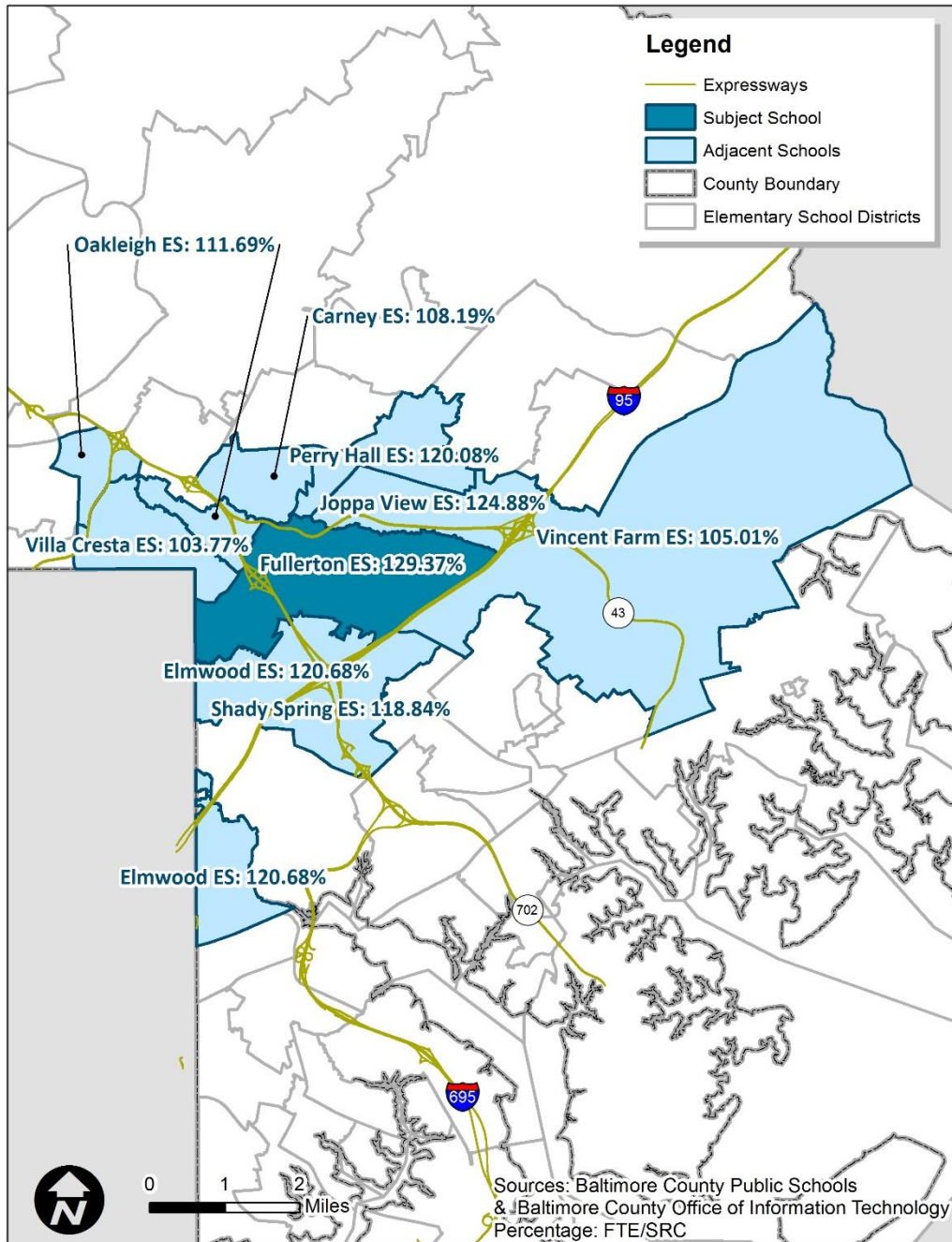
Elmwood Elementary School’s enrollment of September 30, 2018 is 572. The State Rated Capacity (SRC) for this school is 474. Based on these numbers, Elmwood Elementary School is 120.68% of SRC. A school impact analysis will be performed for each proposed development project to determine whether a school adjacent to Elmwood Elementary School (see map above) is overcrowded under Section 32-6-103(f) of the Baltimore County Code. The County’s \$1.3 billion Schools for Our Future capital program as outlined on pages 31-32 will factor into the school impact analysis as required by Section 32-6-103(f).

Fifth District Elementary School



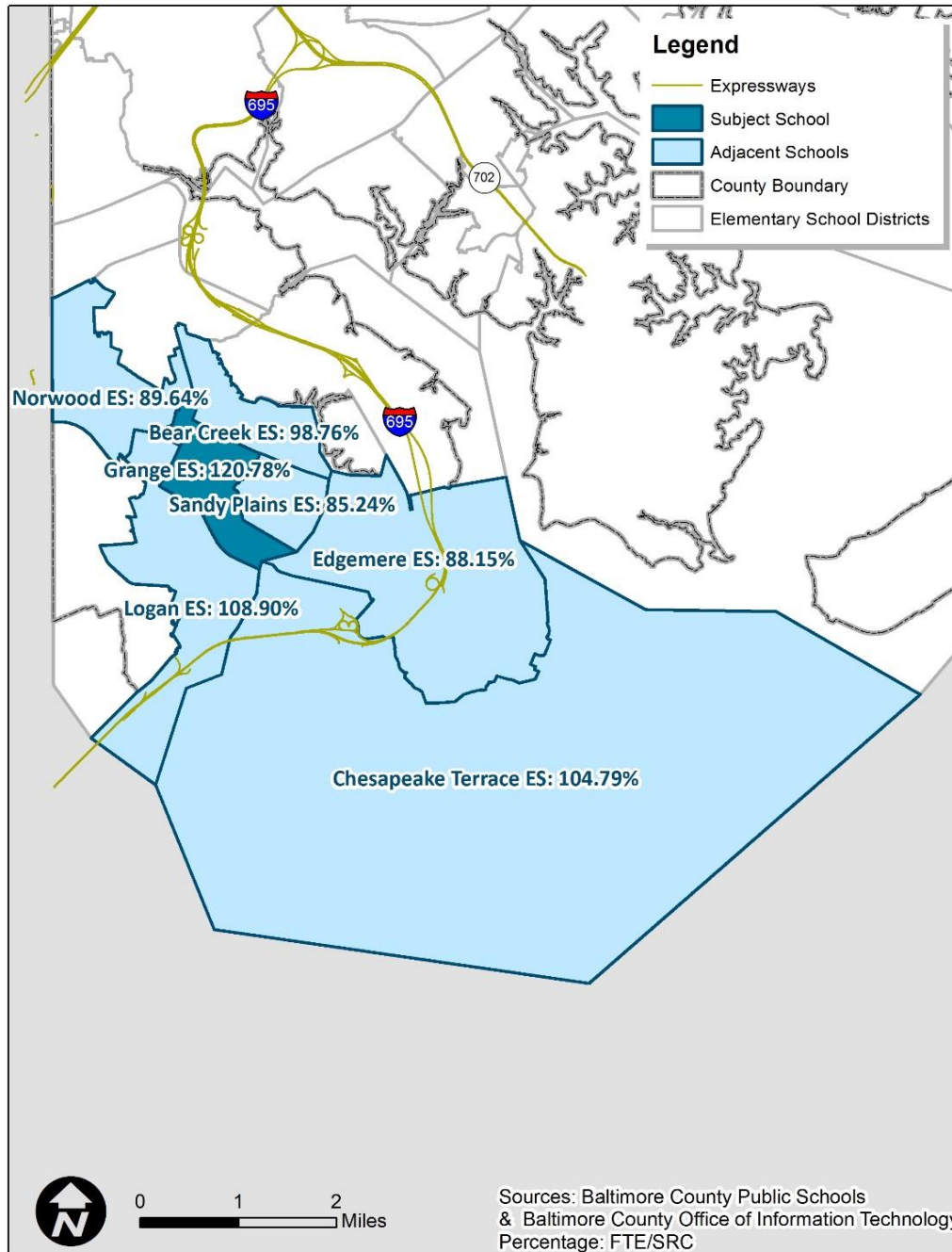
Fifth District Elementary School’s enrollment of September 30, 2018 is 318. The State Rated Capacity (SRC) for this school is 274. Based on these numbers, Fifth District Elementary School is 116.06% of SRC. A school impact analysis will be performed for each proposed development project to determine whether a school adjacent to Fifth District Elementary School (see map above) is overcrowded under Section 32-6-103(f) of the Baltimore County Code.

Fullerton Elementary School



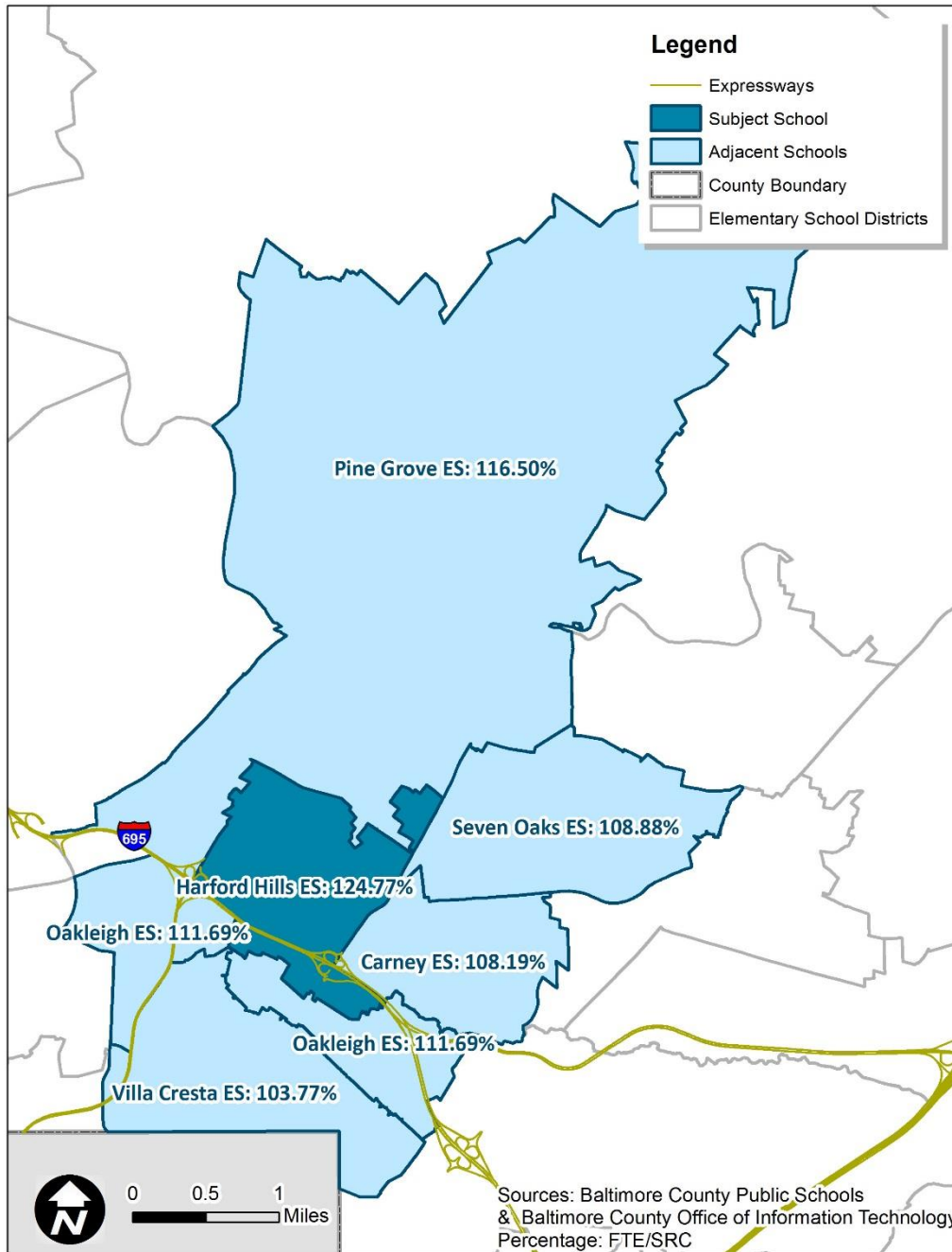
Fullerton Elementary School’s enrollment of September 30, 2018 is 599. The State Rated Capacity (SRC) for this school is 463. Based on these numbers, Fullerton Elementary School is 129.37% of SRC. A school impact analysis will be performed for each proposed development project to determine whether a school adjacent to Fullerton Elementary School (see map above) is overcrowded under Section 32-6-103(f) of the Baltimore County Code. The County’s \$1.3 billion Schools for Our Future capital program as outlined on pages 31-32 will factor into the school impact analysis as required by Section 32-6-103(f).

Grange Elementary School



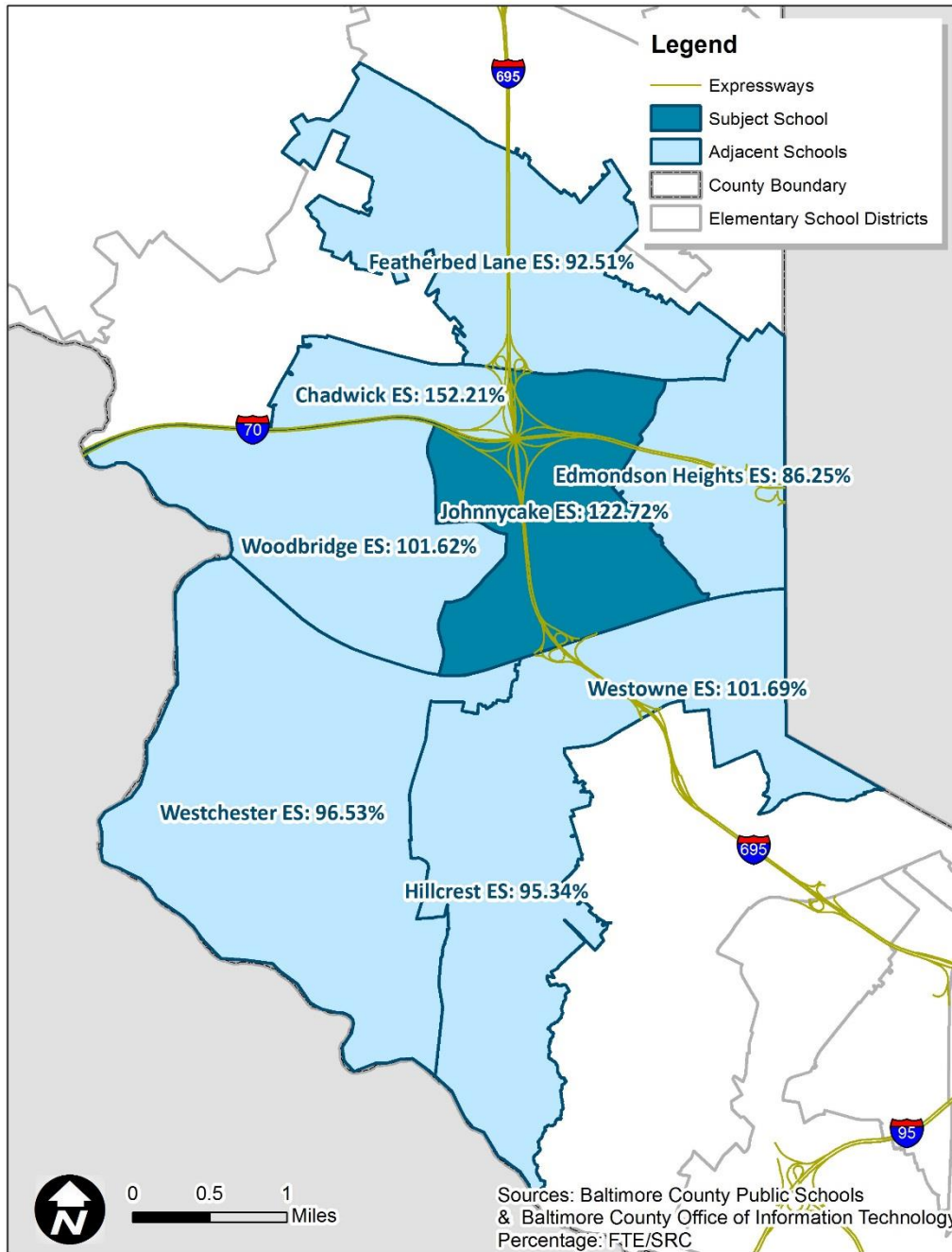
Grange Elementary School's enrollment of September 30, 2018 is 465. The State Rated Capacity (SRC) for this school is 385. Based on these numbers, Grange Elementary School is 120.78% of SRC. A school impact analysis will be performed for each proposed development project to determine whether a school adjacent to Grange Elementary School (see map above) is overcrowded under Section 32-6-103(f) of the Baltimore County Code. The County's \$1.3 billion Schools for Our Future capital program as outlined on pages 31-32 will factor into the school impact analysis as required by Section 32-6-103(f).

Harford Hills Elementary School



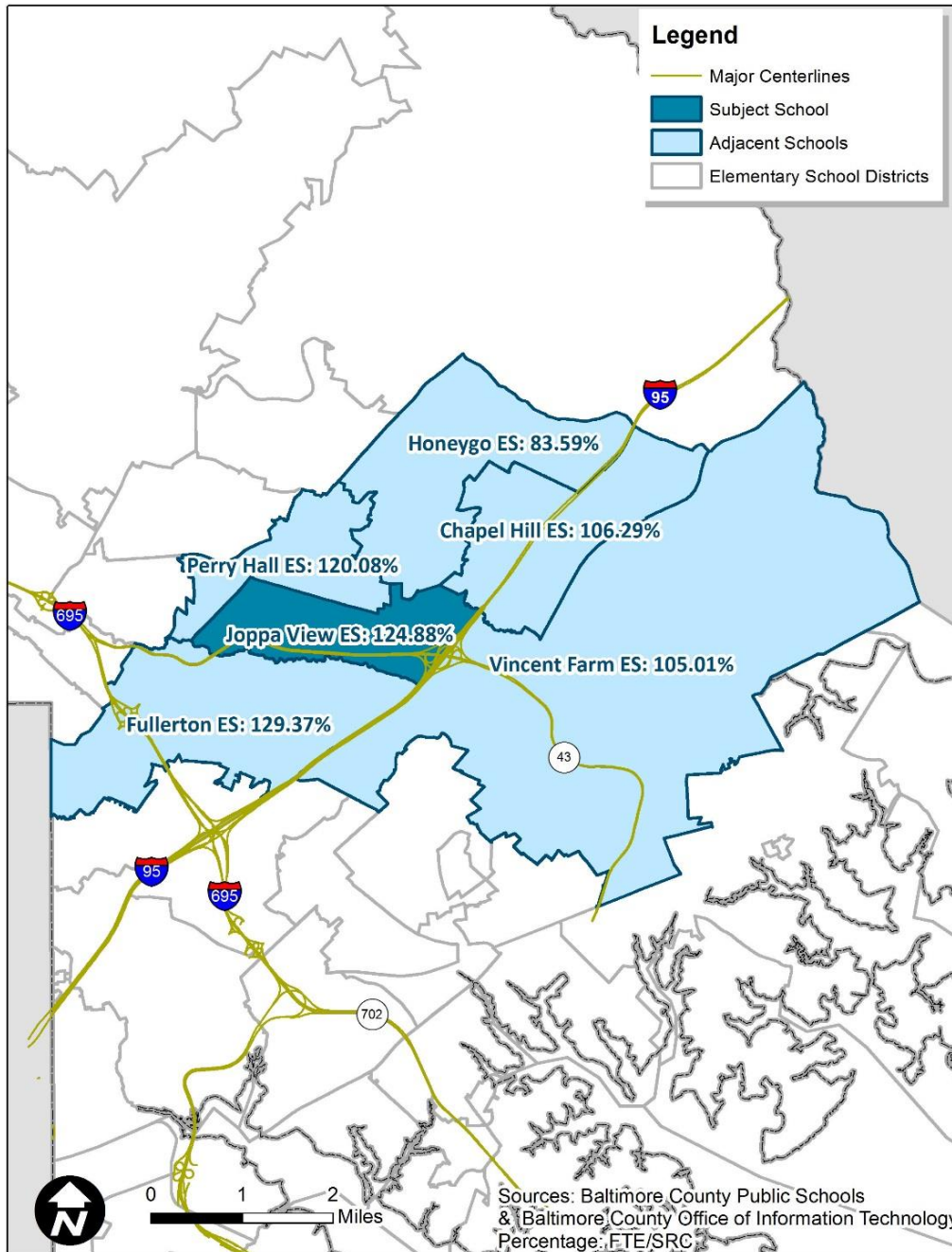
Harford Hills Elementary School's enrollment of September 30, 2018 is 403. The State Rated Capacity (SRC) for this school is 323. Based on these numbers, Harford Hills Elementary School is 124.77% of SRC. A school impact analysis will be performed for each proposed development project to determine whether a school adjacent to Harford Hills Elementary School (see map above) is overcrowded under Section 32-6-103(f) of the Baltimore County Code. The County's \$1.3 billion Schools for Our Future capital program as outlined on pages 31-32 will factor into the school impact analysis as required by Section 32-6-103(f).

Johnnycake Elementary School



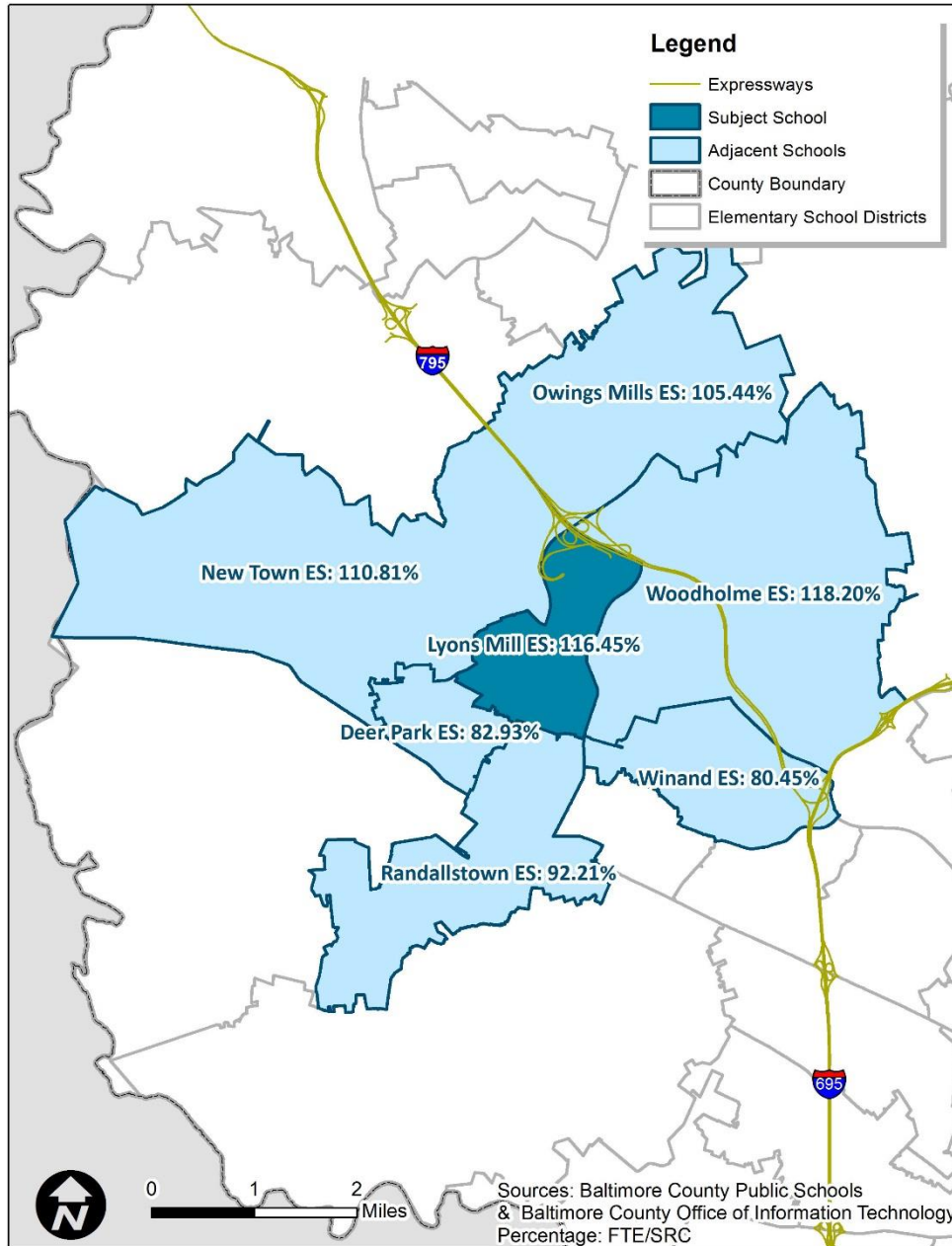
Johnnycake Elementary School’s enrollment of September 30, 2018 is 686. The State Rated Capacity (SRC) for this school is 559. Based on these numbers, Johnnycake Elementary School is 122.72% of SRC. A school impact analysis will be performed for each proposed development project to determine whether a school adjacent to Johnnycake Elementary School (see map above) is overcrowded under Section 32-6-103(f) of the Baltimore County Code. The County’s \$1.3 billion Schools for Our Future capital program as outlined on pages 31-32 will factor into the school impact analysis as required by Section 32-6-103(f).

Joppa View Elementary School



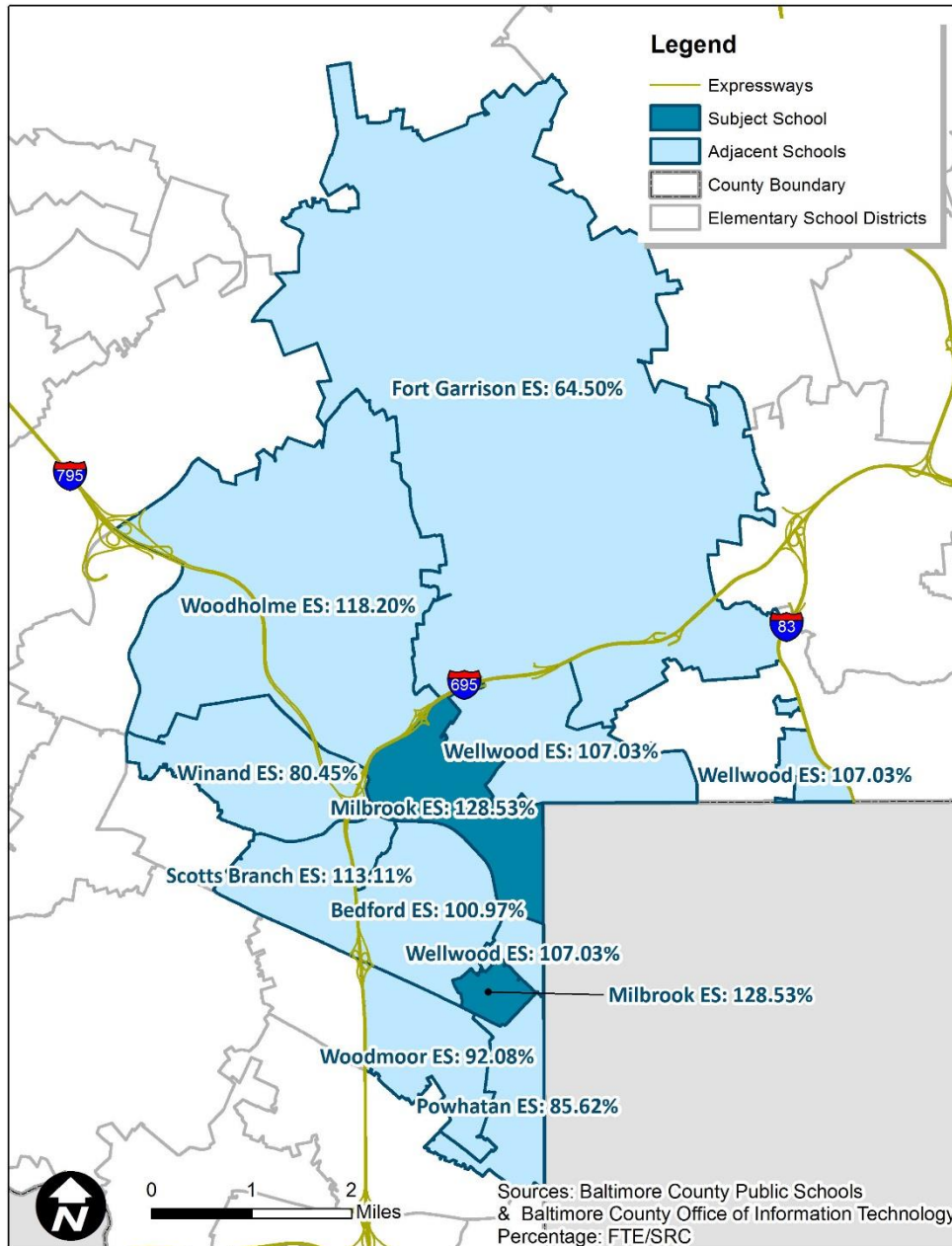
Joppa View Elementary School’s enrollment of September 30, 2018 is 793. The State Rated Capacity (SRC) for this school is 635. Based on these numbers, Joppa View Elementary School is 124.88% of SRC. A school impact analysis will be performed for each proposed development project to determine whether a school adjacent to Joppa View Elementary School (see map above) is overcrowded under Section 32-6-103(f) of the Baltimore County Code. The County’s \$1.3 billion Schools for Our Future capital program as outlined on pages 31-32 will factor into the school impact analysis as required by Section 32-6-103(f).

Lyons Mill Elementary School



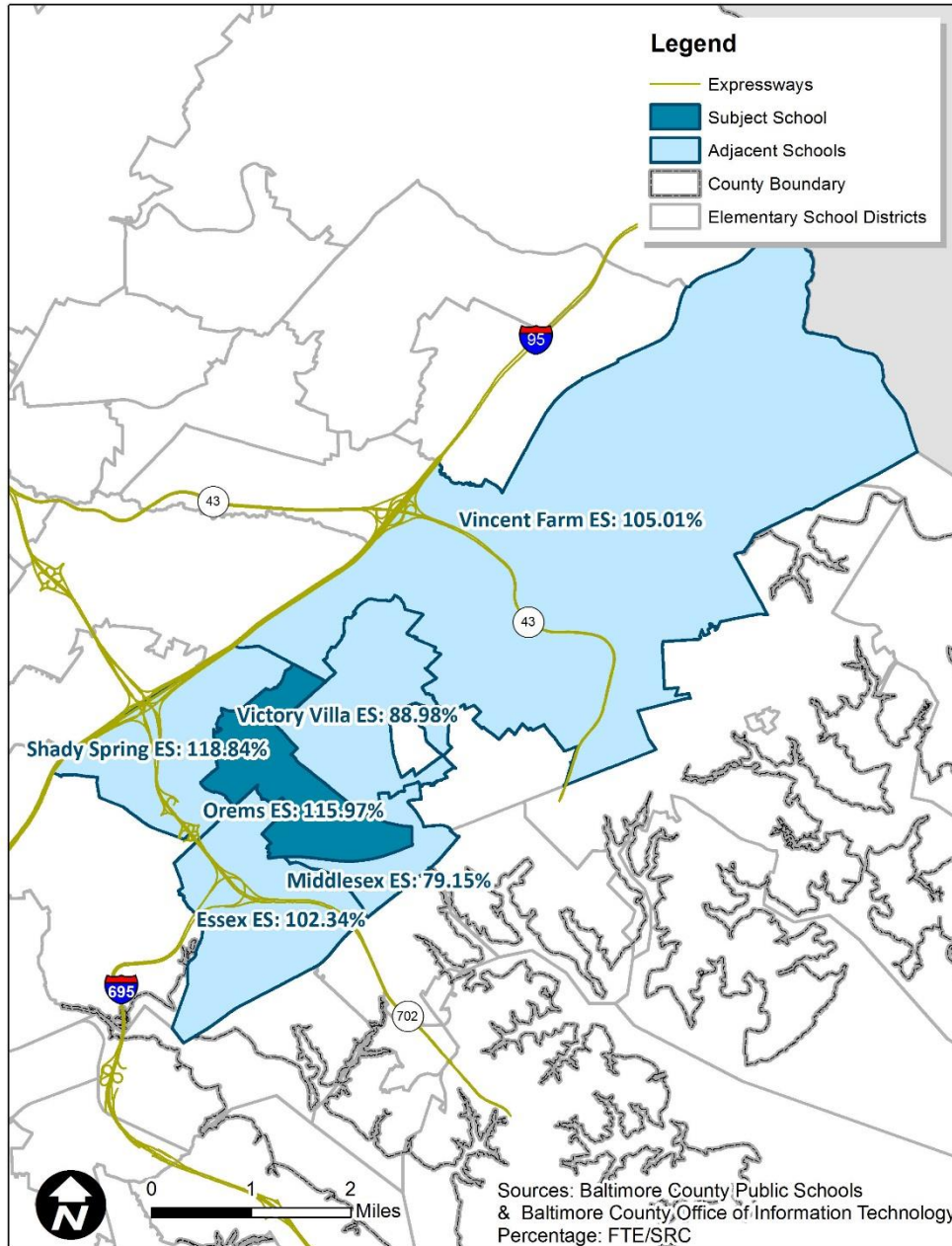
Lyons Mill Elementary School's enrollment of September 30, 2018 is 793. The State Rated Capacity (SRC) for this school is 681. Based on these numbers, Lyons Mill Elementary School is 116.45% of SRC. A school impact analysis will be performed for each proposed development project to determine whether a school adjacent to Lyons Mill Elementary School (see map above) is overcrowded under Section 32-6-103(f) of the Baltimore County Code. The County's \$1.3 billion Schools for Our Future capital program as outlined on pages 31-32 will factor into the school impact analysis as required by Section 32-6-103(f).

Milbrook Elementary School



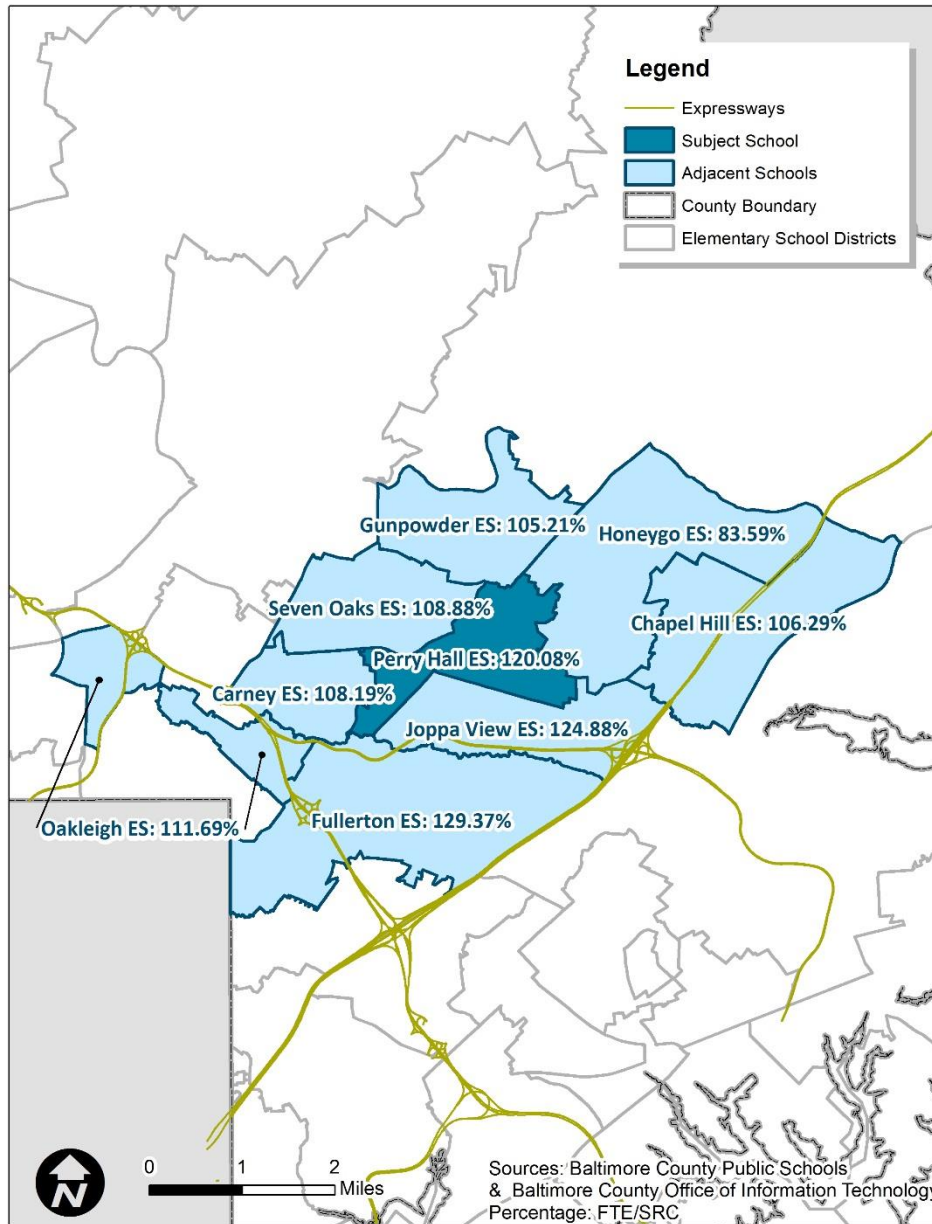
Milbrook Elementary School’s enrollment of September 30, 2018 is 410. The State Rated Capacity (SRC) for this school is 319. Based on these numbers, Milbrook Elementary School is 128.53% of SRC. A school impact analysis will be performed for each proposed development project to determine whether a school adjacent to Milbrook Elementary School (see map above) is overcrowded under Section 32-6-103(f) of the Baltimore County Code. The County’s \$1.3 billion Schools for Our Future capital program as outlined on pages 31-32 will factor into the school impact analysis as required by Section 32-6-103(f).

Orem Elementary School



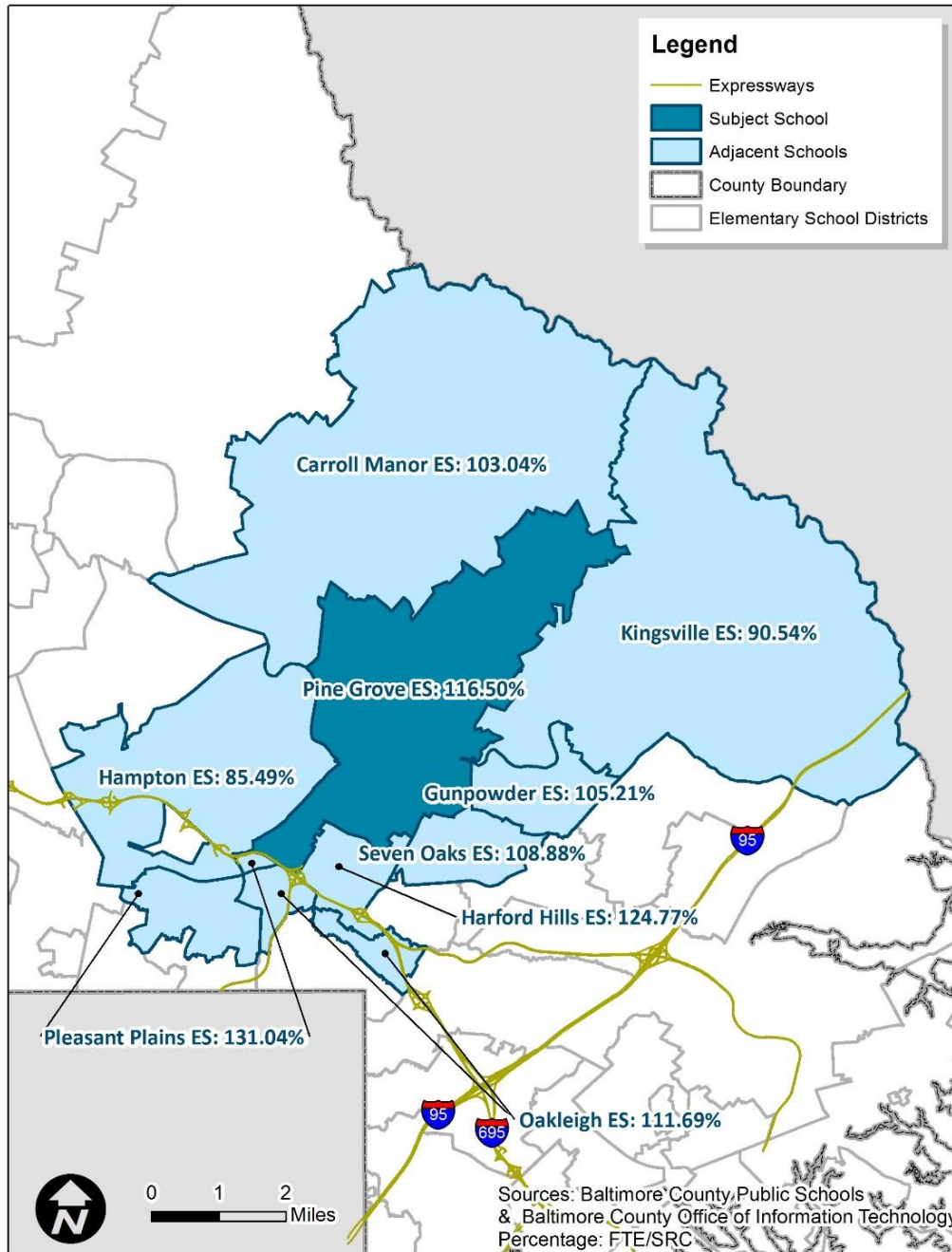
Orem Elementary School's enrollment of September 30, 2018 is 363. The State Rated Capacity (SRC) for this school is 313. Based on these numbers, Orem Elementary School is 115.97% of SRC. A school impact analysis will be performed for each proposed development project to determine whether a school adjacent to Orem Elementary School (see map above) is overcrowded under Section 32-6-103(f) of the Baltimore County Code. The County's \$1.3 billion Schools for Our Future capital program as outlined on pages 31-32 will factor into the school impact analysis as required by Section 32-6-103(f).

Perry Hall Elementary School



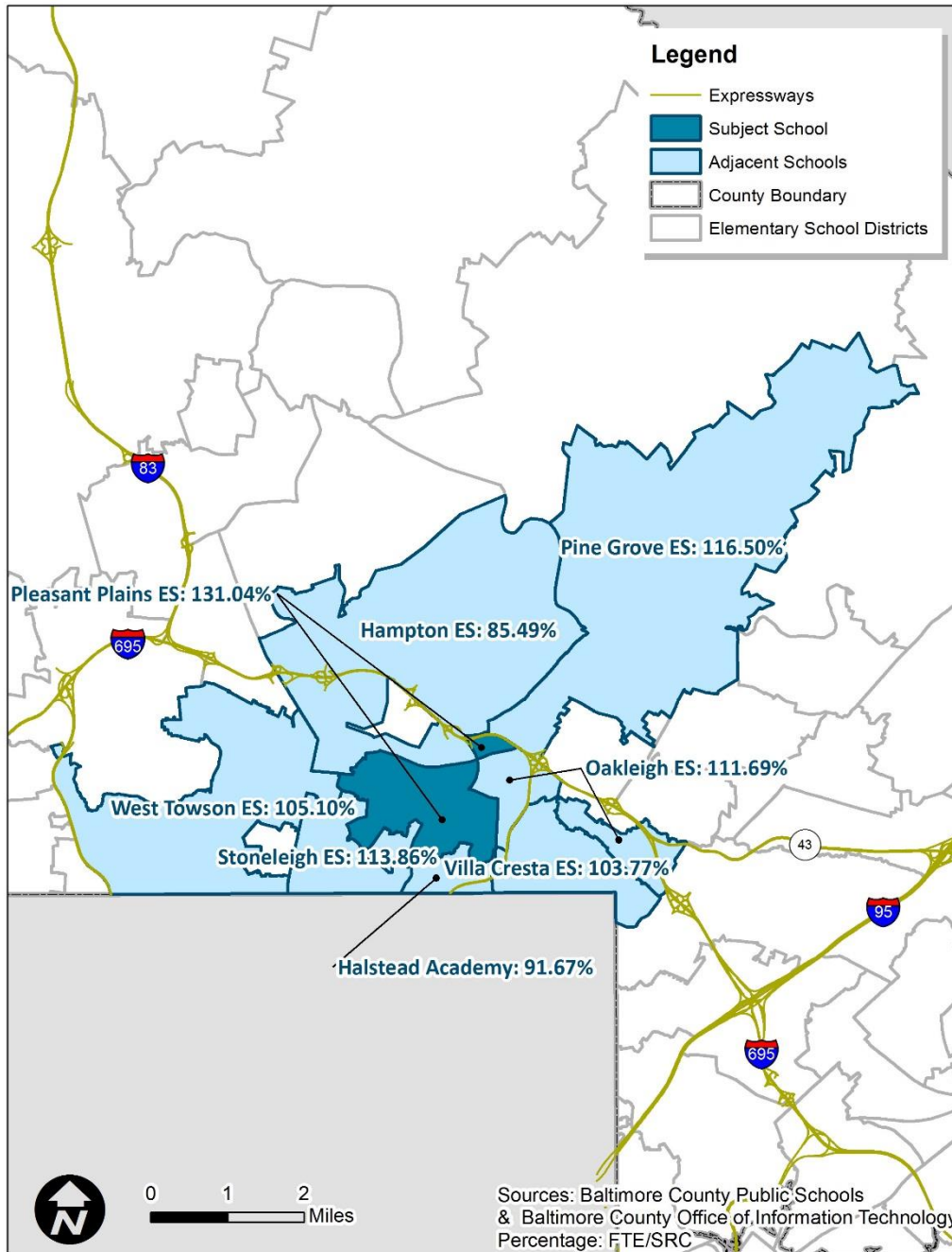
Perry Hall Elementary School's enrollment of September 30, 2018 is 634. The State Rated Capacity (SRC) for this school is 528. Based on these numbers, Perry Hall Elementary School is 120.08% of SRC. A school impact analysis will be performed for each proposed development project to determine whether a school adjacent to Perry Hall Elementary School (see map above) is overcrowded under Section 32-6-103(f) of the Baltimore County Code. The County's \$1.3 billion Schools for Our Future capital program as outlined on pages 31-32 will factor into the school impact analysis as required by Section 32-6-103(f).

Pine Grove Elementary School



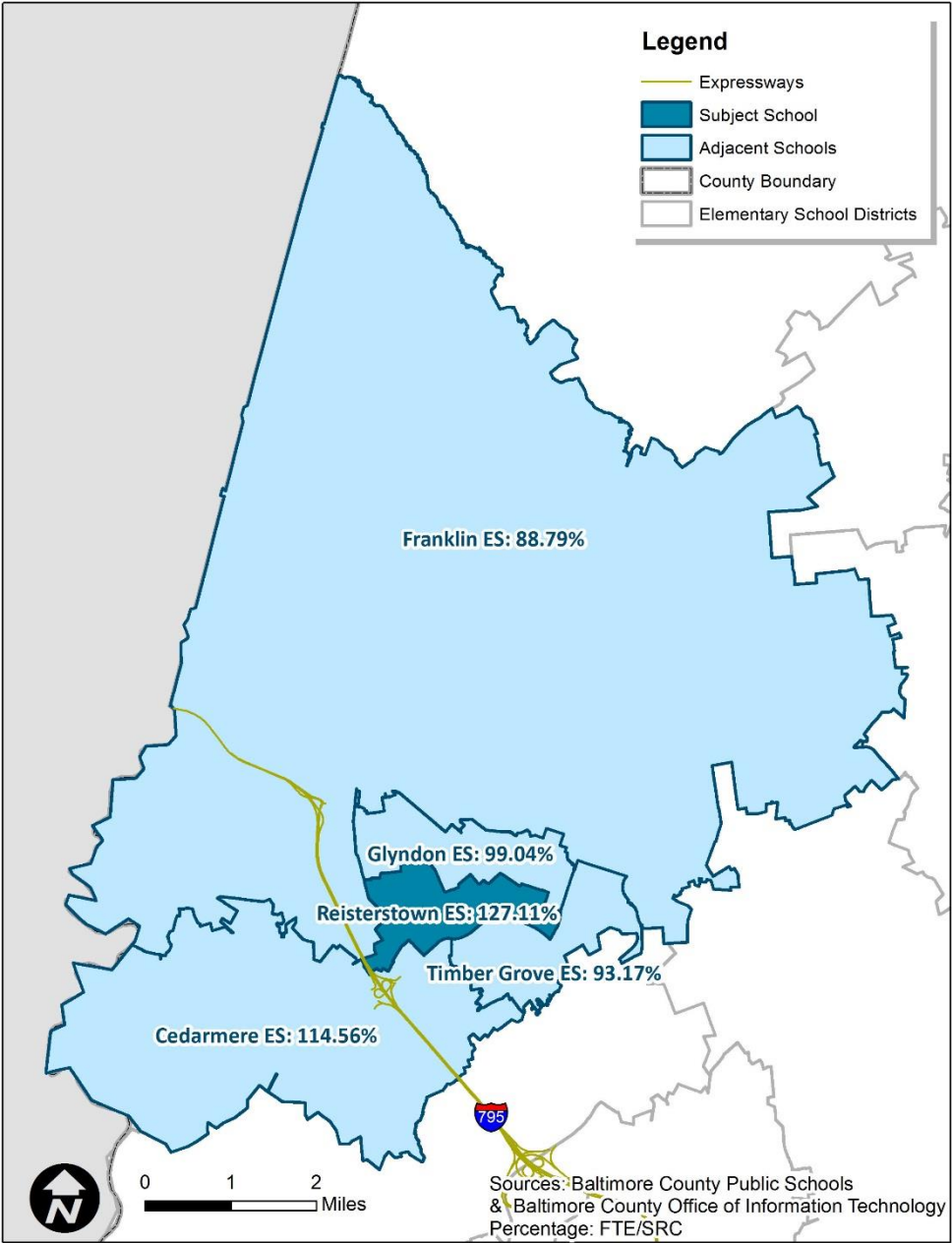
Pine Grove Elementary School’s enrollment of September 30, 2018 is 579. The State Rated Capacity (SRC) for this school is 497. Based on these numbers, Pine Grove Elementary School is 116.50% of SRC. A school impact analysis will be performed for each proposed development project to determine whether a school adjacent to Pine Grove Elementary School (see map above) is overcrowded under Section 32-6-103(f) of the Baltimore County Code. The County’s \$1.3 billion Schools for Our Future capital program as outlined on pages 31-32 will factor into the school impact analysis as required by Section 32-6-103(f).

Pleasant Plains Elementary School



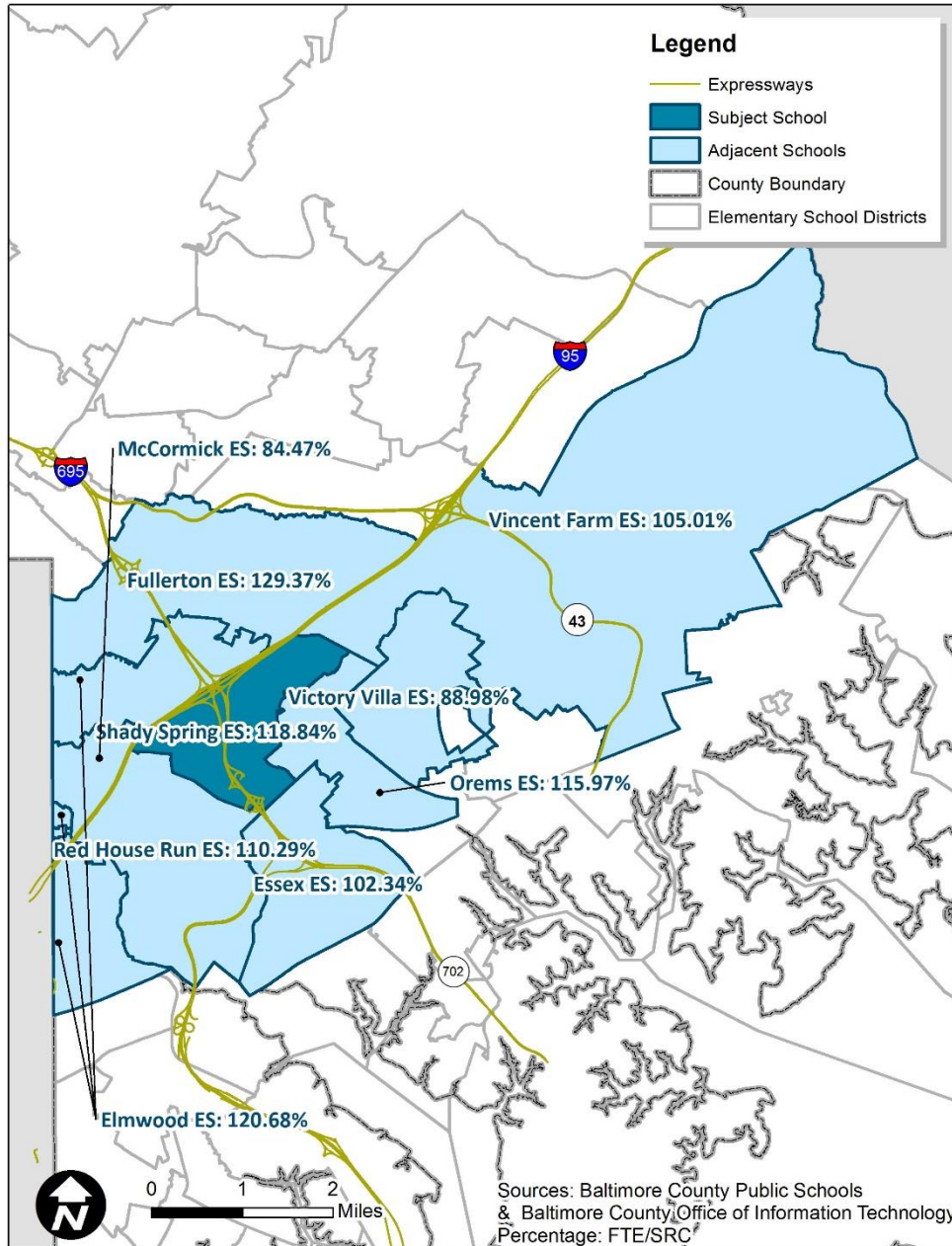
Pleasant Plains Elementary School’s enrollment of September 30, 2018 is 667. The State Rated Capacity (SRC) for this school is 509. Based on these numbers, Pleasant Plains Elementary School is 131.04% of SRC. A school impact analysis will be performed for each proposed development project to determine whether a school adjacent to Pleasant Plains Elementary School (see map above) is overcrowded under Section 32-6-103(f) of the Baltimore County Code. The County’s \$1.3 billion Schools for Our Future capital program as outlined on pages 31-32 will factor into the school impact analysis as required by Section 32-6-103(f).

Reisterstown Elementary School



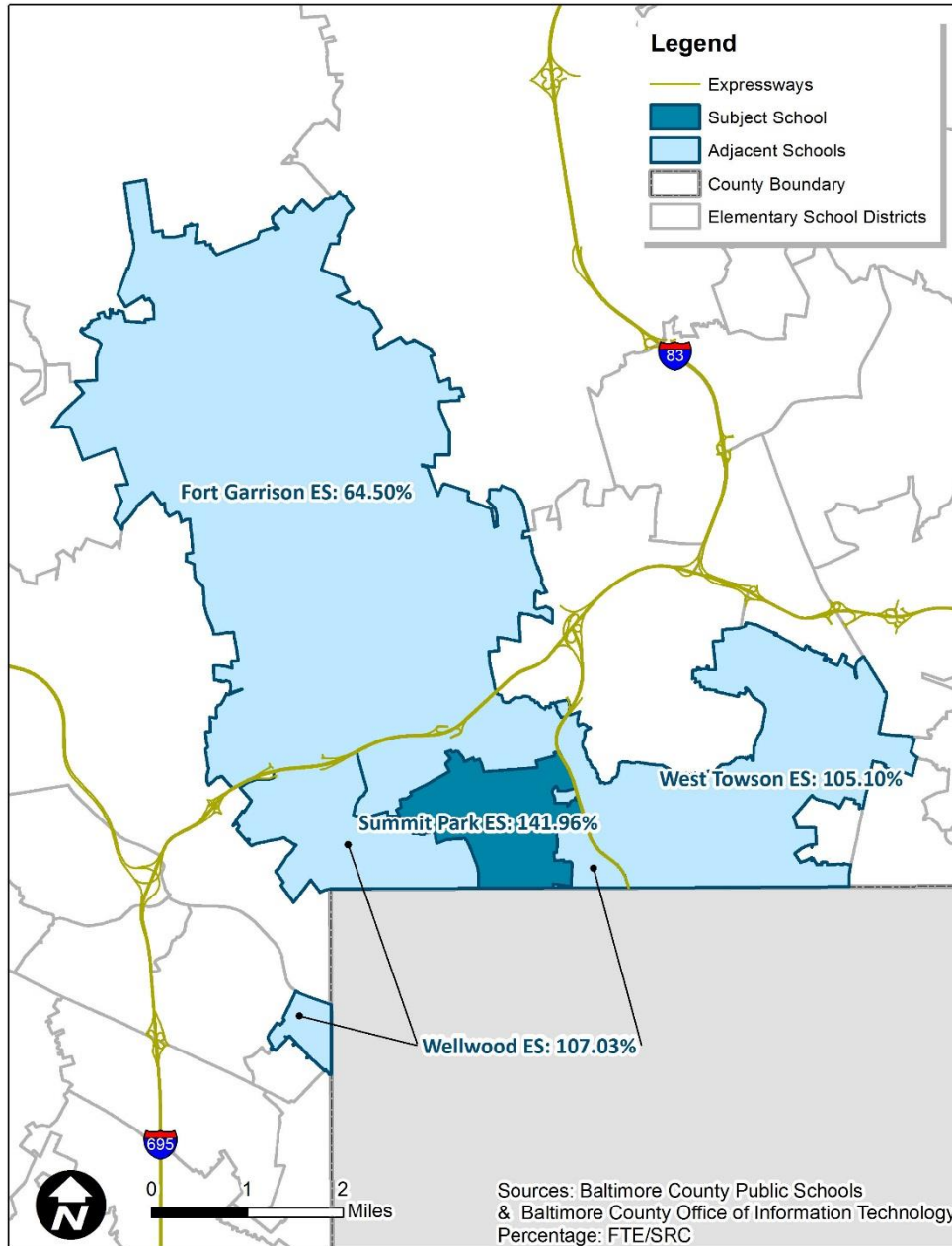
Reisterstown Elementary School’s enrollment of September 30, 2018 is 572. The State Rated Capacity (SRC) for this school is 450. Based on these numbers, Reisterstown Elementary School is 127.11% of SRC. A school impact analysis will be performed for each proposed development project to determine whether a school adjacent to Reisterstown Elementary School (see map above) is overcrowded under Section 32-6-103(f) of the Baltimore County Code. The County’s \$1.3 billion Schools for Our Future capital program as outlined on pages 31-32 will factor into the school impact analysis as required by Section 32-6-103(f).

Shady Spring Elementary School



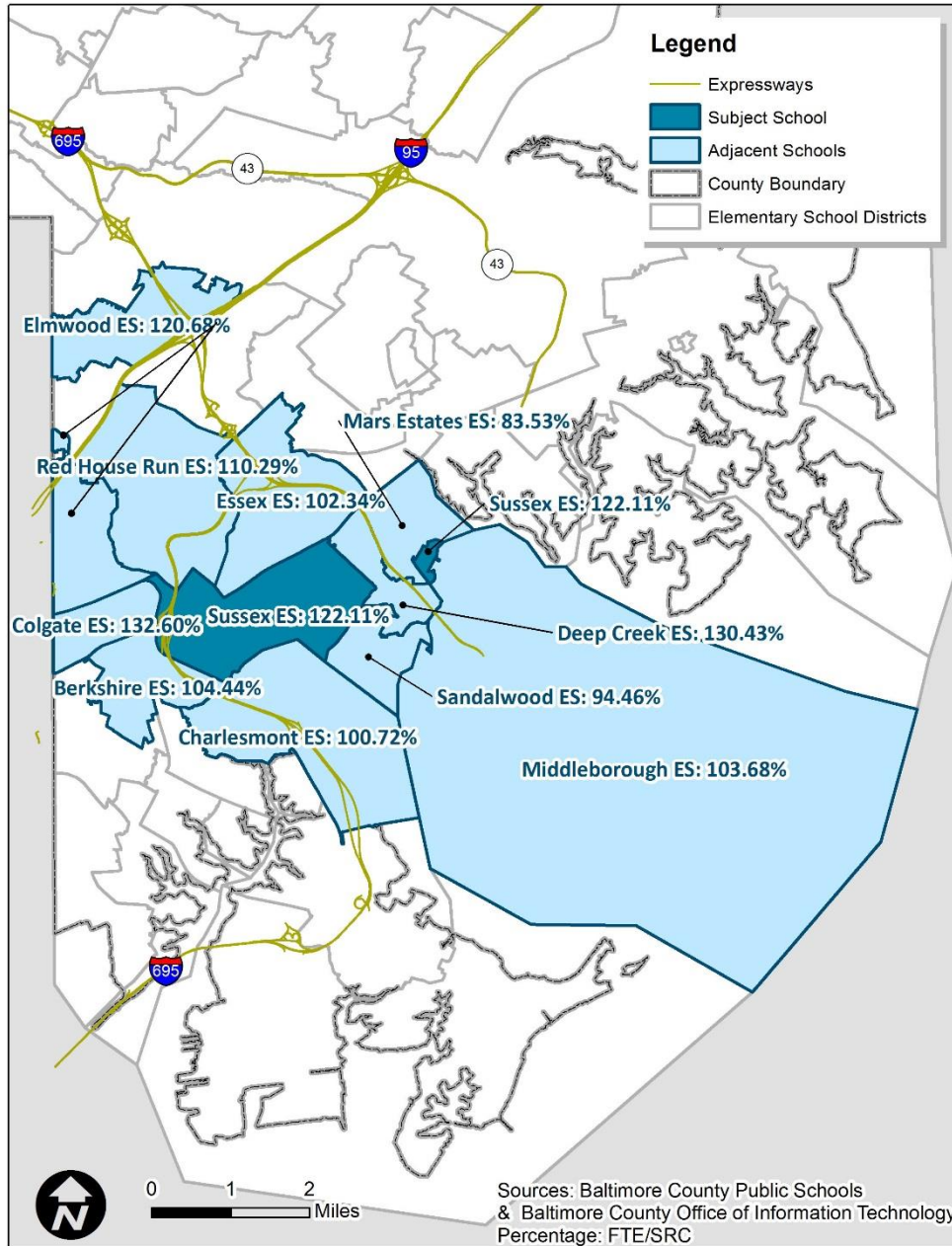
Shady Spring Elementary School’s enrollment of September 30, 2018 is 593. The State Rated Capacity (SRC) for this school is 499. Based on these numbers, Shady Spring Elementary School is 118.84% of SRC. A school impact analysis will be performed for each proposed development project to determine whether a school adjacent to Shady Spring Elementary School (see map above) is overcrowded under Section 32-6-103(f) of the Baltimore County Code. The County’s \$1.3 billion Schools for Our Future capital program as outlined on pages 31-32 will factor into the school impact analysis as required by Section 32-6-103(f).

Summit Park Elementary School



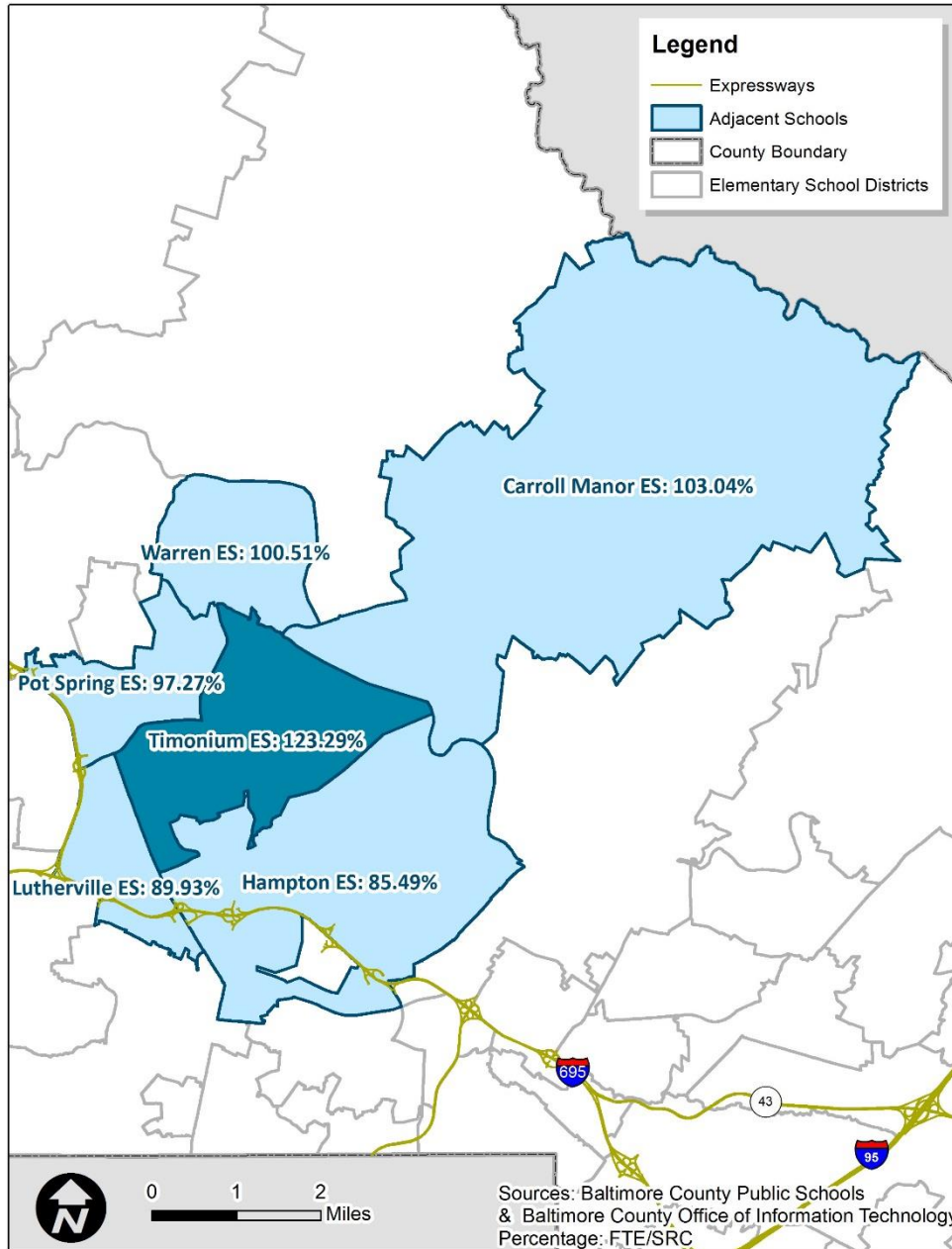
Summit Park Elementary School's enrollment of September 30, 2018 is 477. The State Rated Capacity (SRC) for this school is 336. Based on these numbers, Summit Park Elementary School is 141.96% of SRC. A school impact analysis will be performed for each proposed development project to determine whether a school adjacent to Summit Park Elementary School (see map above) is overcrowded under Section 32-6-103(f) of the Baltimore County Code. The County's \$1.3 billion Schools for Our Future capital program as outlined on pages 31-32 will factor into the school impact analysis as required by Section 32-6-103(f).

Sussex Elementary School



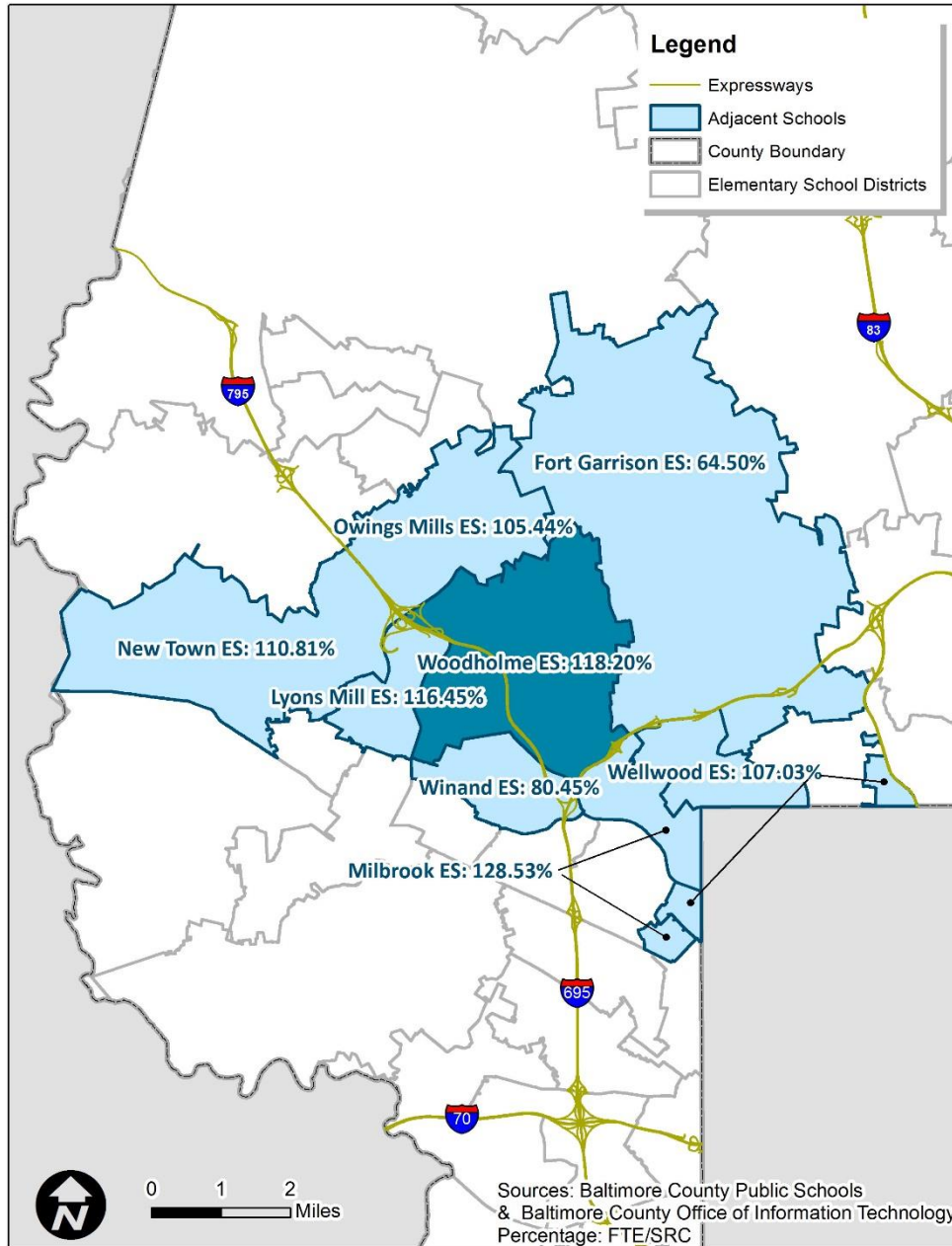
Sussex Elementary School's enrollment of September 30, 2018 is 464. The State Rated Capacity (SRC) for this school is 380. Based on these numbers, Sussex Elementary School is 122.11% of SRC. A school impact analysis will be performed for each proposed development project to determine whether a school adjacent to Sussex Elementary School (see map above) is overcrowded under Section 32-6-103(f) of the Baltimore County Code. The County's \$1.3 billion Schools for Our Future capital program as outlined on pages 31-32 will factor into the school impact analysis as required by Section 32-6-103(f).

Timonium Elementary School



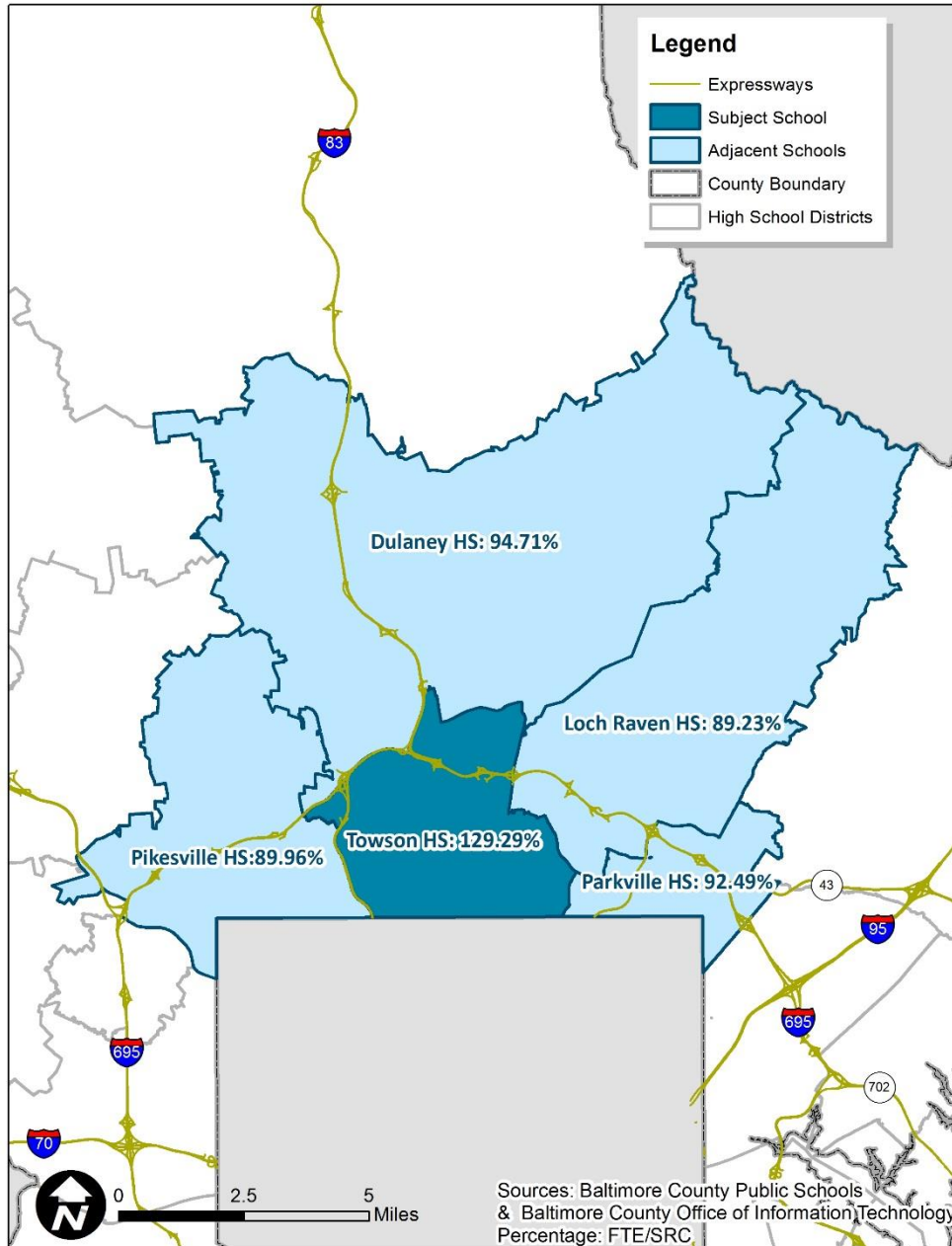
Timonium Elementary School's enrollment of September 30, 2018 is 487. The State Rated Capacity (SRC) for this school is 395. Based on these numbers, Timonium Elementary School is 123.29% of SRC. A school impact analysis will be performed for each proposed development project to determine whether a school adjacent to Timonium Elementary School (see map above) is overcrowded under Section 32-6-103(f) of the Baltimore County Code. The County's \$1.3 billion Schools for Our Future capital program as outlined on pages 31-32 will factor into the school impact analysis as required by Section 32-6-103(f).

Woodholme Elementary School



Woodholme Elementary School's enrollment of September 30, 2018 is 799. The State Rated Capacity (SRC) for this school is 676. Based on these numbers, Woodholme Elementary School is 118.20% of SRC. A school impact analysis will be performed for each proposed development project to determine whether a school adjacent to Woodholme Elementary School (see map above) is overcrowded under Section 32-6-103(f) of the Baltimore County Code. The County's \$1.3 billion Schools for Our Future capital program as outlined on pages 31-32 will factor into the school impact analysis as required by Section 32-6-103(f).

Towson High School



Towson High School's enrollment of September 30, 2018 is 1,629. The State Rated Capacity (SRC) for this school is 1,260. Based on these numbers, Towson High School is 129.29% of SRC. A school impact analysis will be performed for each proposed development project to determine whether a school adjacent to Towson High School (see map above) is overcrowded under Section 32-6-103(f) of the Baltimore County Code. In December 2018, the *BCPS High School Capacity & Conditions Study* was presented to the Board of Education. It calls for a new Towson High School with a total of 1,700 seats, providing additional 440 net new seats vis-à-vis the status quo for alleviating near-term overcrowding issues.

Appendix: Schools for Our Future, FY 2020

SCHOOLS FOR OUR FUTURE PROGRAM

New Schools									
#	CMD	Area	School	Seats Construct	Net New Seats	A/C Seats	County FY Funding	Estimated Completion	
1	1	SW	Catonsville ES (Bloomsbury)	705	300	705	FY15/16	AUG 2016	
2	1	SW	* Relay ES	715	285	285	FY15/16	AUG 2017	
3	1	SW	* Westowne ES	650	170	650	FY15/16	AUG 2016	
4	1	SW	* Lansdowne ES	735	422	700	FY16/17	AUG 2018	
5	1	SW	* Chadwick ES	735	327	327	FY18	AUG 2020	
6	4	NW	Lyons Mill ES	681	681	681	FY13/14	AUG 2015	
7	2	NW	* Summit Park ES	709	373	373	FY18/20	TBD	
8	2	NW	* Bedford ES	696	387	696	FY18/20	TBD	
9	4	NW	* Deer Park ES	735	284	284	FY20	TBD	
10	3	C	Mays Chapel ES	702	702	702	FY12	AUG 2014	
11	6	NE	* Victory Villa ES	735	409	735	FY16/17	AUG 2018	
12	5	NE	Honeygo ES	725	725	725	FY16/17	AUG 2018	
13	6	NE	Ridge Road Site ES	709	709	709	FY18/20	TBD	
14	6	NE	* Red House Run ES	700	214	214	FY20	TBD	
15	5	NE	Nottingham Site MS	1,410	1,410	1,410	FY18/20	TBD	
16	7	SE	* Berkshire ES	625	197	625	FY18/20	AUG 2020	
17	7	SE	* Colgate ES	510	191	510	FY18/20	AUG 2020	
18	7	SE	* Dundalk ES	722	132	722	FY18	AUG 2019	
Subtotal				13,199	7,918	11,053			

* Schools to be demolished upon replacement for improved operating efficiency and energy savings.

Additions									
#	CMD	Area	School	Seats Construct	Net New Seats	A/C Seats	County FY Funding	Estimated Completion	
1	1	SW	Westchester ES	193	193	193	FY15/16	AUG 2016	
2	4	NW	Scotts Branch ES	100	100	100	FY20	TBD	
3	2	NW	Pikesville HS	13	13	1,019	FY14/15/16	AUG 2016	
4	3	C	Sparks ES	194	194	194	FY14	AUG 2015	
5	5	C	Stoneleigh ES	200	200	700	FY12/13	AUG 2013	
6	3	C	Hampton ES	200	200	648	FY12	AUG 2013	
7	3	C	Hereford HS	318	318	1,548	FY12/13	AUG 2015	
8	3	C	Padonia International ES	264	264	264	FY15	AUG 2018	
9	3	NE	Pine Grove MS	130	130	130	FY18/20	TBD	
Subtotal				1,612	1,612	4,796			

Air Conditioning Initiative									
#	CMD	Area	School	Seats Construct	Net New Seats	A/C Seats	County FY Funding	Estimated Completion of A/C in Classrooms	
1	1	SW	Baltimore Highlands ES			549	FY17	AUG 2017	
2	1	SW	Edmondson Heights ES			538	FY17	AUG 2017	
3	1	SW	Arbutus ES (Aging Schools)			405	N/A	AUG 2014	
4	1	SW	Arbutus MS* (Energy Perf Cont)			1,011	N/A	AUG 2017	
5	1	SW	Johnnycake ES			559	FY11	AUG 2012	
6	1	SW	Riverview ES			572	FY11	AUG 2012	
7	4	SW	Hebbville ES			540	FY13/14	AUG 2014	
8	4	SW	Featherbed Lane ES			654	FY14	AUG 2015	
9	4	SW	Woodmoor ES			631	FY13/14	AUG 2014	
10	1	SW	Southwest Academy			1,101	FY17 Sup App	AUG 2017	
11	4	NW	Church Lane ES			476	FY17	AUG 2017	
12	2	NW	Reisterstown ES			450	FY17	AUG 2017	
13	2	NW	Fort Garrison ES			431	FY13/14	AUG 2014	
14	2	NW	Sudbrook Magnet MS			1,060	FY13/14	OCT 2015	
15	4	NW	Scotts Branch ES			511	FY14	APR 2016	
16	4	NW	Randallstown ES			398	FY11	AUG 2012	
17	2	NW	Old Court MS			983	FY11	AUG 2012	
18	2	NW	Wellwood ES			455	FY14	AUG 2015	
19	2	NW	Franklin ES			473	FY13/14	MAY 2015	
20	2	NW	Franklin MS			1,389	FY17	AUG 2017	

Air Conditioning Initiative								
#	CMD	Area	School	Seats Construct	Net New Seats	A/C Seats	County FY Funding	estimated Completion of A/C in Classrooms
21	2	NW	Franklin HS			1,647	FY17 Sup App	AUG 2018
22	3	C	Pot Spring ES			477	FY17	AUG 2017
23	5	C	Oakleigh ES			496	FY17	AUG 2017
24	3	C	Timonium ES			395	FY13/14	AUG 2015
25	5	C	Loch Raven Academy			901	FY11	AUG 2012
26	3	C	Ridgely MS			1,070	FY11	AUG 2012
27	6	C	Halstead Academy			516	FY15	AUG 2016
28	3	C	Lutherville Laboratory (Energy Perf Cont)			407	N/A	AUG 2014
29	3	C	Carroll Manor ES (Energy Perf Cont)			362	N/A	AUG 2014
30	3	C	Hereford MS (Aging Schools)			1,123	N/A	AUG 2015
31	5	C	Dumbarton MS			1,114	FY14	APR 2018
32	5	C	Pleasant Plains ES			509	FY16	AUG 2017
33	5	C	Villa Cresta ES			637	FY16	AUG 2016
34	5	NE	Carney ES			551	FY16	AUG 2016
35	5	NE	Joppa View ES			635	FY16	AUG 2016
36	5	NE	Chapel Hill ES			636	FY17	AUG 2017
37	6	NE	Golden Ring MS			849	FY17 Sup App	AUG 2017
38	5	NE	Harford Hills ES			323	FY11	AUG 2012
39	6	NE	Glenmar ES			371	FY11	AUG 2012
40	6	NE	Middle River MS			1,007	FY17 Sup App	AUG 2017
41	6	NE	Orems ES			313	FY17	AUG 2017
42	6	NE	Elmwood ES (Energy Perf Cont)			474	N/A	AUG 2014
43	5	NE	Seven Oaks (Energy Perf Cont)			428	N/A	AUG 2014
44	6	NE	Overlea HS			1,230	FY14/15	APR 2017
45	7	NE	Stemmers Run MS			1,154	FY17 Sup App	AUG 2017
46	6	NE	Parkville MS			1,089	FY14	AUG 2015
47	7	NE	Middlesex ES			517	FY13/14	AUG 2014
48	5	NE	Kingsville ES			349	FY17	AUG 2017
49	7	NE	Kenwood HS			1,918	FY17 Sup App	DEC 2018
50	6	SE	Chase ES			393	FY16	AUG 2016
51	7	SE	Middleborough ES			326	FY13/14	MAY 2015
52	7	SE	Deep Creek ES			368	FY11	AUG 2012
53	7	SE	Norwood ES			521	FY11	AUG 2012
54	7	SE	Sussex ES			380	FY13/14	MAY 2015
55	6	SE	Hawthorne ES			587	FY14	APR 2016
56	7	SE	Grange ES			385	FY17	AUG 2017
57	7	SE	Battle Grove ES			377	FY17	AUG 2017
58	7	SE	Charlesmont ES			418	FY17	AUG 2017
59	7	SE	Bear Creek ES			484	FY17	AUG 2017
Subtotal				-	-	38,923		

High School Initiative								
#	CMD	Area	School	Seats Construct	Net New Seats	A/C Seats	County FY Funding	estimated Completion of A/C in Classrooms
1	1	SW	Woodlawn HS			2,129	FY16/17	AUG 2019
2	7	SE	Patapsco HS Ctr for Arts			1,302	FY16/17	AUG 2019
Subtotal				-	-	3,431		

Schools For Our Future			
	Seats Construct	Net New Seats	A/C Seats
TOTAL	14,811	9,530	58,203