

2017 – 2018 School Adequate Public Facilities Ordinance Report and Maps



**Baltimore County Department of Planning
May 1, 2018**

Report Summary

Section 32-6-103(f) of the Baltimore County Code requires that the Department of Planning furnish the School Adequate Public Facilities Ordinance Report and Maps using September 30, 2017 school enrollment data, indicating overcrowded school districts in accordance with parameters in the referenced County Code.

The full time equivalent (FTE) enrollments of September 30, 2017 and the same school year's state rated capacity (SRC) are presented for all the elementary, middle, and high schools in the first section of this report. The second section reviews schools that are at or over 115% of the SRC.

In the 2017-2018 school year, the FTEs of 30 elementary schools, one middle school, and one high school are at or over 115% of their SRCs. A school impact analysis will be performed for each proposed development project to determine whether a school district is overcrowded under Section 32-6-103(f) of the Baltimore County Code.

Table of Contents

<i>September 30, 2017 Systemwide Capacities</i>	2
<i>Baltimore Highlands Elementary School</i>	7
<i>Cedarmere Elementary School</i>	8
<i>Chadwick Elementary School</i>	9
<i>Chapel Hill Elementary School</i>	10
<i>Colgate Elementary School</i>	11
<i>Deep Creek Elementary School</i>	12
<i>Elmwood Elementary School</i>	13
<i>Fifth District Elementary School</i>	14
<i>Fullerton Elementary School</i>	15
<i>Grange Elementary School</i>	16
<i>Gunpowder Elementary School</i>	17
<i>Harford Hills Elementary School</i>	18
<i>Johnnycake Elementary School</i>	19
<i>Joppa View Elementary School</i>	20
<i>Lansdowne Elementary School</i>	21
<i>Logan Elementary School</i>	22
<i>Milbrook Elementary School</i>	23
<i>New Town Elementary School</i>	24
<i>Oakleigh Elementary School</i>	25
<i>Perry Hall Elementary School</i>	26
<i>Pine Grove Elementary School</i>	27
<i>Pleasant Plains Elementary School</i>	28
<i>Reisterstown Elementary School</i>	29
<i>Scotts Branch Elementary School</i>	30
<i>Shady Spring Elementary School</i>	31
<i>Summit Park Elementary School</i>	32
<i>Sussex Elementary School</i>	33
<i>Victory Villa Elementary School</i>	34
<i>Vincent Farm Elementary School</i>	35
<i>Woodholme Elementary School</i>	36
<i>Perry Hall Middle School</i>	37
<i>Towson High School</i>	38
<i>Appendix: Schools for Our Future</i>	39

September 30, 2017 Systemwide Capacities

Elementary Schools	2017 FTE	2017 SRC	FTE/SRC
Arbutus ES	379	405	93.58%
Baltimore Highlands ES	687	549	125.14%
Battle Grove ES	282	377	74.80%
Bear Creek ES	453	484	93.60%
Bedford ES	325	309	105.18%
Berkshire ES	460	428	107.48%
Carney ES	556	574	96.86%
Carroll Manor ES	370	362	102.21%
Catonsville ES	579	705	82.13%
Cedarmere ES	550	474	116.03%
Chadwick ES	628	408	153.92%
Chapel Hill ES	815	636	128.14%
Charlesmont ES	439	418	105.02%
Chase ES	351	393	89.31%
Chatsworth ES	370	442	83.71%
Chesapeake Terrace ES	316	292	108.22%
Church Lane ES	411	476	86.34%
Colgate ES	424	319	132.92%
Cromwell Elementary Magnet	358	411	87.10%
Deep Creek ES	503	368	136.68%
Deer Park ES	421	451	93.35%
Dogwood ES	644	612	105.23%
Dundalk ES	673	590	114.07%
Edgemere ES	469	523	89.67%
Edmondson Heights ES	505	589	85.74%
Elmwood ES	557	474	117.51%
Essex ES	490	471	104.03%
Featherbed Lane ES	572	654	87.46%
Fifth District ES	317	274	115.69%
Fort Garrison ES	285	431	66.13%
Franklin ES	422	473	89.22%
Fullerton ES	613	463	132.40%
Glenmar ES	416	371	112.13%
Glyndon ES	518	520	99.62%
Grange ES	477	385	123.90%
Gunpowder ES	620	499	124.25%

September 30, 2017 Systemwide Capacities (cont'd)

Elementary Schools	2017 FTE	2017 SRC	FTE/SRC
Halethorpe ES	398	392	101.53%
Halstead Academy	493	516	95.54%
Hampton ES	553	648	85.34%
Harford Hills ES	412	323	127.55%
Hawthorne ES	538	587	91.65%
Hebbsville ES	437	540	80.93%
Hernwood ES	408	415	98.31%
Hillcrest ES	698	666	104.80%
Jacksonville ES	539	637	84.62%
Johnnycake ES	698	559	124.87%
Joppa View ES	813	635	128.03%
Kingsville ES	341	349	97.71%
Lansdowne ES	479	313	153.04%
Logan ES	599	517	115.86%
Lutherville Laboratory	389	407	95.58%
Lyons Mill ES	764	681	112.19%
Mars Estates ES	412	431	95.59%
Martin Blvd ES	315	291	108.25%
Mays Chapel ES	735	702	104.70%
McCormick ES	343	380	90.26%
Middleborough ES	359	326	110.12%
Middlesex ES	481	517	93.04%
Milbrook ES	422	319	132.29%
New Town ES	842	703	119.77%
Norwood ES (Pre K - 3)	460	521	88.29%
Oakleigh ES	649	496	130.85%
Oliver Beach ES	195	265	73.58%
Orems ES	302	313	96.49%
Owings Mills ES	735	699	105.15%
Padonia ES	462	529	87.33%
Perry Hall ES	747	528	141.48%
Pine Grove ES	575	497	115.69%
Pinewood ES	535	566	94.52%
Pleasant Plains ES	635	509	124.75%
Pot Spring ES	451	477	94.55%
Powhatan ES	272	313	86.90%

September 30, 2017 Systemwide Capacities (cont'd)

Elementary Schools	2017 FTE	2017 SRC	FTE/SRC
Prettyboy ES	446	398	112.06%
Randallstown ES	375	398	94.22%
Red House Run ES	538	486	110.70%
Reisterstown ES	570	450	126.67%
Relay ES	639	691	92.47%
Riderwood ES	412	463	88.98%
Riverview ES	555	572	97.03%
Rodgers Forge ES	433	396	109.34%
Sandalwood ES	523	542	96.49%
Sandy Plains ES	588	664	88.55%
Scotts Branch ES	601	511	117.61%
Seneca ES	467	409	114.18%
Seven Oaks ES	479	428	111.92%
Seventh District ES	391	461	84.82%
Shady Spring ES	681	499	136.47%
Sparks ES	516	604	85.43%
Stoneleigh ES	780	700	111.43%
Summit Park ES	473	336	140.77%
Sussex ES	460	380	121.05%
Timber Grove ES	611	600	101.83%
Timonium ES	447	395	113.16%
Victory Villa ES	394	326	120.86%
Villa Cresta ES	695	637	109.11%
Vincent Farm ES	901	699	128.90%
Warren ES	405	395	102.53%
Wellwood ES	497	455	109.23%
West Towson ES	497	451	110.20%
Westchester ES	645	692	93.21%
Westowne ES	651	650	100.15%
Winand ES	501	583	85.93%
Winfield ES	472	485	97.32%
Woodbridge ES	421	432	97.45%
Woodholme ES	809	676	119.67%
Woodmoor ES	536	631	84.94%
Total for Elementary Schools	54,150	51,672	104.80%

FTE: Full Time Equivalent Enrollment. SRC: State Rated Capacity.
 Systemwide, there are 2,478 seats greater than SRC.

September 30, 2017 Systemwide Capacities (cont'd)

Middle Schools	2017 FTE	2017 SRC	FTE/SRC
Arbutus MS	912	1,011	90.21%
Catonsville MS	875	774	113.05%
Cockeysville MS	911	1,049	86.84%
Deep Creek MS	809	1,113	72.69%
Deer Park Magnet MS	1,272	1,368	92.98%
Dumbarton MS	1,164	1,114	104.49%
Dundalk MS	709	814	87.10%
Franklin MS	1,298	1,389	93.45%
General John Stricker MS	736	1,100	66.91%
Golden Ring MS	691	849	81.39%
Hereford MS	1,013	1,123	90.20%
Holabird MS (4 - 8)	948	967	98.04%
Lansdowne MS	762	954	79.87%
Loch Raven Academy	743	901	82.46%
Middle River MS	837	1,007	83.12%
Northwest Academy of Health Sciences	785	983	79.86%
Parkville MS	1,129	1,089	103.67%
Perry Hall MS	1,895	1,643	115.34%
Pikesville MS	1,013	1,006	100.70%
Pine Grove MS	927	1,293	71.69%
Ridgely MS	1,188	1,070	111.03%
Southwest Academy	888	1,101	80.65%
Sparrows Point MS	566	573	98.78%
Stemmers Run MS	777	1,154	67.33%
Sudbrook Magnet MS	1,063	1,060	100.28%
Windsor Mill MS	468	720	65.00%
Woodlawn MS	615	953	64.53%
Total for Middle Schools	24,994	28,178	88.70%

FTE: Full Time Equivalent Enrollment.

SRC: State Rated Capacity.

Systemwide, there are 3,184 seats fewer than SRC.

September 30, 2017 Systemwide Capacities (cont'd)

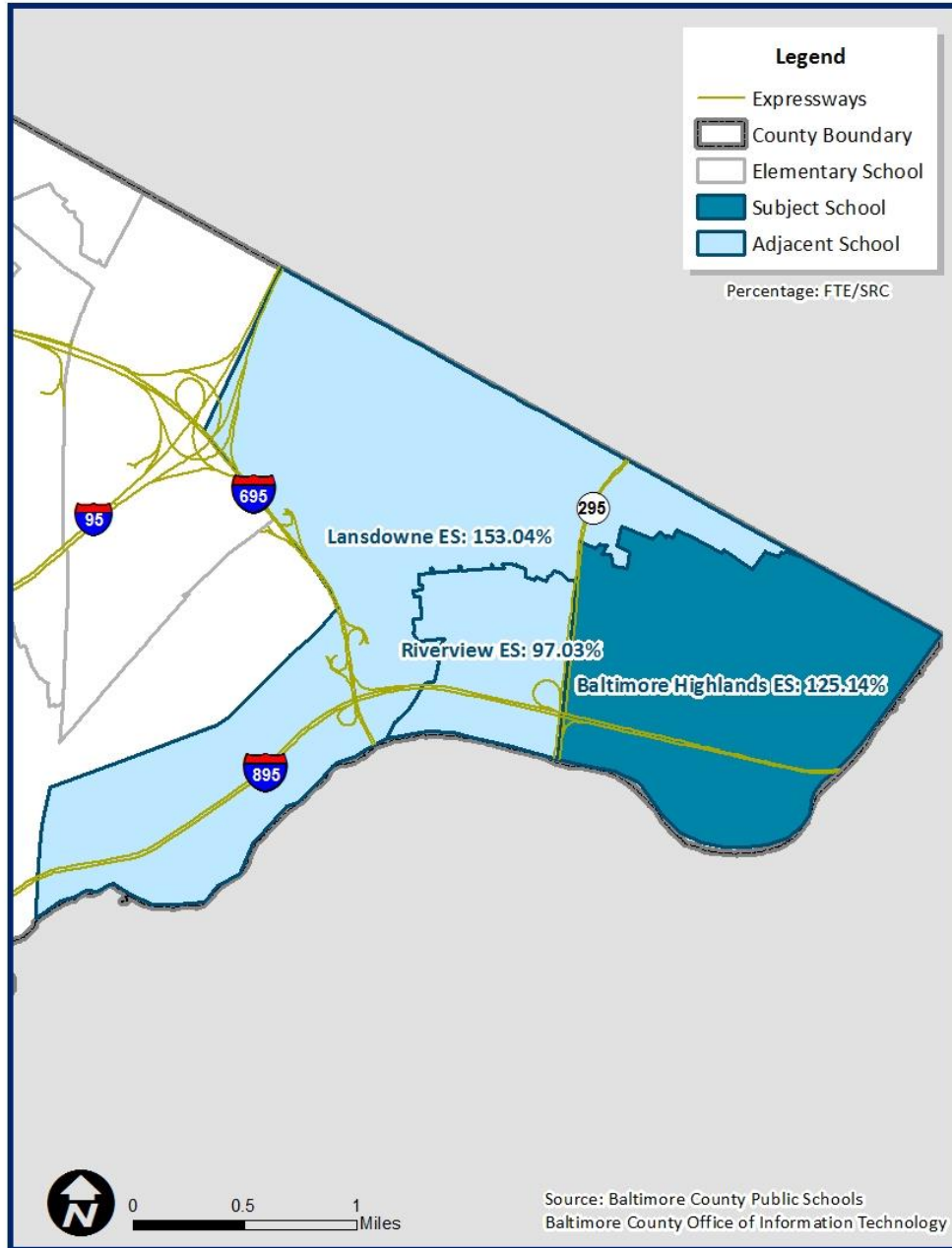
High Schools	2017 FTE	2017 SRC	FTE/SRC
Catonsville HS	1,783	1,750	101.89%
Chesapeake HS	976	1,019	95.78%
Dulaney HS	1,802	1,984	90.83%
Dundalk HS	1,596	1,446	110.37%
Eastern Tech HS	1,176	1,339	87.83%
Franklin HS	1,576	1,647	95.69%
G.W. Carver Center	912	1,029	88.63%
Hereford HS	1,267	1,548	81.85%
Kenwood HS	1,582	1,918	82.48%
Lansdowne HS	1,342	1,420	94.51%
Loch Raven HS	859	975	88.10%
Milford Mill Academy	1,300	1,465	88.74%
New Town HS	1,064	1,303	81.66%
Overlea HS	971	1,230	78.94%
Owings Mills HS	1,050	1,103	95.19%
Parkville HS	1,796	2,037	88.17%
Patapsco HS	1,440	1,302	110.60%
Perry Hall HS	2,036	2,110	96.49%
Pikesville HS	875	1,006	86.98%
Randallstown HS	987	1,379	71.57%
Sparrows Point HS	952	871	109.30%
Towson HS	1,553	1,260	123.25%
Western Sch. of Tech.	905	1,009	89.69%
Woodlawn HS	1,479	2,129	69.47%
Total for High Schools	31,279	34,279	91.25%

FTE: Full Time Equivalent Enrollment.

SRC: State Rated Capacity.

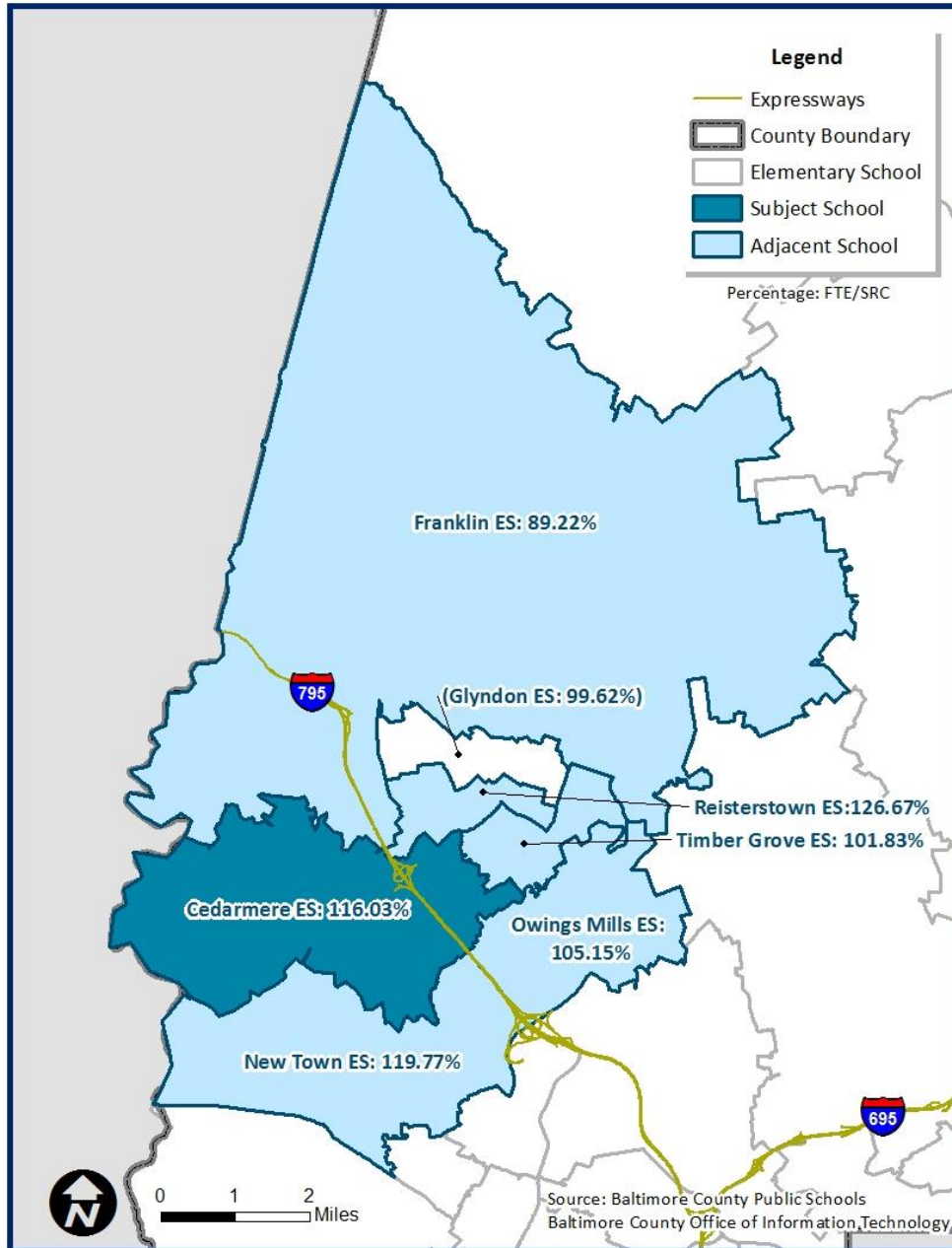
Systemwide, there are 3,000 seats fewer than SRC.

Baltimore Highlands Elementary School



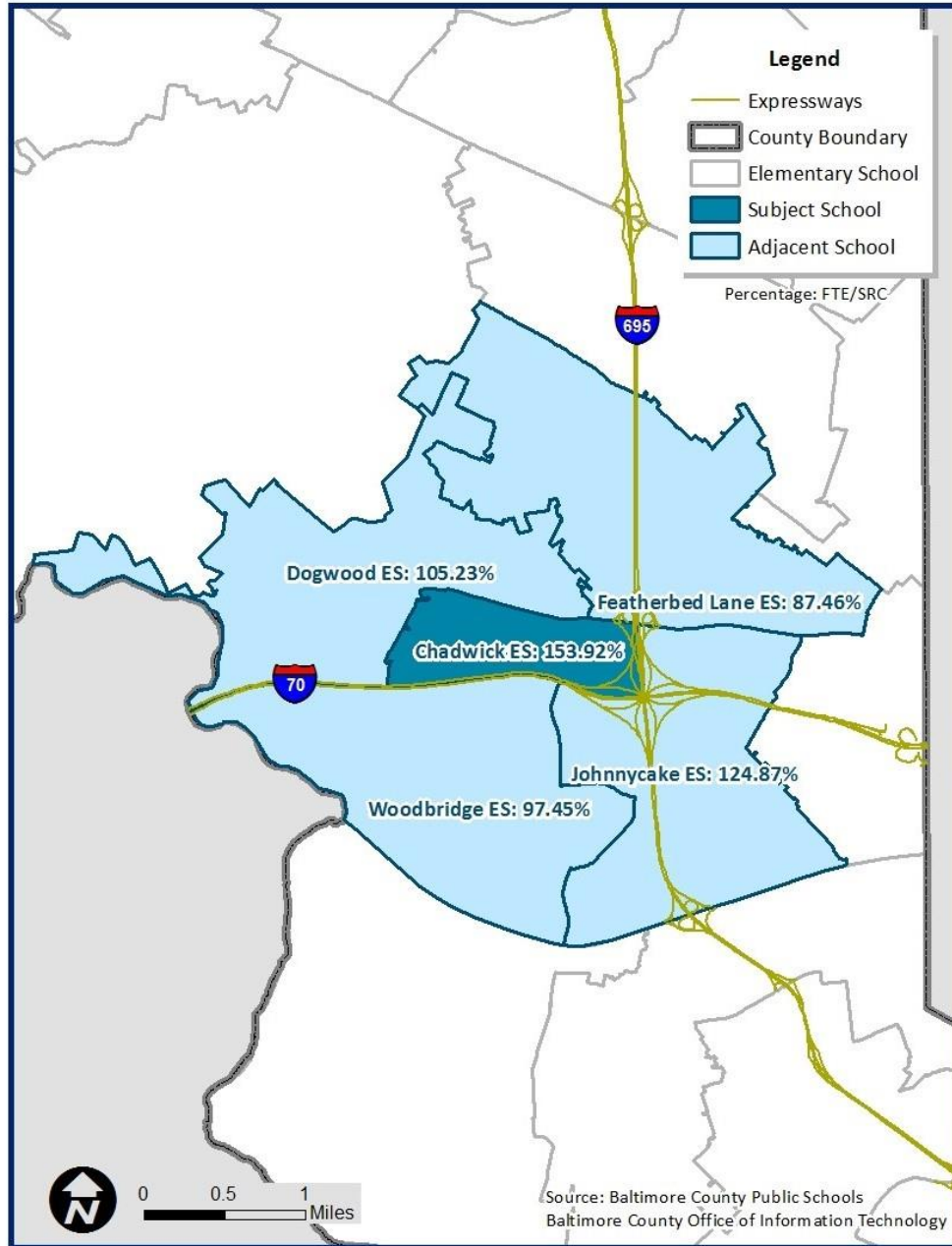
The Baltimore Highlands Elementary School's enrollment of September 30, 2017 is 687. The State Rated Capacity (SRC) for this school is 549. Based on these numbers, Baltimore Highlands Elementary School is 125.14% of SRC. A school impact analysis will be performed for each proposed development project to determine whether a school adjacent to Baltimore Highlands Elementary School (see map above) is overcrowded under Section 32-6-103(f) of the Baltimore County Code. The County's \$1.3 billion Schools for Our Future capital program as outlined on pages 39-40 will factor into the school impact analysis as required by Section 32-6-103(f).

Cedarmere Elementary School



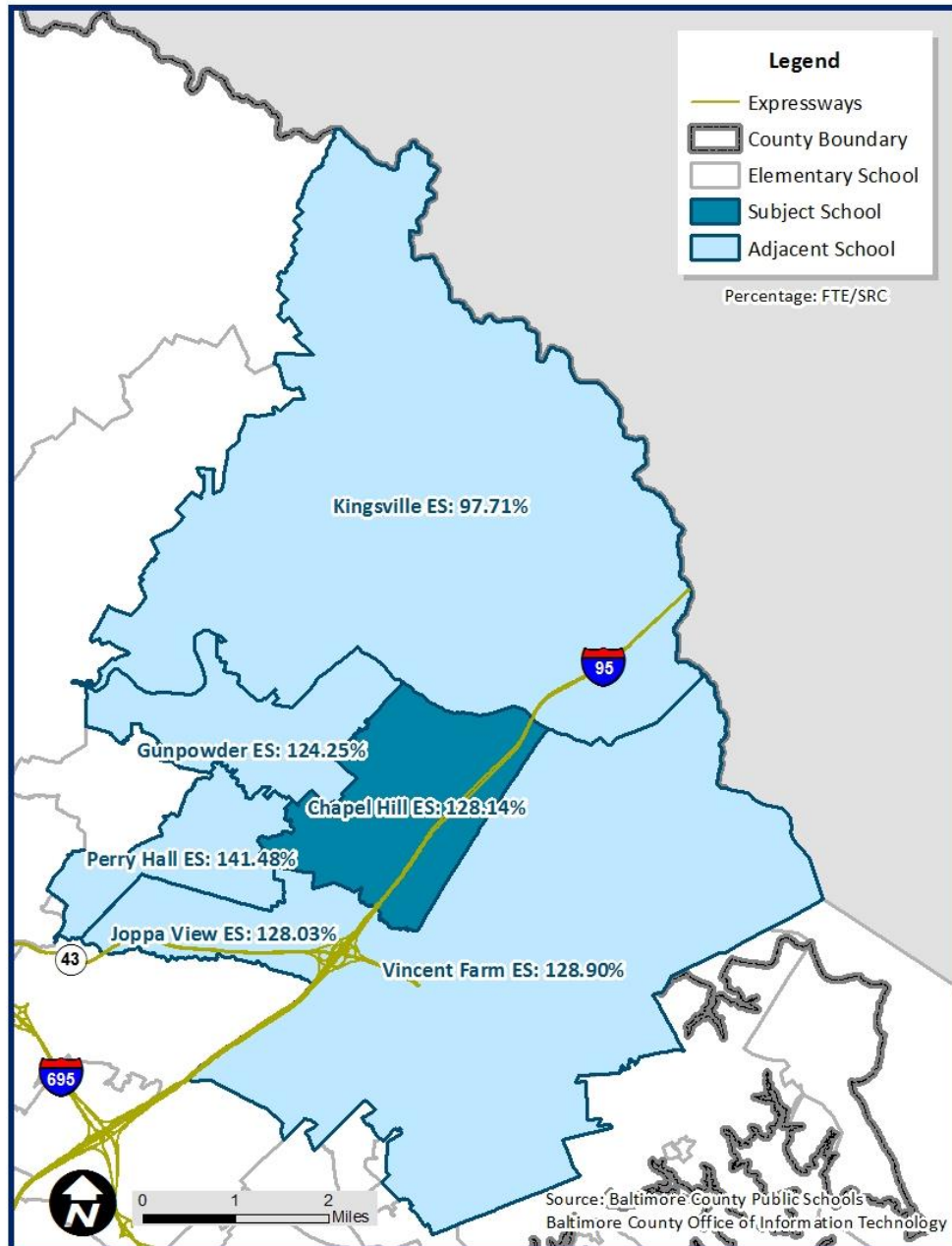
The Cedarmere Elementary School's enrollment of September 30, 2017 is 550. The State Rated Capacity (SRC) for this school is 474. Based on these numbers, Cedarmere Elementary School is 116.03% of SRC. A school impact analysis will be performed for each proposed development project to determine whether a school adjacent to Cedarmere Elementary School (see map above) is overcrowded under Section 32-6-103(f) of the Baltimore County Code. The County's \$1.3 billion Schools for Our Future capital program as outlined on pages 39-40 will factor into the school impact analysis as required by Section 32-6-103(f).

Chadwick Elementary School



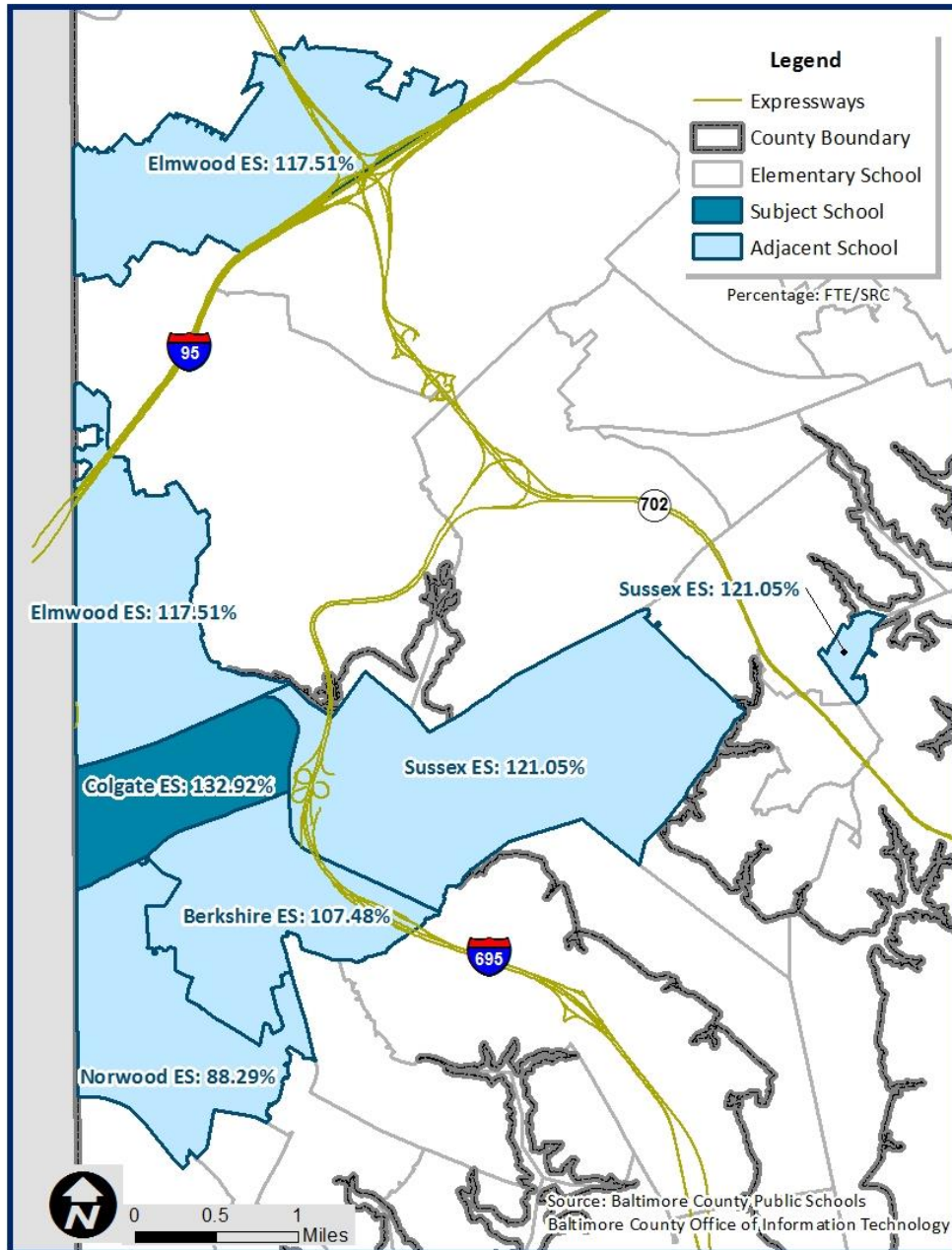
The Chadwick Elementary School's enrollment of September 30, 2017 is 628. The State Rated Capacity (SRC) for this school is 408. Based on these numbers, Chadwick Elementary School is 153.92% of SRC. A school impact analysis will be performed for each proposed development project to determine whether a school adjacent to Chadwick Elementary School (see map above) is overcrowded under Section 32-6-103(f) of the Baltimore County Code. The County's \$1.3 billion Schools for Our Future capital program as outlined on pages 39-40 will factor into the school impact analysis as required by Section 32-6-103(f).

Chapel Hill Elementary School



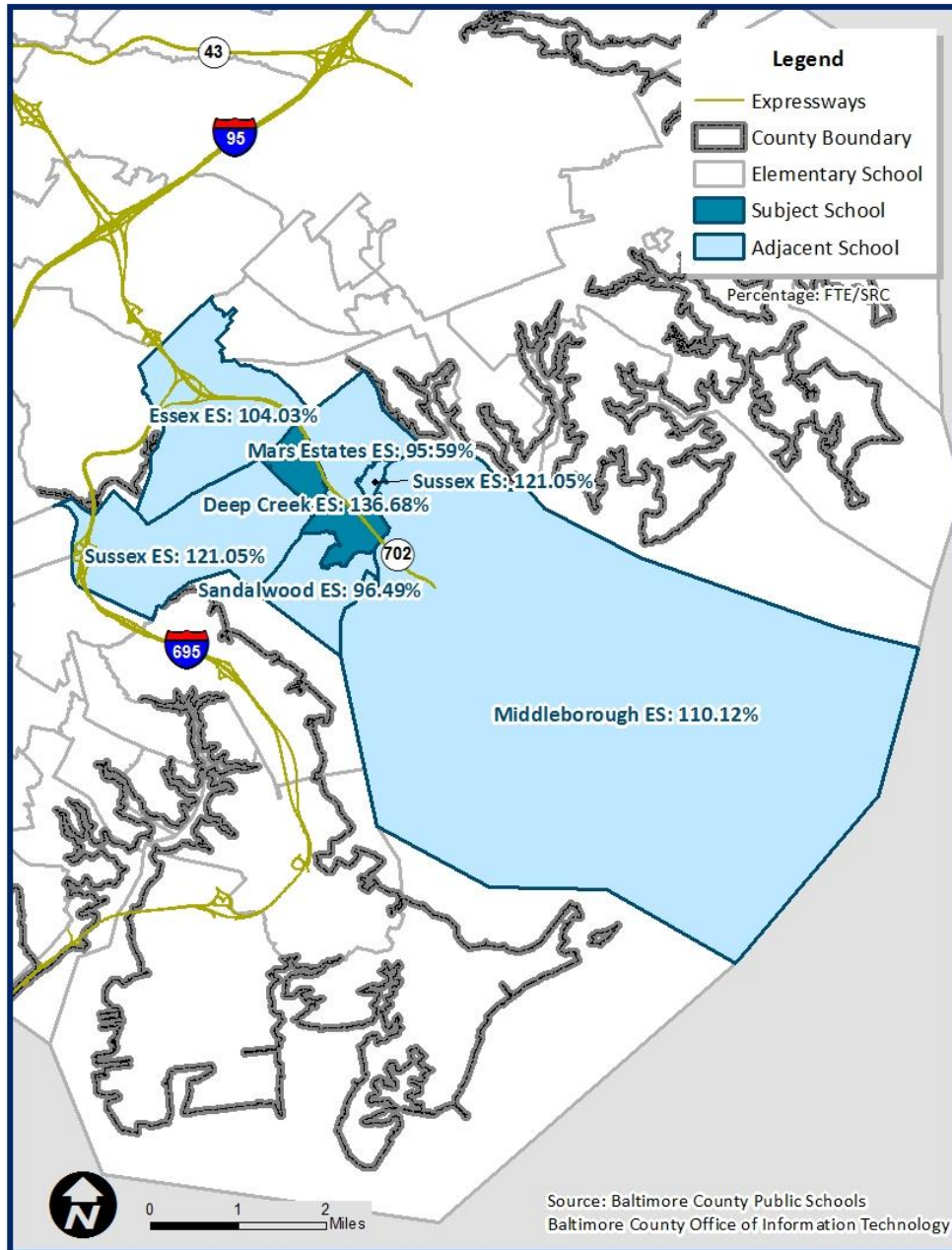
The Chapel Hill Elementary School's enrollment of September 30, 2017 is 815. The State Rated Capacity (SRC) for this school is 636. Based on these numbers, Chapel Hill Elementary School is 128.14% of SRC. A school impact analysis will be performed for each proposed development project to determine whether a school adjacent to Chapel Hill Elementary School (see map above) is overcrowded under Section 32-6-103(f) of the Baltimore County Code. The County's \$1.3 billion Schools for Our Future capital program as outlined on pages 39-40 will factor into the school impact analysis as required by Section 32-6-103(f).

Colgate Elementary School



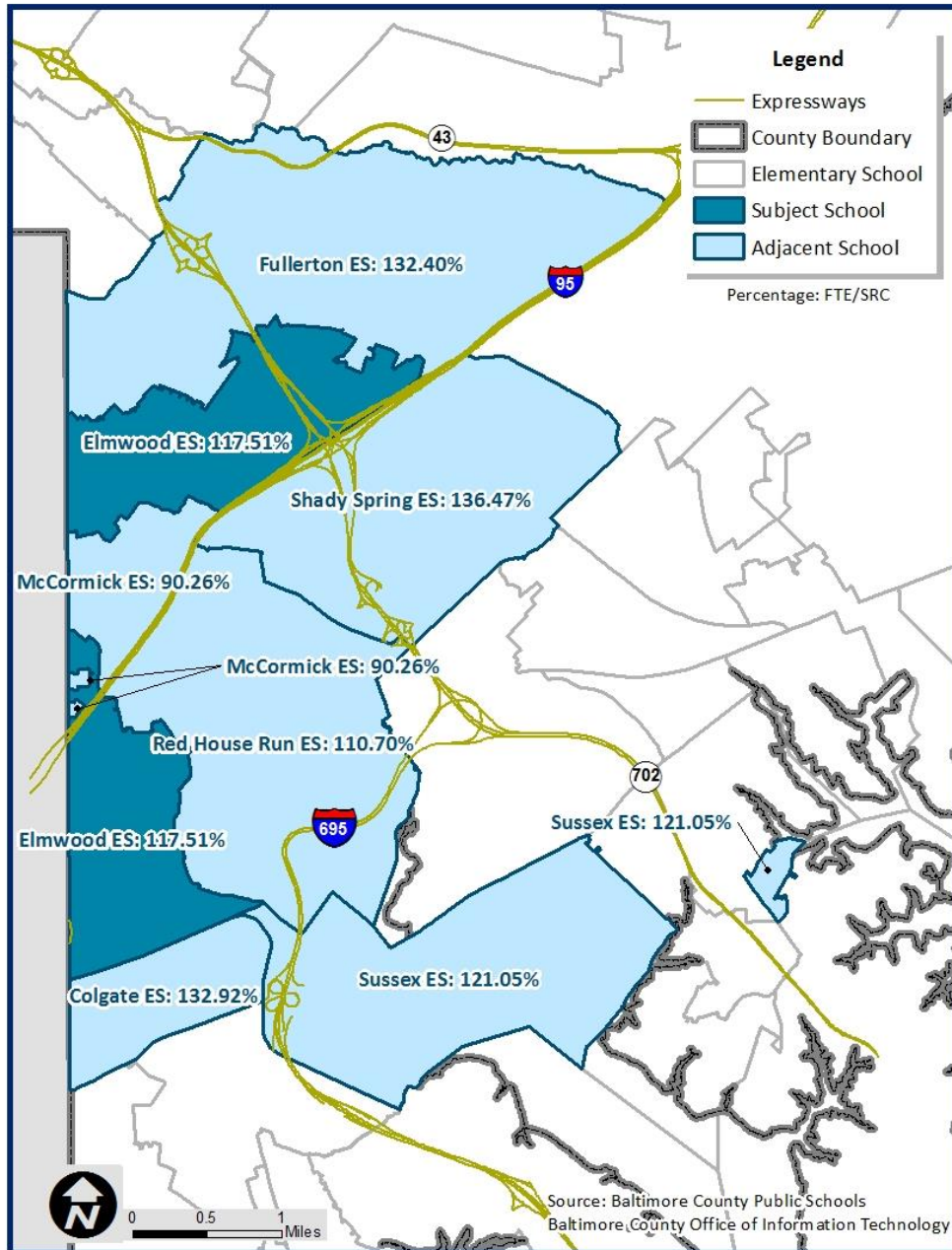
The Colgate Elementary School's enrollment of September 30, 2017 is 424. The State Rated Capacity (SRC) for this school is 319. Based on these numbers, Colgate Elementary School is 132.92% of SRC. A school impact analysis will be performed for each proposed development project to determine whether a school adjacent to Colgate Elementary School (see map above) is overcrowded under Section 32-6-103(f) of the Baltimore County Code. The County's \$1.3 billion Schools for Our Future capital program as outlined on pages 39-40 will factor into the school impact analysis as required by Section 32-6-103(f).

Deep Creek Elementary School



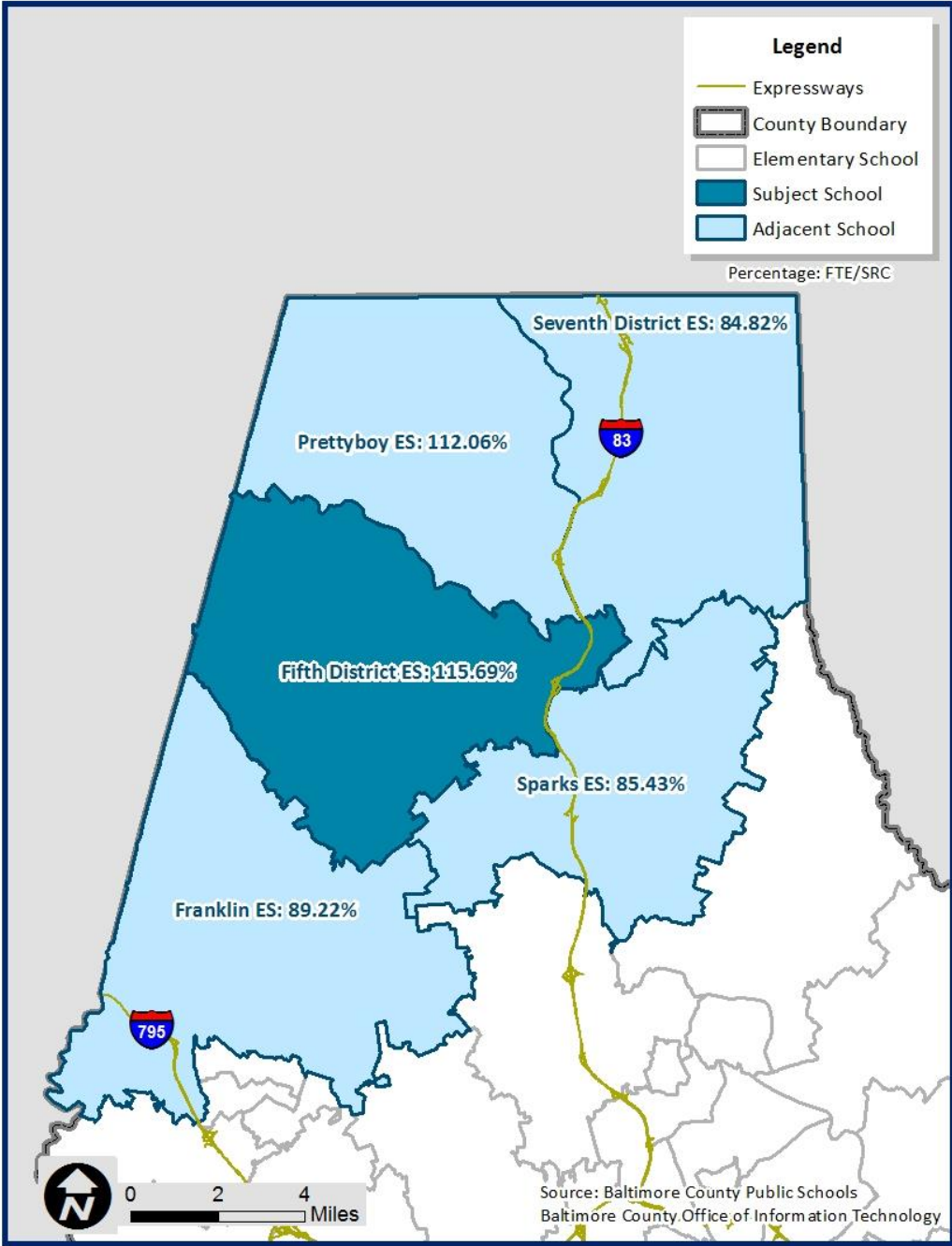
The Deep Creek Elementary School's enrollment of September 30, 2017 is 503. The State Rated Capacity (SRC) for this school is 368. Based on these numbers, Deep Creek Elementary School is 136.68% of SRC. A school impact analysis will be performed for each proposed development project to determine whether a school adjacent to Deep Creek Elementary School (see map above) is overcrowded under Section 32-6-103(f) of the Baltimore County Code. The County's \$1.3 billion Schools for Our Future capital program as outlined on pages 39-40 will factor into the school impact analysis as required by Section 32-6-103(f).

Elmwood Elementary School



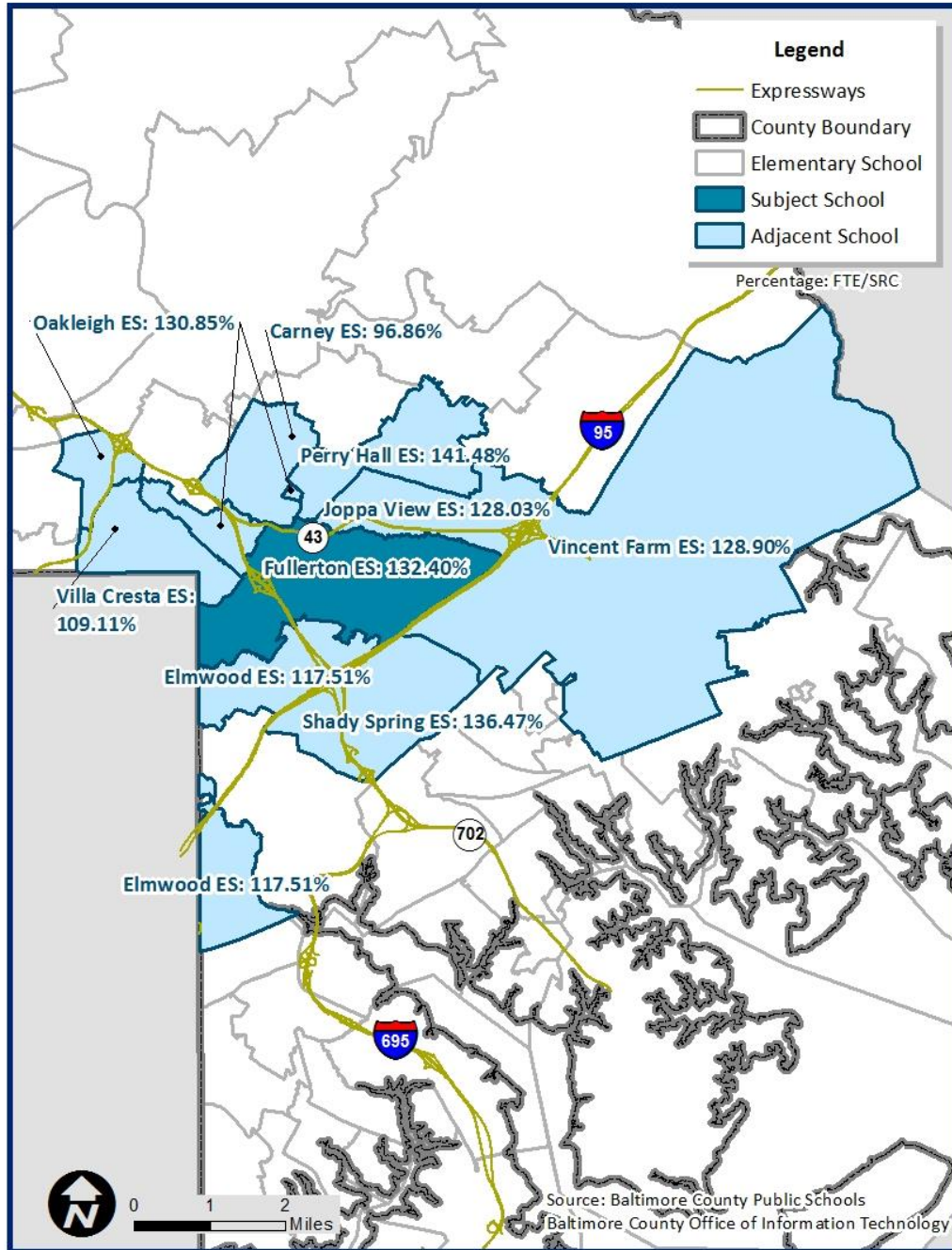
The Elmwood Elementary School's enrollment of September 30, 2017 is 557. The State Rated Capacity (SRC) for this school is 474. Based on these numbers, Elmwood Elementary School is 117.51% of SRC. A school impact analysis will be performed for each proposed development project to determine whether a school adjacent to Elmwood Elementary School (see map above) is overcrowded under Section 32-6-103(f) of the Baltimore County Code. The County's \$1.3 billion Schools for Our Future capital program as outlined on pages 39-40 will factor into the school impact analysis as required by Section 32-6-103(f).

Fifth District Elementary School



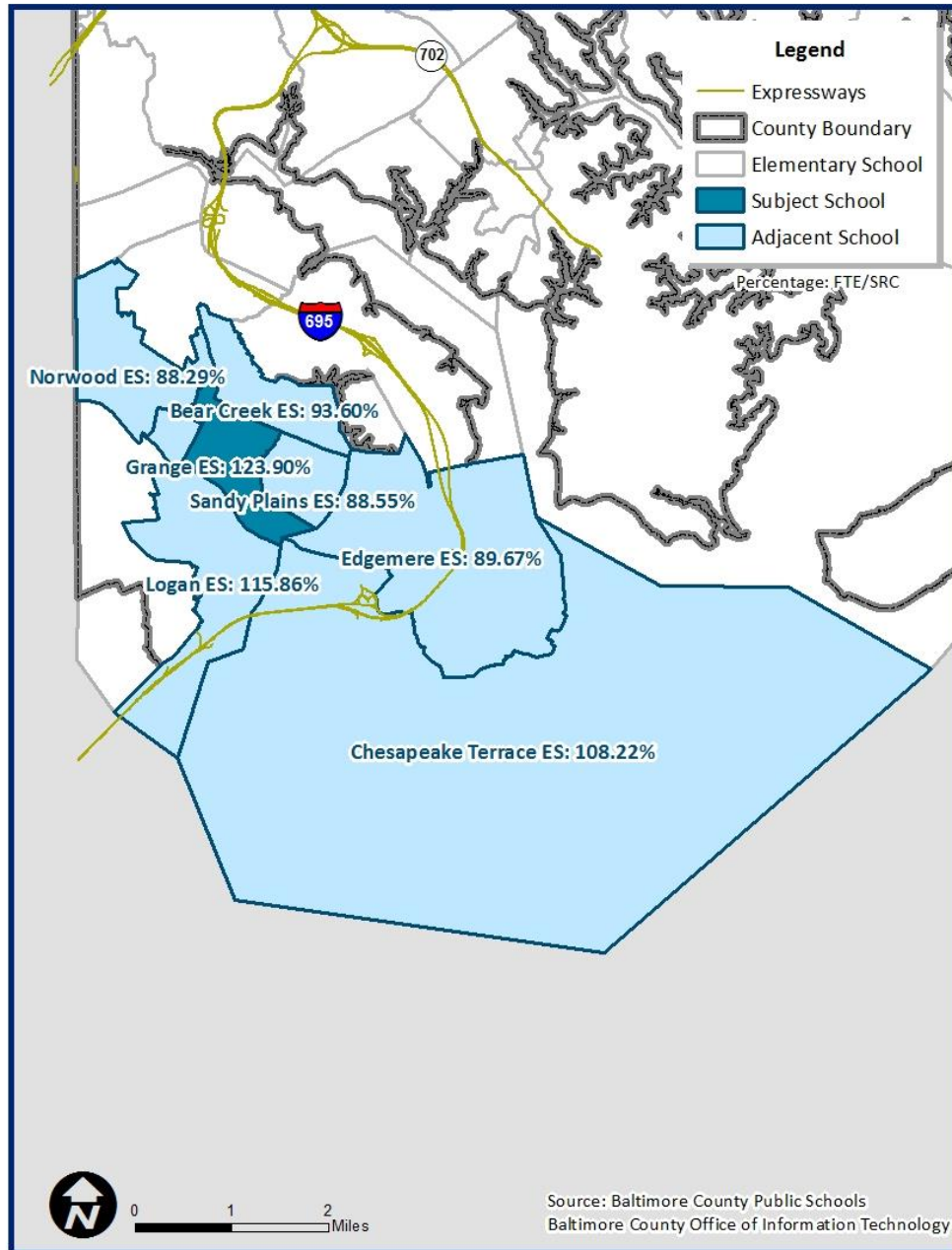
The Fifth District Elementary School’s enrollment of September 30, 2017 is 317. The State Rated Capacity (SRC) for this school is 274. Based on these numbers, Fifth District Elementary School is 115.69% of SRC. A school impact analysis will be performed for each proposed development project to determine whether a school adjacent to Fifth District Elementary School (see map above) is overcrowded under Section 32-6-103(f) of the Baltimore County Code. The County’s \$1.3 billion Schools for Our Future capital program as outlined on pages 39-40 will factor into the school impact analysis as required by Section 32-6-103(f).

Fullerton Elementary School



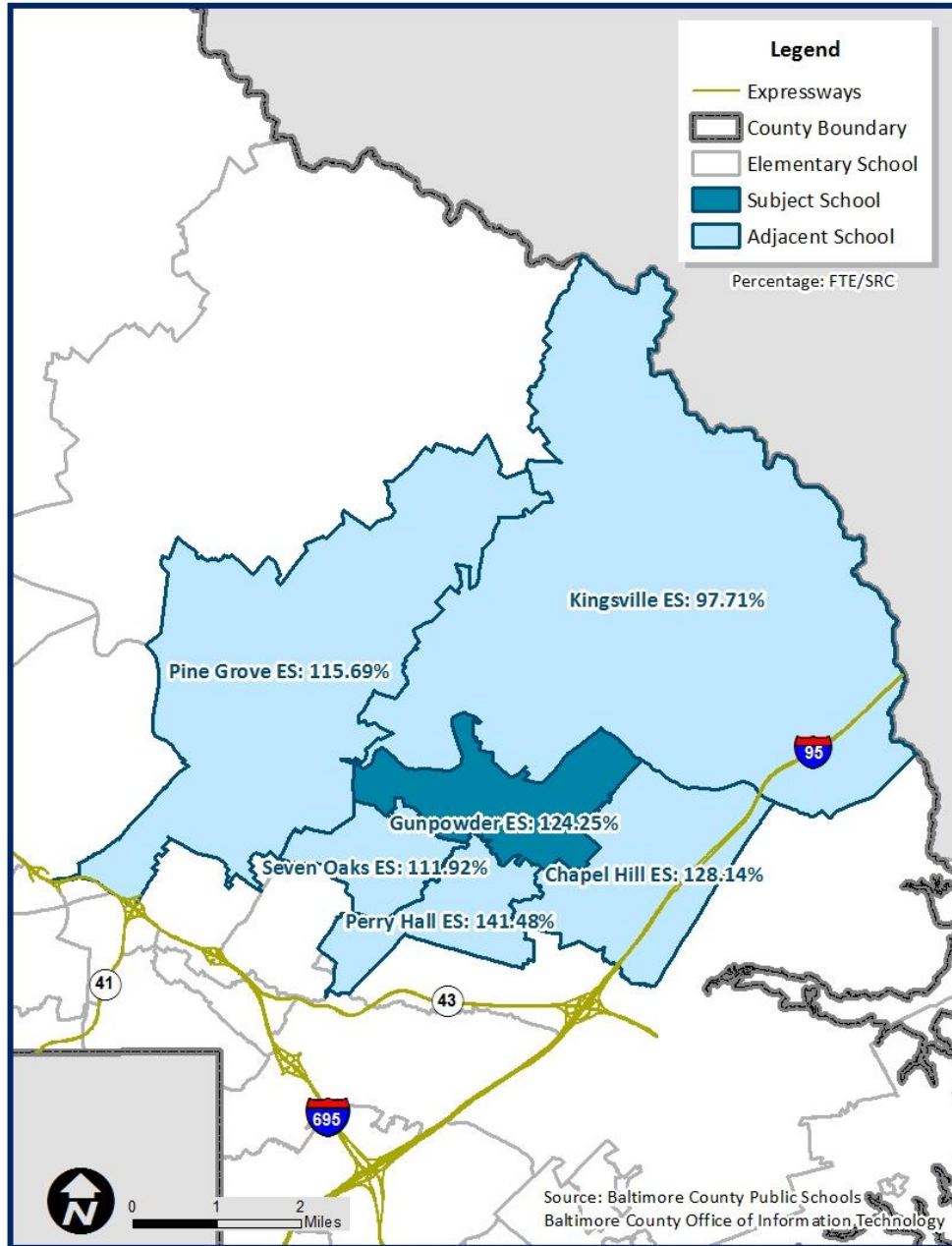
The Fullerton Elementary School’s enrollment of September 30, 2017 is 613. The State Rated Capacity (SRC) for this school is 463. Based on these numbers, Fullerton Elementary School is 132.40% of SRC. A school impact analysis will be performed for each proposed development project to determine whether a school adjacent to Fullerton Elementary School (see map above) is overcrowded under Section 32-6-103(f) of the Baltimore County Code. The County’s \$1.3 billion Schools for Our Future capital program as outlined on pages 39-40 will factor into the school impact analysis as required by Section 32-6-103(f).

Grange Elementary School



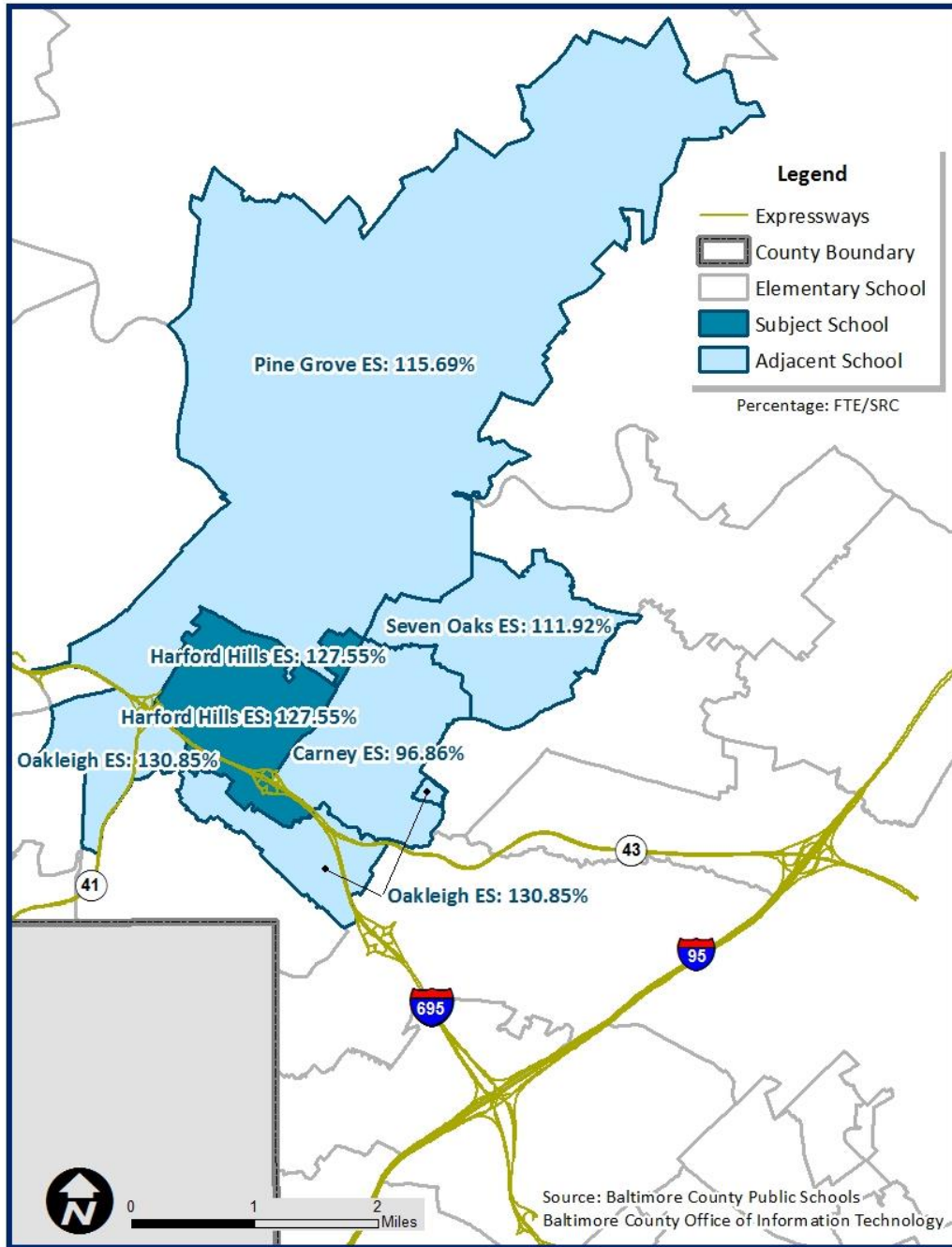
The Grange Elementary School's enrollment of September 30, 2017 is 477. The State Rated Capacity (SRC) for this school is 385. Based on these numbers, Grange Elementary School is 123.90% of SRC. A school impact analysis will be performed for each proposed development project to determine whether a school adjacent to Grange Elementary School (see map above) is overcrowded under Section 32-6-103(f) of the Baltimore County Code. The County's \$1.3 billion Schools for Our Future capital program as outlined on pages 39-40 will factor into the school impact analysis as required by Section 32-6-103(f).

Gunpowder Elementary School



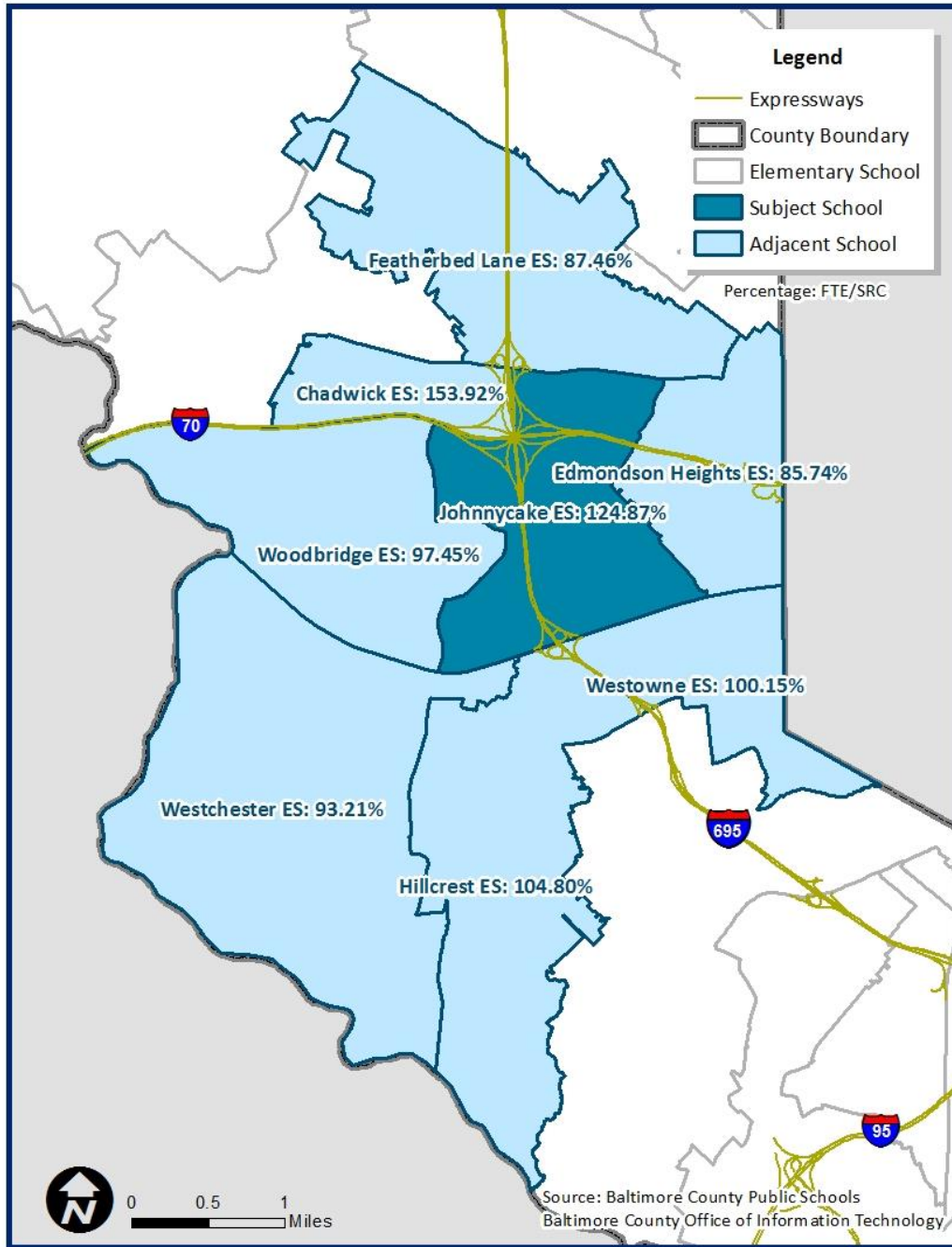
The Gunpowder Elementary School's enrollment of September 30, 2017 is 620. The State Rated Capacity (SRC) for this school is 499. Based on these numbers, Gunpowder Elementary School is 124.25% of SRC. A school impact analysis will be performed for each proposed development project to determine whether a school adjacent to Gunpowder Elementary School (see map above) is overcrowded under Section 32-6-103(f) of the Baltimore County Code. The County's \$1.3 billion Schools for Our Future capital program as outlined on pages 39-40 will factor into the school impact analysis as required by Section 32-6-103(f).

Harford Hills Elementary School



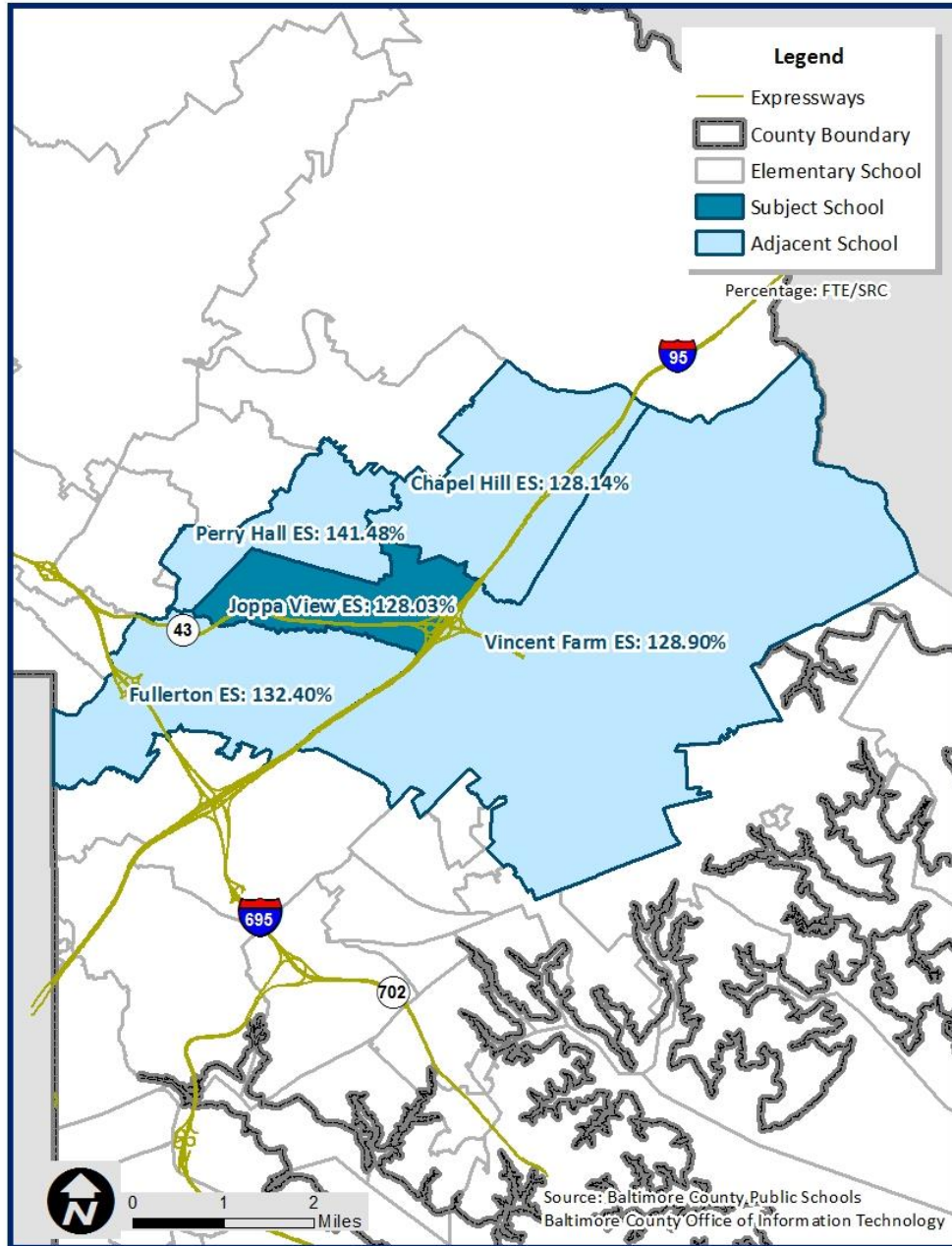
The Harford Hills Elementary School's enrollment of September 30, 2017 is 412. The State Rated Capacity (SRC) for this school is 323. Based on these numbers, Harford Hills Elementary School is 127.55% of SRC. A school impact analysis will be performed for each proposed development project to determine whether a school adjacent to Harford Hills Elementary School (see map above) is overcrowded under Section 32-6-103(f) of the Baltimore County Code. The County's \$1.3 billion Schools for Our Future capital program as outlined on pages 39-40 will factor into the school impact analysis as required by Section 32-6-103(f).

Johnnycake Elementary School



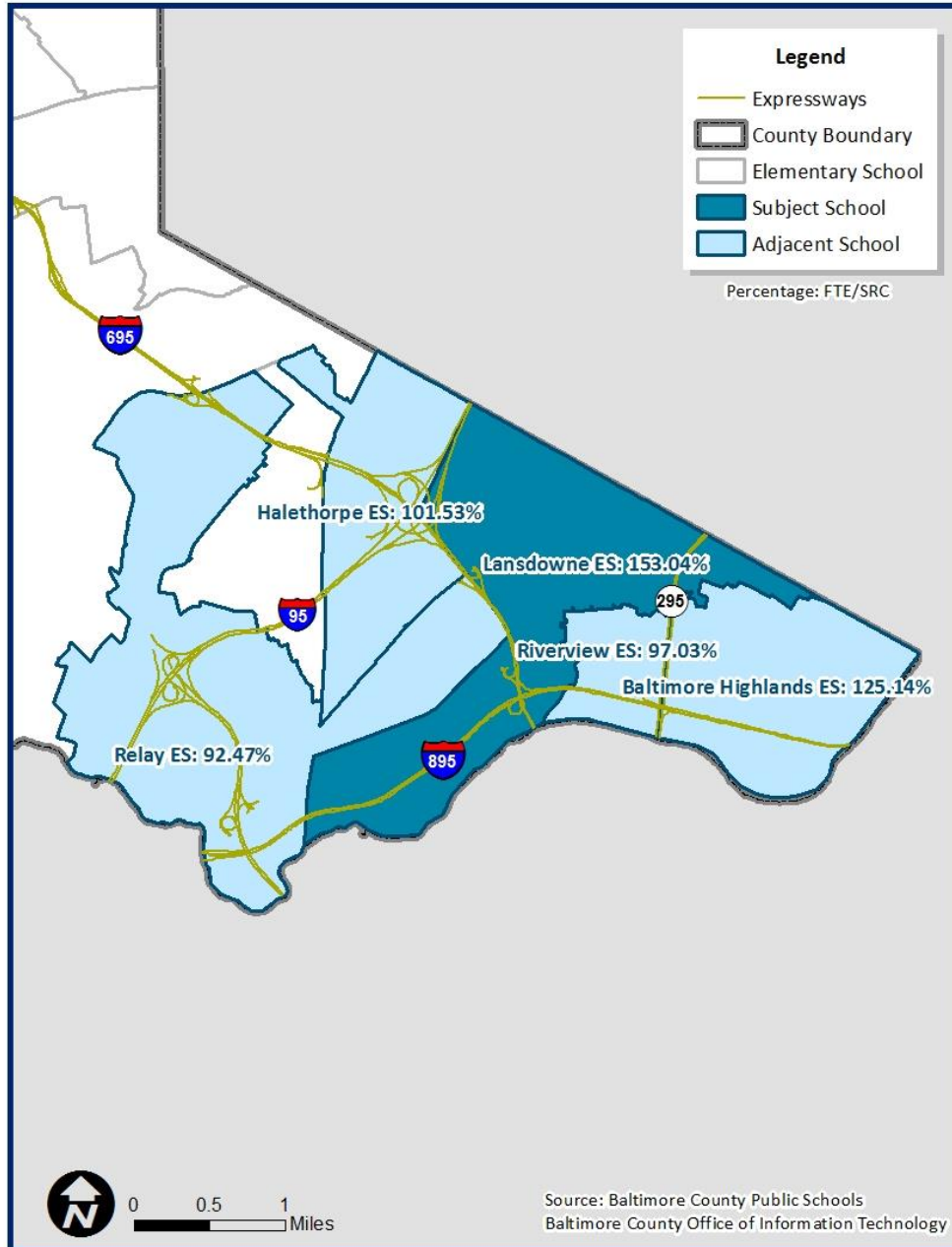
The Johnnycake Elementary School’s enrollment of September 30, 2017 is 698. The State Rated Capacity (SRC) for this school is 559. Based on these numbers, Johnnycake Elementary School is 124.87% of SRC. A school impact analysis will be performed for each proposed development project to determine whether a school adjacent to Johnnycake Elementary School (see map above) is overcrowded under Section 32-6-103(f) of the Baltimore County Code. The County’s \$1.3 billion Schools for Our Future capital program as outlined on pages 39-40 will factor into the school impact analysis as required by Section 32-6-103(f).

Joppa View Elementary School



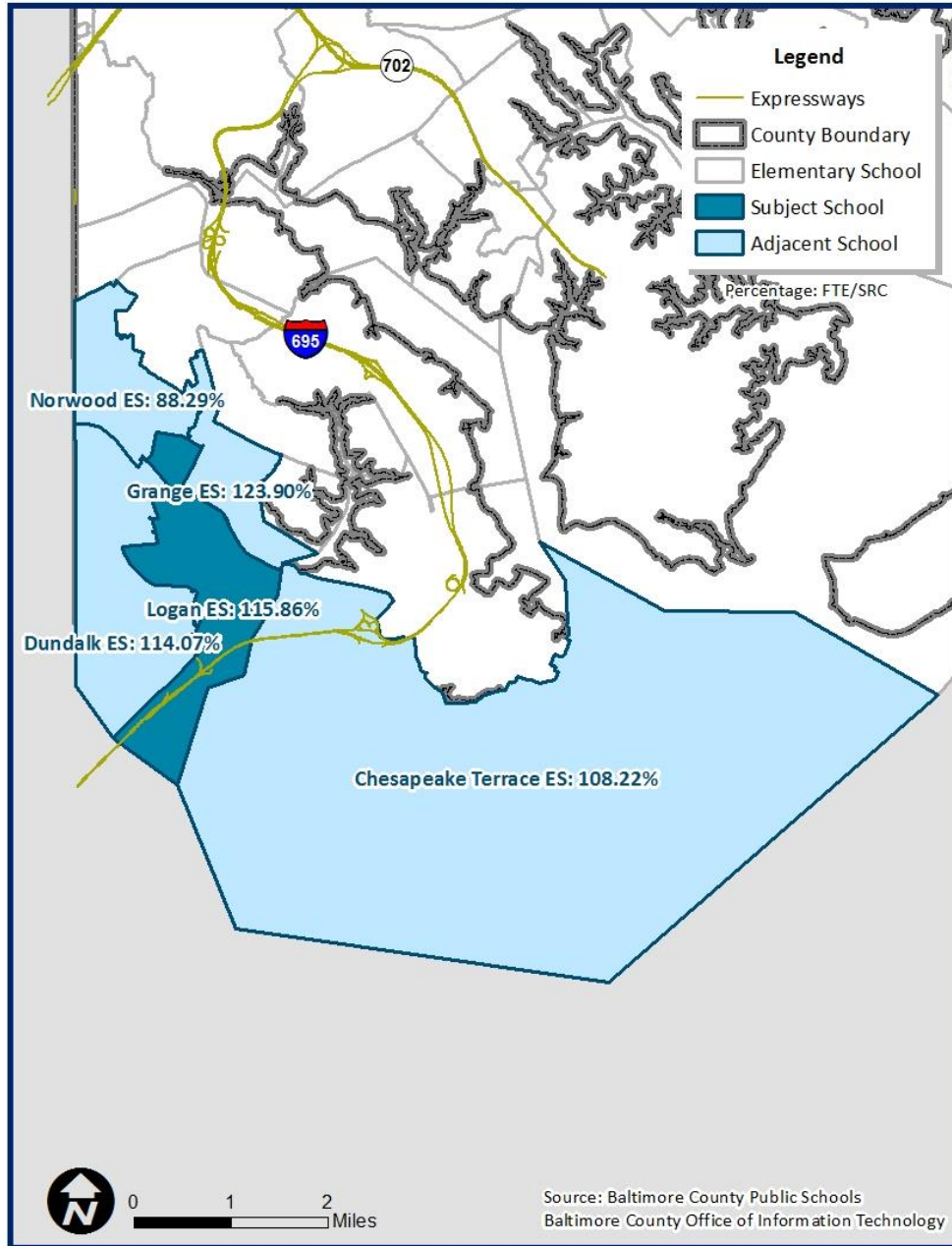
The Joppa View Elementary School's enrollment of September 30, 2017 is 813. The State Rated Capacity (SRC) for this school is 635. Based on these numbers, Joppa View Elementary School is 128.03% of SRC. A school impact analysis will be performed for each proposed development project to determine whether a school adjacent to Joppa View Elementary School (see map above) is overcrowded under Section 32-6-103(f) of the Baltimore County Code. The County's \$1.3 billion Schools for Our Future capital program as outlined on pages 39-40 will factor into the school impact analysis as required by Section 32-6-103(f).

Lansdowne Elementary School



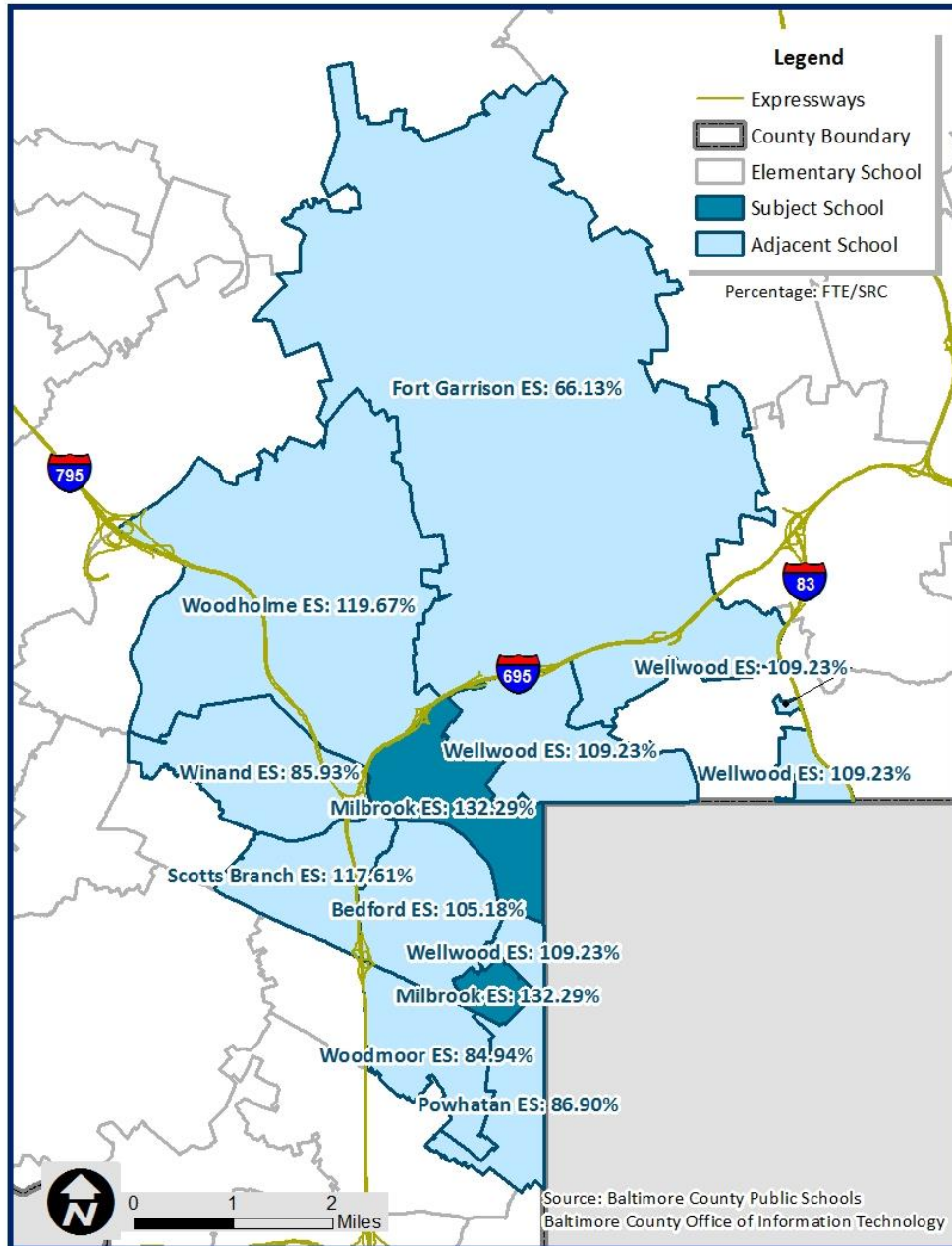
The Lansdowne Elementary School's enrollment of September 30, 2017 is 479. The State Rated Capacity (SRC) for this school is 313. Based on these numbers, Lansdowne Elementary School is 153.04% of SRC. A school impact analysis will be performed for each proposed development project to determine whether a school adjacent to Lansdowne Elementary School (see map above) is overcrowded under Section 32-6-103(f) of the Baltimore County Code. The County's \$1.3 billion Schools for Our Future capital program as outlined on pages 39-40 will factor into the school impact analysis as required by Section 32-6-103(f).

Logan Elementary School



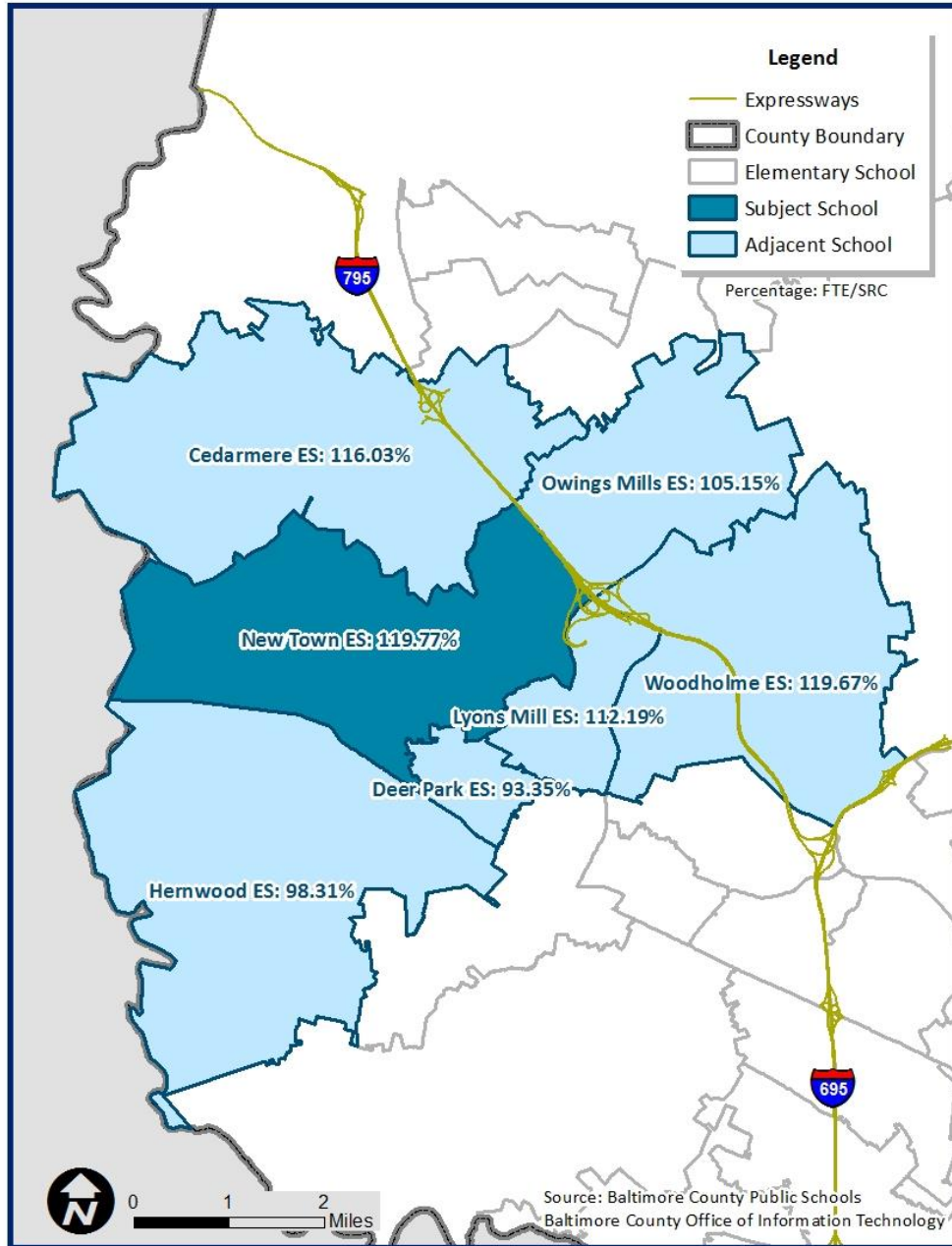
The Logan Elementary School's enrollment of September 30, 2017 is 599. The State Rated Capacity (SRC) for this school is 517. Based on these numbers, Logan Elementary School is 115.86% of SRC. A school impact analysis will be performed for each proposed development project to determine whether a school adjacent to Logan Elementary School (see map above) is overcrowded under Section 32-6-103(f) of the Baltimore County Code. The County's \$1.3 billion Schools for Our Future capital program as outlined on pages 39-40 will factor into the school impact analysis as required by Section 32-6-103(f).

Milbrook Elementary School



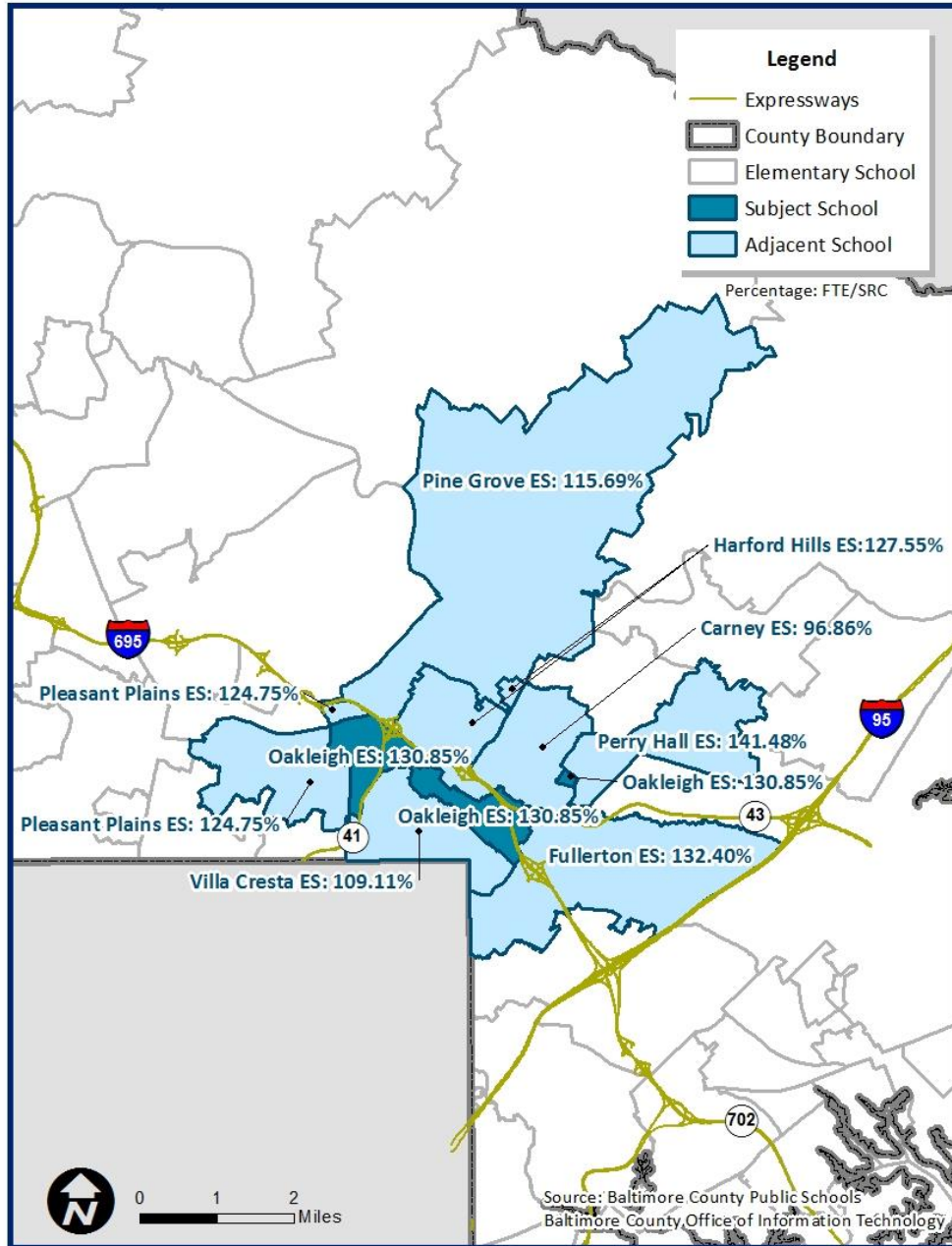
The Milbrook Elementary School's enrollment of September 30, 2017 is 422. The State Rated Capacity (SRC) for this school is 319. Based on these numbers, Milbrook Elementary School is 132.29% of SRC. A school impact analysis will be performed for each proposed development project to determine whether a school adjacent to Milbrook Elementary School (see map above) is overcrowded under Section 32-6-103(f) of the Baltimore County Code. The County's \$1.3 billion Schools for Our Future capital program as outlined on pages 39-40 will factor into the school impact analysis as required by Section 32-6-103(f).

New Town Elementary School



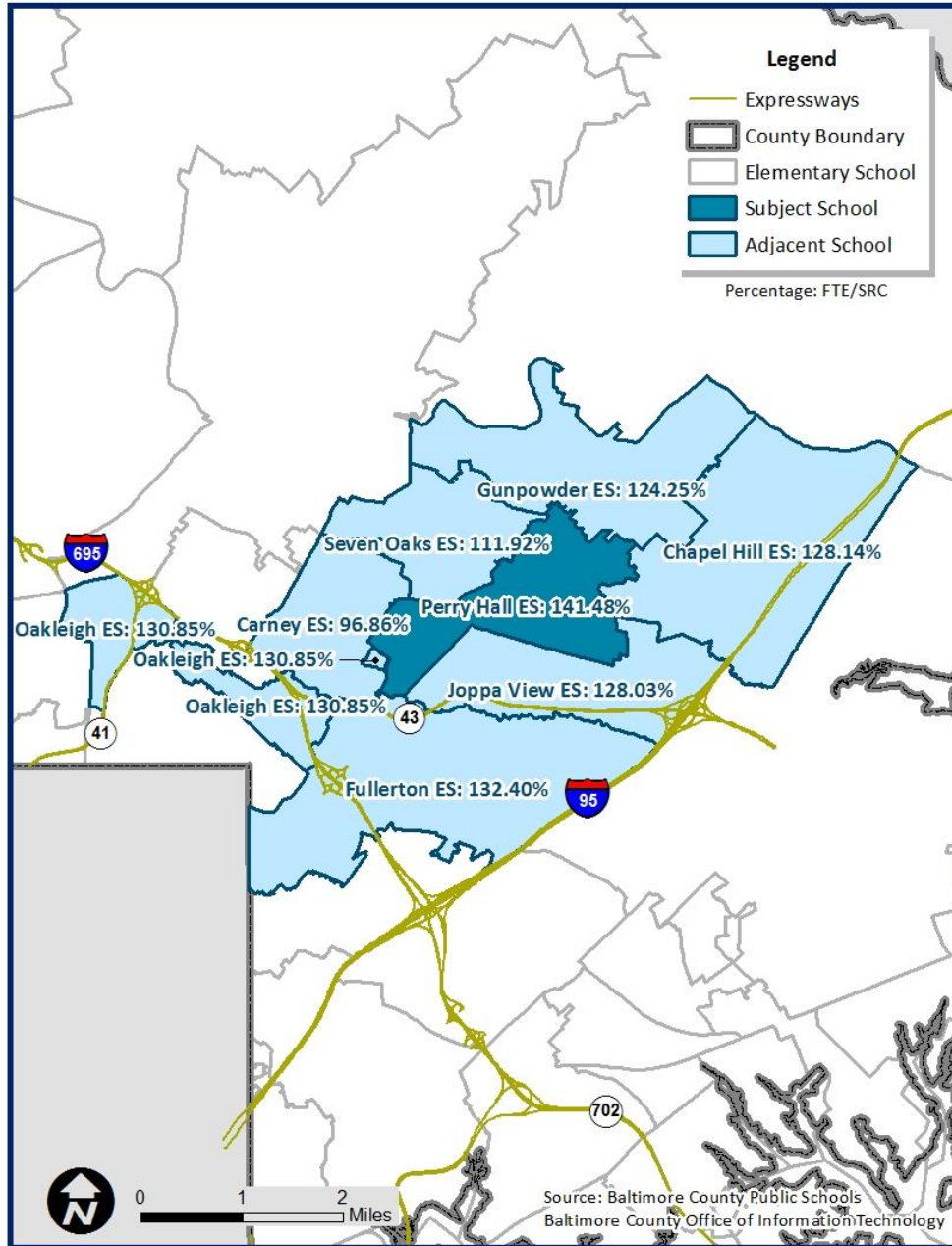
The New Town Elementary School's enrollment of September 30, 2017 is 842. The State Rated Capacity (SRC) for this school is 703. Based on these numbers, New Town Elementary School is 119.77% of SRC. A school impact analysis will be performed for each proposed development project to determine whether a school adjacent to New Town Elementary School (see map above) is overcrowded under Section 32-6-103(f) of the Baltimore County Code. The County's \$1.3 billion Schools for Our Future capital program as outlined on pages 39-40 will factor into the school impact analysis as required by Section 32-6-103(f).

Oakleigh Elementary School



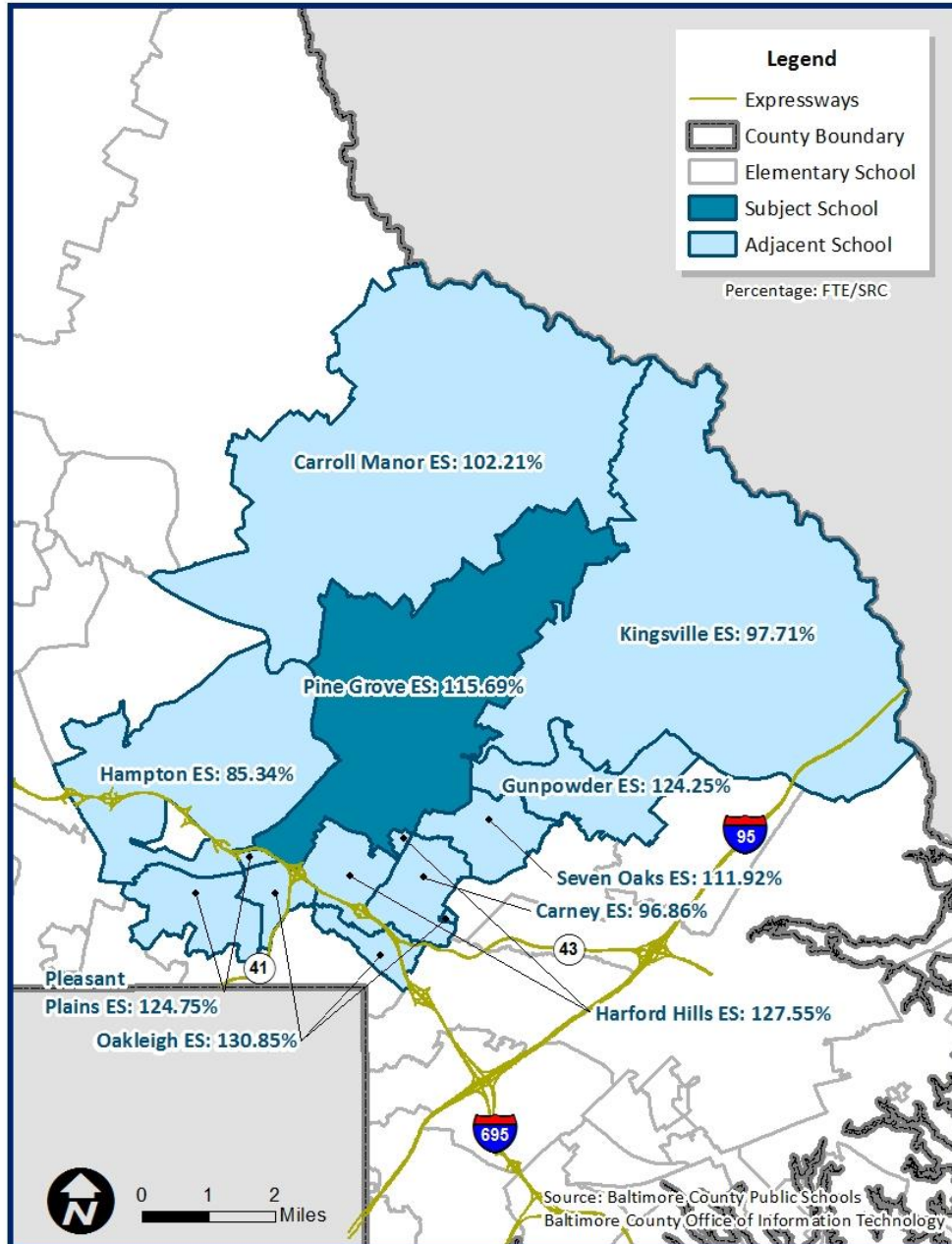
The Oakleigh Elementary School’s enrollment of September 30, 2017 is 649. The State Rated Capacity (SRC) for this school is 496. Based on these numbers, Oakleigh Elementary School is 130.85% of SRC. A school impact analysis will be performed for each proposed development project to determine whether a school adjacent to Oakleigh Elementary School (see map above) is overcrowded under Section 32-6-103(f) of the Baltimore County Code. The County’s \$1.3 billion Schools for Our Future capital program as outlined on pages 39-40 will factor into the school impact analysis as required by Section 32-6-103(f).

Perry Hall Elementary School



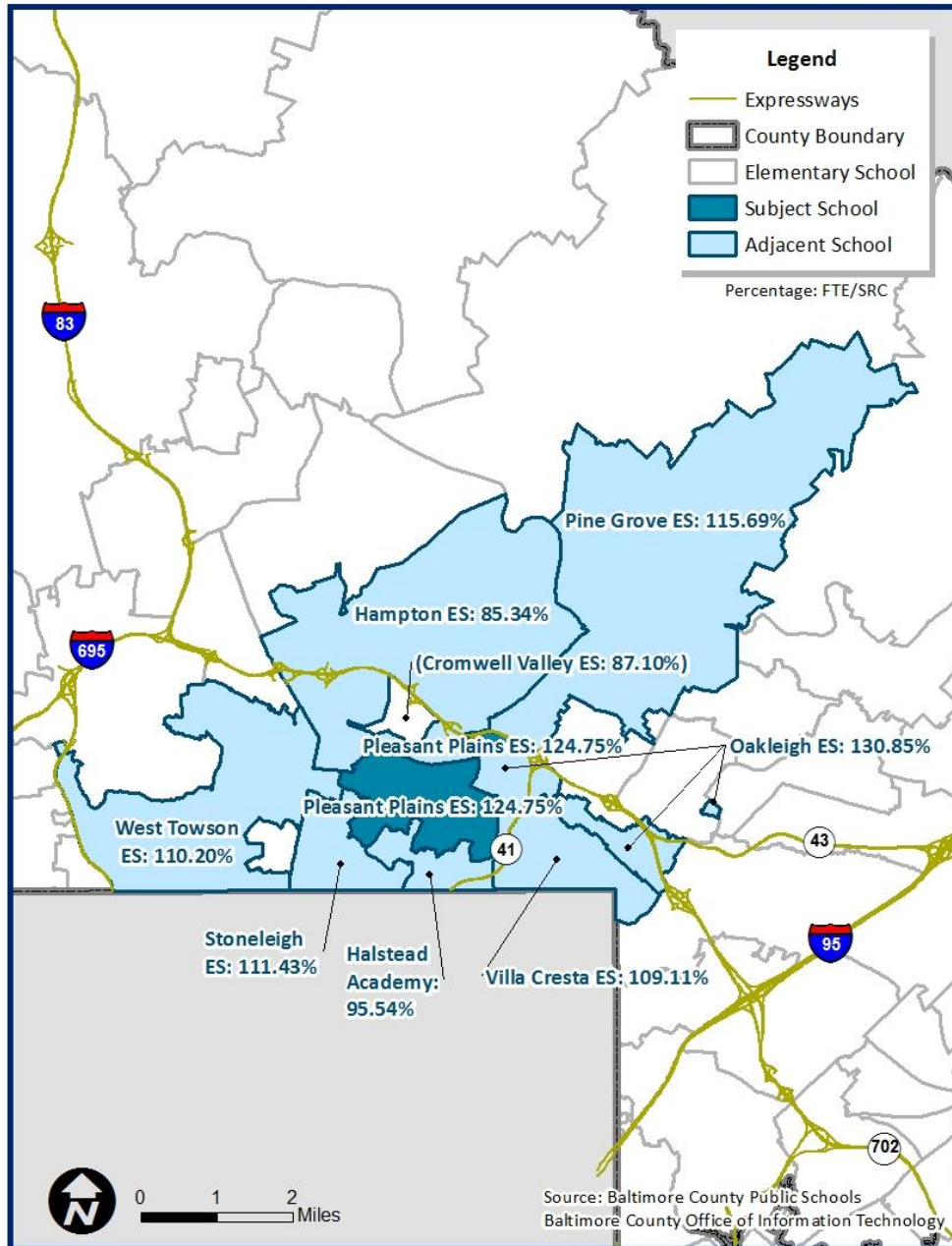
The Perry Hall Elementary School’s enrollment of September 30, 2017 is 747. The State Rated Capacity (SRC) for this school is 528. Based on these numbers, Perry Hall Elementary School is 141.48% of SRC. A school impact analysis will be performed for each proposed development project to determine whether a school adjacent to Perry Hall Elementary School (see map above) is overcrowded under Section 32-6-103(f) of the Baltimore County Code. The County’s \$1.3 billion Schools for Our Future capital program as outlined on pages 39-40 will factor into the school impact analysis as required by Section 32-6-103(f).

Pine Grove Elementary School



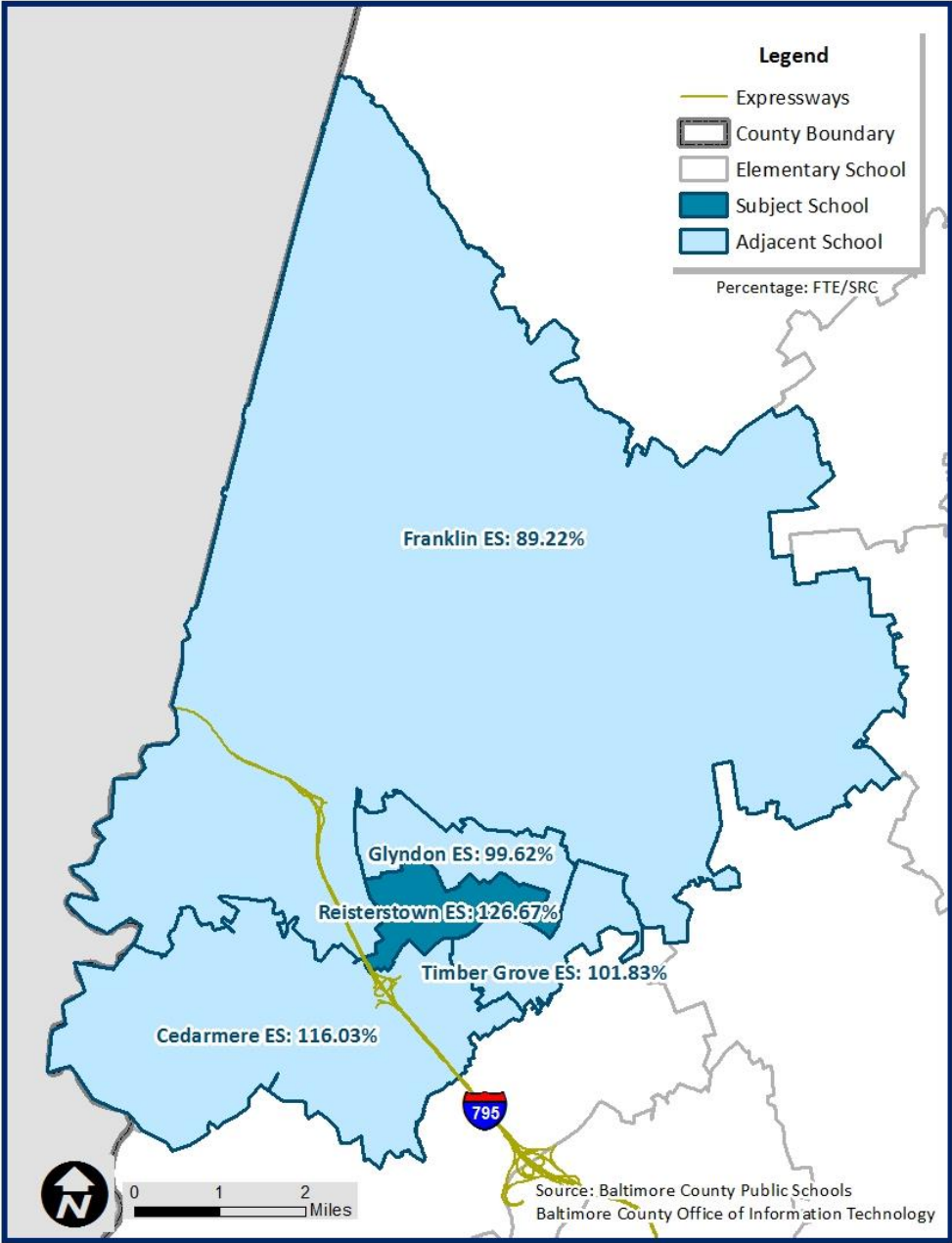
The Pine Grove Elementary School's enrollment of September 30, 2017 is 575. The State Rated Capacity (SRC) for this school is 497. Based on these numbers, Pine Grove Elementary School is 115.69% of SRC. A school impact analysis will be performed for each proposed development project to determine whether a school adjacent to Pine Grove Elementary School (see map above) is overcrowded under Section 32-6-103(f) of the Baltimore County Code. The County's \$1.3 billion Schools for Our Future capital program as outlined on pages 39-40 will factor into the school impact analysis as required by Section 32-6-103(f).

Pleasant Plains Elementary School



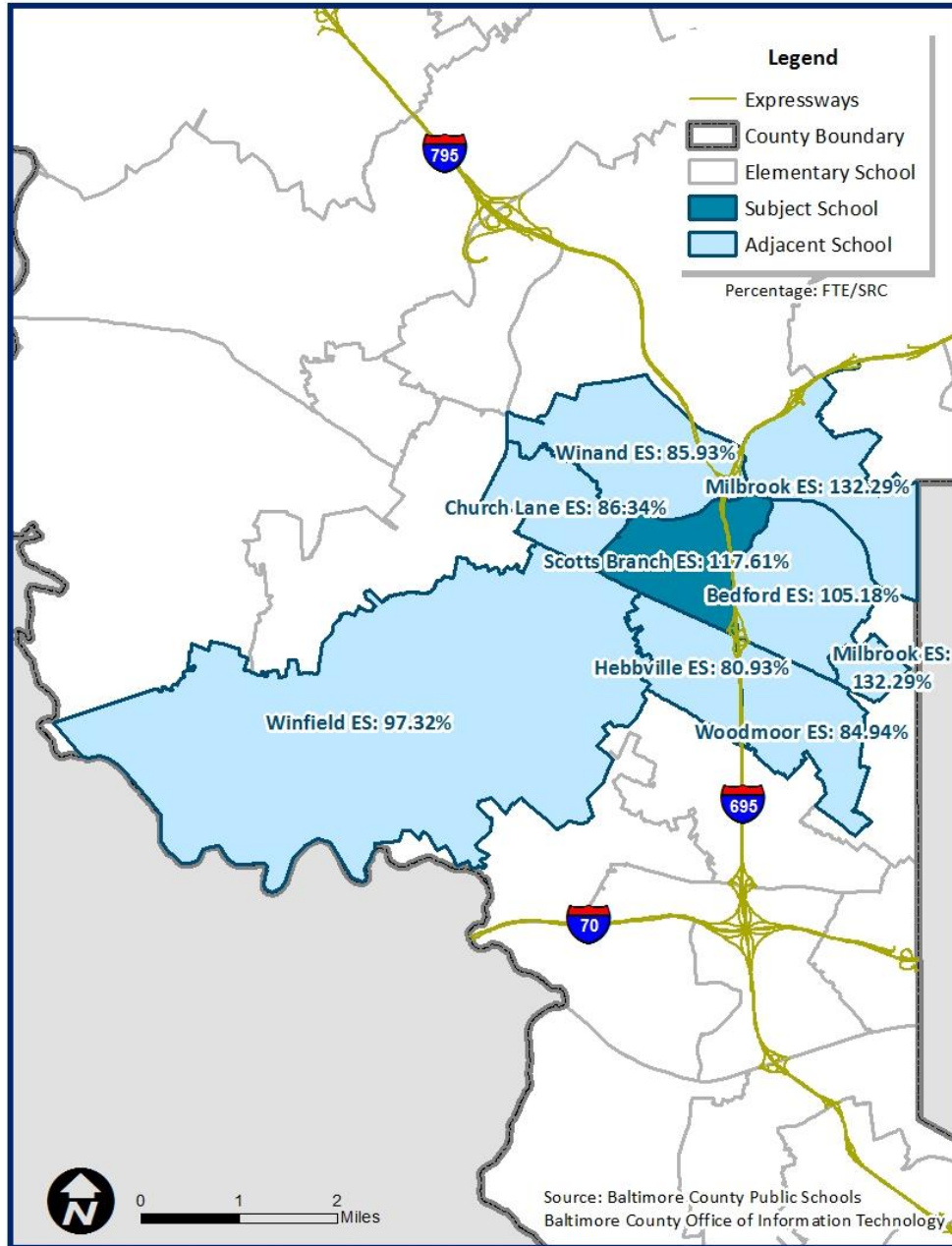
The Pleasant Plains Elementary School’s enrollment of September 30, 2017 is 635. The State Rated Capacity (SRC) for this school is 509. Based on these numbers, Pleasant Plains Elementary School is 124.75% of SRC. A school impact analysis will be performed for each proposed development project to determine whether a school adjacent to Pleasant Plains Elementary School (see map above) is overcrowded under Section 32-6-103(f) of the Baltimore County Code. The County’s \$1.3 billion Schools for Our Future capital program as outlined on pages 39-40 will factor into the school impact analysis as required by Section 32-6-103(f).

Reisterstown Elementary School



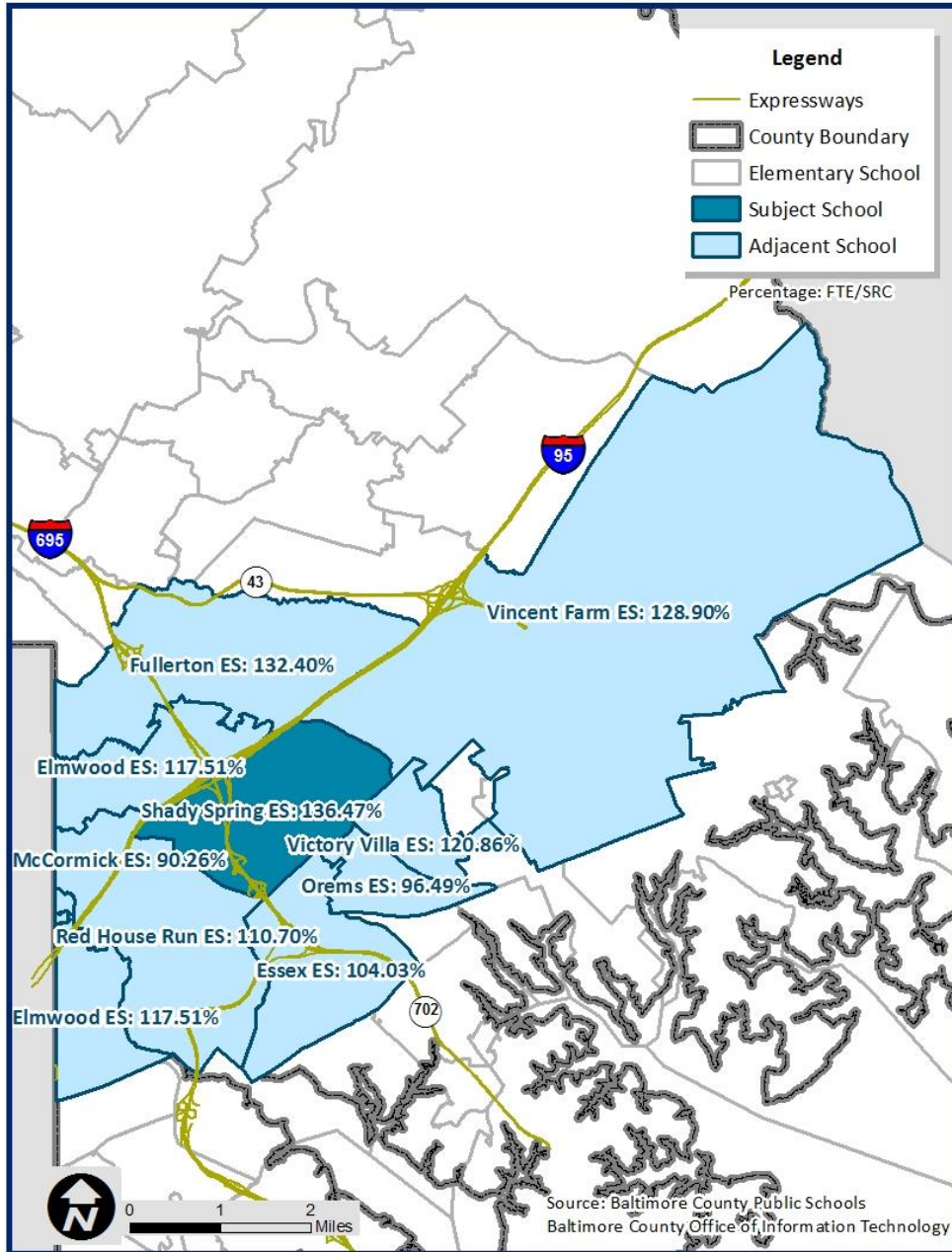
The Reisterstown Elementary School’s enrollment of September 30, 2017 is 570. The State Rated Capacity (SRC) for this school is 450. Based on these numbers, Reisterstown Elementary School is 126.67% of SRC. A school impact analysis will be performed for each proposed development project to determine whether a school adjacent to Reisterstown Elementary School (see map above) is overcrowded under Section 32-6-103(f) of the Baltimore County Code. The County’s \$1.3 billion Schools for Our Future capital program as outlined on pages 39-40 will factor into the school impact analysis as required by Section 32-6-103(f).

Scotts Branch Elementary School



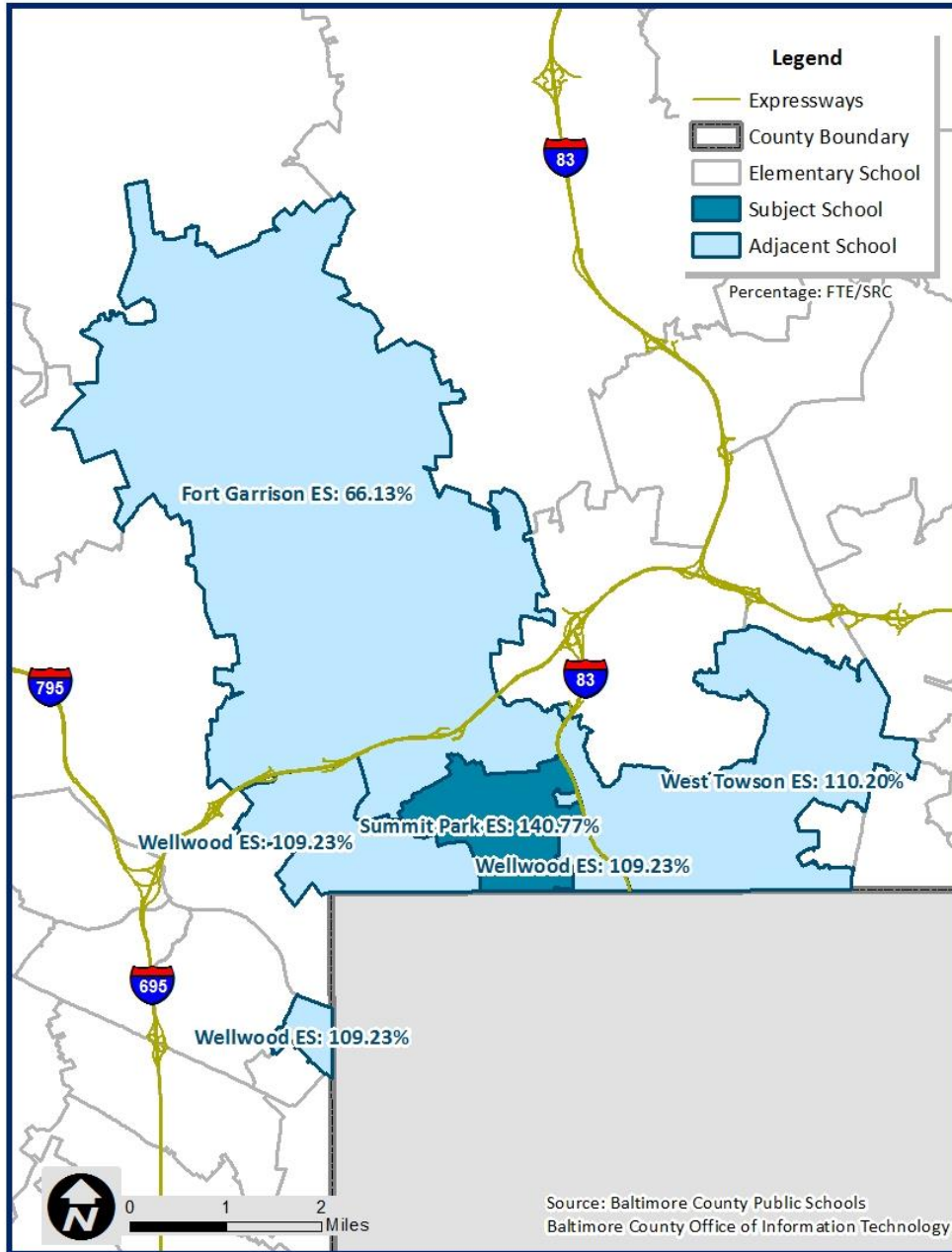
The Scotts Branch Elementary School’s enrollment of September 30, 2017 is 601. The State Rated Capacity (SRC) for this school is 511. Based on these numbers, Scotts Branch Elementary School is 117.61% of SRC. A school impact analysis will be performed for each proposed development project to determine whether a school adjacent to Scotts Branch Elementary School (see map above) is overcrowded under Section 32-6-103(f) of the Baltimore County Code. The County’s \$1.3 billion Schools for Our Future capital program as outlined on pages 39-40 will factor into the school impact analysis as required by Section 32-6-103(f).

Shady Spring Elementary School



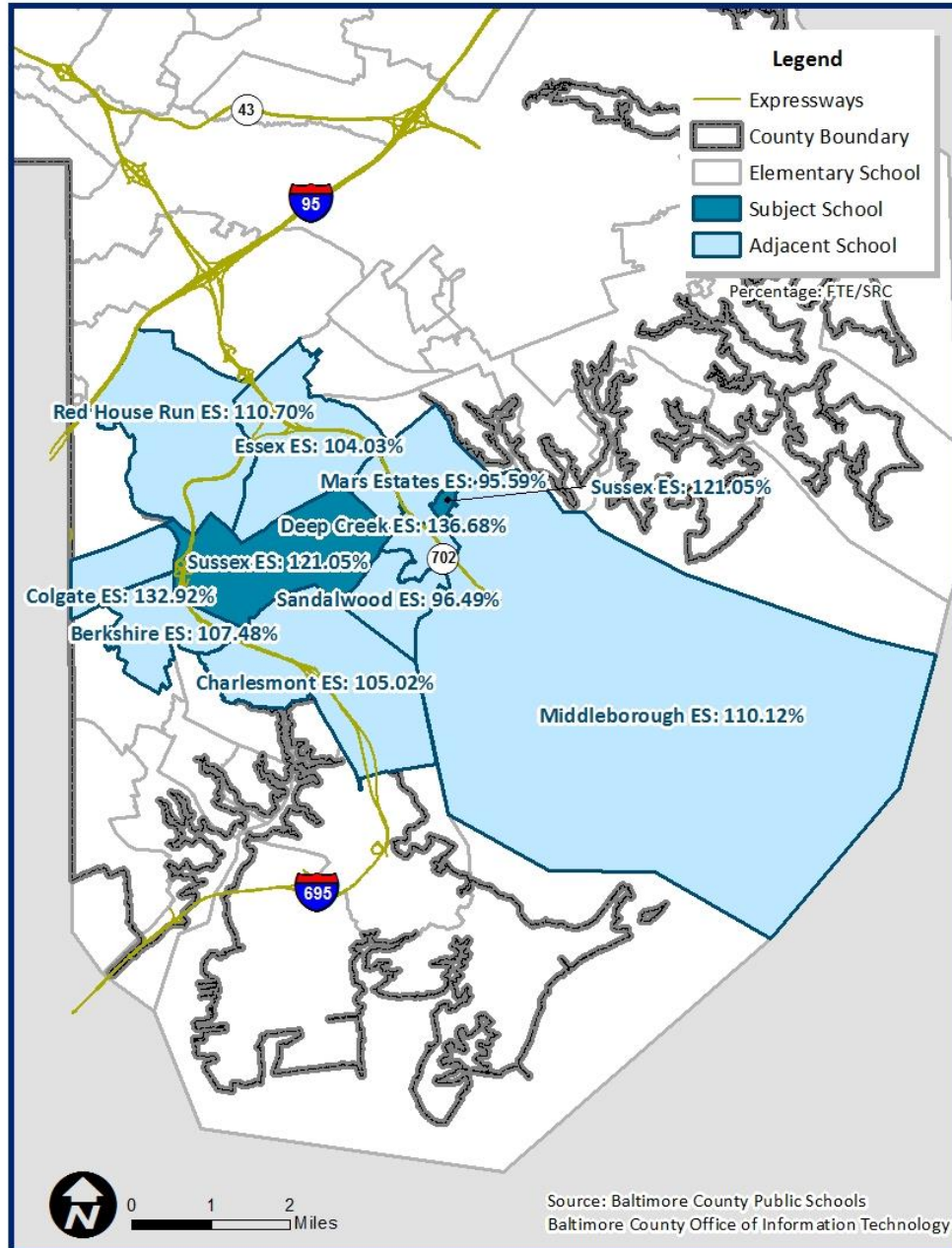
The Shady Spring Elementary School’s enrollment of September 30, 2017 is 681. The State Rated Capacity (SRC) for this school is 499. Based on these numbers, Shady Spring Elementary School is 136.47% of SRC. A school impact analysis will be performed for each proposed development project to determine whether a school adjacent to Shady Spring Elementary School (see map above) is overcrowded under Section 32-6-103(f) of the Baltimore County Code. The County’s \$1.3 billion Schools for Our Future capital program as outlined on pages 39-40 will factor into the school impact analysis as required by Section 32-6-103(f).

Summit Park Elementary School



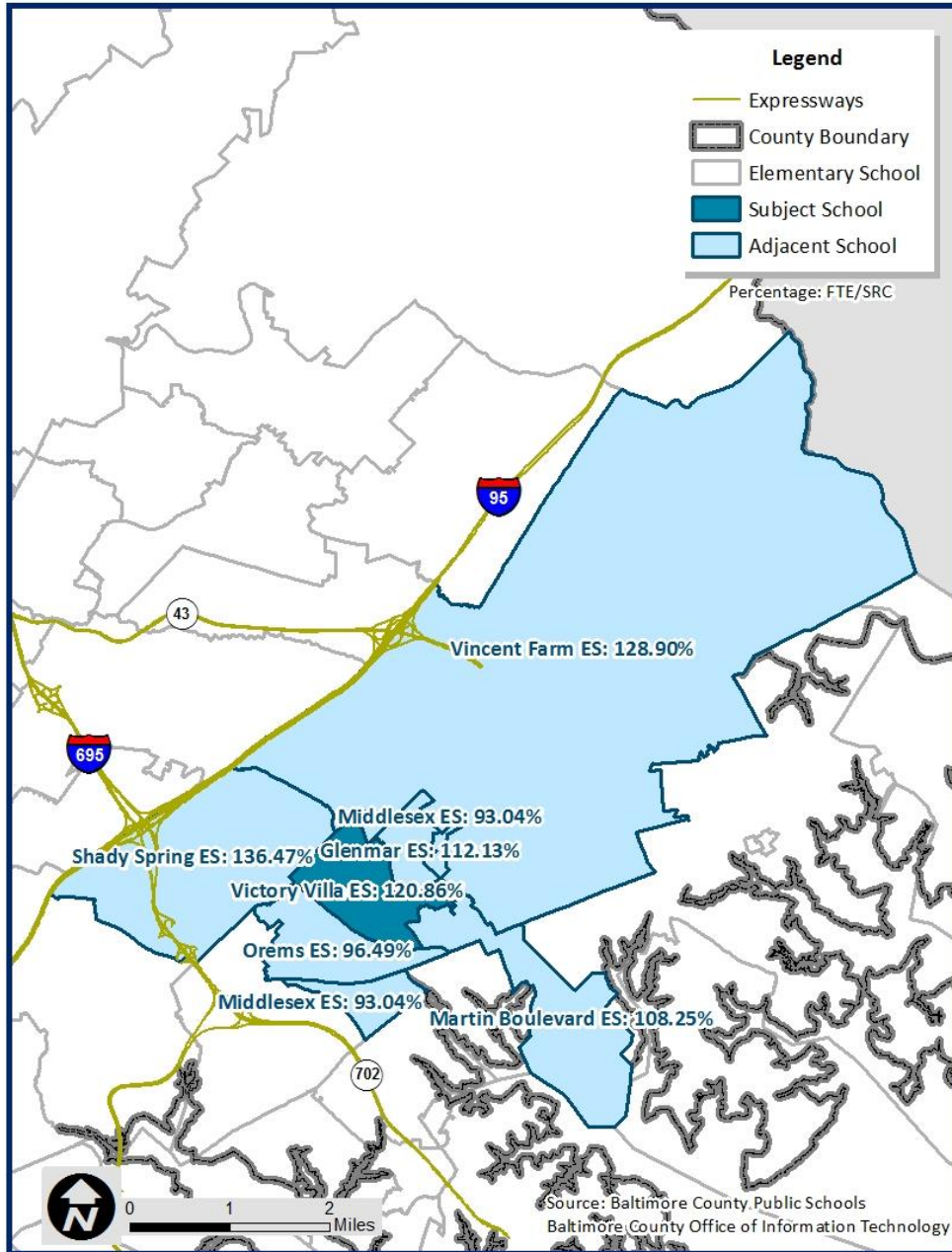
The Summit Park Elementary School's enrollment of September 30, 2017 is 473. The State Rated Capacity (SRC) for this school is 336. Based on these numbers, Summit Park Elementary School is 140.77% of SRC. A school impact analysis will be performed for each proposed development project to determine whether a school adjacent to Summit Park Elementary School (see map above) is overcrowded under Section 32-6-103(f) of the Baltimore County Code. The County's \$1.3 billion Schools for Our Future capital program as outlined on pages 39-40 will factor into the school impact analysis as required by Section 32-6-103(f).

Sussex Elementary School



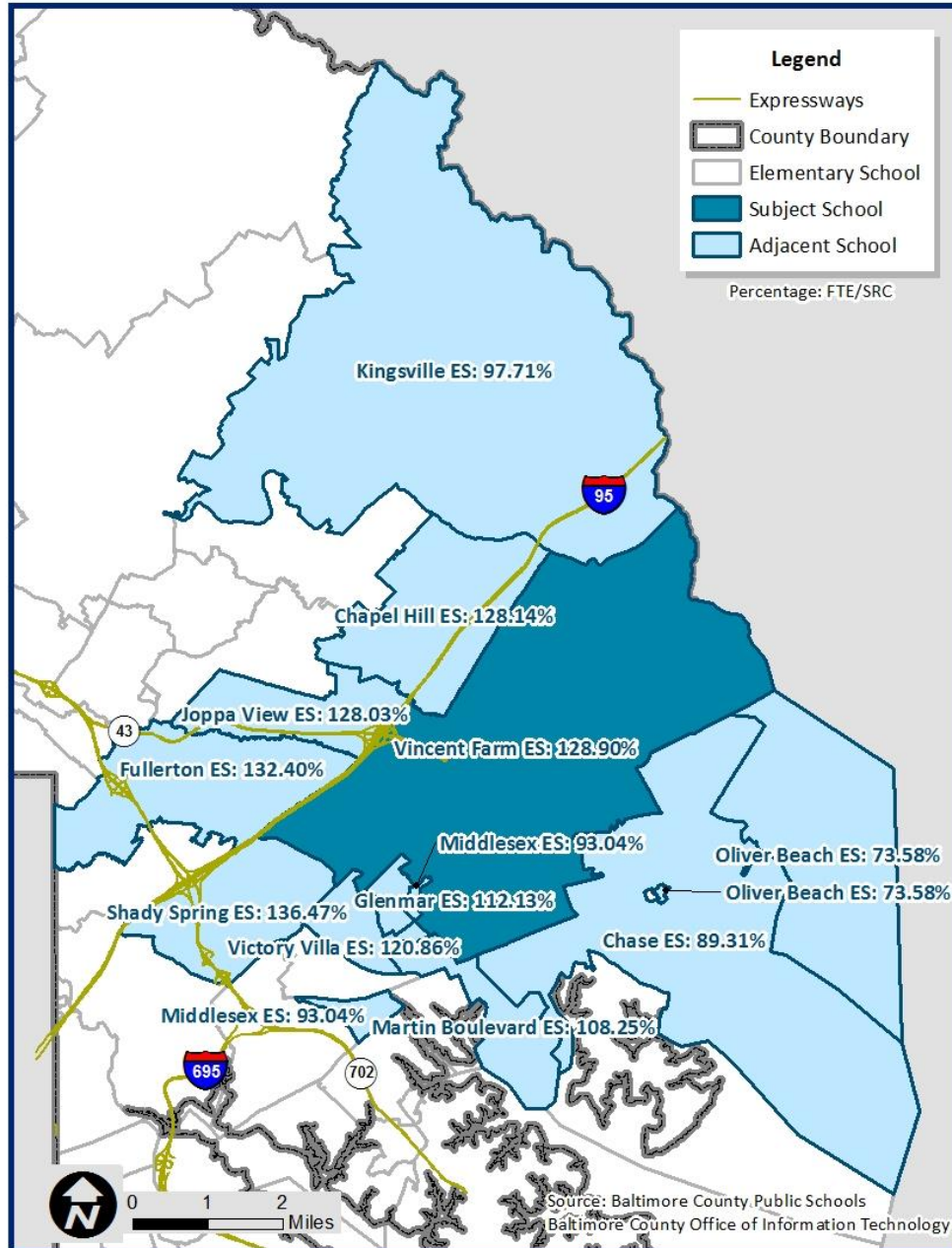
The Sussex Elementary School’s enrollment of September 30, 2017 is 460. The State Rated Capacity (SRC) for this school is 380. Based on these numbers, Sussex Elementary School is 121.05% of SRC. A school impact analysis will be performed for each proposed development project to determine whether a school adjacent to Sussex Elementary School (see map above) is overcrowded under Section 32-6-103(f) of the Baltimore County Code. The County’s \$1.3 billion Schools for Our Future capital program as outlined on pages 39-40 will factor into the school impact analysis as required by Section 32-6-103(f).

Victory Villa Elementary School



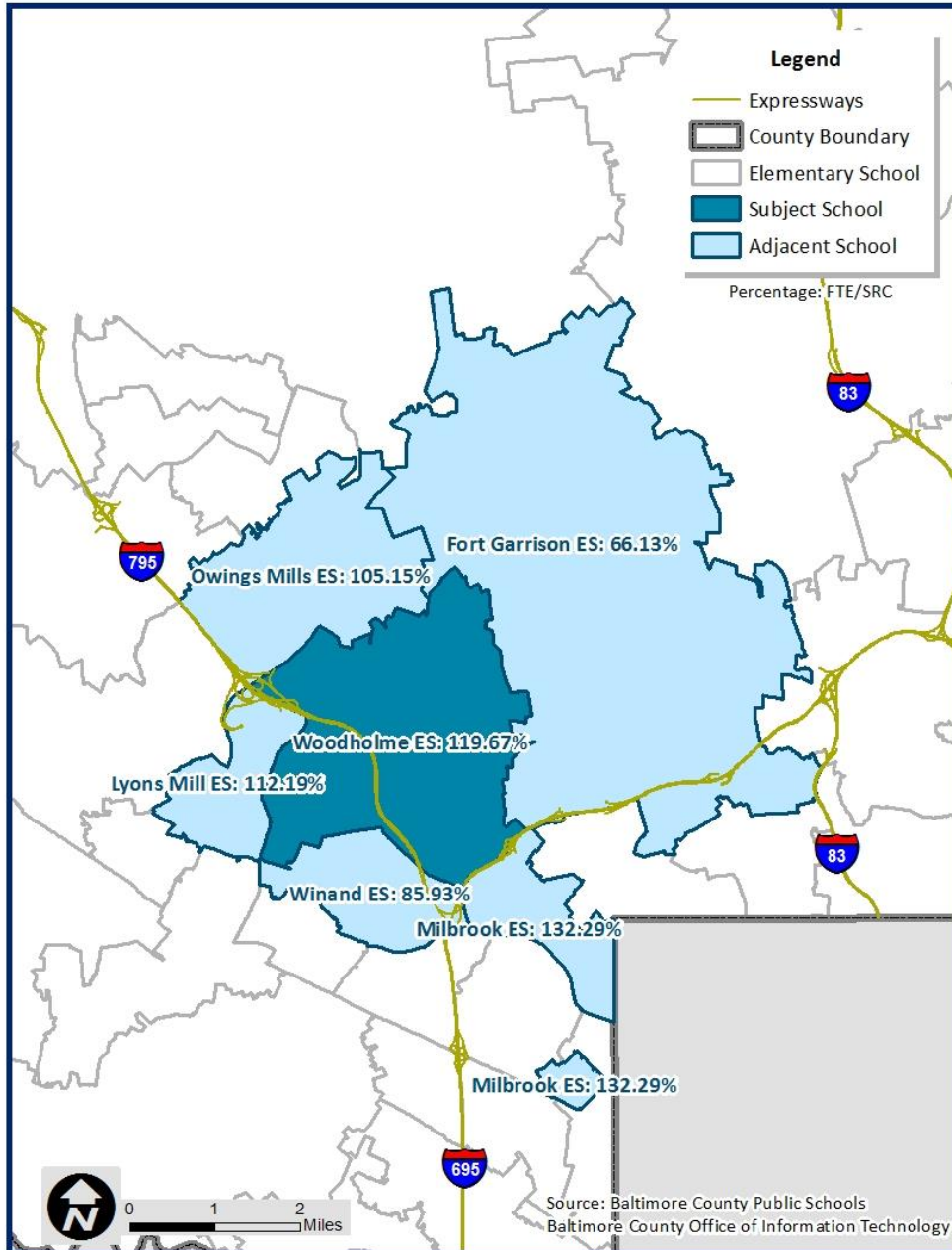
The Victory Villa Elementary School's enrollment of September 30, 2017 is 394. The State Rated Capacity (SRC) for this school is 326. Based on these numbers, Victory Villa Elementary School is 120.86% of SRC. A school impact analysis will be performed for each proposed development project to determine whether a school adjacent to Victory Villa Elementary School (see map above) is overcrowded under Section 32-6-103(f) of the Baltimore County Code. The County's \$1.3 billion Schools for Our Future capital program as outlined on pages 39-40 will factor into the school impact analysis as required by Section 32-6-103(f).

Vincent Farm Elementary School



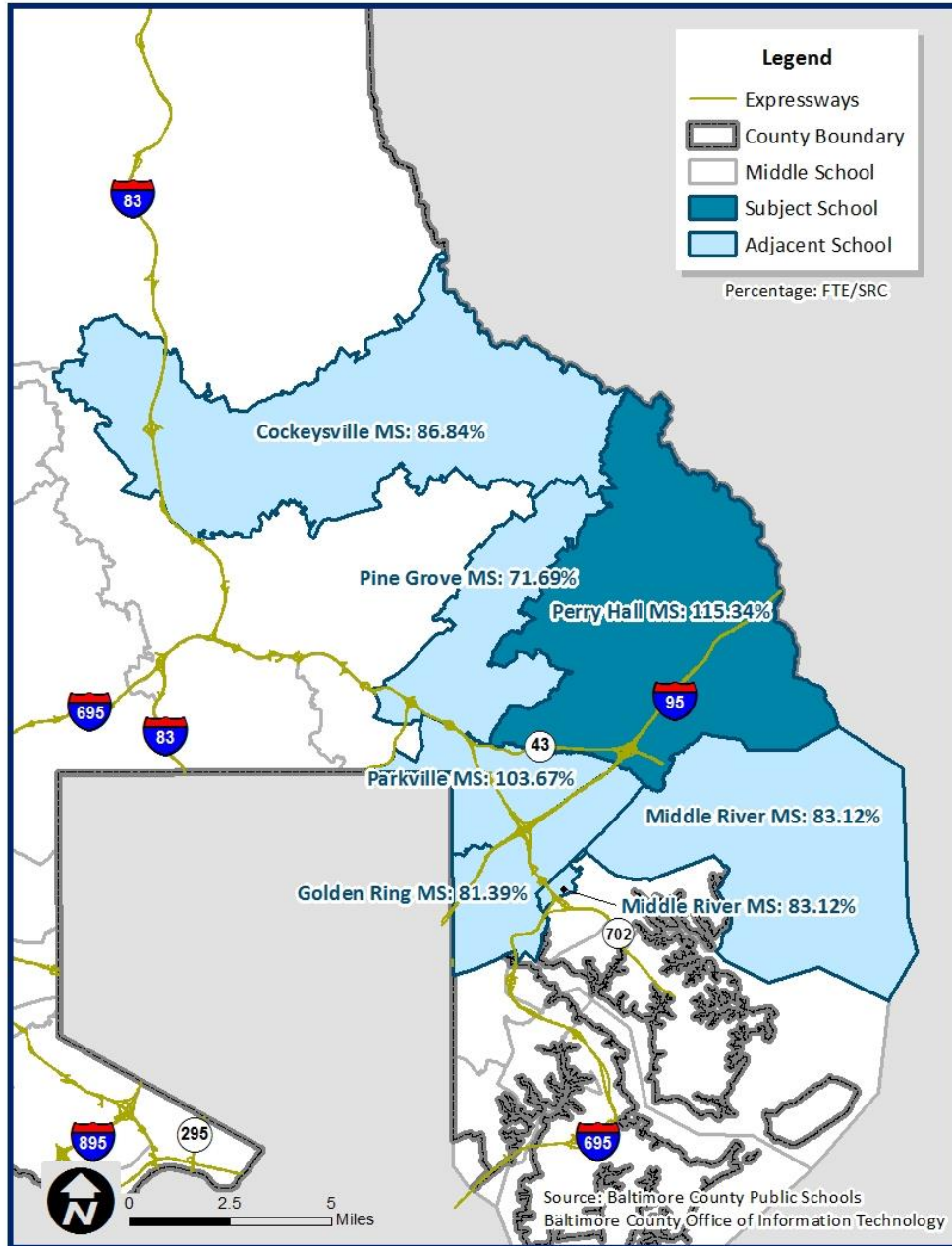
The Vincent Farm Elementary School's enrollment of September 30, 2017 is 901. The State Rated Capacity (SRC) for this school is 699. Based on these numbers, Vincent Farm Elementary School is 128.90% of SRC. A school impact analysis will be performed for each proposed development project to determine whether a school adjacent to Vincent Farm Elementary School (see map above) is overcrowded under Section 32-6-103(f) of the Baltimore County Code. The County's \$1.3 billion Schools for Our Future capital program as outlined on pages 39-40 will factor into the school impact analysis as required by Section 32-6-103(f).

Woodholme Elementary School



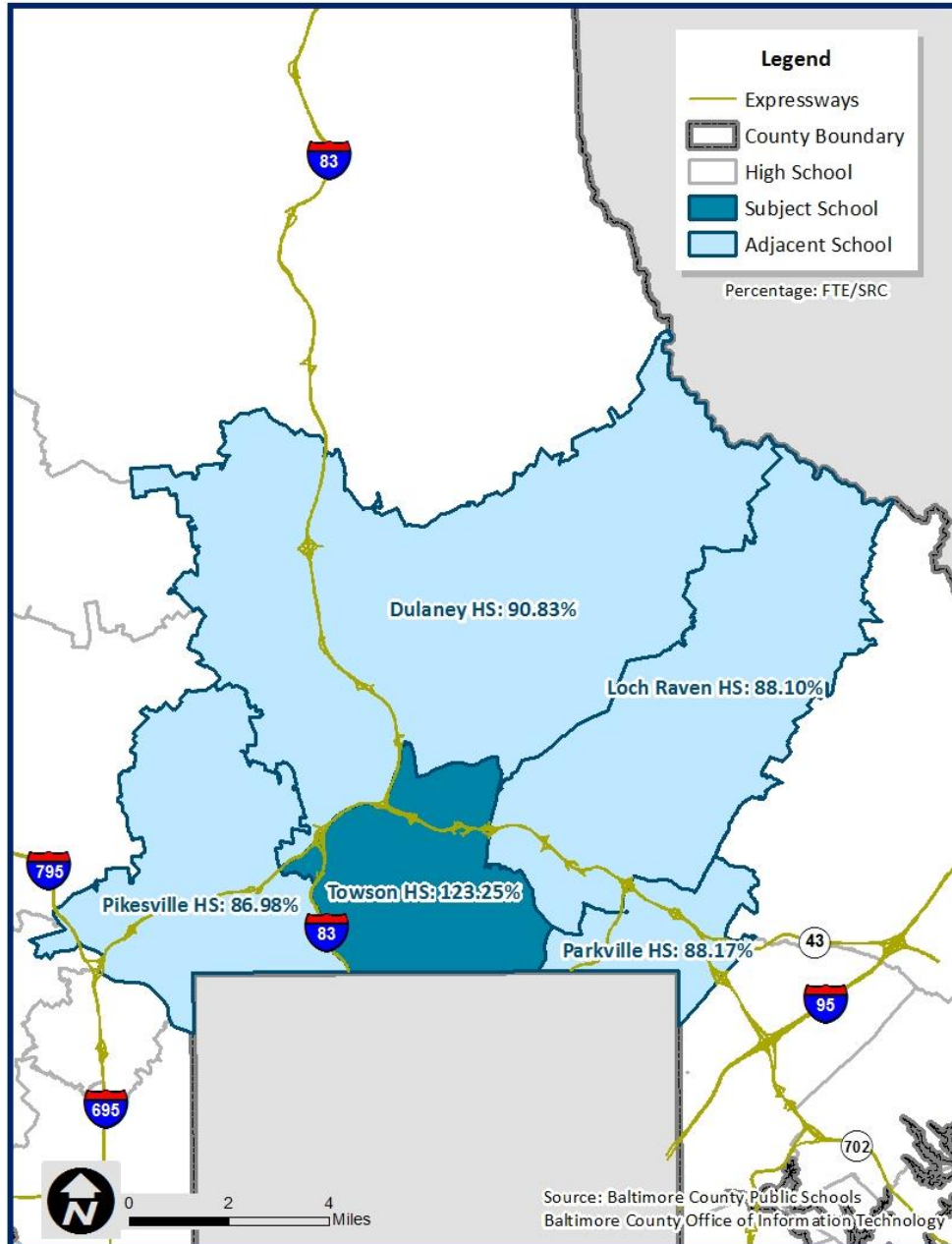
The Woodholme Elementary School's enrollment of September 30, 2017 is 809. The State Rated Capacity (SRC) for this school is 676. Based on these numbers, Woodholme Elementary School is 119.67% of SRC. A school impact analysis will be performed for each proposed development project to determine whether a school adjacent to Woodholme Elementary School (see map above) is overcrowded under Section 32-6-103(f) of the Baltimore County Code. The County's \$1.3 billion Schools for Our Future capital program as outlined on pages 39-40 will factor into the school impact analysis as required by Section 32-6-103(f).

Perry Hall Middle School



The Perry Hall Middle School's enrollment of September 30, 2017 is 1,895. The State Rated Capacity (SRC) for this school is 1,643. Based on these numbers, Perry Hall Middle School is 115.34% of SRC. A school impact analysis will be performed for each proposed development project to determine whether a school adjacent to Perry Hall Middle School (see map above) is overcrowded under Section 32-6-103(f) of the Baltimore County Code. The County's \$1.3 billion Schools for Our Future capital program as outlined on pages 39-40 will factor into the school impact analysis as required by Section 32-6-103(f).

Towson High School



The Towson High School's enrollment of September 30, 2017 is 1,553. The State Rated Capacity (SRC) for Towson High School is 1,260. Based on these numbers, Towson High School is 123.25% of SRC. A school impact analysis will be performed for each proposed development project to determine whether a school adjacent to Towson High School (see map above) is overcrowded under Section 32-6-103(f) of the Baltimore County Code. The County's \$1.3 billion Schools for Our Future capital program as outlined on pages 39-40 will factor into the school impact analysis as required by Section 32-6-103(f).

Appendix: Schools for Our Future

SCHOOLS FOR OUR FUTURE PROGRAM

New Schools									
#	CMD	Area	School	Seats Construct	Net New Seats	A/C Seats	County FY Funding	Estimated Completion	
1	1	SW	Catonsville ES (Bloomsbury)	705	300	705	FY15/16	AUG 2016	
2	1	SW	* Relay ES	700	285	285	FY15/16	AUG 2017	
3	1	SW	* Westowne ES	650	170	650	FY15/16	AUG 2016	
4	1	SW	* Lansdowne ES	735	422	700	FY16/17	AUG 2018	
5	1	SW	* Chadwick ES	700	292	292	FY18	AUG 2020	
6	4	NW	Lyons Mill ES	681	681	681	FY13/14	AUG 2015	
7	2	NW	* Summit Park ES	700	364	364	FY18/20	AUG 2021	
8	2	NW	* Bedford ES	700	391	700	FY18/20	AUG 2021	
9	3	C	Mays Chapel ES	702	702	702	FY12	AUG 2014	
10	6	NE	* Victory Villa ES	735	409	735	FY16/17	AUG 2018	
11	5	NE	Joppa Road Site	700	700	700	FY16/17	AUG 2018	
12	6	NE	Ridge Road Site	700	700	700	FY18/20	AUG 2020	
13	5	NE	Nottingham Site	1,500	1,500	1,500	FY18/20	AUG 2021	
14	7	SE	* Berkshire ES	600	172	600	FY18/20	AUG 2020	
15	7	SE	* Colgate ES	500	181	500	FY18/20	AUG 2020	
16	7	SE	* Dundalk ES	700	110	700	FY18	AUG 2019	
Subtotal				11,708	7,379	10,514			

* Schools to be demolished upon replacement for improved operating efficiency and energy savings.

Additions									
#	CMD	Area	School	Seats Construct	Net New Seats	A/C Seats	County FY Funding	Estimated Completion	
1	1	SW	Westchester ES	193	193	193	FY15/16	AUG 2016	
2	4	NW	Scotts Branch ES	189	189	189	FY20	AUG 2021	
3	2	NW	Fort Garrison ES	269	269	269	FY20	AUG 2021	
4	4	NW	Deer Park ES	249	249	249	FY20	AUG 2021	
5	2	NW	Pikesville HS	13	13	1,019	FY14/15/16	AUG 2016	
6	3	C	Sparks ES	194	194	194	FY14	AUG 2015	
7	5	C	Stoneleigh ES	200	200	700	FY12/13	AUG 2013	
8	3	C	Hampton ES	200	200	648	FY12	AUG 2013	
9	3	C	Hereford HS	318	318	1,548	FY12/13	AUG 2015	
10	3	C	Padonia International ES	264	264	264	FY15	AUG 2018	
11	6	NE	Red House Run ES	214	214	214	FY20	AUG 2021	
12	3	NE	Pine Grove MS	300	300	300	FY18/20	AUG 2021	
Subtotal				2,603	2,603	5,787			

Air Conditioning Initiative									
#	CMD	Area	School	Seats Construct	Net New Seats	A/C Seats	County FY Funding	Estimated Completion of A/C in Classrooms	
1	1	SW	Baltimore Highlands ES			549	FY17	AUG 2017	
2	1	SW	Edmondson Heights ES			538	FY17	AUG 2017	
3	1	SW	Arbutus MS			1,036	FY17	AUG 2017	
4	4	SW	Hebbsville ES			540	FY13/14	AUG 2014	
5	4	SW	Featherbed Lane ES			654	FY14	AUG 2015	
6	4	SW	Woodmoor ES			631	FY13/14	AUG 2014	
7	1	SW	Southwest Academy			1,101	FY17 Sup App	AUG 2017	

Air Conditioning Initiative Continued								
#	CMD	Area	School	Seats Construct	Net New Seats	A/C Seats	County FY Funding	Estimated Completion of A/C in Classrooms
8	4	NW	Church Lane ES			476	FY17	AUG 2017
9	2	NW	Reisterstown ES			450	FY17	AUG 2017
10	2	NW	Fort Garrison ES			431	FY13/14	AUG 2014
11	2	NW	Sudbrook Magnet MS			1,060	FY13/14	OCT 2015
12	4	NW	Scotts Branch ES			511	FY14	APR 2016
13	2	NW	Wellwood ES			455	FY14	AUG 2015
14	2	NW	Franklin ES			473	FY13/14	MAY 2015
15	2	NW	Franklin MS			1,389	FY17	AUG 2017
16	2	NW	Franklin HS			1,647	FY17 Sup App	AUG 2018
17	3	C	Pot Spring ES			477	FY17	AUG 2017
18	5	C	Oakleigh ES			496	FY17	AUG 2017
19	3	C	Timonium ES			395	FY13/14	AUG 2015
20	6	C	Halstead Academy			516	FY15	AUG 2016
21	5	C	Dumbarton MS			1,114	FY14	AUG 2018
22	5	C	Pleasant Plains ES			509	FY16	AUG 2017
23	5	C	Villa Cresta ES			637	FY16	AUG 2016
24	5	NE	Carney ES			551	FY16	AUG 2016
25	5	NE	Joppa View ES			635	FY16	AUG 2016
26	5	NE	Chapel Hill ES			636	FY17	AUG 2017
27	6	NE	Golden Ring MS			849	FY17 Sup App	AUG 2017
28	6	NE	Middle River MS			1,007	FY17 Sup App	AUG 2017
29	6	NE	Orems ES			313	FY17	AUG 2017
30	6	NE	Overlea HS			1,230	FY14/15	APR 2017
31	7	NE	Stemmers Run MS			1,154	FY17 Sup App	AUG 2017
32	6	NE	Parkville MS			1,089	FY14	AUG 2015
33	7	NE	Middlesex ES			517	FY13/14	AUG 2014
34	5	NE	Kingsville ES			349	FY17	AUG 2017
35	7	NE	Kenwood HS			1,918	FY17 Sup App	DEC 2018
36	6	SE	Chase ES			393	FY16	AUG 2016
37	7	SE	Middleborough ES			326	FY13/14	MAY 2015
38	7	SE	Sussex ES			380	FY13/14	MAY 2015
39	6	SE	Hawthorne ES			587	FY14	APR 2016
40	7	SE	Grange ES			385	FY17	AUG 2017
41	7	SE	Battle Grove ES			377	FY17	AUG 2017
42	7	SE	Charlesmont ES			418	FY17	AUG 2017
43	7	SE	Bear Creek ES			484	FY17	AUG 2017
Subtotal				-	-	29,683		

High School Initiative								
#	CMD	Area	School	Seats Construct	Net New Seats	A/C Seats	County FY Funding	Estimated Completion of A/C in Classrooms
1	1	SW	Lansdowne HS			1,420	FY16/17	AUG 2019
2	1	SW	Woodlawn HS			2,129	FY16/17	AUG 2019
3	7	SE	Patapsco HS Ctr for Arts			1,302	FY16/17	AUG 2019
Subtotal				-	-	4,851		

Schools For Our Future			
	Seats Construct	Net New Seats	A/C Seats
TOTAL	14,311	9,982	50,835