

2016 – 2017 School Adequate Public Facilities Ordinance Report and Maps



**Baltimore County Department of Planning
May 2, 2017**

Report Summary

Section 32-6-103(f) of the Baltimore County Code requires that the Department of Planning furnish the School Adequate Public Facilities Ordinance Report and Maps using September 30, 2016 school enrollment data, indicating overcrowded school districts in accordance with parameters in the referenced County Code.

The full time equivalent (FTE) enrollments of September 30, 2016 and the same school year's state rated capacity (SRC) are presented for all the elementary, middle, and high schools in the first section of this report. The second section reviews schools that are at or over 115% of the SRC.

In the 2016-2017 school year, the FTEs of 30 elementary schools, one middle school, and one high school are at or over 115% of their SRCs. A school impact analysis will be performed for each proposed development project to determine whether a school district is overcrowded under Section 32-6-103(f) of the Baltimore County Code.

Table of Contents

<i>September 30, 2016 Systemwide Capacities</i>	2
<i>Baltimore Highlands Elementary School</i>	7
<i>Chadwick Elementary School</i>	8
<i>Chapel Hill Elementary School</i>	9
<i>Colgate Elementary School</i>	10
<i>Deep Creek Elementary School</i>	11
<i>Fullerton Elementary School</i>	12
<i>Glenmar Elementary School</i>	13
<i>Gunpowder Elementary School</i>	14
<i>Halethorpe Elementary School</i>	15
<i>Harford Hills Elementary School</i>	16
<i>Johnnycake Elementary School</i>	17
<i>Joppa View Elementary School</i>	18
<i>Lansdowne Elementary School</i>	19
<i>Logan Elementary School</i>	20
<i>Milbrook Elementary School</i>	21
<i>New Town Elementary School</i>	22
<i>Oakleigh Elementary School</i>	23
<i>Padonia Elementary School</i>	24
<i>Perry Hall Elementary School</i>	25
<i>Pleasant Plains Elementary School</i>	26
<i>Reisterstown Elementary School</i>	27
<i>Relay Elementary School</i>	28
<i>Scotts Branch Elementary School</i>	29
<i>Seneca Elementary School</i>	30
<i>Shady Spring Elementary School</i>	31
<i>Summit Park Elementary School</i>	32
<i>Sussex Elementary School</i>	33
<i>Victory Villa Elementary School</i>	34
<i>Vincent Farm Elementary School</i>	35
<i>Woodholme Elementary School</i>	36
<i>Ridgely Middle School</i>	37
<i>Towson High School</i>	38
<i>Appendix: Schools for Our Future</i>	39

September 30, 2016 Systemwide Capacities

Elementary Schools	2016 FTE	2016 SRC	FTE/SRC
Arbutus ES	418	405	103.21%
Baltimore Highlands ES	674	549	122.77%
Battle Grove ES	297	377	78.78%
Bear Creek ES	462	484	95.45%
Bedford ES	313	309	101.29%
Berkshire ES	479	428	111.92%
Carney ES	577	574	100.52%
Carroll Manor ES	349	362	96.41%
Catonsville ES	554	705	78.58%
Cedarmere ES	534	474	112.66%
Chadwick ES	603	408	147.79%
Chapel Hill ES	814	636	127.99%
Charlesmont ES	420	418	100.48%
Chase ES	327	393	83.21%
Chatsworth ES	367	442	83.03%
Chesapeake Terrace ES	306	292	104.79%
Church Lane ES	436	476	91.60%
Colgate ES	432	319	135.42%
Cromwell Valley ES Magnet	304	411	73.97%
Deep Creek ES	502	368	136.41%
Deer Park ES	446	451	98.89%
Dogwood ES	639	612	104.41%
Dundalk ES	654	590	110.85%
Edgemere ES	478	523	91.40%
Edmondson Heights ES	547	589	92.87%
Elmwood ES	531	474	112.03%
Essex ES	478	471	101.49%
Featherbed Lane ES	612	654	93.58%
Fifth District ES	294	274	107.30%
Fort Garrison ES	315	431	73.09%
Franklin ES	450	473	95.14%
Fullerton ES	617	463	133.26%
Glenmar ES	459	371	123.72%
Glyndon ES	499	520	95.96%
Grange ES	437	385	113.51%
Gunpowder ES	577	499	115.63%

September 30, 2016 Systemwide Capacities (cont'd)

Elementary Schools	2016 FTE	2016 SRC	FTE/SRC
Halethorpe ES	480	392	122.45%
Halstead Academy	512	516	99.22%
Hampton ES	572	648	88.27%
Harford Hills ES	421	323	130.34%
Hawthorne ES	508	587	86.54%
Hebbville ES	430	540	79.63%
Hernwood ES	430	415	103.61%
Hillcrest ES	718	666	107.81%
Jacksonville ES	550	637	86.34%
Johnnycake ES	668	559	119.50%
Joppa View ES	781	635	122.99%
Kingsville ES	356	349	102.01%
Lansdowne ES	489	313	156.23%
Logan ES	631	517	122.05%
Lutherville ES	396	407	97.30%
Lyons Mill ES	718	681	105.43%
Mars Estates ES	412	431	95.59%
Martin Blvd ES	292	291	100.34%
Mays Chapel ES	724	702	103.13%
McCormick ES	369	380	97.11%
Middleborough ES	356	326	109.20%
Middlesex ES	520	517	100.58%
Milbrook ES	415	319	130.09%
New Town ES	839	703	119.35%
Norwood ES (Pre K - 3)	480	521	92.13%
Oakleigh ES	595	496	119.96%
Oliver Beach ES	185	265	69.81%
Orems ES	333	313	106.39%
Owings Mills ES	687	699	98.28%
Padonia ES	477	311	153.38%
Perry Hall ES	726	528	137.50%
Pine Grove ES	541	497	108.85%
Pinewood ES	500	566	88.34%
Pleasant Plains ES	616	509	121.02%
Pot Spring ES	436	477	91.40%
Powhatan ES	297	313	94.89%

September 30, 2016 Systemwide Capacities (cont'd)

Elementary Schools	2016 FTE	2016 SRC	FTE/SRC
Prettyboy ES	423	398	106.28%
Randallstown ES	375	398	94.22%
Red House Run ES	537	486	110.49%
Reisterstown ES	581	450	129.11%
Relay ES	508	415	122.41%
Riderwood ES	431	463	93.09%
Riverview ES	579	572	101.22%
Rodgers Forge ES	428	396	108.08%
Sandalwood ES	542	542	100.00%
Sandy Plains ES	589	664	88.70%
Scotts Branch ES	597	511	116.83%
Seneca ES	480	409	117.36%
Seven Oaks ES	441	428	103.04%
Seventh District ES	401	461	86.98%
Shady Spring ES	657	499	131.66%
Sparks ES	509	604	84.27%
Stoneleigh ES	724	700	103.43%
Summit Park ES	491	336	146.13%
Sussex ES	459	380	120.79%
Timber Grove ES	601	600	100.17%
Timonium ES	442	395	111.90%
Victory Villa ES	411	326	126.07%
Villa Cresta ES	714	637	112.09%
Vincent Farm ES	884	699	126.47%
Warren ES	411	395	104.05%
Wellwood ES	521	455	114.51%
West Towson ES	517	451	114.63%
Westchester ES	617	692	89.16%
Westowne ES	601	650	92.46%
Winand ES	509	583	87.31%
Winfield ES	460	485	94.85%
Woodbridge ES	423	432	97.92%
Woodholme ES	823	676	121.75%
Woodmoor ES	568	631	90.02%
Total for Elementary Schools	53,915	51,178	105.35%

FTE: Full Time Equivalent Enrollment. SRC: State Rated Capacity.
 Systemwide, there are 2,737 seats greater than SRC.

September 30, 2016 Systemwide Capacities (cont'd)

Middle Schools	2016 FTE	2016 SRC	FTE/SRC
Arbutus MS	867	1,011	85.76%
Catonsville MS	841	774	108.66%
Cockeysville MS	802	1,049	76.45%
Deep Creek MS	855	1,113	76.82%
Deer Park Magnet MS	1,295	1,368	94.66%
Dumbarton MS	1,145	1,114	102.78%
Dundalk MS	701	814	86.12%
Franklin MS	1,316	1,389	94.74%
General John Stricker MS	728	1,100	66.18%
Golden Ring MS	684	849	80.57%
Hereford MS	1,002	1,123	89.23%
Holabird MS (4 - 8)	933	967	96.48%
Lansdowne MS	755	954	79.14%
Loch Raven Academy	753	901	83.57%
Middle River MS	825	1,007	81.93%
Northwest Academy of Health Sciences*	746	983	75.89%
Parkville MS	1,122	1,089	103.03%
Perry Hall MS	1,851	1,643	112.66%
Pikesville MS	965	1,006	95.92%
Pine Grove MS	892	1,293	68.99%
Ridgely MS	1,233	1,070	115.23%
Southwest Academy	809	1,101	73.48%
Sparrows Point MS	548	573	95.64%
Stemmers Run MS	740	1,154	64.12%
Sudbrook Magnet MS	1,034	1,060	97.55%
Windsor Mill MS	495	720	68.75%
Woodlawn MS	613	953	64.32%
Total for Middle Schools	24,550	28,178	87.12%

FTE: Full Time Equivalent Enrollment.

SRC: State Rated Capacity.

Systemwide, there are 3,628 seats fewer than SRC.

*: Former Old Court MS.

September 30, 2016 Systemwide Capacities (cont'd)

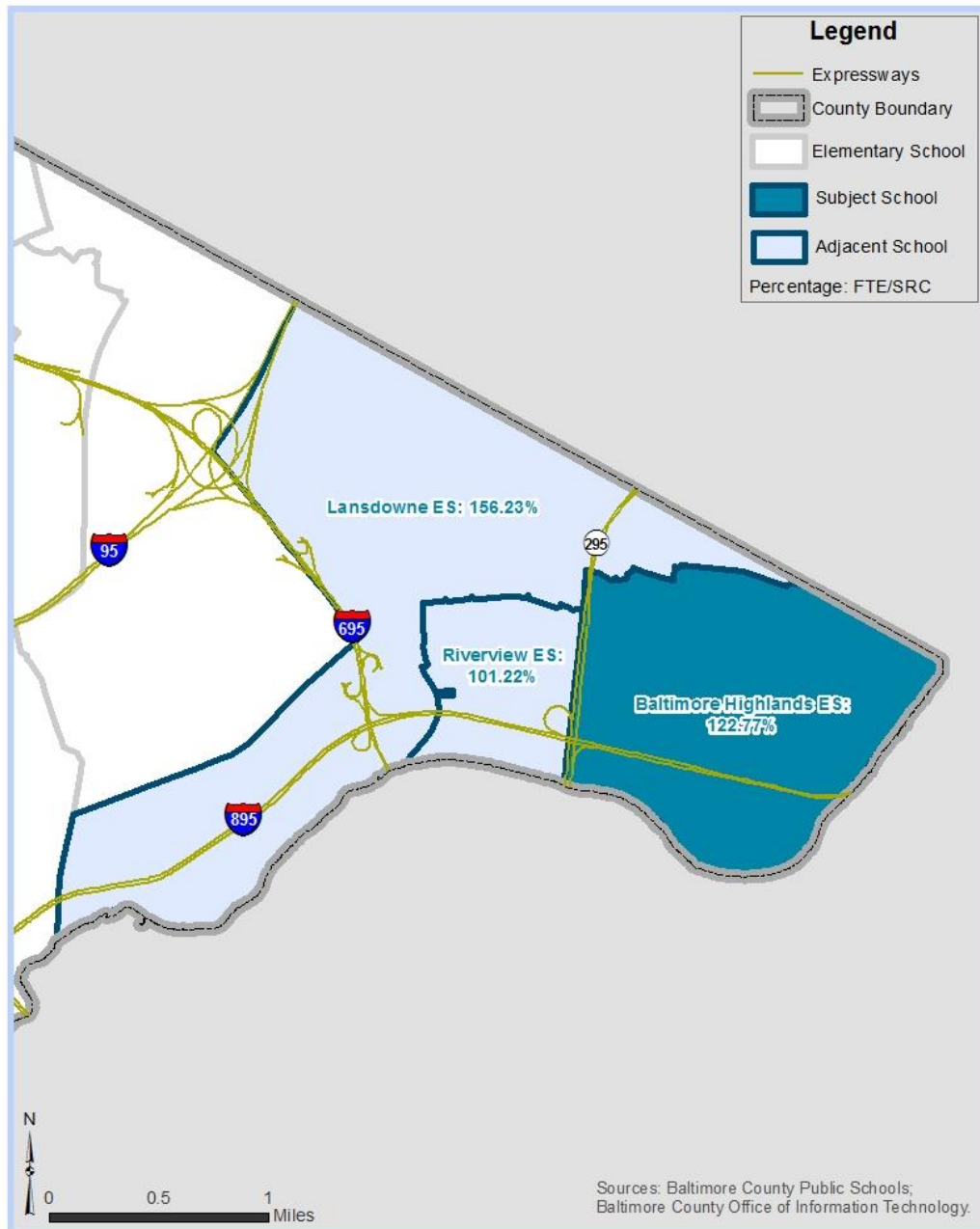
High Schools	2016 FTE	2016 SRC	FTE/SRC
Catonsville HS	1,754	1,750	100.23%
Chesapeake HS	965	1,019	94.70%
Dulaney HS	1,828	1,984	92.14%
Dundalk HS	1,496	1,446	103.46%
Eastern Tech HS	1,174	1,339	87.68%
Franklin HS	1,603	1,647	97.33%
G.W. Carver Center	878	1,029	85.33%
Hereford HS	1,249	1,548	80.68%
Kenwood HS	1,619	1,918	84.41%
Lansdowne HS	1,338	1,420	94.23%
Loch Raven HS	839	975	86.05%
Milford Mill Academy	1,351	1,465	92.22%
New Town HS	1,036	1,303	79.51%
Overlea HS	954	1,230	77.56%
Owings Mills HS	1,013	1,103	91.84%
Parkville HS	1,660	2,037	81.49%
Patapsco HS	1,467	1,302	112.67%
Perry Hall HS	1,993	2,110	94.45%
Pikesville HS	837	1,006	83.20%
Randallstown HS	965	1,379	69.98%
Sparrows Point HS	889	871	102.07%
Towson HS	1,509	1,260	119.76%
Western Sch. of Tech.	910	1,009	90.19%
Woodlawn HS	1,409	2,129	66.18%
Total for High Schools	30,736	34,279	89.66%

FTE: Full Time Equivalent Enrollment.

SRC: State Rated Capacity.

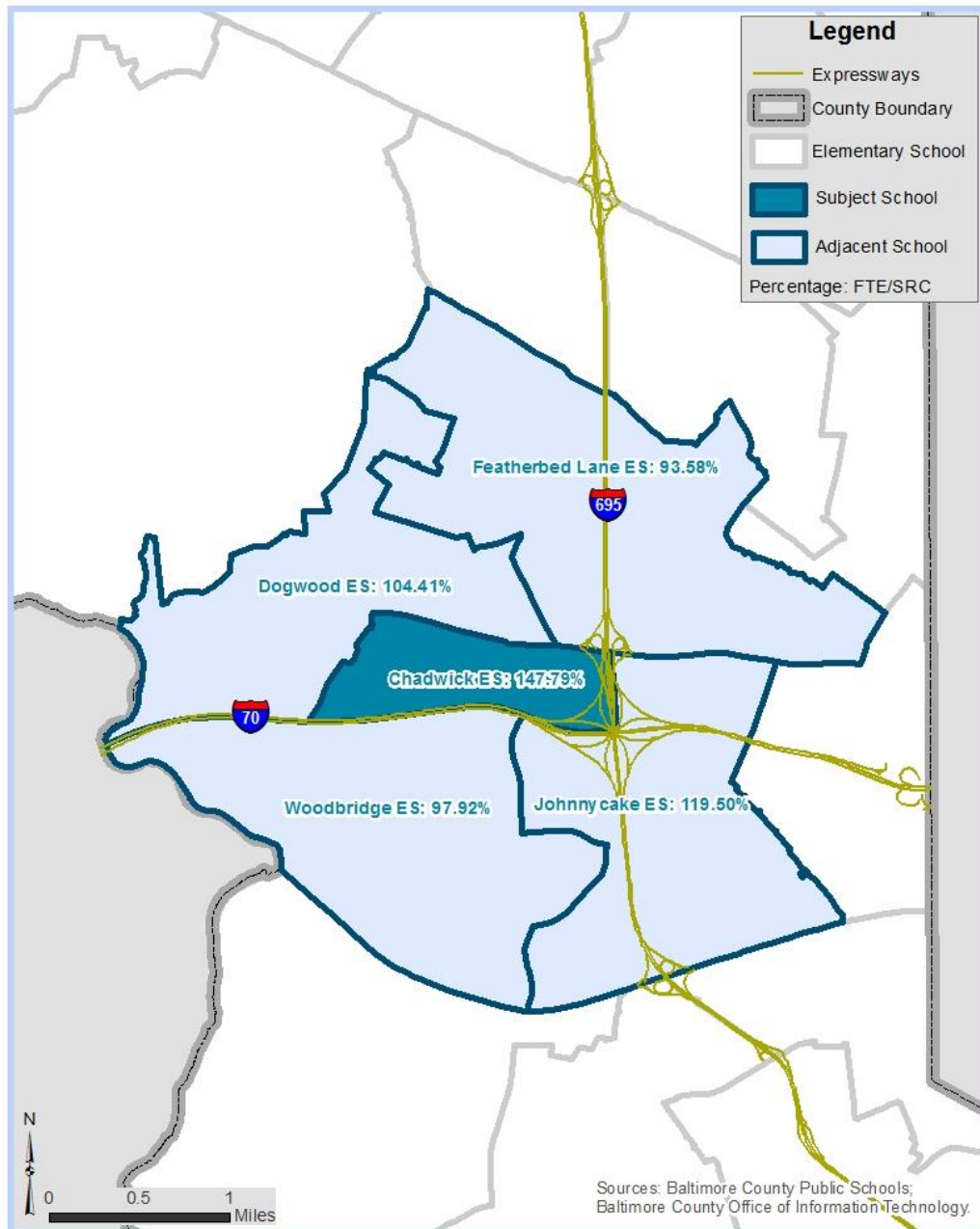
Systemwide, there are 3,543 seats fewer than SRC.

Baltimore Highlands Elementary School



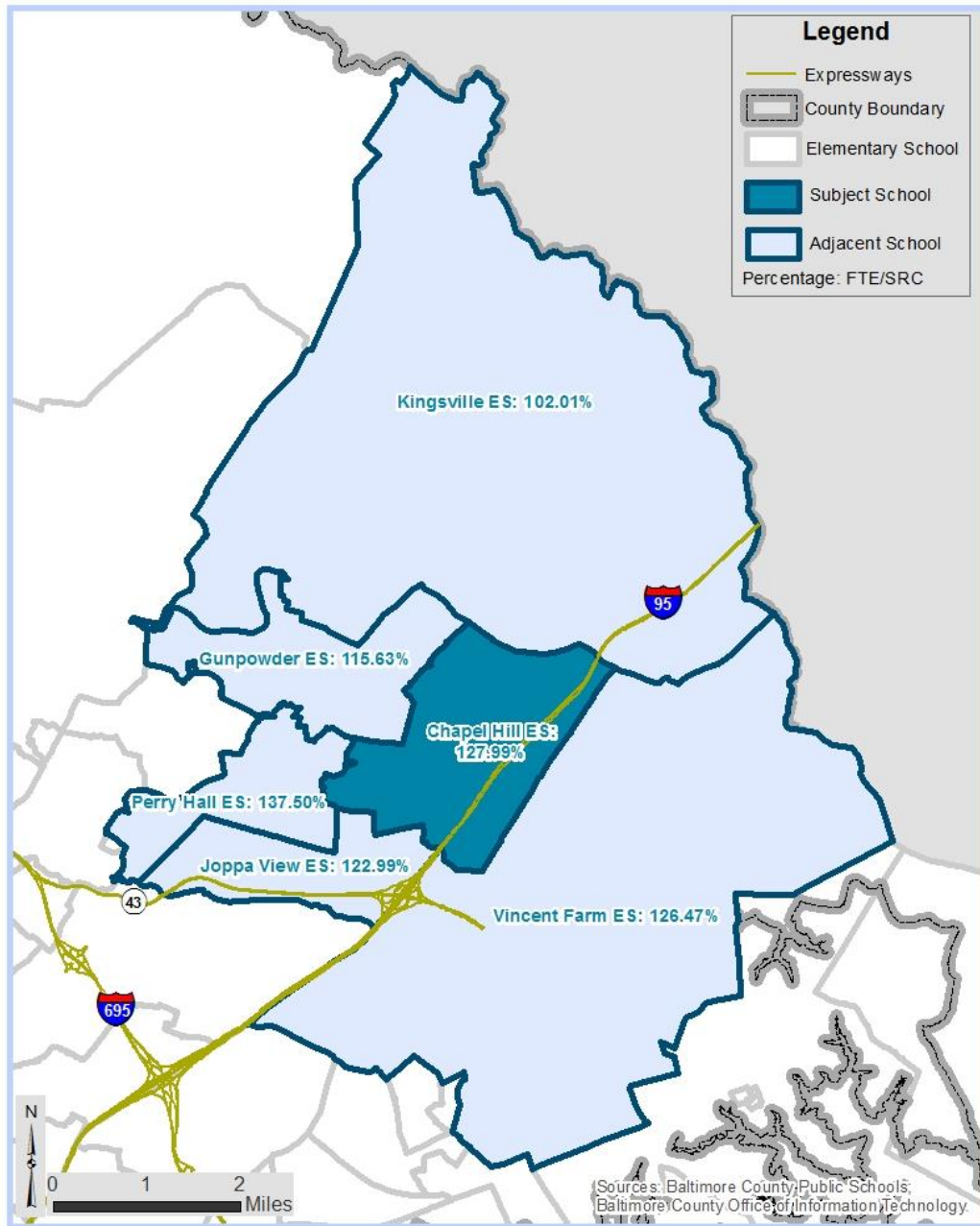
The Baltimore Highlands Elementary School's enrollment of September 30, 2016 is 674. The State Rated Capacity (SRC) for this school is 549. Based on these numbers, Baltimore Highlands Elementary School is 122.77% of SRC. A school impact analysis will be performed for each proposed development project to determine whether a school adjacent to Baltimore Highlands Elementary School (see map above) is overcrowded under Section 32-6-103(f) of the Baltimore County Code. The County's \$1.3 billion Schools for Our Future capital program as outlined on page 39 will factor into the school impact analysis as required by Section 32-6-103(f).

Chadwick Elementary School



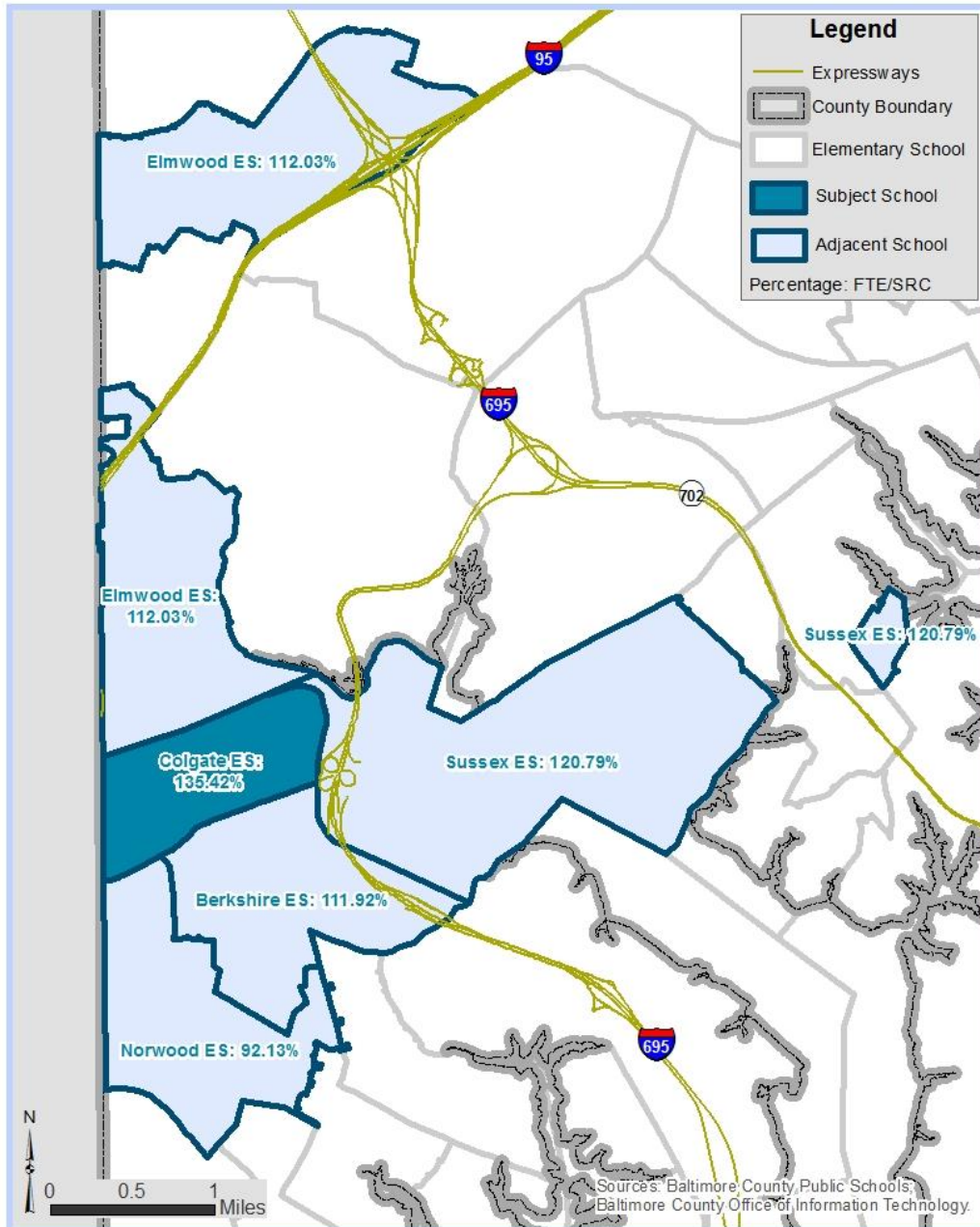
The Chadwick Elementary School's enrollment of September 30, 2016 is 603. The State Rated Capacity (SRC) for this school is 408. Based on these numbers, Chadwick Elementary School is 147.79% of SRC. A school impact analysis will be performed for each proposed development project to determine whether a school adjacent to Chadwick Elementary School (see map above) is overcrowded under Section 32-6-103(f) of the Baltimore County Code. The County's \$1.3 billion Schools for Our Future capital program as outlined on page 39 will factor into the school impact analysis as required by Section 32-6-103(f).

Chapel Hill Elementary School



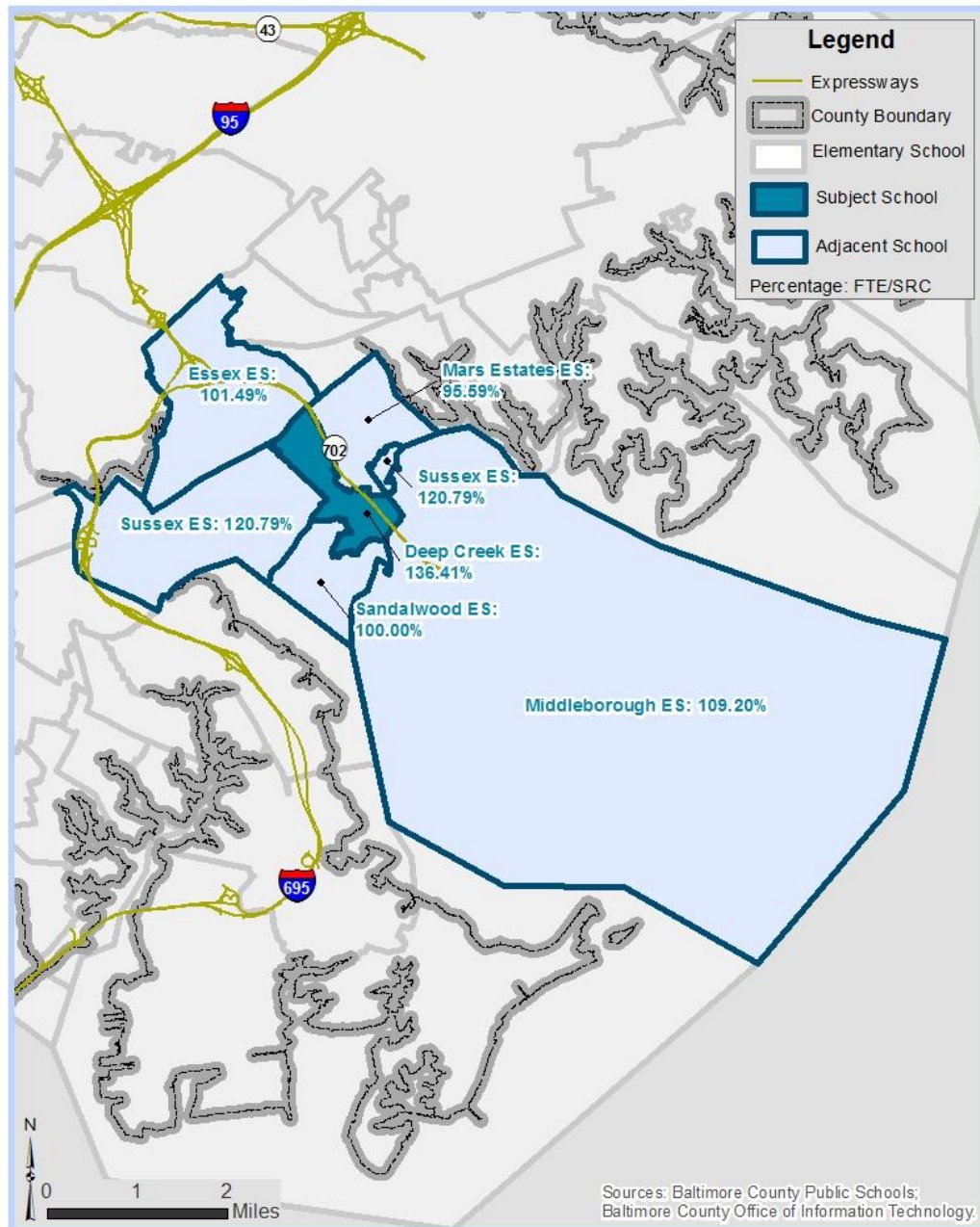
The Chapel Hill Elementary School's enrollment of September 30, 2016 is 814. The State Rated Capacity (SRC) for this school is 636. Based on these numbers, Chapel Hill Elementary School is 127.99% of SRC. A school impact analysis will be performed for each proposed development project to determine whether a school adjacent to Chapel Hill Elementary School (see map above) is overcrowded under Section 32-6-103(f) of the Baltimore County Code. The County's \$1.3 billion Schools for Our Future capital program as outlined on page 39 will factor into the school impact analysis as required by Section 32-6-103(f).

Colgate Elementary School



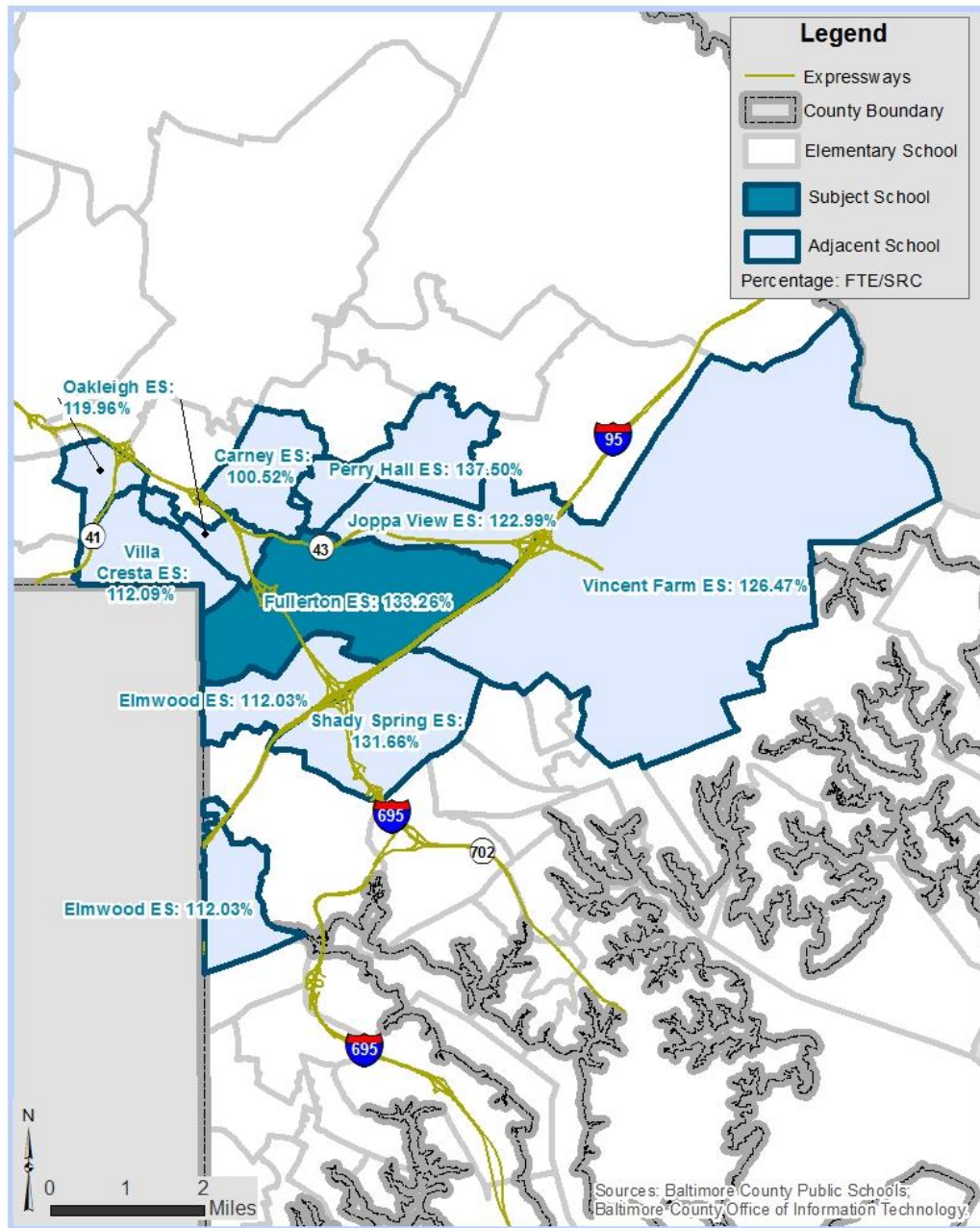
The Colgate Elementary School's enrollment of September 30, 2016 is 432. The State Rated Capacity (SRC) for this school is 319. Based on these numbers, Colgate Elementary School is 135.42% of SRC. A school impact analysis will be performed for each proposed development project to determine whether a school adjacent to Colgate Elementary School (see map above) is overcrowded under Section 32-6-103(f) of the Baltimore County Code. The County's \$1.3 billion Schools for Our Future capital program as outlined on page 39 will factor into the school impact analysis as required by Section 32-6-103(f).

Deep Creek Elementary School



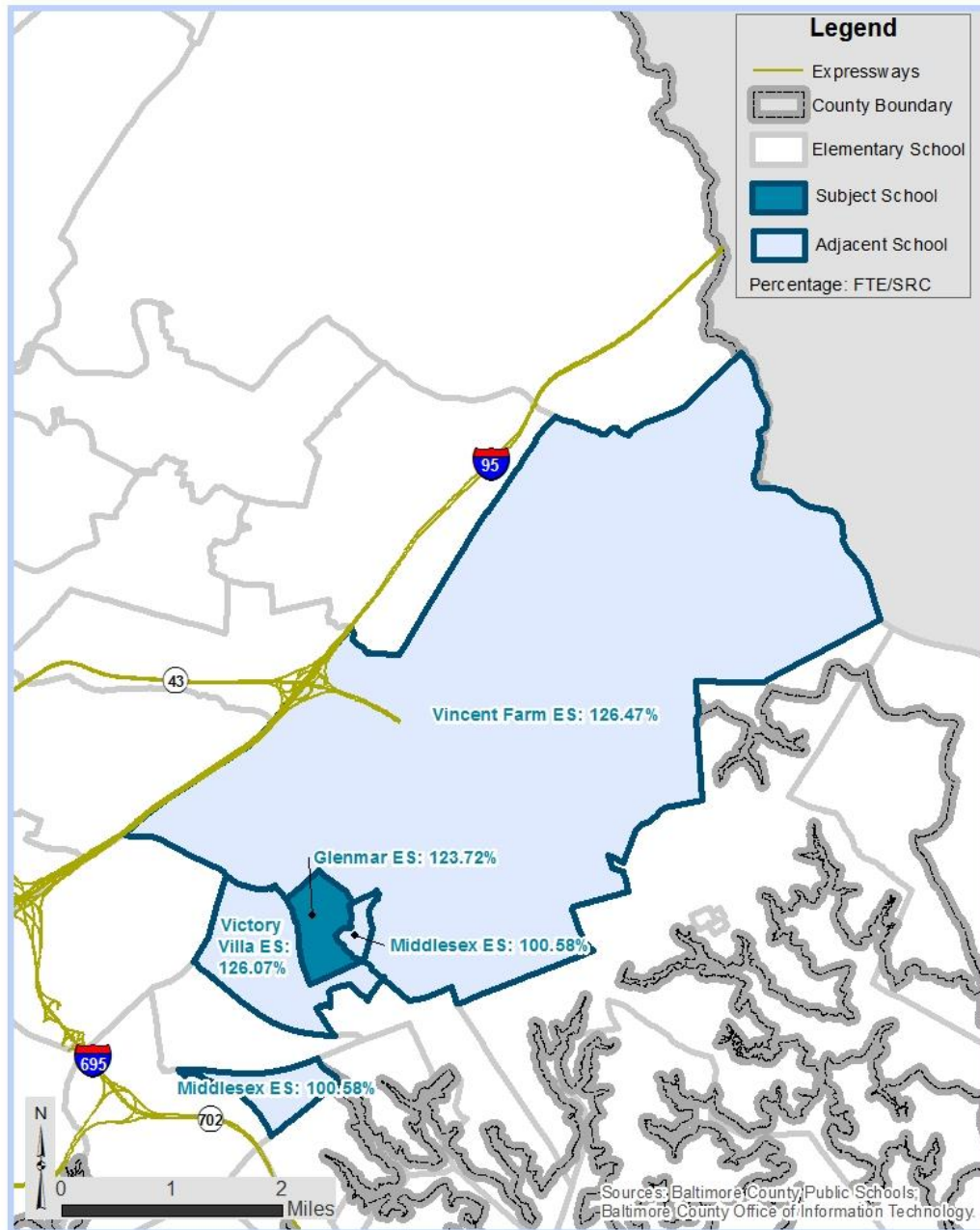
The Deep Creek Elementary School's enrollment of September 30, 2016 is 502. The State Rated Capacity (SRC) for this school is 368. Based on these numbers, Deep Creek Elementary School is 136.41% of SRC. A school impact analysis will be performed for each proposed development project to determine whether a school adjacent to Deep Creek Elementary School (see map above) is overcrowded under Section 32-6-103(f) of the Baltimore County Code. The County's \$1.3 billion Schools for Our Future capital program as outlined on page 39 will factor into the school impact analysis as required by Section 32-6-103(f).

Fullerton Elementary School



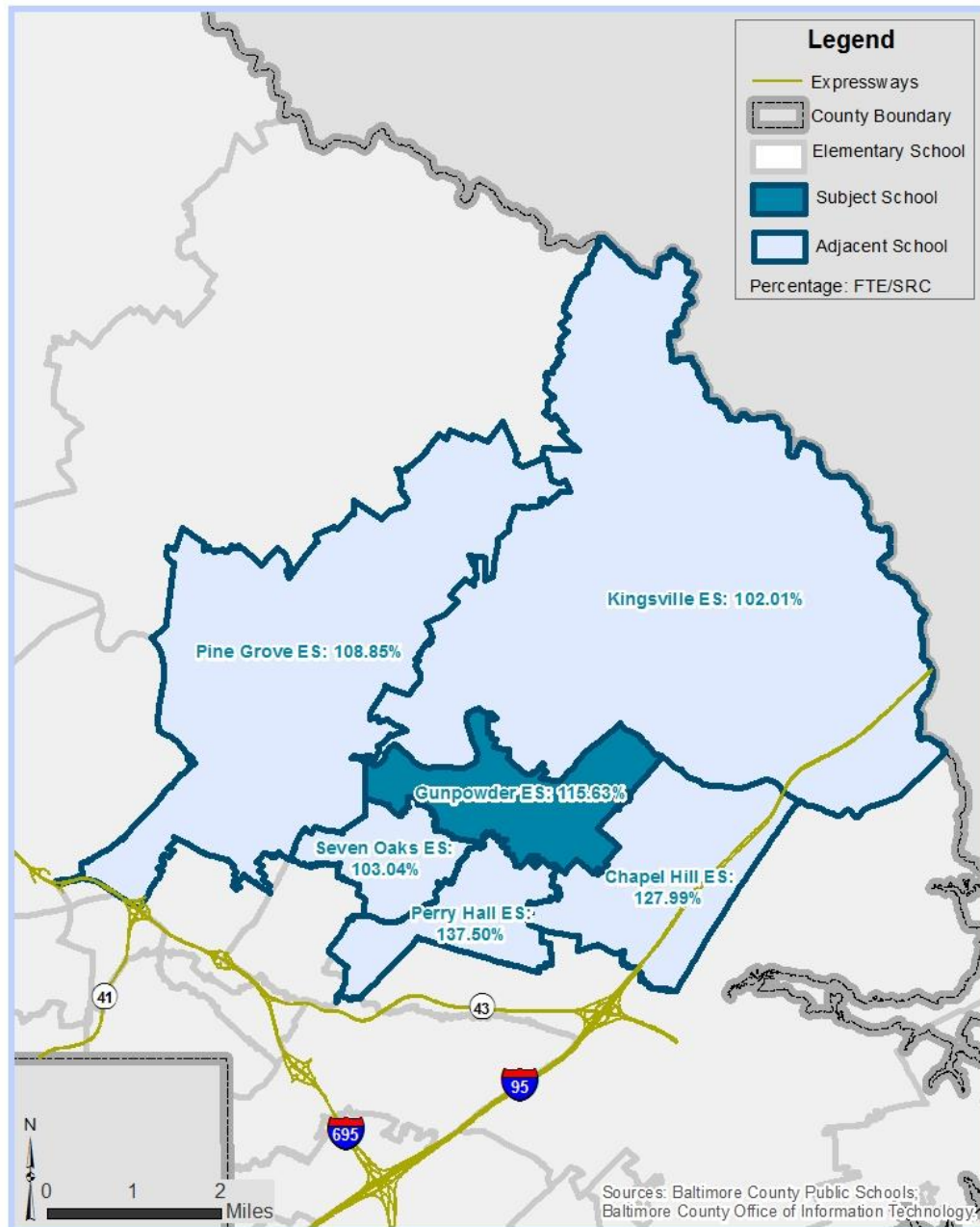
The Fullerton Elementary School's enrollment of September 30, 2016 is 617. The State Rated Capacity (SRC) for this school is 463. Based on these numbers, Fullerton Elementary School is 133.26% of SRC. A school impact analysis will be performed for each proposed development project to determine whether a school adjacent to Fullerton Elementary School (see map above) is overcrowded under Section 32-6-103(f) of the Baltimore County Code. The County's \$1.3 billion Schools for Our Future capital program as outlined on page 39 will factor into the school impact analysis as required by Section 32-6-103(f).

Glenmar Elementary School



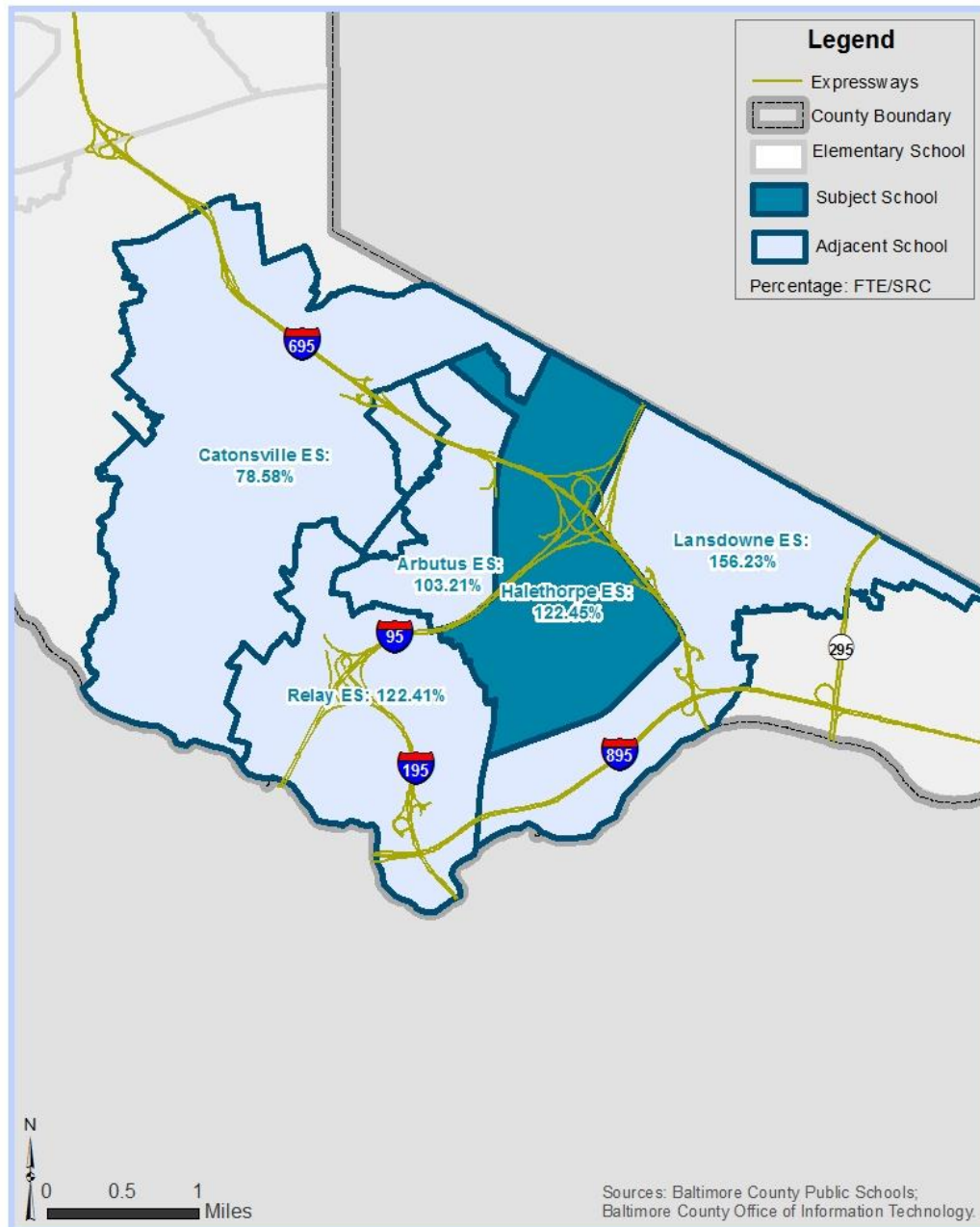
The Glenmar Elementary School's enrollment of September 30, 2016 is 459. The State Rated Capacity (SRC) for this school is 371. Based on these numbers, Glenmar Elementary School is 123.72% of SRC. A school impact analysis will be performed for each proposed development project to determine whether a school adjacent to Glenmar Elementary School (see map above) is overcrowded under Section 32-6-103(f) of the Baltimore County Code. The County's \$1.3 billion Schools for Our Future capital program as outlined on page 39 will factor into the school impact analysis as required by Section 32-6-103(f).

Gunpowder Elementary School



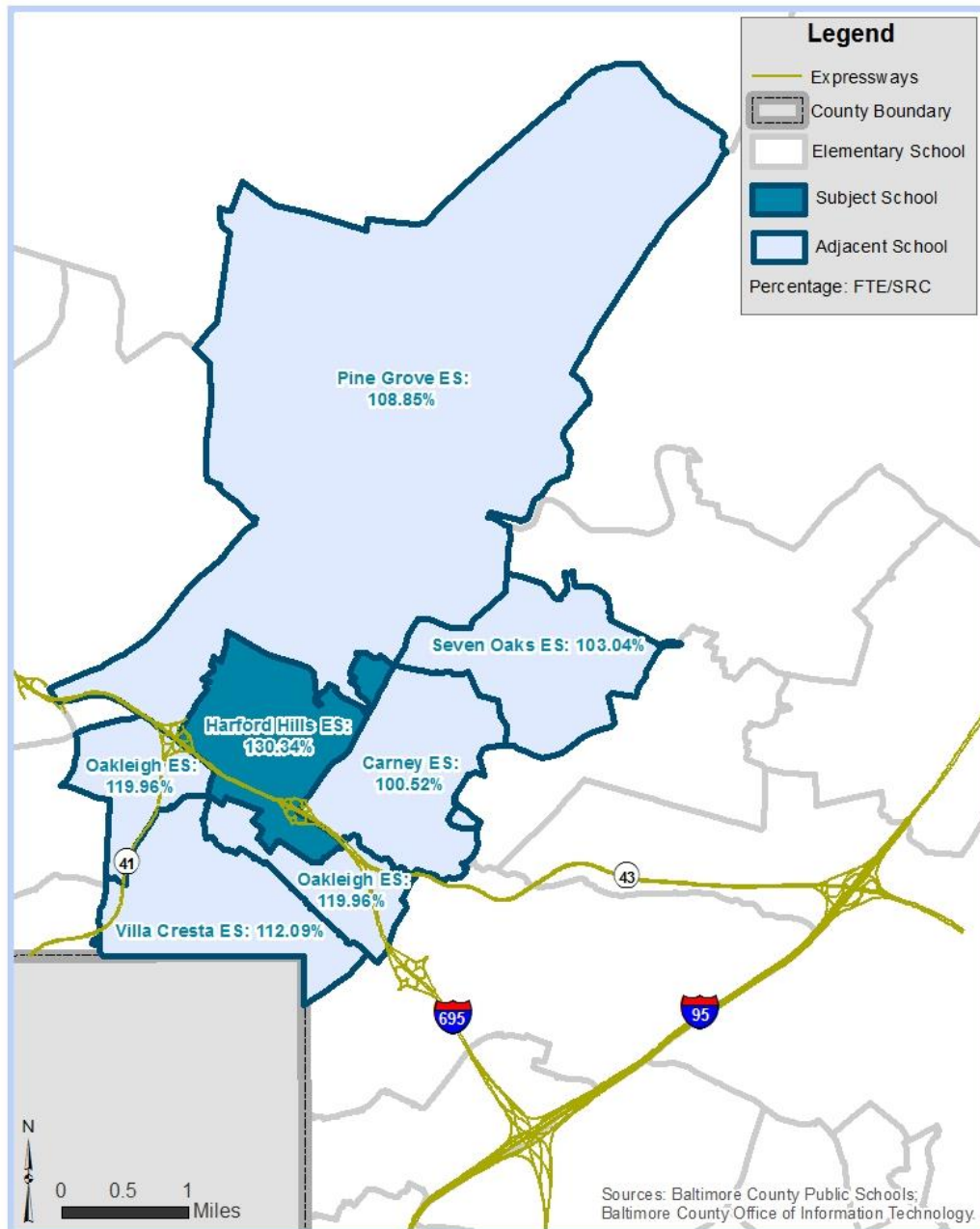
The Gunpowder Elementary School's enrollment of September 30, 2016 is 577. The State Rated Capacity (SRC) for this school is 499. Based on these numbers, Gunpowder Elementary School is 115.63% of SRC. A school impact analysis will be performed for each proposed development project to determine whether a school adjacent to Gunpowder Elementary School (see map above) is overcrowded under Section 32-6-103(f) of the Baltimore County Code. The County's \$1.3 billion Schools for Our Future capital program as outlined on page 39 will factor into the school impact analysis as required by Section 32-6-103(f).

Halethorpe Elementary School



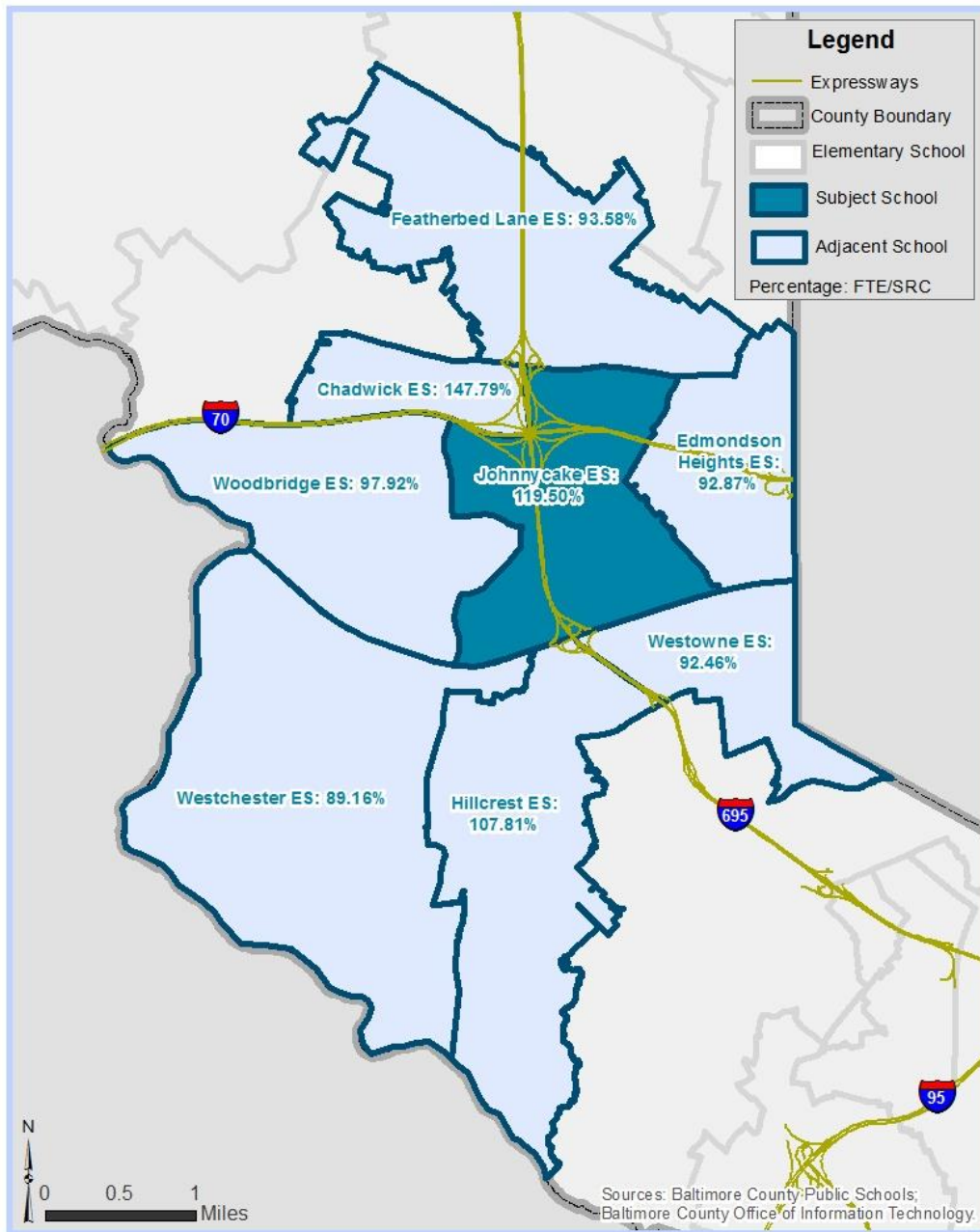
The Halethorpe Elementary School's enrollment of September 30, 2016 is 480. The State Rated Capacity (SRC) for this school is 392. Based on these numbers, Halethorpe Elementary School is 122.45% of SRC. A school impact analysis will be performed for each proposed development project to determine whether a school adjacent to Halethorpe Elementary School (see map above) is overcrowded under Section 32-6-103(f) of the Baltimore County Code. The County's \$1.3 billion Schools for Our Future capital program as outlined on page 39 will factor into the school impact analysis as required by Section 32-6-103(f).

Harford Hills Elementary School



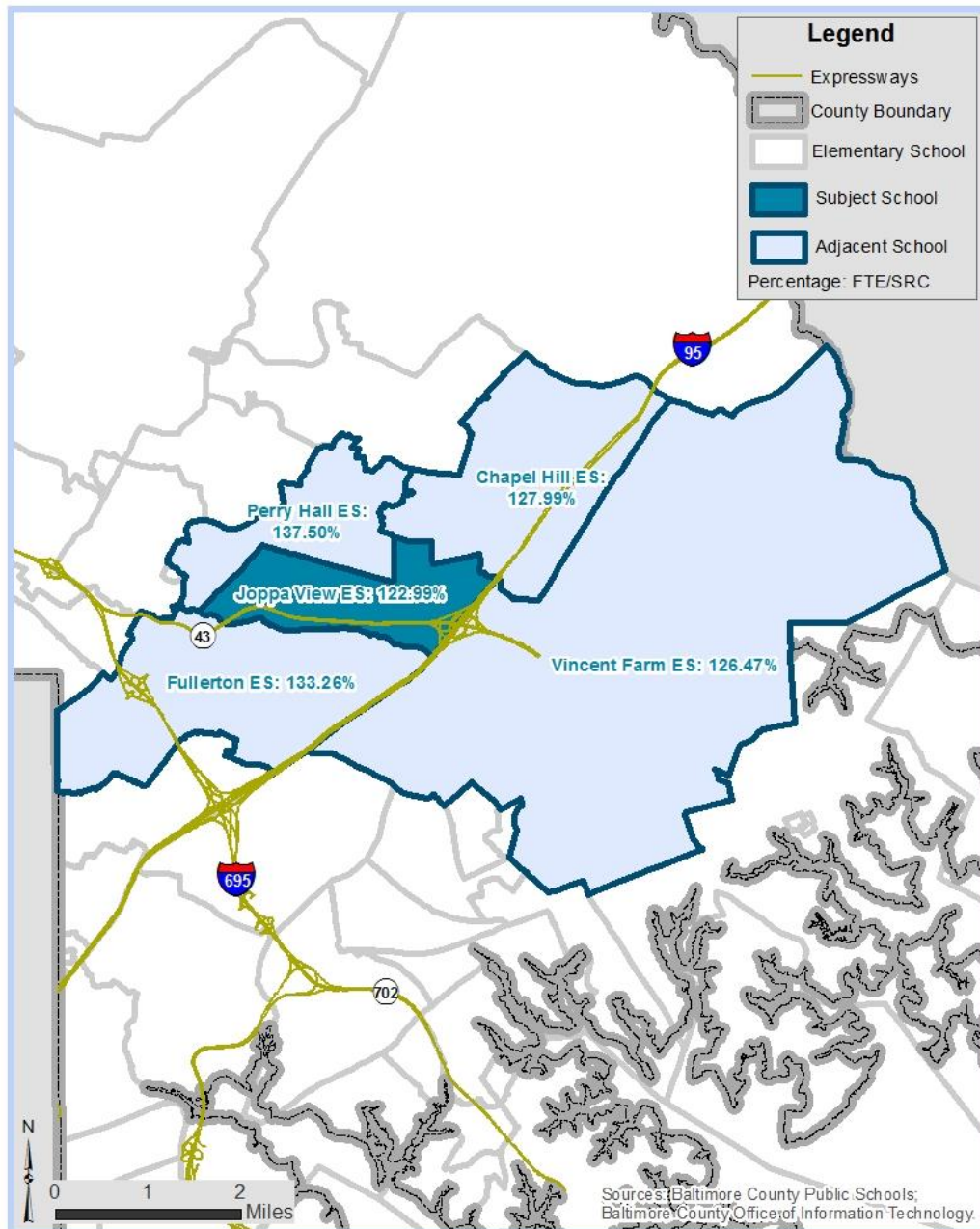
The Harford Hills Elementary School's enrollment of September 30, 2016 is 421. The State Rated Capacity (SRC) for this school is 323. Based on these numbers, Harford Hills Elementary School is 130.34% of SRC. A school impact analysis will be performed for each proposed development project to determine whether a school adjacent to Harford Hills Elementary School (see map above) is overcrowded under Section 32-6-103(f) of the Baltimore County Code. The County's \$1.3 billion Schools for Our Future capital program as outlined on page 39 will factor into the school impact analysis as required by Section 32-6-103(f).

Johnnycake Elementary School



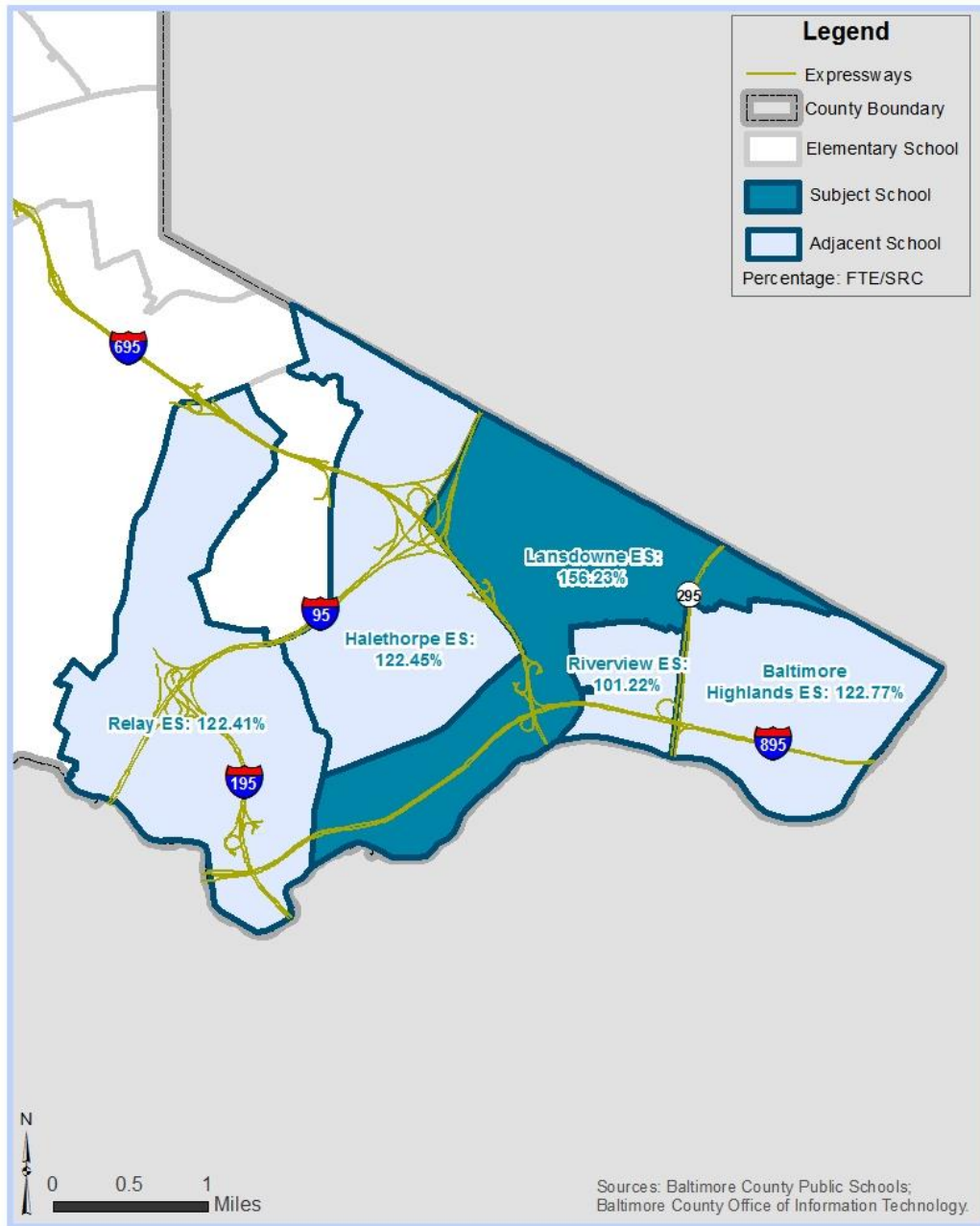
The Johnnycake Elementary School's enrollment of September 30, 2016 is 668. The State Rated Capacity (SRC) for this school is 559. Based on these numbers, Johnnycake Elementary School is 119.50% of SRC. A school impact analysis will be performed for each proposed development project to determine whether a school adjacent to Johnnycake Elementary School (see map above) is overcrowded under Section 32-6-103(f) of the Baltimore County Code. The County's \$1.3 billion Schools for Our Future capital program as outlined on page 39 will factor into the school impact analysis as required by Section 32-6-103(f).

Joppa View Elementary School



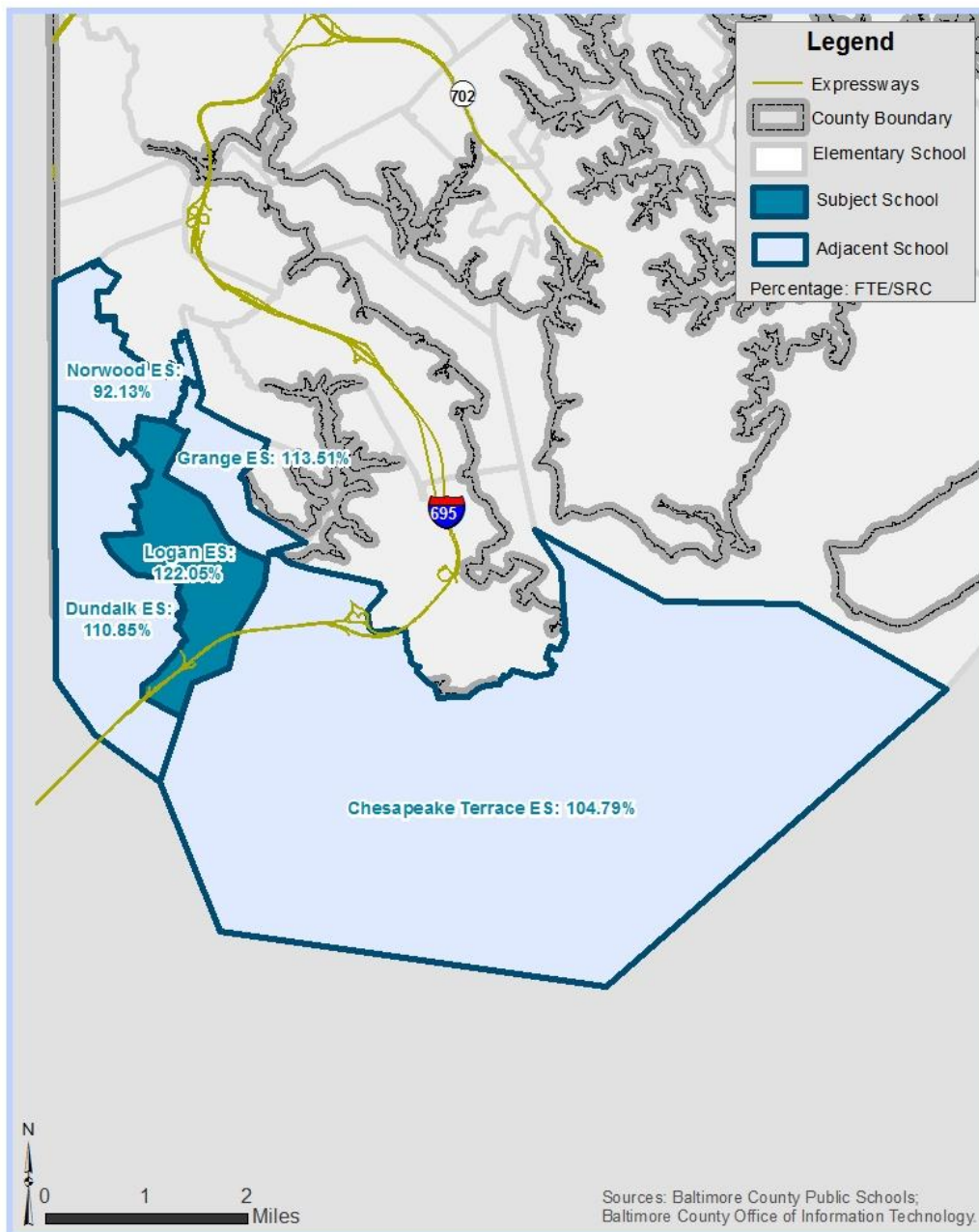
The Joppa View Elementary School's enrollment of September 30, 2016 is 781. The State Rated Capacity (SRC) for this school is 635. Based on these numbers, Joppa View Elementary School is 122.99% of SRC. A school impact analysis will be performed for each proposed development project to determine whether a school adjacent to Joppa View Elementary School (see map above) is overcrowded under Section 32-6-103(f) of the Baltimore County Code. The County's \$1.3 billion Schools for Our Future capital program as outlined on page 39 will factor into the school impact analysis as required by Section 32-6-103(f).

Lansdowne Elementary School



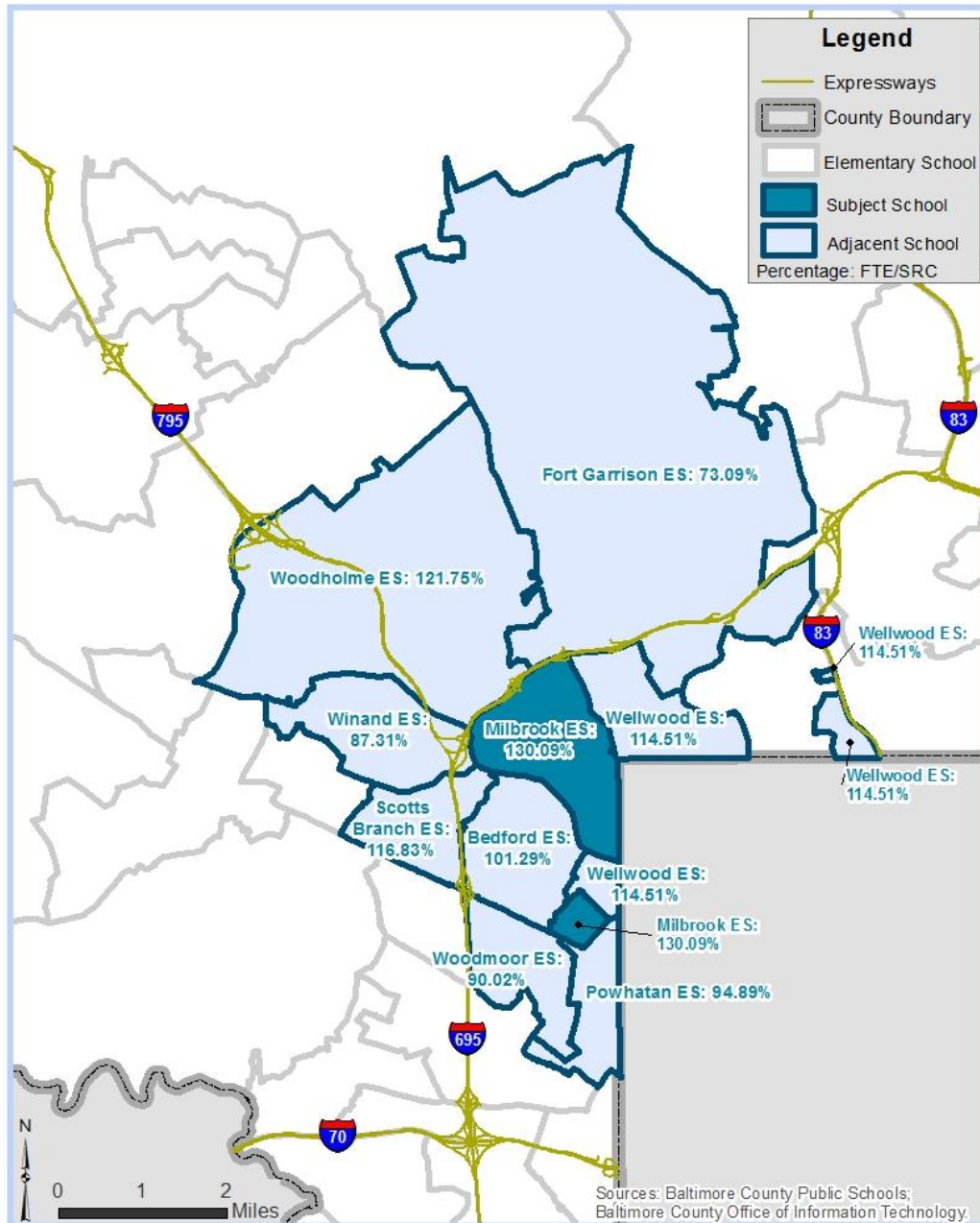
The Lansdowne Elementary School's enrollment of September 30, 2016 is 489. The State Rated Capacity (SRC) for this school is 313. Based on these numbers, Lansdowne Elementary School is 156.23% of SRC. A school impact analysis will be performed for each proposed development project to determine whether a school adjacent to Lansdowne Elementary School (see map above) is overcrowded under Section 32-6-103(f) of the Baltimore County Code. The County's \$1.3 billion Schools for Our Future capital program as outlined on page 39 will factor into the school impact analysis as required by Section 32-6-103(f).

Logan Elementary School



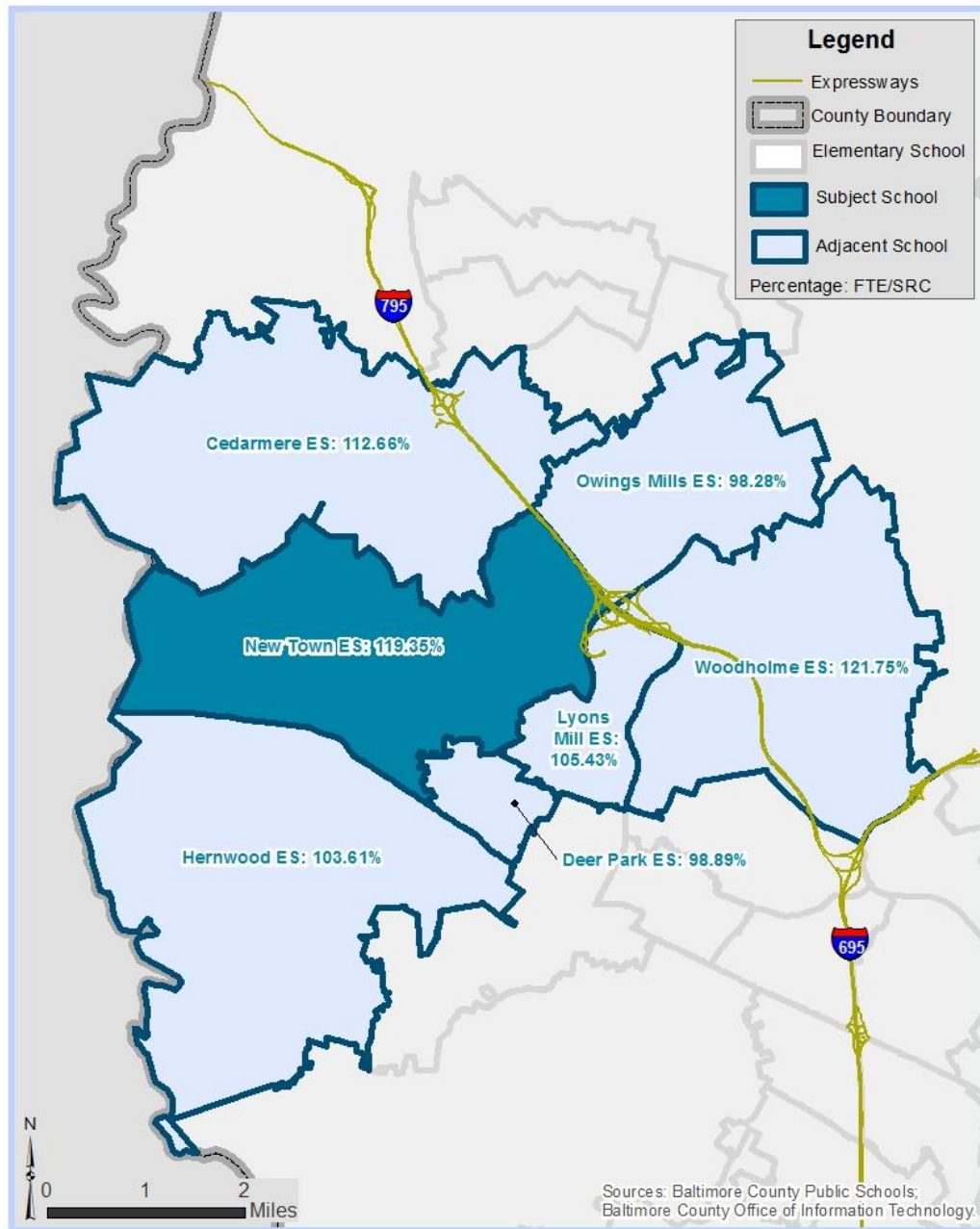
The Logan Elementary School's enrollment of September 30, 2016 is 631. The State Rated Capacity (SRC) for this school is 517. Based on these numbers, Logan Elementary School is 122.05% of SRC. A school impact analysis will be performed for each proposed development project to determine whether a school adjacent to Logan Elementary School (see map above) is overcrowded under Section 32-6-103(f) of the Baltimore County Code. The County's \$1.3 billion Schools for Our Future capital program as outlined on page 39 will factor into the school impact analysis as required by Section 32-6-103(f).

Milbrook Elementary School



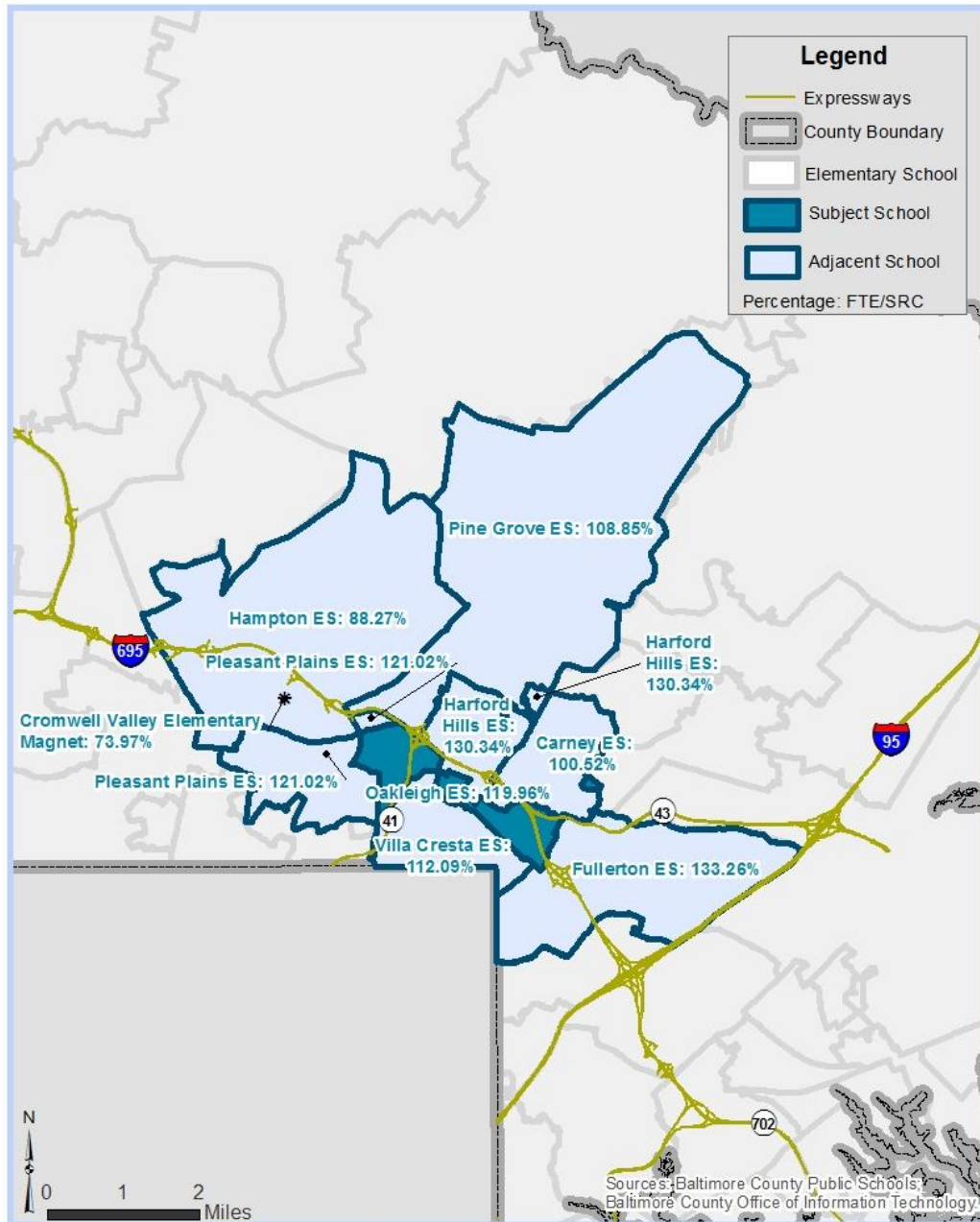
The Milbrook Elementary School’s enrollment of September 30, 2016 is 415. The State Rated Capacity (SRC) for this school is 319. Based on these numbers, Milbrook Elementary School is 130.09% of SRC. A school impact analysis will be performed for each proposed development project to determine whether a school adjacent to Milbrook Elementary School (see map above) is overcrowded under Section 32-6-103(f) of the Baltimore County Code. The County’s \$1.3 billion Schools for Our Future capital program as outlined on page 39 will factor into the school impact analysis as required by Section 32-6-103(f).

New Town Elementary School



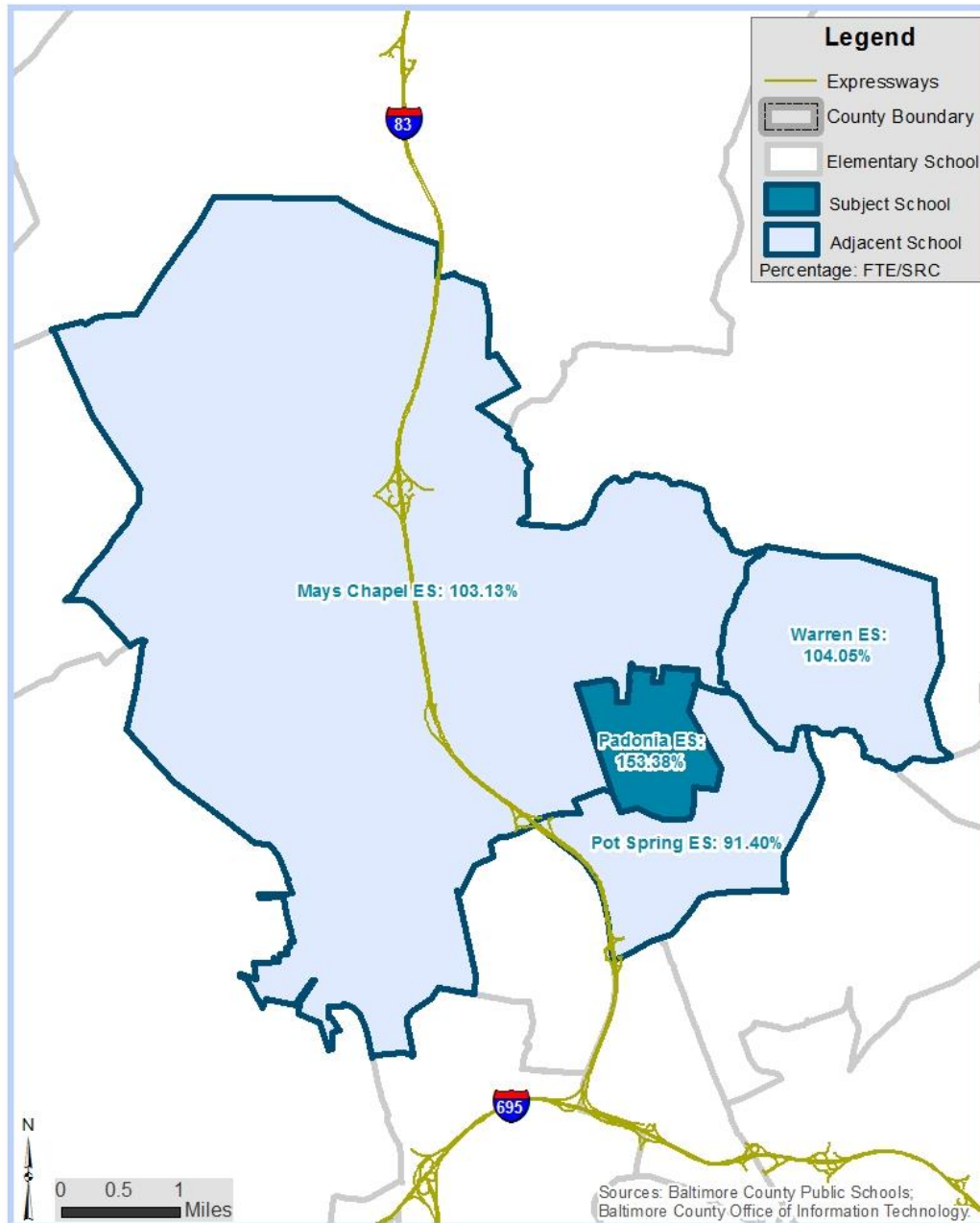
The New Town Elementary School's enrollment of September 30, 2016 is 839. The State Rated Capacity (SRC) for this school is 703. Based on these numbers, New Town Elementary School is 119.35% of SRC. A school impact analysis will be performed for each proposed development project to determine whether a school adjacent to New Town Elementary School (see map above) is overcrowded under Section 32-6-103(f) of the Baltimore County Code. The County's \$1.3 billion Schools for Our Future capital program as outlined on page 39 will factor into the school impact analysis as required by Section 32-6-103(f).

Oakleigh Elementary School



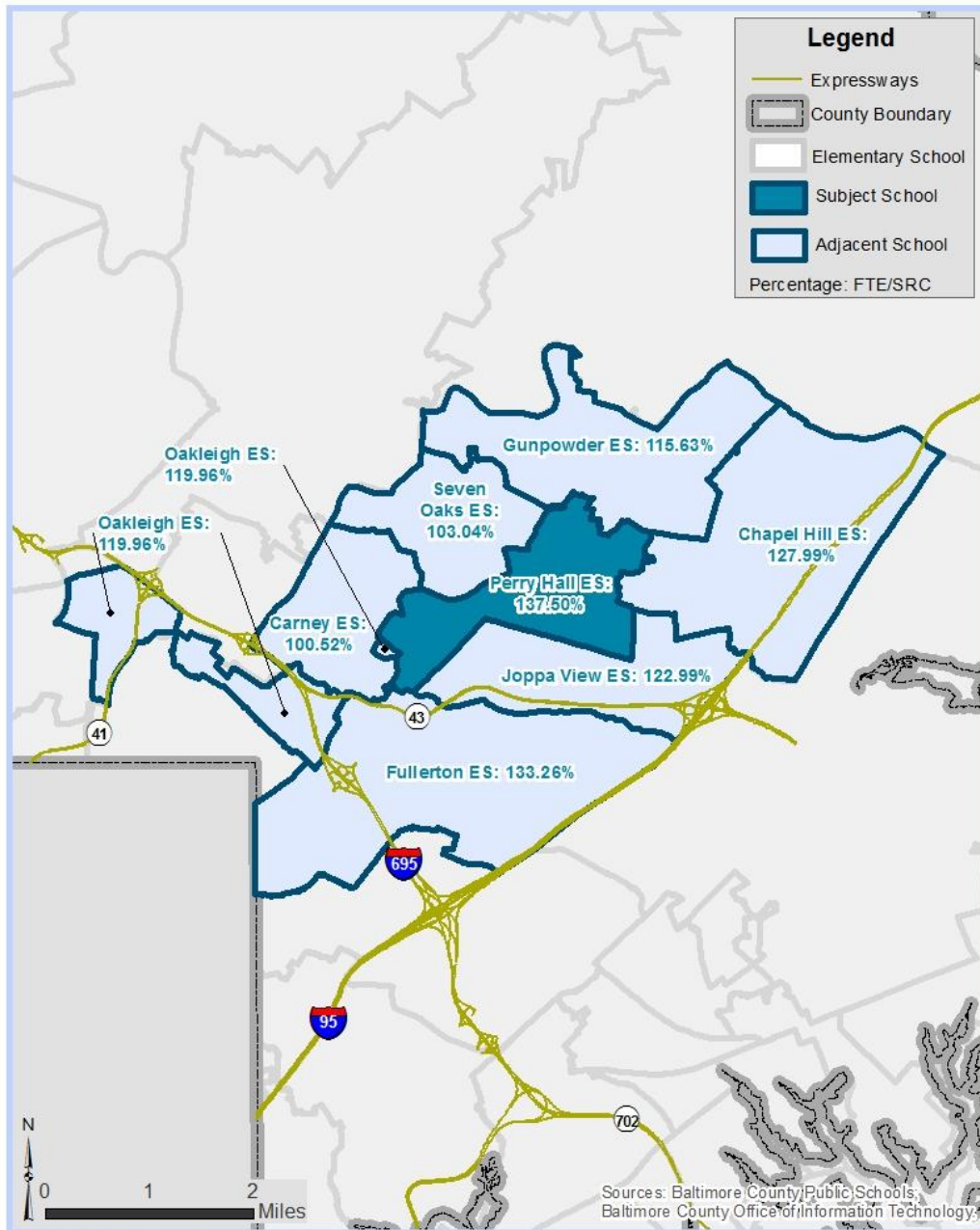
The Oakleigh Elementary School's enrollment of September 30, 2016 is 595. The State Rated Capacity (SRC) for this school is 496. Based on these numbers, Oakleigh Elementary School is 119.96% of SRC. A school impact analysis will be performed for each proposed development project to determine whether a school adjacent to Oakleigh Elementary School (see map above) is overcrowded under Section 32-6-103(f) of the Baltimore County Code. The County's \$1.3 billion Schools for Our Future capital program as outlined on page 39 will factor into the school impact analysis as required by Section 32-6-103(f).

Padonia Elementary School



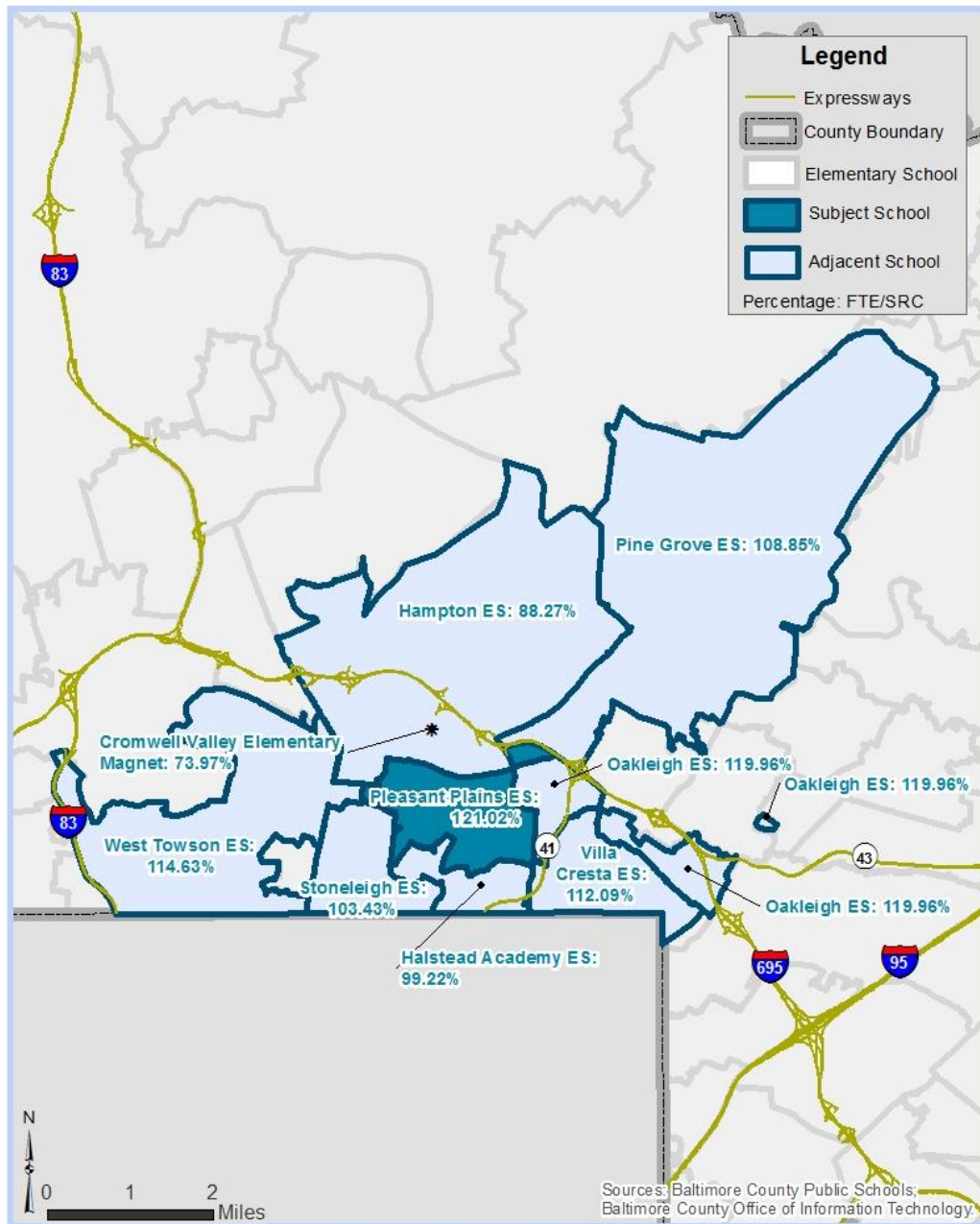
The Padonia Elementary School's enrollment of September 30, 2016 is 477. The State Rated Capacity (SRC) for this school is 311. Based on these numbers, Padonia Elementary School is 153.38% of SRC. A school impact analysis will be performed for each proposed development project to determine whether a school adjacent to Padonia Elementary School is overcrowded under Section 32-6-103(f) of the Baltimore County Code. The County's \$1.3 billion Schools for Our Future capital program as outlined on page 39 will factor into the school impact analysis as required by Section 32-6-103(f).

Perry Hall Elementary School



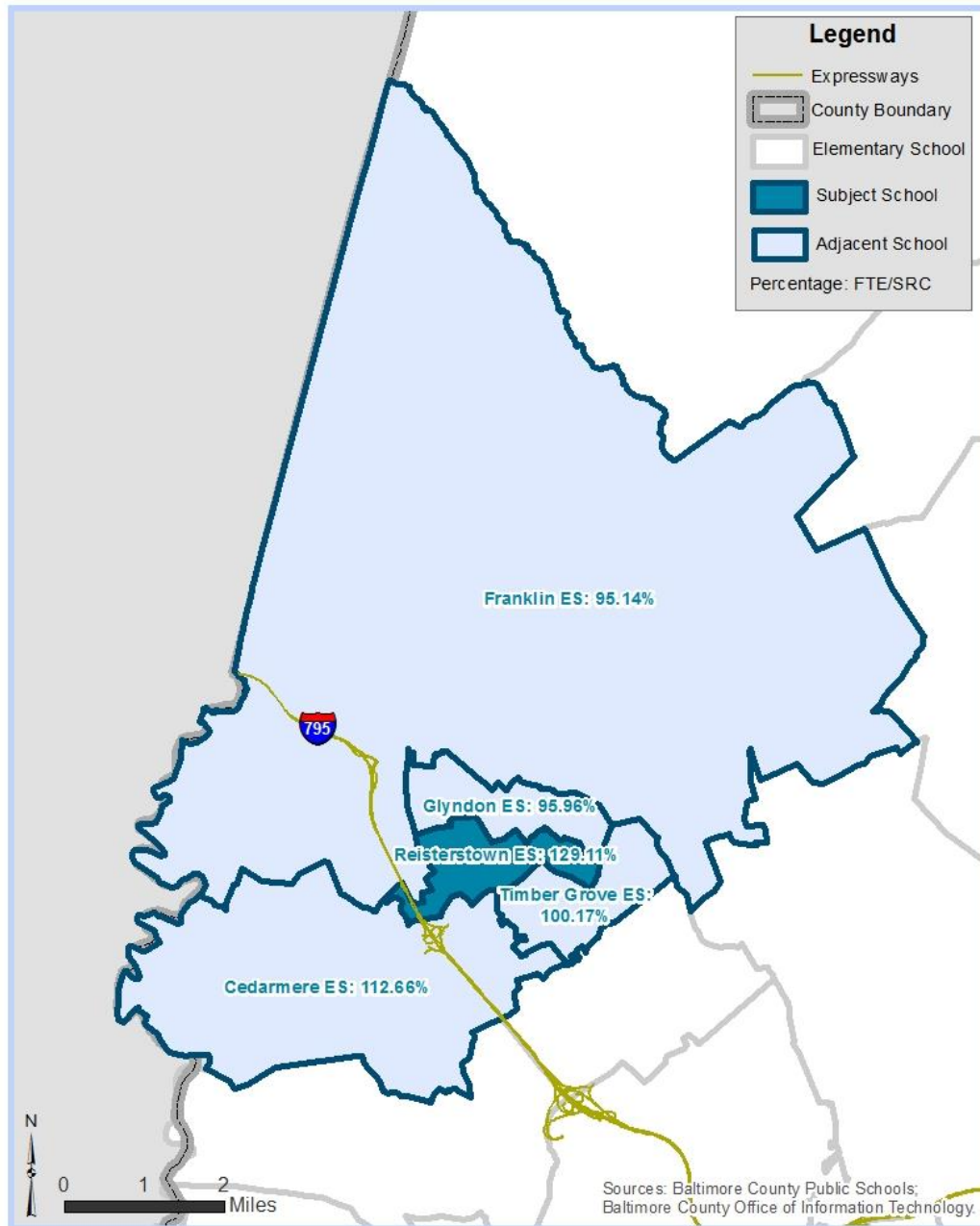
The Perry Hall Elementary School's enrollment of September 30, 2016 is 726. The State Rated Capacity (SRC) for this school is 528. Based on these numbers, Perry Hall Elementary School is 137.50% of SRC. A school impact analysis will be performed for each proposed development project to determine whether a school adjacent to Perry Hall Elementary School (see map above) is overcrowded under Section 32-6-103(f) of the Baltimore County Code. The County's \$1.3 billion Schools for Our Future capital program as outlined on page 39 will factor into the school impact analysis as required by Section 32-6-103(f).

Pleasant Plains Elementary School



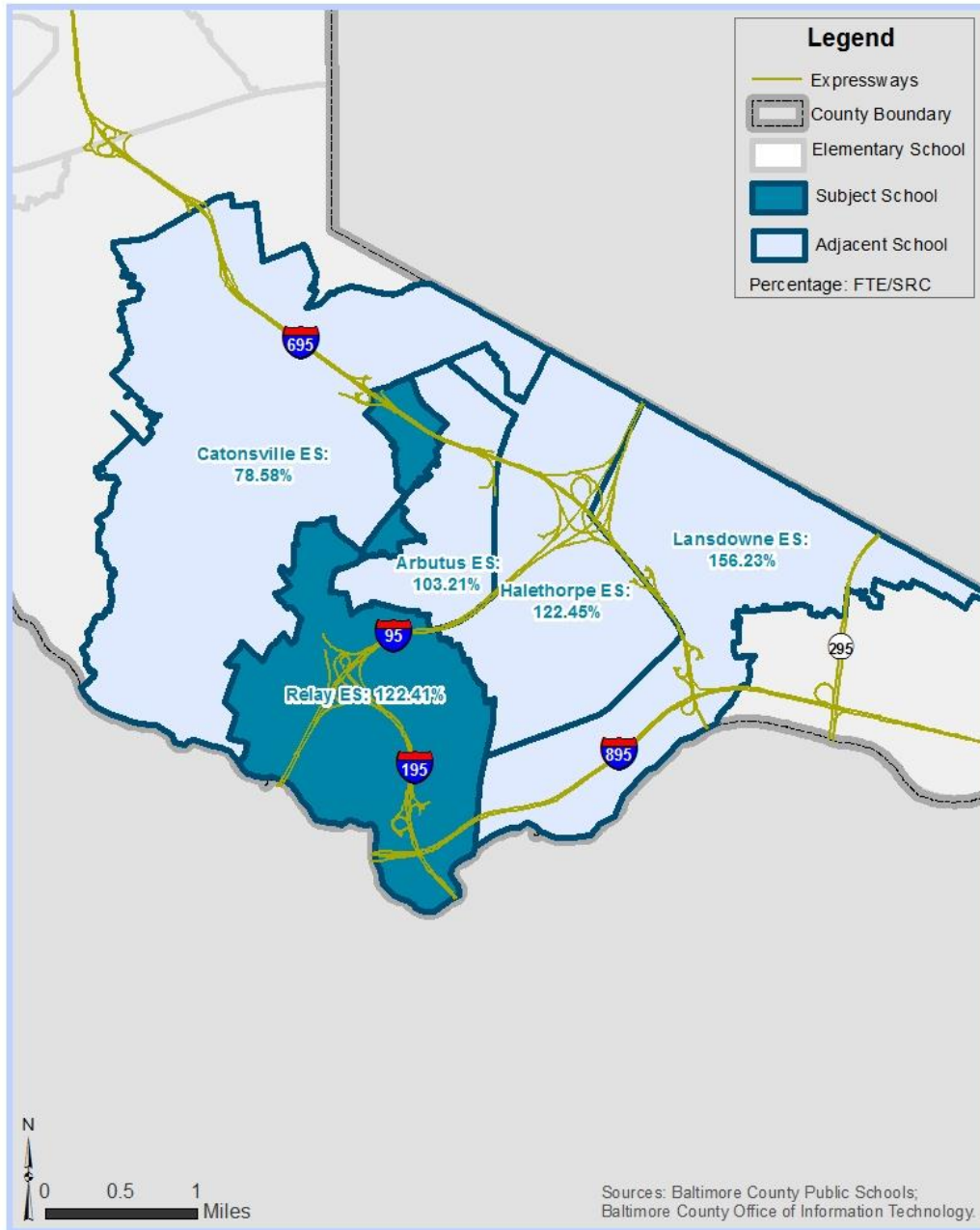
The Pleasant Plains Elementary School's enrollment of September 30, 2016 is 616. The State Rated Capacity (SRC) for this school is 509. Based on these numbers, Pleasant Plains Elementary School is 121.02% of SRC. A school impact analysis will be performed for each proposed development project to determine whether a school adjacent to Pleasant Plains Elementary School (see map above) is overcrowded under Section 32-6-103(f) of the Baltimore County Code. The County's \$1.3 billion Schools for Our Future capital program as outlined on page 39 will factor into the school impact analysis as required by Section 32-6-103(f).

Reisterstown Elementary School



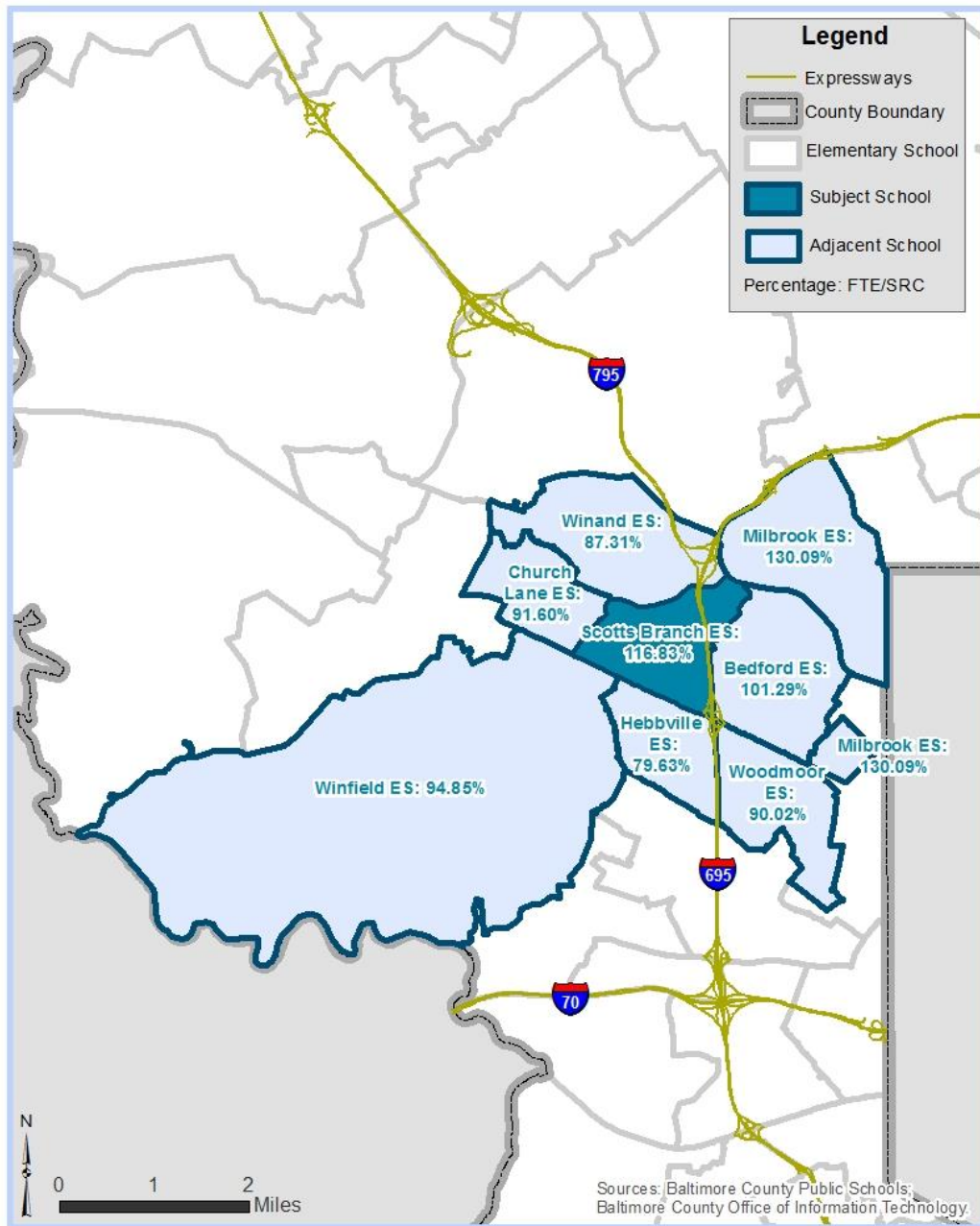
The Reisterstown Elementary School's enrollment of September 30, 2016 is 581. The State Rated Capacity (SRC) for this school is 450. Based on these numbers, Reisterstown Elementary School is 129.11% of SRC. A school impact analysis will be performed for each proposed development project to determine whether a school adjacent to Reisterstown Elementary School (see map above) is overcrowded under Section 32-6-103(f) of the Baltimore County Code. The County's \$1.3 billion Schools for Our Future capital program as outlined on page 39 will factor into the school impact analysis as required by Section 32-6-103(f).

Relay Elementary School



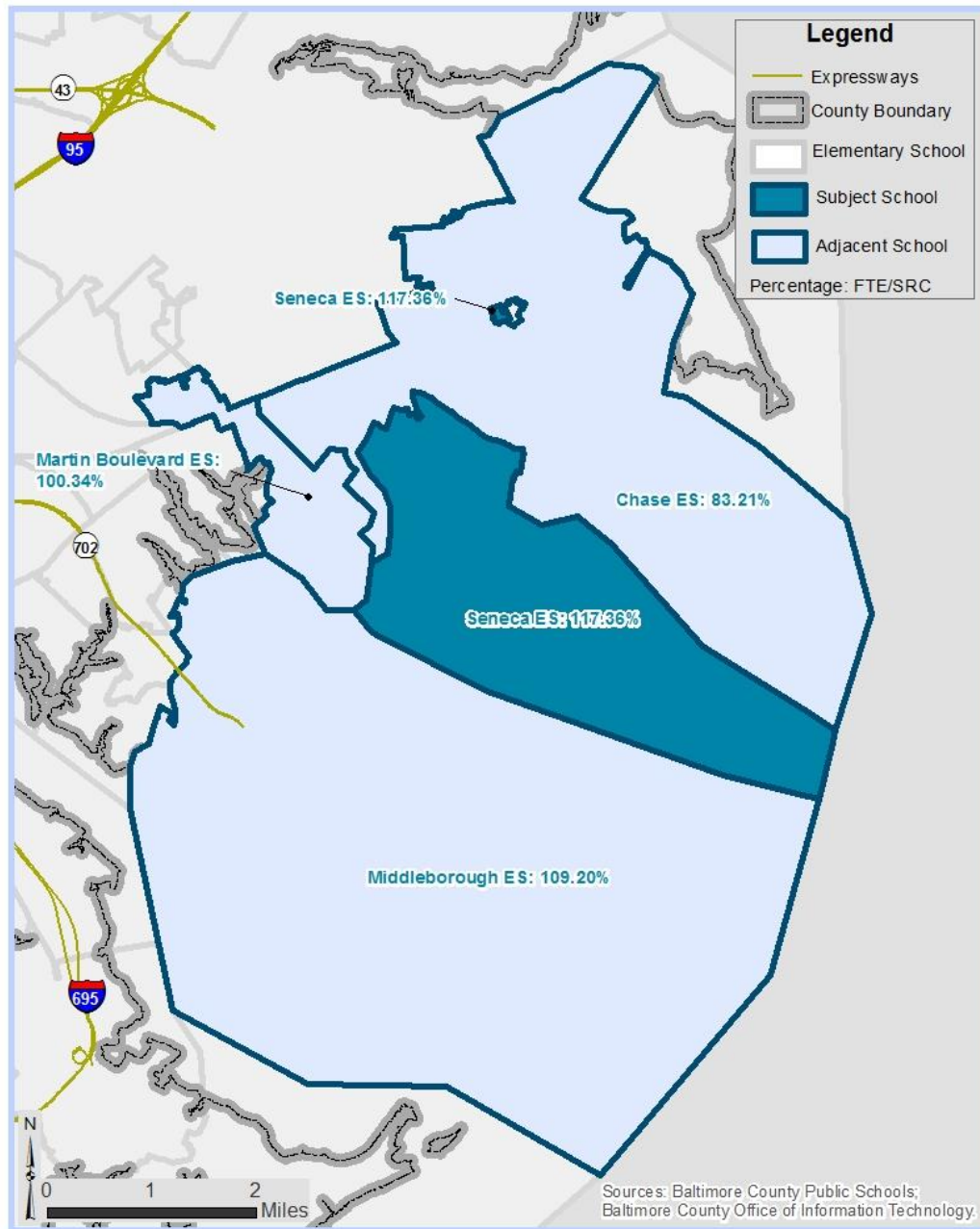
The Relay Elementary School's enrollment of September 30, 2016 is 508. The State Rated Capacity (SRC) for this school is 415. Based on these numbers, Relay Elementary School is 122.41% of SRC. A school impact analysis will be performed for each proposed development project to determine whether a school adjacent to Relay Elementary School (see map above) is overcrowded under Section 32-6-103(f) of the Baltimore County Code. The County's \$1.3 billion Schools for Our Future capital program as outlined on page 39 will factor into the school impact analysis as required by Section 32-6-103(f).

Scotts Branch Elementary School



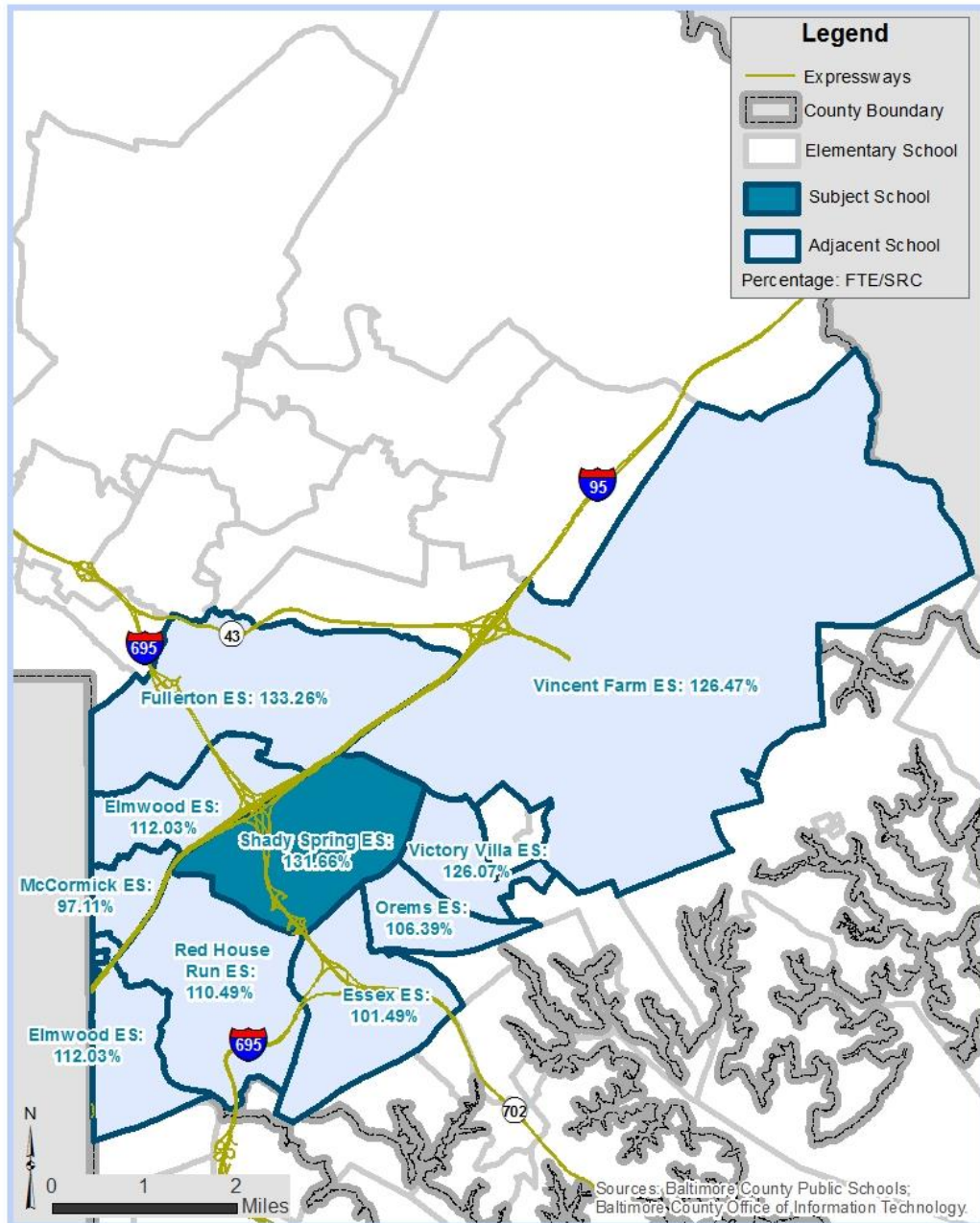
The Scotts Branch Elementary School's enrollment of September 30, 2016 is 597. The State Rated Capacity (SRC) for this school is 511. Based on these numbers, Scotts Branch Elementary School is 116.83% of SRC. A school impact analysis will be performed for each proposed development project to determine whether a school adjacent to Scotts Branch Elementary School (see map above) is overcrowded under Section 32-6-103(f) of the Baltimore County Code. The County's \$1.3 billion Schools for Our Future capital program as outlined on page 39 will factor into the school impact analysis as required by Section 32-6-103(f).

Seneca Elementary School



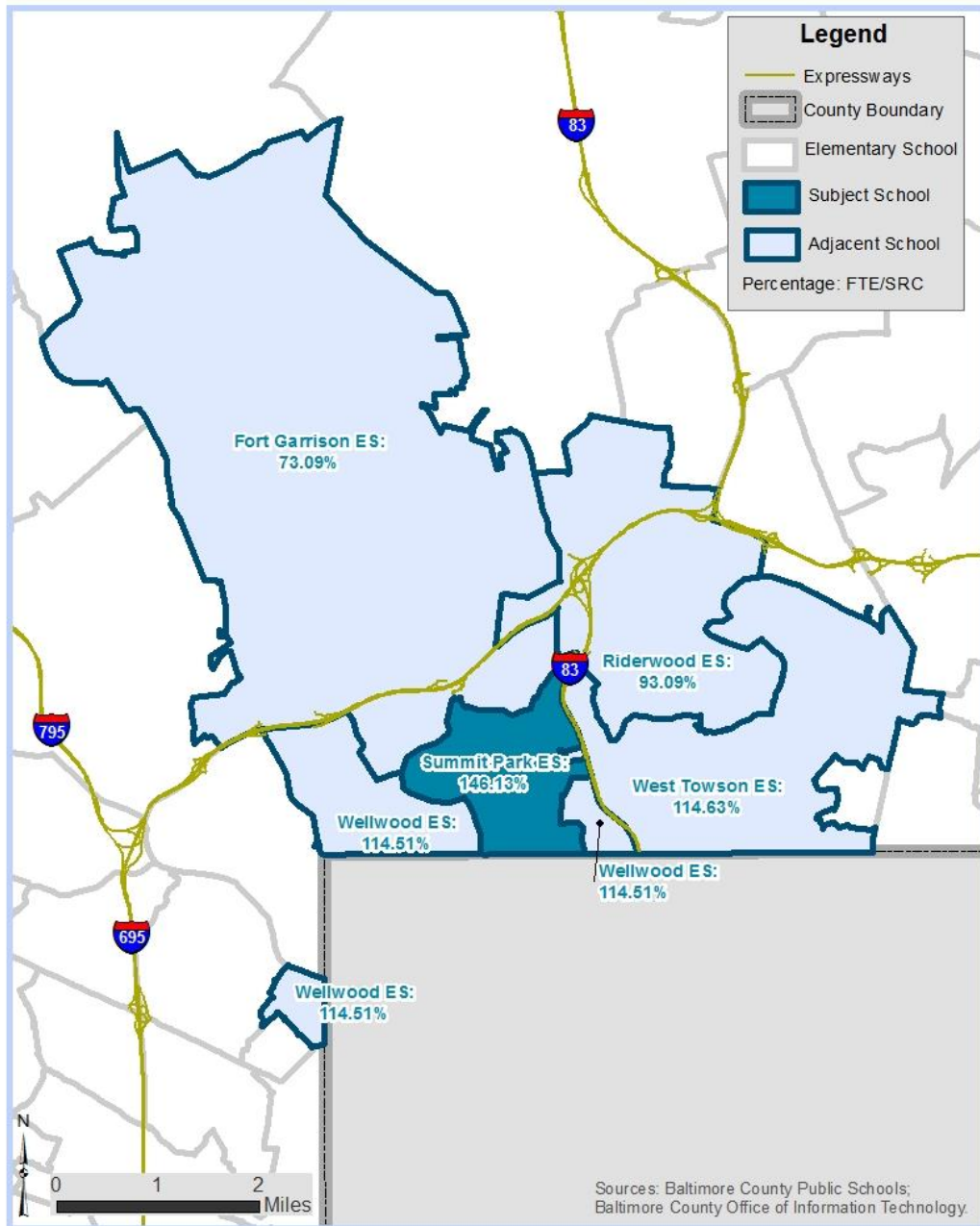
The Seneca Elementary School's enrollment of September 30, 2016 is 480. The State Rated Capacity (SRC) for this school is 409. Based on these numbers, Seneca Elementary School is 117.36% of SRC. A school impact analysis will be performed for each proposed development project to determine whether a school adjacent to Seneca Elementary School (see map above) is overcrowded under Section 32-6-103(f) of the Baltimore County Code. The County's \$1.3 billion Schools for Our Future capital program as outlined on page 39 will factor into the school impact analysis as required by Section 32-6-103(f).

Shady Spring Elementary School



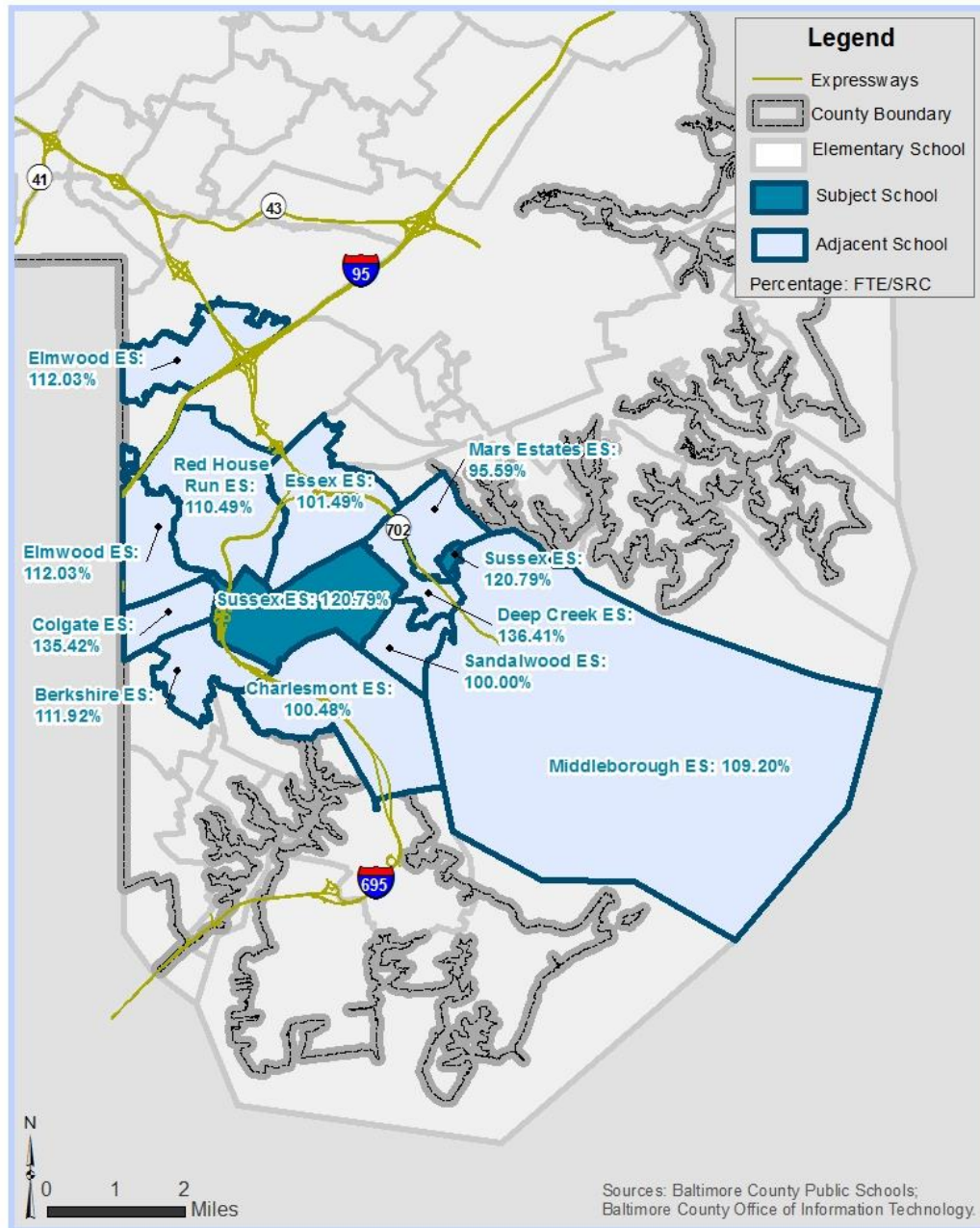
The Shady Spring Elementary School’s enrollment of September 30, 2016 is 657. The State Rated Capacity (SRC) for this school is 499. Based on these numbers, Shady Spring Elementary School is 131.66% of SRC. A school impact analysis will be performed for each proposed development project to determine whether a school adjacent to Shady Spring Elementary School (see map above) is overcrowded under Section 32-6-103(f) of the Baltimore County Code. The County’s \$1.3 billion Schools for Our Future capital program as outlined on page 39 will factor into the school impact analysis as required by Section 32-6-103(f).

Summit Park Elementary School



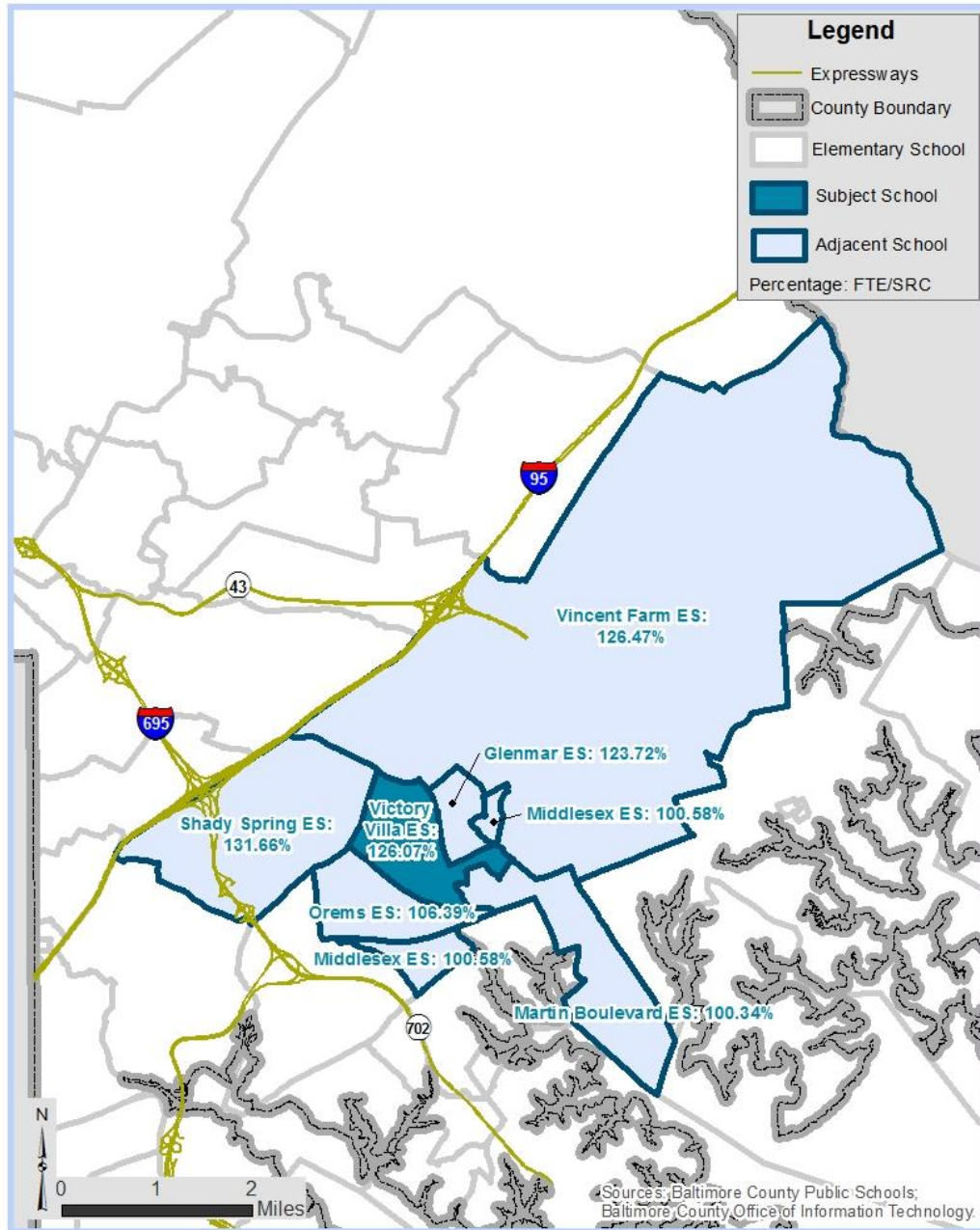
The Summit Park Elementary School's enrollment of September 30, 2016 is 491. The State Rated Capacity (SRC) for this school is 336. Based on these numbers, Summit Park Elementary School is 146.13% of SRC. A school impact analysis will be performed for each proposed development project to determine whether a school adjacent to Summit Park Elementary School (see map above) is overcrowded under Section 32-6-103(f) of the Baltimore County Code. The County's \$1.3 billion Schools for Our Future capital program as outlined on page 39 will factor into the school impact analysis as required by Section 32-6-103(f).

Sussex Elementary School



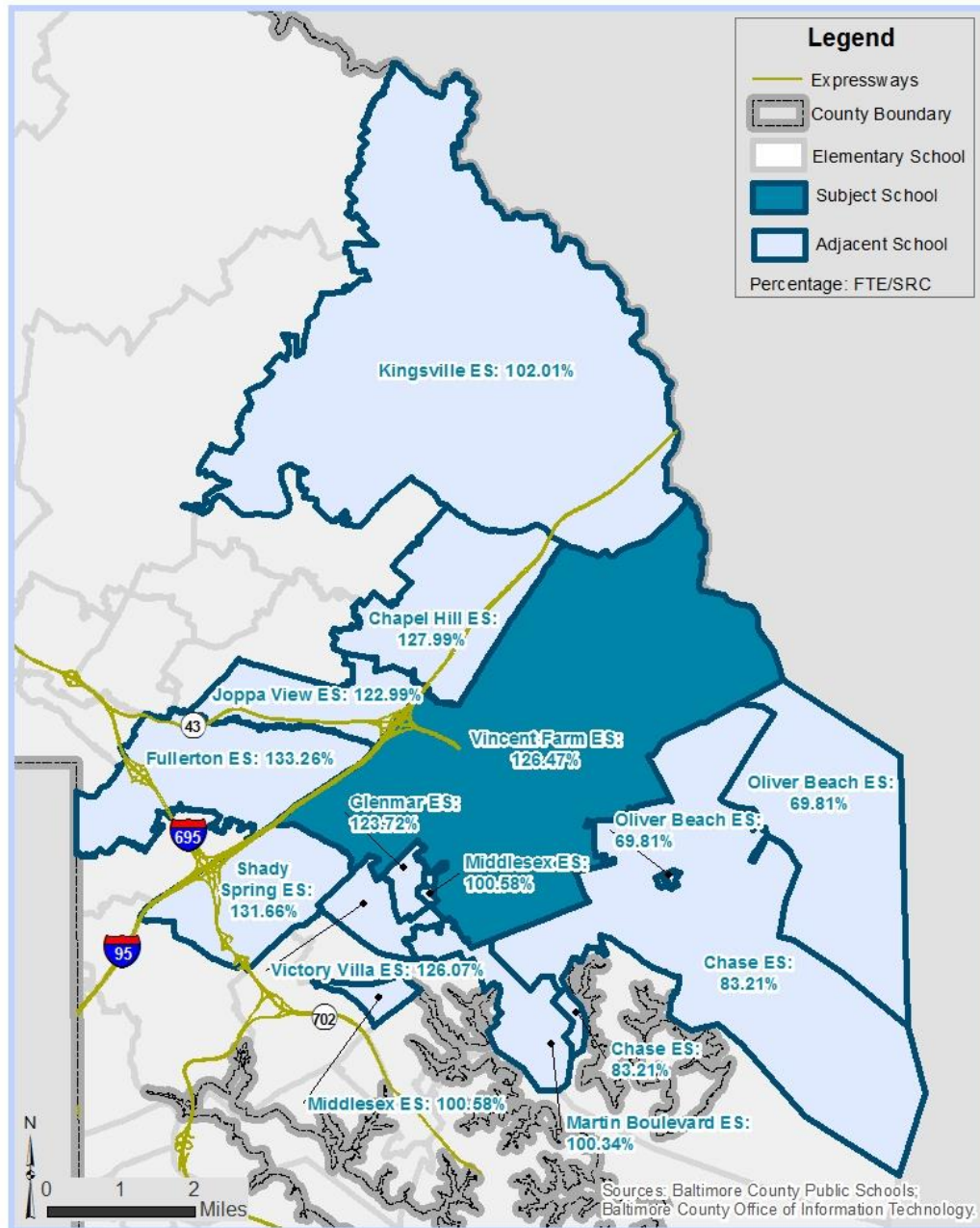
The Sussex Elementary School's enrollment of September 30, 2016 is 459. The State Rated Capacity (SRC) for this school is 380. Based on these numbers, Sussex Elementary School is 120.79% of SRC. A school impact analysis will be performed for each proposed development project to determine whether a school adjacent to Sussex Elementary School (see map above) is overcrowded under Section 32-6-103(f) of the Baltimore County Code. The County's \$1.3 billion Schools for Our Future capital program as outlined on page 39 will factor into the school impact analysis as required by Section 32-6-103(f).

Victory Villa Elementary School



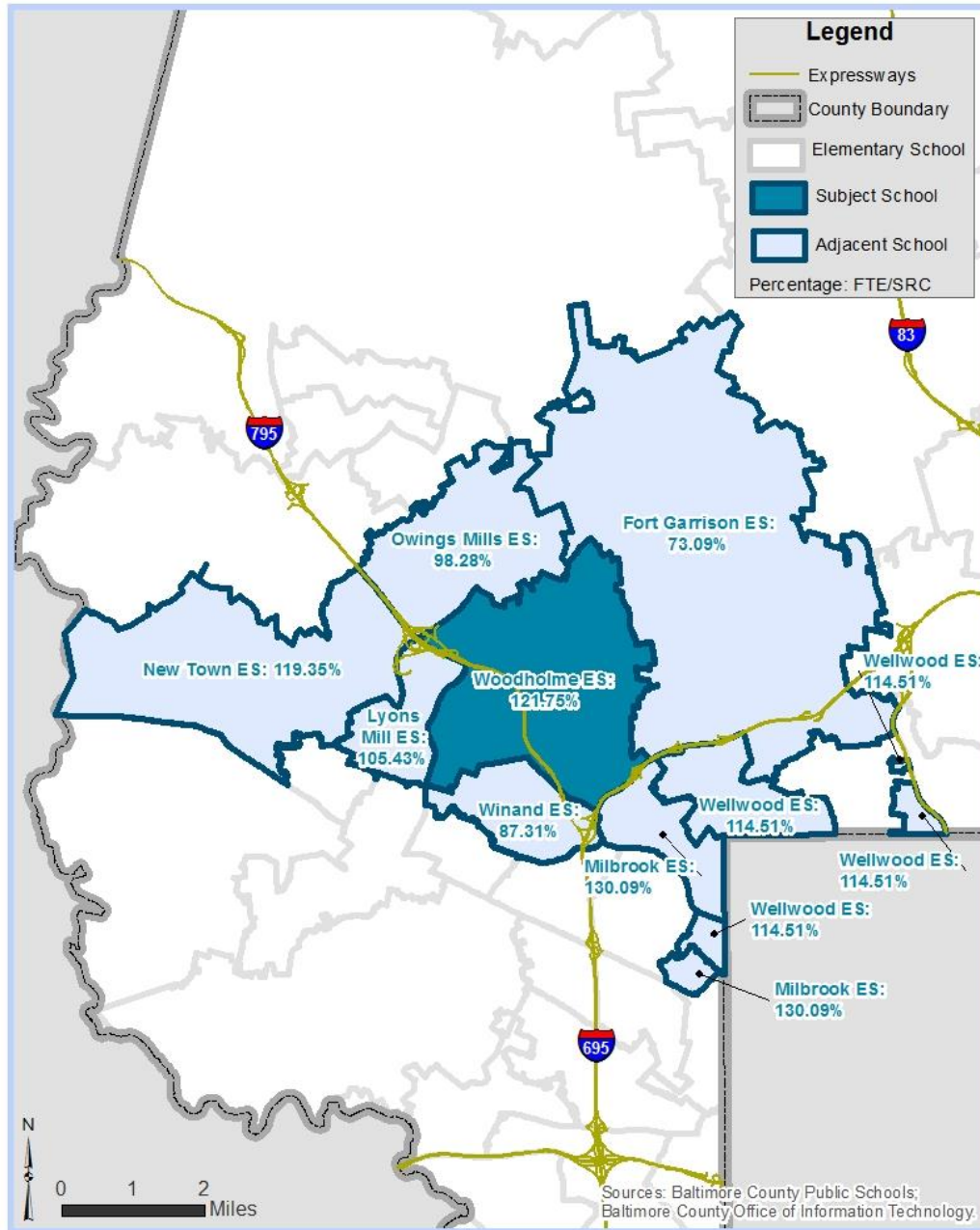
The Victory Villa Elementary School's enrollment of September 30, 2016 is 411. The State Rated Capacity (SRC) for this school is 326. Based on these numbers, Victory Villa Elementary School is 126.07% of SRC. A school impact analysis will be performed for each proposed development project to determine whether a school adjacent to Victory Villa Elementary School (see map above) is overcrowded under Section 32-6-103(f) of the Baltimore County Code. The County's \$1.3 billion Schools for Our Future capital program as outlined on page 39 will factor into the school impact analysis as required by Section 32-6-103(f).

Vincent Farm Elementary School



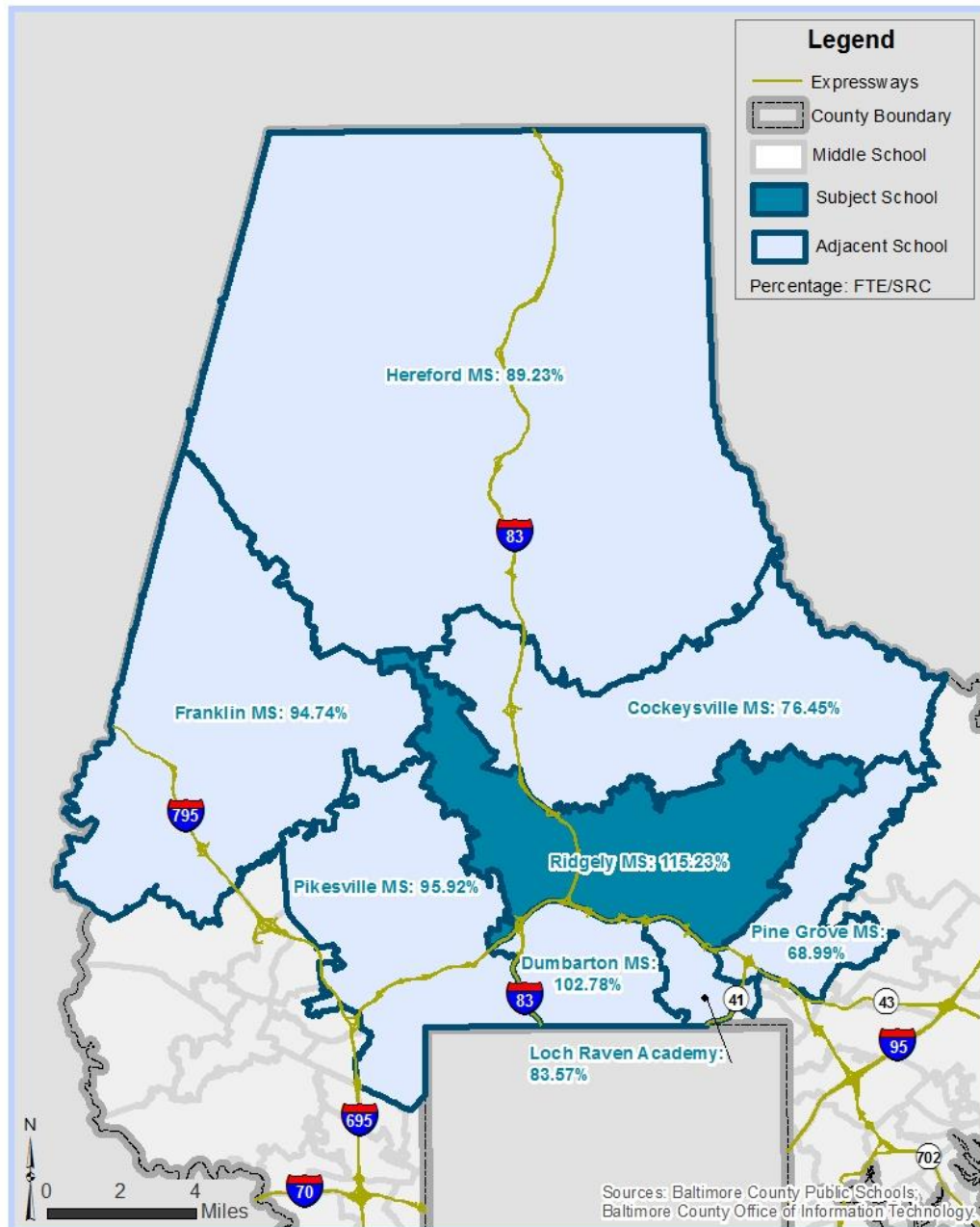
The Vincent Farm Elementary School’s enrollment of September 30, 2016 is 884. The State Rated Capacity (SRC) for this school is 699. Based on these numbers, Vincent Farm Elementary School is 126.47% of SRC. A school impact analysis will be performed for each proposed development project to determine whether a school adjacent to Vincent Farm Elementary School (see map above) is overcrowded under Section 32-6-103(f) of the Baltimore County Code. The County’s \$1.3 billion Schools for Our Future capital program as outlined on page 39 will factor into the school impact analysis as required by Section 32-6-103(f).

Woodholme Elementary School



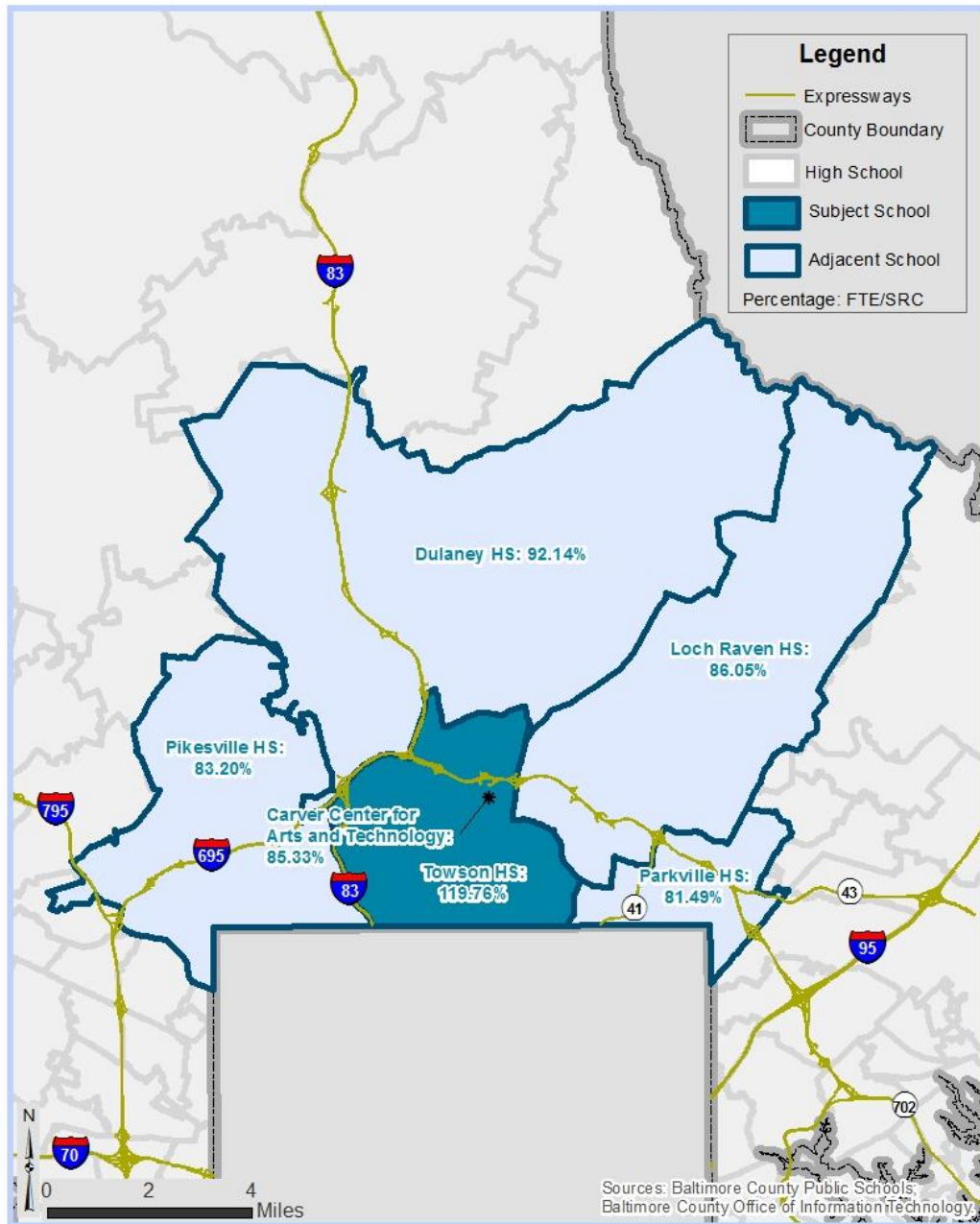
The Woodholme Elementary School’s enrollment of September 30, 2016 is 823. The State Rated Capacity (SRC) for this school is 676. Based on these numbers, Woodholme Elementary School is 121.75% of SRC. A school impact analysis will be performed for each proposed development project to determine whether a school adjacent to Woodholme Elementary School (see map above) is overcrowded under Section 32-6-103(f) of the Baltimore County Code. The County’s \$1.3 billion Schools for Our Future capital program as outlined on page 39 will factor into the school impact analysis as required by Section 32-6-103(f).

Ridgely Middle School



The Ridgely Middle School's enrollment of September 30, 2016 is 1,233. The State Rated Capacity (SRC) for this school is 1,070. Based on these numbers, Ridgely Middle School is 115.23% of SRC. A school impact analysis will be performed for each proposed development project to determine whether a school adjacent to Ridgely Middle School (see map above) is overcrowded under Section 32-6-103(f) of the Baltimore County Code.

Towson High School



The Towson High School's enrollment of September 30, 2016 is 1,509. The State Rated Capacity (SRC) for Towson High School is 1,260. Based on these numbers, Towson High School is 119.76% of SRC. A school impact analysis will be performed for each proposed development project to determine whether a school adjacent to Towson High School (see map above) is overcrowded under Section 32-6-103(f) of the Baltimore County Code. The County's \$1.3 billion Schools for Our Future capital program as outlined on page 39 will factor into the school impact analysis as required by Section 32-6-103(f).

Appendix: Schools for Our Future

Schools for Our Future Program

New Schools:					
Area	School	Seats Construct	Net New Seats	County FY Funding	Estimated Completion
SW	Catonsville ES (Bloomsbury)	705	300	FY15/16	AUG 2016
SW	*Relay ES	700	285	FY15/16	AUG 2017
SW	*Westowne ES	650	170	FY15/16	AUG 2016
SW	*Lansdowne ES	735	422	FY16/17	AUG 2018
SW	*Chadwick ES	700	292	FY18	AUG 2020
NW	Lyons Mill ES	681	681	FY13/14	AUG 2015
NW	*Summit Park ES	700	364	FY18/20	AUG 2021
NW	*Bedford ES	700	391	FY18/20	AUG 2021
C	Mays Chapel ES	702	702	FY12	AUG 2014
NE	*Victory Villa ES	735	409	FY16/17	AUG 2018
NE	Joppa Road Site	700	700	FY16/17	AUG 2018
NE	Ridge Road Site	700	700	FY18/20	AUG 2020
NE	Nottingham Site	1,500	1,500	FY18/20	AUG 2021
SE	*Berkshire ES	600	172	FY18/20	AUG 2020
SE	*Colgate ES	500	181	FY18/20	AUG 2020
SE	*Dundalk ES	700	110	FY18	AUG 2019
Subtotal		11,708	7,379		

* Schools to be demolished upon replacement for improved operating efficiency and energy savings.

Additions:					
Area	School	Seats Construct	Net New Seats	County FY Funding	Estimated Completion
SW	Westchester ES	193	193	FY15/16	AUG 2016
NW	Scotts Branch ES	189	189	FY20	AUG 2021
NW	Fort Garrison ES	269	269	FY20	AUG 2021
NW	Deer Park ES	249	249	FY20	AUG 2021
NW	Pikesville HS	13	13	FY14/15/16	AUG 2016
C	Sparks ES	194	194	FY14	AUG 2015
C	Stoneleigh ES	200	200	FY12/13	AUG 2013
C	Hampton ES	200	200	FY12	AUG 2013
C	Hereford HS	318	318	FY12/13	AUG 2015
C	Padonia International ES	264	264	FY15	AUG 2018
NE	Red House Run ES	214	214	FY20	AUG 2021
NE	Pine Grove ES	300	300	FY18/20	AUG 2021
Subtotal		2,603	2,603		

Source: Fiscal Year 2018 Budget Message , Baltimore County Executive Kevin Kamenetz, April 13, 2017.