

2013 – 2014 School Adequate Public Facilities Ordinance Report and Maps



**Baltimore County Department of Planning
December 2013**

Report Summary

Section 32-6-103(f) of the Baltimore County Code requires that the Department of Planning furnish the School Adequate Public Facilities Ordinance Report and Maps using September 30, 2013 school enrollment data, indicating overcrowded school districts in accordance with parameters in the referenced County Code.

School system capacities based on the full time equivalent (FTE) enrollments of September 30, 2013 and current school year's state rated capacity (SRC) are presented for all the elementary, middle, and high schools in the first section of this report. The second section reviews schools that are over 115% of the SRC.

In the 2013-2014 school year, full time equivalent (FTE) enrollments of twenty-eight (28) elementary schools are at or over 115% of the 2013-2014 State Rated Capacity (SRC). The FTEs for all the middle and high schools are under 115% of SRC. A school impact analysis will be performed for each proposed development project to determine whether an adjacent school district is overcrowded under Section 32-6-103(f) of the Baltimore County Code. The Appendix section displays each of those 28 schools and its adjacent schools.

Table of Contents

<i>September 30, 2013 Systemwide Capacities</i>	2
<i>Chadwick Elementary School</i>	7
<i>Chapel Hill Elementary School</i>	8
<i>Dundalk Elementary School</i>	9
<i>Elmwood Elementary School</i>	10
<i>Fullerton Elementary School</i>	11
<i>Halethorpe Elementary School</i>	12
<i>Harford Hills Elementary School</i>	13
<i>Hillcrest Elementary School</i>	14
<i>Johnnycake Elementary School</i>	15
<i>Lansdowne Elementary School</i>	16
<i>Lutherville Elementary School</i>	17
<i>Milbrook Elementary School</i>	18
<i>New Town Elementary School</i>	19
<i>Owings Mills Elementary School</i>	20
<i>Padonia Elementary School</i>	21
<i>Perry Hall Elementary School</i>	22
<i>Pot Spring Elementary School</i>	23
<i>Reisterstown Elementary School</i>	24
<i>Relay Elementary School</i>	25
<i>Shady Spring Elementary School</i>	26
<i>Sparks Elementary School</i>	27
<i>Summit Park Elementary School</i>	28
<i>Timonium Elementary School</i>	29
<i>Victory Villa Elementary School</i>	30
<i>West Towson Elementary School</i>	31
<i>Westchester Elementary School</i>	32
<i>Westowne Elementary School</i>	33
<i>Woodholme Elementary School</i>	34
<i>Appendix: Full Time Equivalent Enrollment and State Rated Capacity</i>	35

September 30, 2013 Systemwide Capacities

Elementary Schools	09/30/2013 FTE	2013 SRC	FTE/SRC
Arbutus ES	430	405	106.17%
Baltimore Highlands ES	589	549	107.29%
Battle Grove ES	324	377	85.94%
Bear Creek ES	463	484	95.66%
Bedford ES	285	309	92.23%
Berkshire ES	446	428	104.21%
Campfield Center	267	322	82.92%
Carney ES	545	574	94.95%
Carroll Manor ES	341	362	94.20%
Catonsville ES	439	405	108.40%
Cedarmere ES	463	474	97.68%
Chadwick ES	490	408	120.10%
Chapel Hill ES	772	636	121.38%
Charlesmont ES	387	418	92.58%
Chase ES	356	393	90.59%
Chatsworth ES	381	442	86.20%
Chesapeake Terrace ES	293	292	100.34%
Church Lane ES	491	476	103.15%
Colgate ES	350	319	109.72%
Cromwell Valley ES	449	411	109.25%
Deep Creek ES	360	368	97.83%
Deer Park ES	439	451	97.34%
Dogwood ES	577	612	94.28%
Dundalk ES	687	590	116.44%
Edgemere ES	453	523	86.62%
Edmondson Heights ES	471	589	79.97%
Elmwood ES	557	474	117.51%
Essex ES	480	471	101.91%
Featherbed Lane ES	541	654	82.72%
Fifth District ES	257	274	93.80%
Fort Garrison ES	434	431	100.70%
Franklin ES	482	473	101.90%
Fullerton ES	553	463	119.44%
Glenmar ES	402	371	108.36%
Glyndon ES	461	520	88.65%
Grange ES	421	385	109.35%
Gunpowder ES	499	499	100.00%
Halethorpe ES	456	392	116.33%

September 30, 2013 Systemwide Capacities (cont'd)

Elementary Schools	09/30/2013 FTE	2013 SRC	FTE/SRC
Halstead Academy	461	516	89.34%
Hampton ES	554	648	85.49%
Harford Hills ES	424	323	131.27%
Hawthorne ES	562	587	95.74%
Hebbville ES	381	540	70.56%
Hemwood ES	410	415	98.80%
Hillcrest ES	817	666	122.67%
Jacksonville ES	599	637	94.03%
Johnnycake ES	671	559	120.04%
Joppa View ES	697	635	109.76%
Kingsville ES	352	349	100.86%
Lansdowne ES	447	313	142.81%
Logan ES	535	517	103.48%
Lutherville ES	554	407	136.12%
Mars Estates ES	401	431	93.04%
Martin Blvd ES	271	291	93.13%
McCormick ES	370	380	97.37%
Middleborough ES	370	326	113.50%
Middlesex ES	504	517	97.49%
Milbrook ES	384	319	120.38%
New Town ES	971	703	138.12%
Norwood ES	514	521	98.66%
Oakleigh ES	553	496	111.49%
Oliver Beach ES	249	265	93.96%
Orems ES	328	313	104.79%
Owings Mills ES	812	699	116.17%
Padonia ES	453	311	145.66%
Perry Hall ES	665	528	125.95%
Pine Grove ES	517	497	104.02%
Pinewood ES	596	566	105.30%
Pleasant Plains ES	561	509	110.22%
Pot Spring ES	598	477	125.37%
Powhatan ES	302	313	96.49%
Prettyboy ES	428	398	107.54%
Randallstown ES	394	398	98.99%
Red House Run ES	547	486	112.55%
Reisterstown ES	519	450	115.33%
Relay ES	527	415	126.99%

September 30, 2013 Systemwide Capacities (cont'd)

Elementary Schools	09/30/2013 FTE	2013 SRC	FTE/SRC
Riderwood ES	490	463	105.83%
Riverview ES	513	572	89.69%
Rodgers Forge ES	444	396	112.12%
Sandalwood ES	549	542	101.29%
Sandy Plains ES	554	664	83.43%
Scotts Branch ES	560	511	109.59%
Seneca ES	438	409	107.09%
Seven Oaks ES	389	428	90.89%
Seventh District ES	416	461	90.24%
Shady Spring ES	608	499	121.84%
Sparks ES	562	410	137.07%
Stoneleigh ES	739	700	105.57%
Summit Park ES	459	336	136.61%
Sussex ES	429	380	112.89%
Timber Grove ES	603	600	100.50%
Timonium ES	466	395	117.97%
Victory Villa ES	410	326	125.77%
Villa Cresta ES	653	637	102.51%
Vincent Farm ES	716	699	102.43%
Warren ES	418	395	105.82%
Wellwood ES	462	455	101.54%
West Towson ES	542	451	120.18%
Westchester ES	597	499	119.64%
Westowne ES	568	480	118.33%
Winand ES	475	583	81.48%
Winfield ES	496	485	102.27%
Woodbridge ES	438	432	101.39%
Woodholme ES	932	676	137.87%
Woodmoor ES	521	631	82.57%
Total for Elementary Schools	51,836	49,237	105.28%

FTE: Full Time Equivalent Enrollment. SRC: State Rated Capacity.
Systemwide, there are 2,599 seats greater than SRC.

A total of 1,600 additional seats:

- 1) A new 700-seat elementary school at Mays Chapel was funded in the FY 2012 Capital Budget.
- 2) A new 700-seat elementary school in Owings Mills is funded in the FY 2014 Capital Budget.
- 3) A new 200-seat additional at Sparks Elementary School is funded in the FY 2014 Capital Budget.

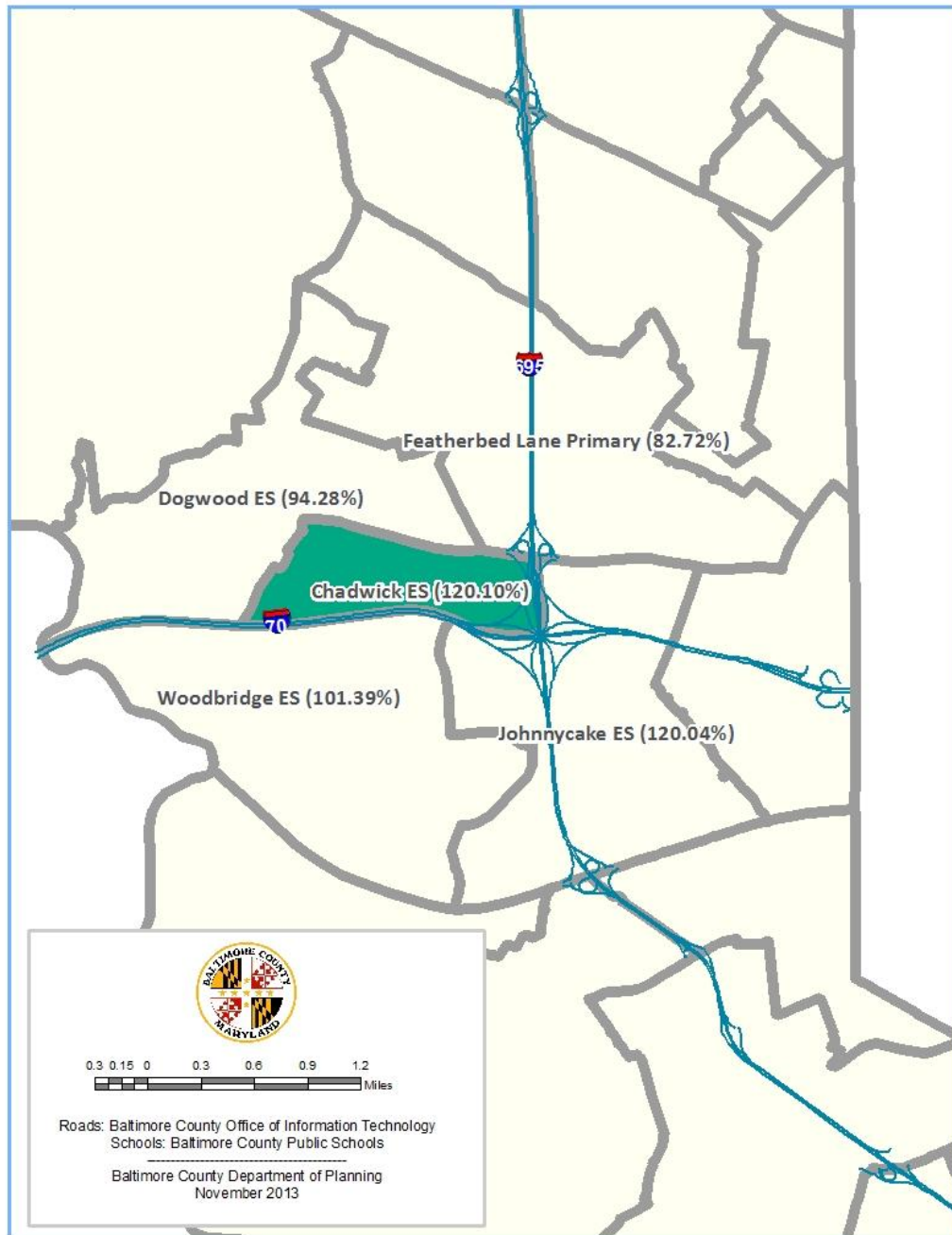
September 30, 2013 Systemwide Capacities (cont'd)

Middle Schools	09/30/2013 FTE	2013 SRC	FTE/SRC
Arbutus MS	807	1,036	77.90%
Catonsville MS	794	774	102.58%
Cockeysville MS	769	1,049	73.31%
Deep Creek MS	766	1,113	68.82%
Deer Park Magnet MS	1,263	1,368	92.32%
Dumbarton MS	970	1,114	87.07%
Dundalk MS	450	814	55.28%
Franklin MS	1,288	1,389	92.73%
Gen Stricker MS	754	1,100	68.55%
Golden Ring MS	638	849	75.15%
Hereford MS	924	1,123	82.28%
Holabird MS	908	967	93.90%
Lansdowne MS	672	954	70.44%
Loch Raven Academy	778	901	86.35%
Middle River MS	821	1,007	81.53%
Old Court MS	627	983	63.78%
Parkville MS	1,000	1,089	91.83%
Perry Hall MS	1,605	1,643	97.69%
Pikesville MS	953	1,006	94.73%
Pine Grove MS	895	1,293	69.22%
Ridgely MS	1,100	1,070	102.80%
Southwest Academy	798	1,101	72.48%
Sparrows Point MS	510	573	89.01%
Stemmers Run MS	682	1,154	59.10%
Sudbrook Magnet MS	1,021	1,060	96.32%
Windsor Mill MS	454	720	63.06%
Woodlawn MS	626	953	65.69%
Total for Middle Schools	22,873	28,203	81.10%
FTE: Full Time Equivalent Enrollment.			
SRC: State Rated Capacity.			
Systemwide, there are 5,402 seats fewer than SRC.			

September 30, 2013 Systemwide Capacities (cont'd)

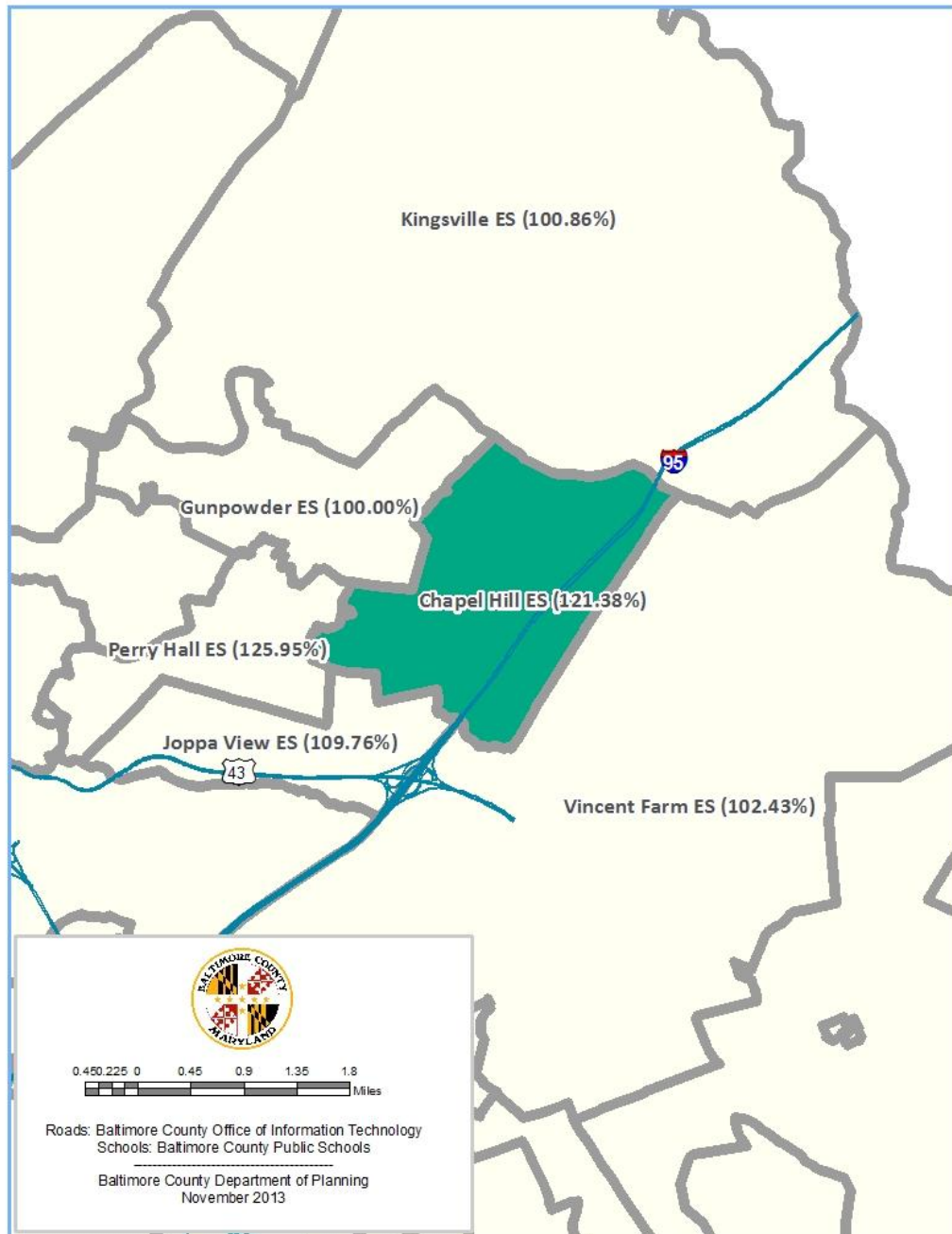
High Schools	09/30/2013 FTE	2013 SRC	FTE/SRC
Carver Center	841	1,028	81.81%
Catonsville High	1,719	1,750	98.23%
Chesapeake High	1,001	1,019	98.23%
Dulaney High	1,856	1,984	93.55%
Dundalk High	1,317	1,450	90.83%
Eastern Tech. High	1,138	1,380	82.46%
Franklin High	1,542	1,647	93.62%
Hereford High	1,273	1,230	103.50%
Kenwood High	1,711	1,918	89.21%
Lansdowne High	1,211	1,420	85.28%
Loch Raven High	888	975	91.08%
Milford Mill Acad.	1,460	1,465	99.66%
New Town High	930	1,303	71.37%
Overlea High	946	1,230	76.91%
Owings Mills High	881	1,103	79.87%
Parkville High	1,523	2,037	74.77%
Patapsco High	1,457	1,302	111.90%
Perry Hall High	2,127	2,110	100.81%
Pikesville High	881	1,006	87.57%
Randallstown High	1,017	1,379	73.75%
Sparrows Point High	809	871	92.88%
Towson High	1,444	1,260	114.60%
Western Tech.	936	1,009	92.77%
Woodlawn High	1,451	2,129	68.15%
Total for High Schools	30,359	34,005	89.28%
FTE: Full Time Equivalent Enrollment.			
SRC: State Rated Capacity.			
Systemwide, there are 3,625 seats fewer than SRC.			
1) A 200-seat addition at Hereford High School is funded in the FY 2014 Capital Budget.			

Chadwick Elementary School



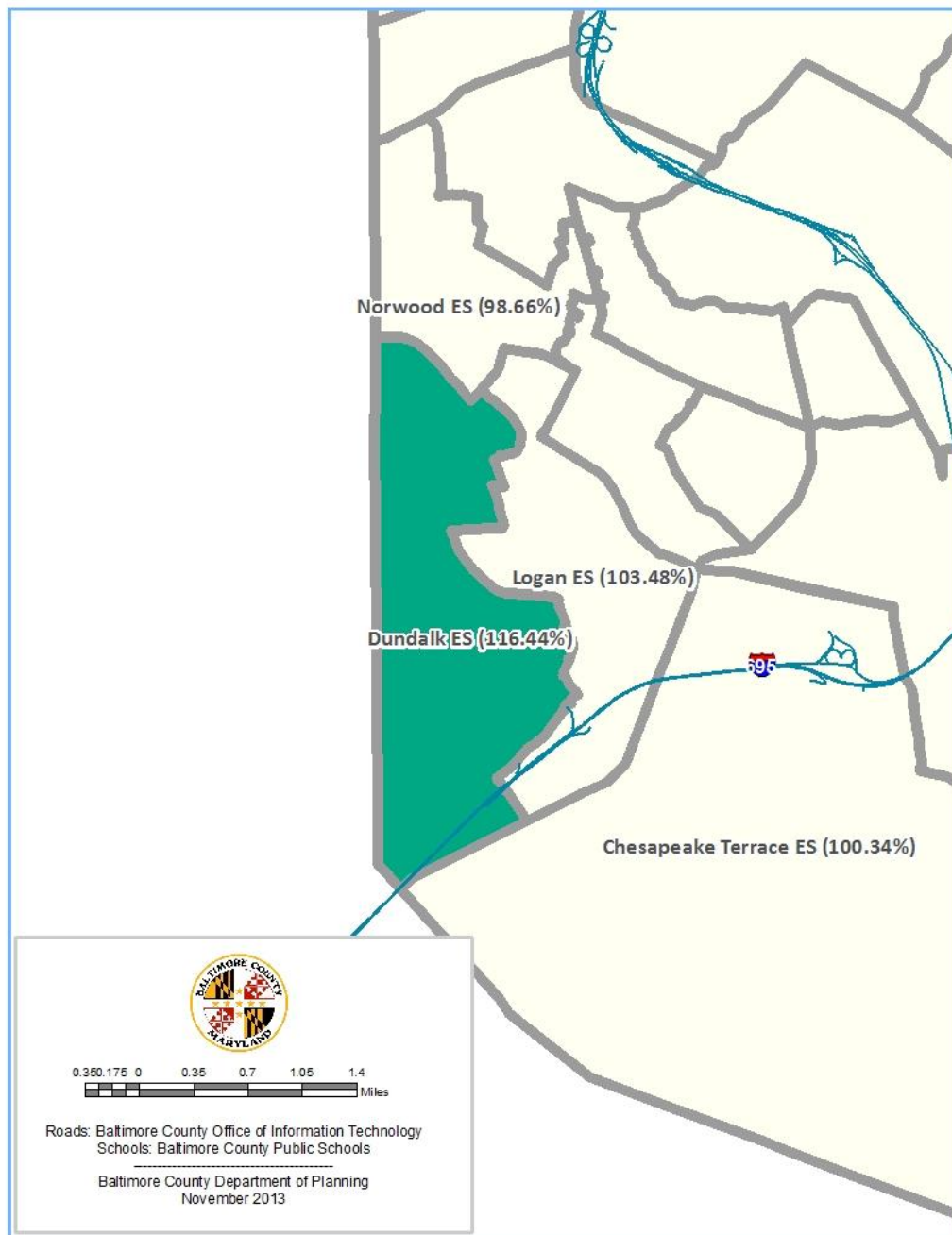
The Chadwick Elementary School's enrollment of September 30, 2013 is 490. The State Rated Capacity (SRC) for this school is 408. Based on these numbers, Chadwick Elementary School is 120.10% of SRC. A school impact analysis will be performed for each proposed development project to determine whether a school adjacent to Chadwick Elementary School (see map above) is overcrowded under Section 32-6-103(f) of the Baltimore County Code.

Chapel Hill Elementary School



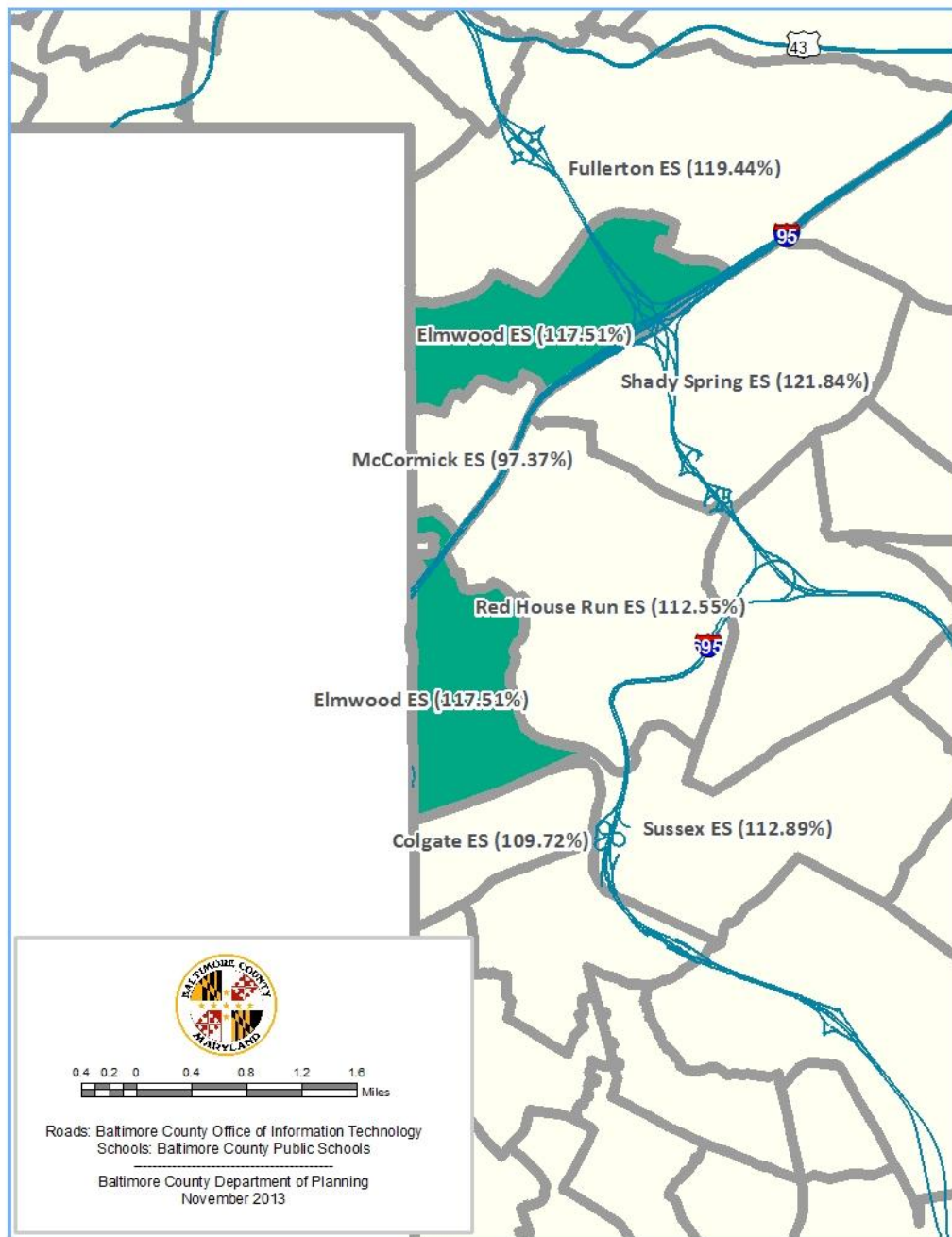
The Chapel Hill Elementary School's enrollment of September 30, 2013 is 772. The State Rated Capacity (SRC) for this school is 636. Based on these numbers, Chapel Hill Elementary School is 121.38% of SRC. A school impact analysis will be performed for each proposed development project to determine whether a school adjacent to Chapel Hill Elementary School (see map above) is overcrowded under Section 32-6-103(f) of the Baltimore County Code.

Dundalk Elementary School



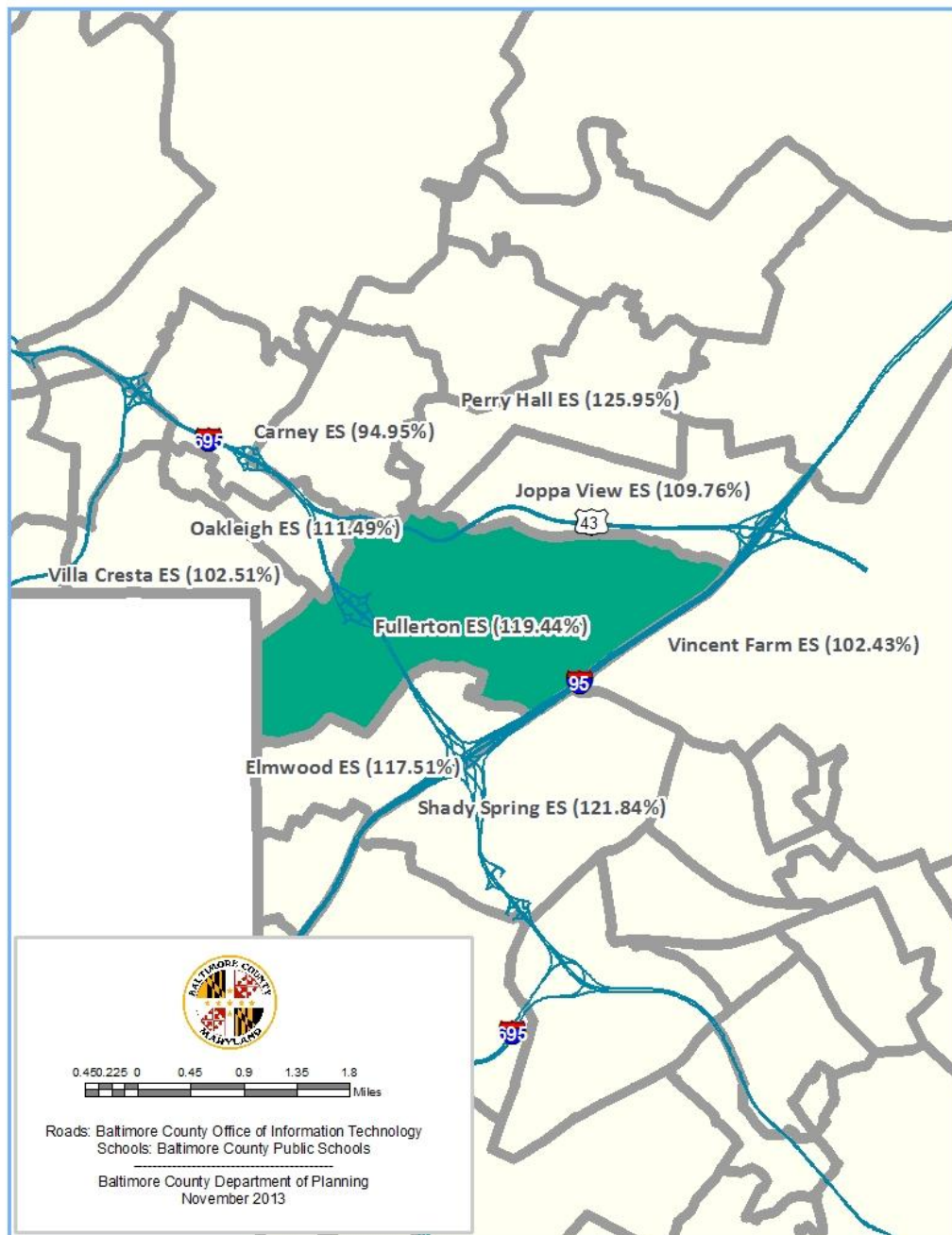
The Dundalk Elementary School's enrollment of September 30, 2013 is 687. The State Rated Capacity (SRC) for this school is 590. Based on these numbers, Dundalk Elementary School is 116.44% of SRC. A school impact analysis will be performed for each proposed development project to determine whether a school adjacent to Dundalk Elementary School (see map above) is overcrowded under Section 32-6-103(f) of the Baltimore County Code.

Elmwood Elementary School



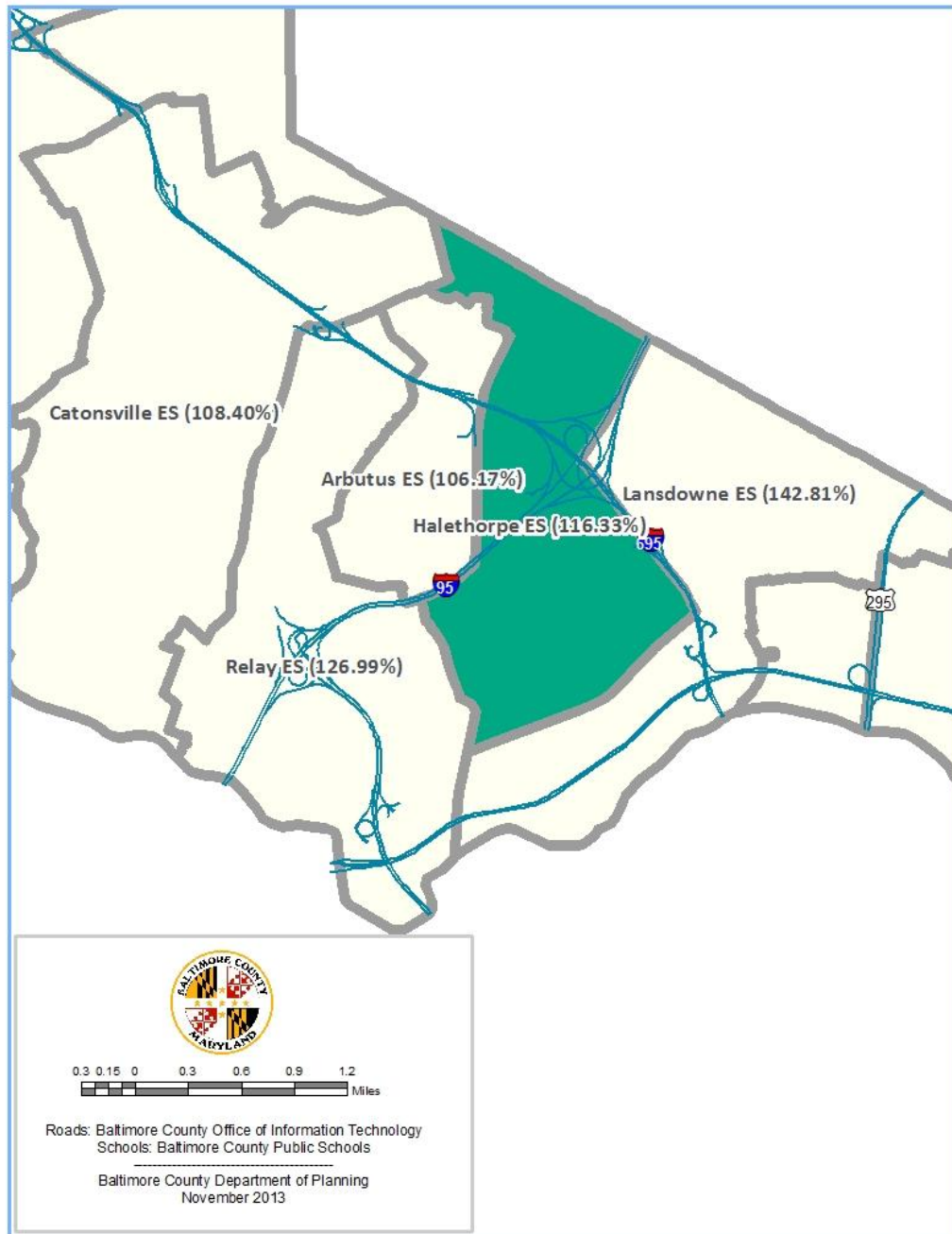
The Elmwood Elementary School's enrollment of September 30, 2013 is 557. The State Rated Capacity (SRC) for this school is 474. Based on these numbers, Elmwood Elementary School is 117.51% of SRC. A school impact analysis will be performed for each proposed development project to determine whether a school adjacent to Elmwood Elementary School (see map above) is overcrowded under Section 32-6-103(f) of the Baltimore County Code.

Fullerton Elementary School



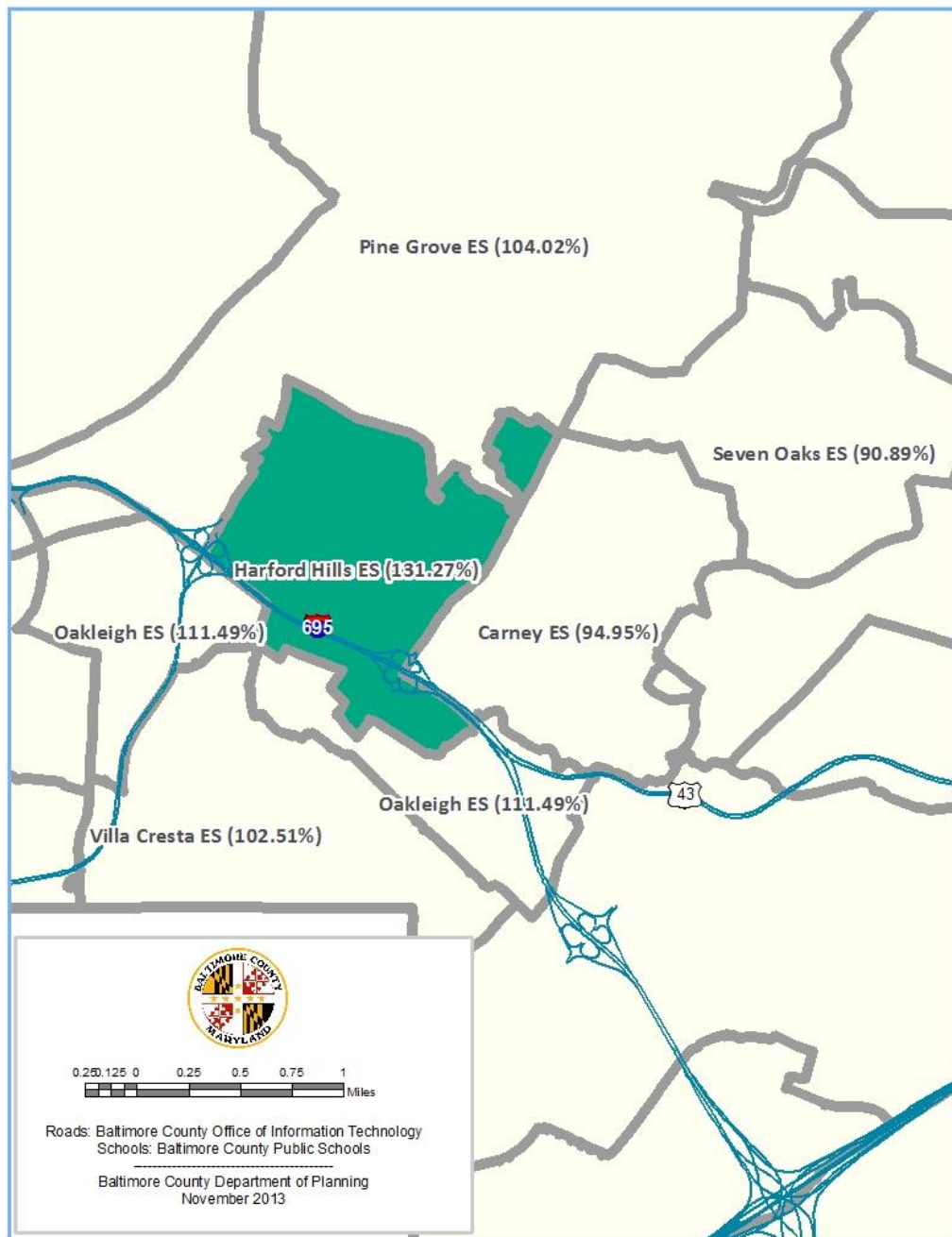
The Fullerton Elementary School's enrollment of September 30, 2013 is 553. The State Rated Capacity (SRC) for this school is 463. Based on these numbers, Fullerton Elementary School is 119.44% of SRC. A school impact analysis will be performed for each proposed development project to determine whether a school adjacent to Fullerton Elementary School (see map above) is overcrowded under Section 32-6-103(f) of the Baltimore County Code.

Halethorpe Elementary School



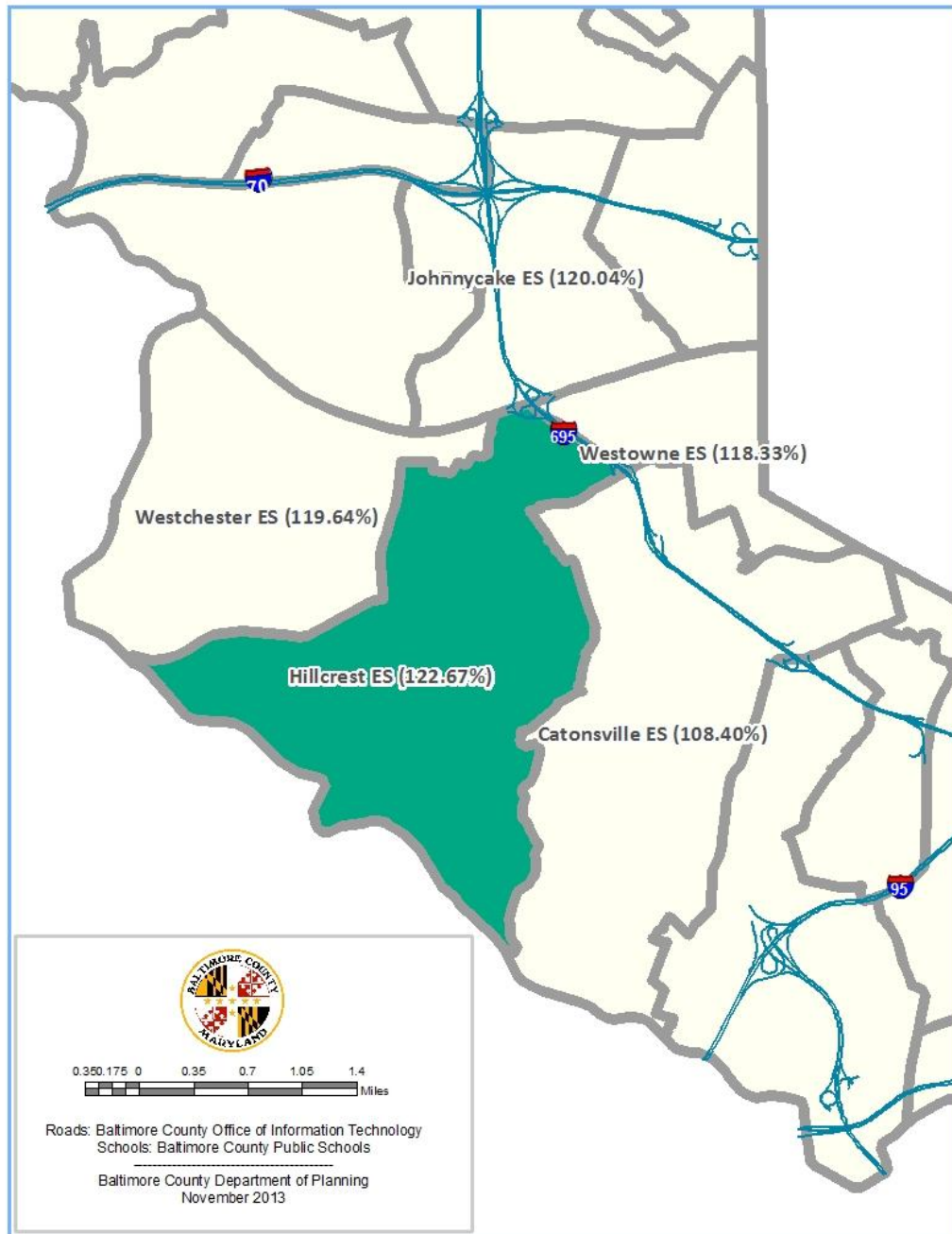
The Halethorpe Elementary School's enrollment of September 30, 2013 is 456. The State Rated Capacity (SRC) for this school is 392. Based on these numbers, Halethorpe Elementary School is 116.33% of SRC. A school impact analysis will be performed for each proposed development project to determine whether a school adjacent to Halethorpe Elementary School (see map above) is overcrowded under Section 32-6-103(f) of the Baltimore County Code.

Harford Hills Elementary School



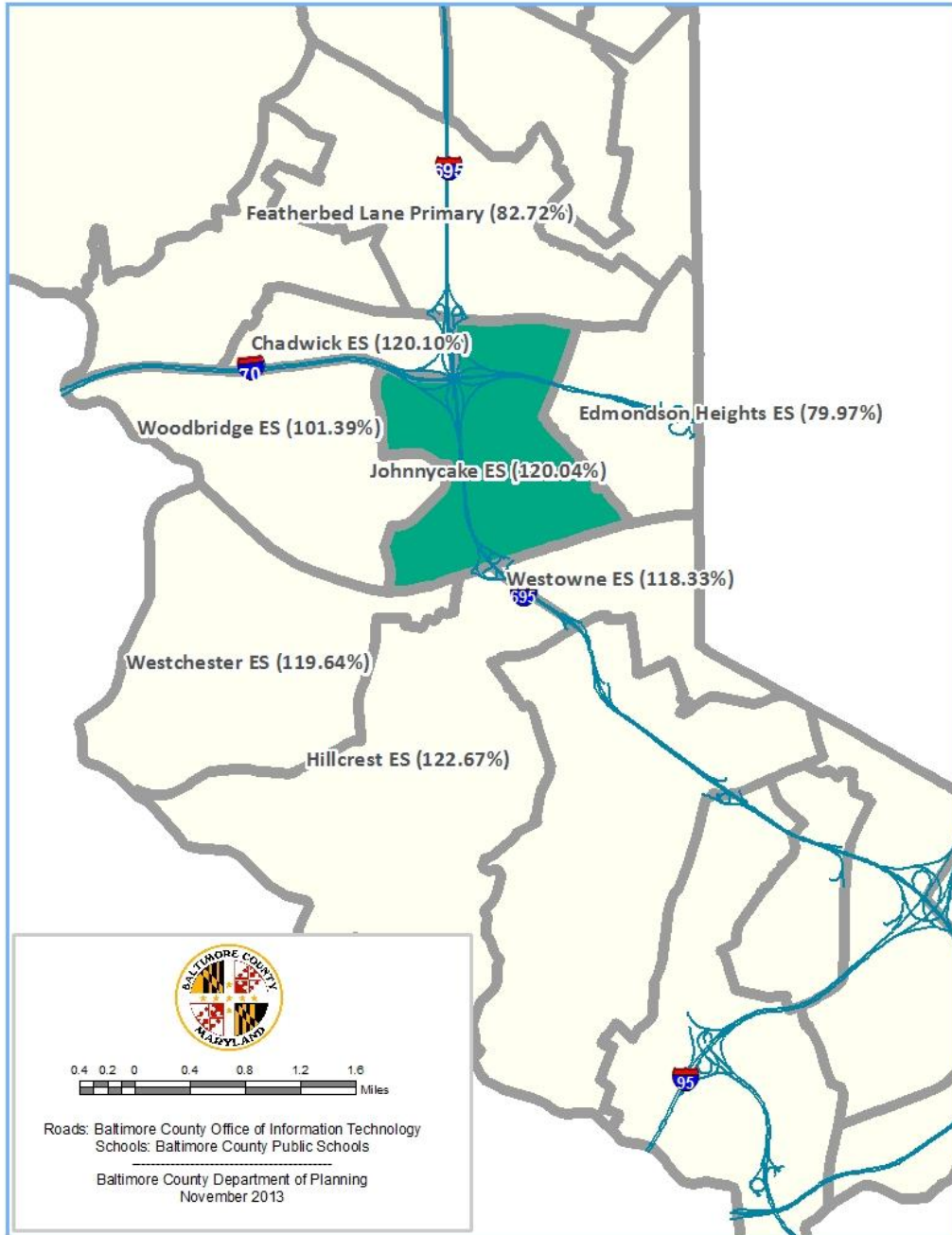
The Harford Hills Elementary School's enrollment of September 30, 2013 is 424. The State Rated Capacity (SRC) for this school is 323. Based on these numbers, Harford Hills Elementary School is 131.27% of SRC. A school impact analysis will be performed for each proposed development project to determine whether a school adjacent to Harford Hills Elementary School (see map above) is overcrowded under Section 32-6-103(f) of the Baltimore County Code.

Hillcrest Elementary School



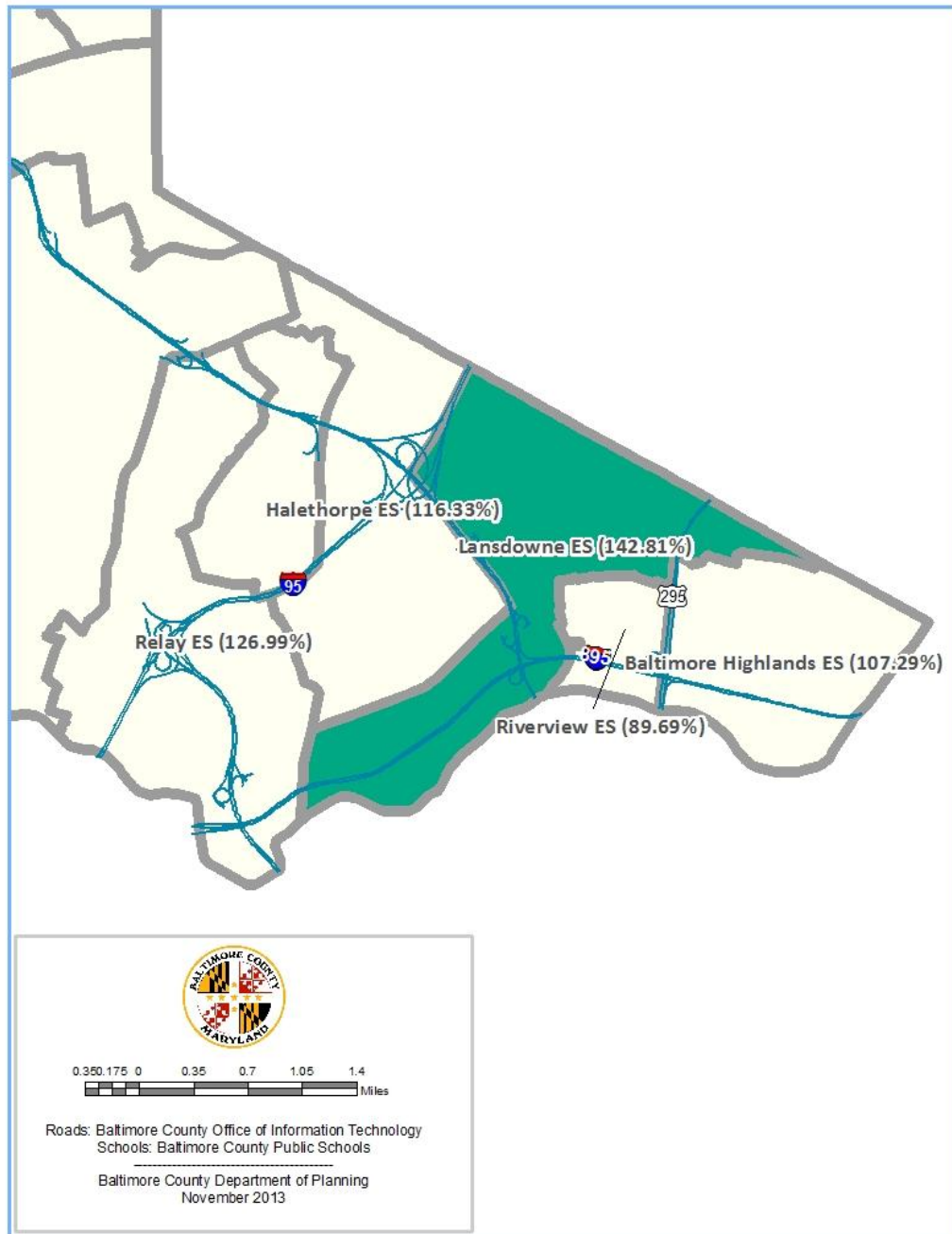
The Hillcrest Elementary School's enrollment of September 30, 2013 is 817. The State Rated Capacity (SRC) for this school is 666. Based on these numbers, Hillcrest Elementary School is 122.67% of SRC. A school impact analysis will be performed for each proposed development project to determine whether a school adjacent to Hillcrest Elementary School (see map above) is overcrowded under Section 32-6-103(f) of the Baltimore County Code.

Johnnycake Elementary School



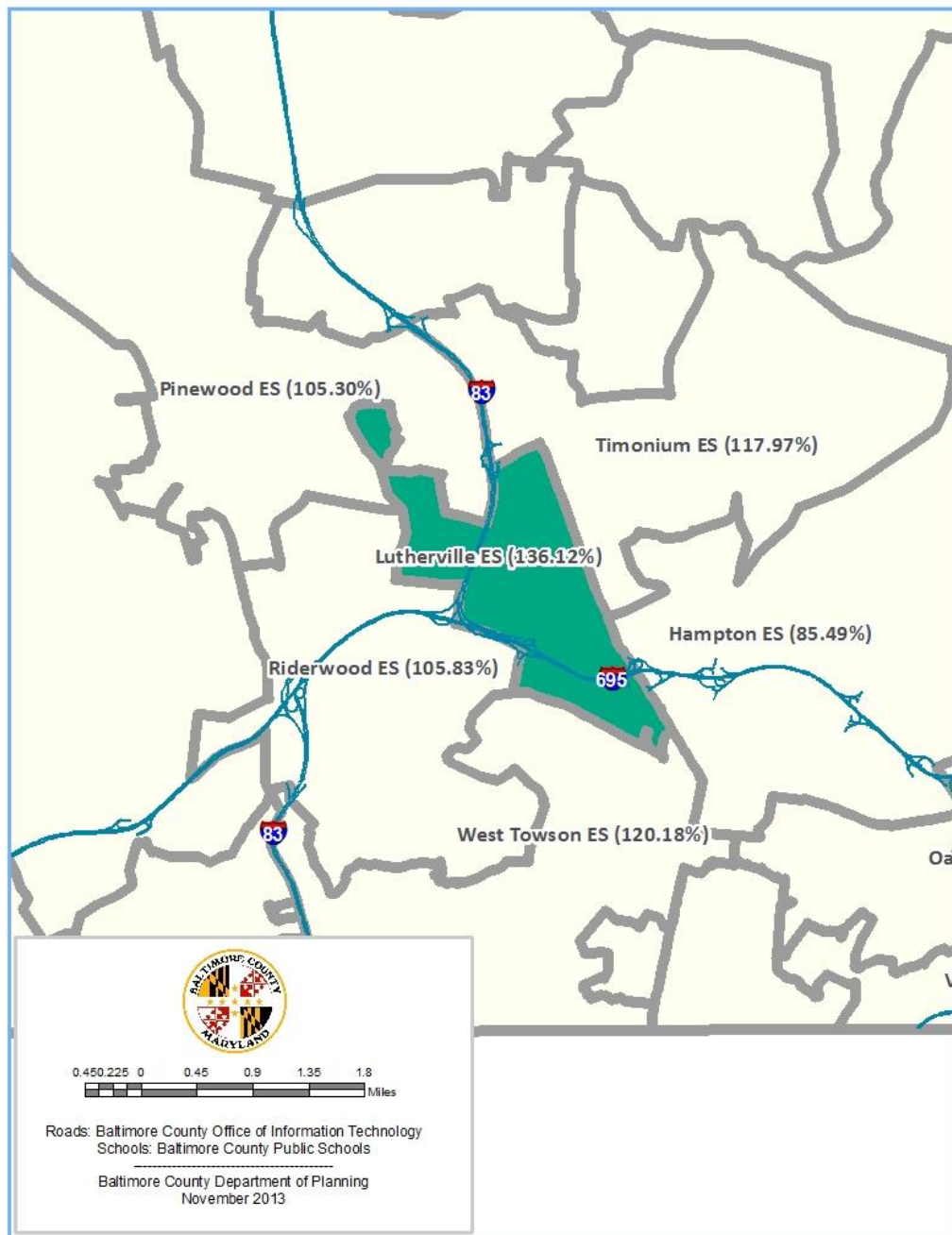
The Johnnycake Elementary School's enrollment of September 30, 2013 is 671. The State Rated Capacity (SRC) for this school is 559. Based on these numbers, Johnnycake Elementary School is 120.04% of SRC. A school impact analysis will be performed for each proposed development project to determine whether a school adjacent to Johnnycake Elementary School (see map above) is overcrowded under Section 32-6-103(f) of the Baltimore County Code.

Lansdowne Elementary School



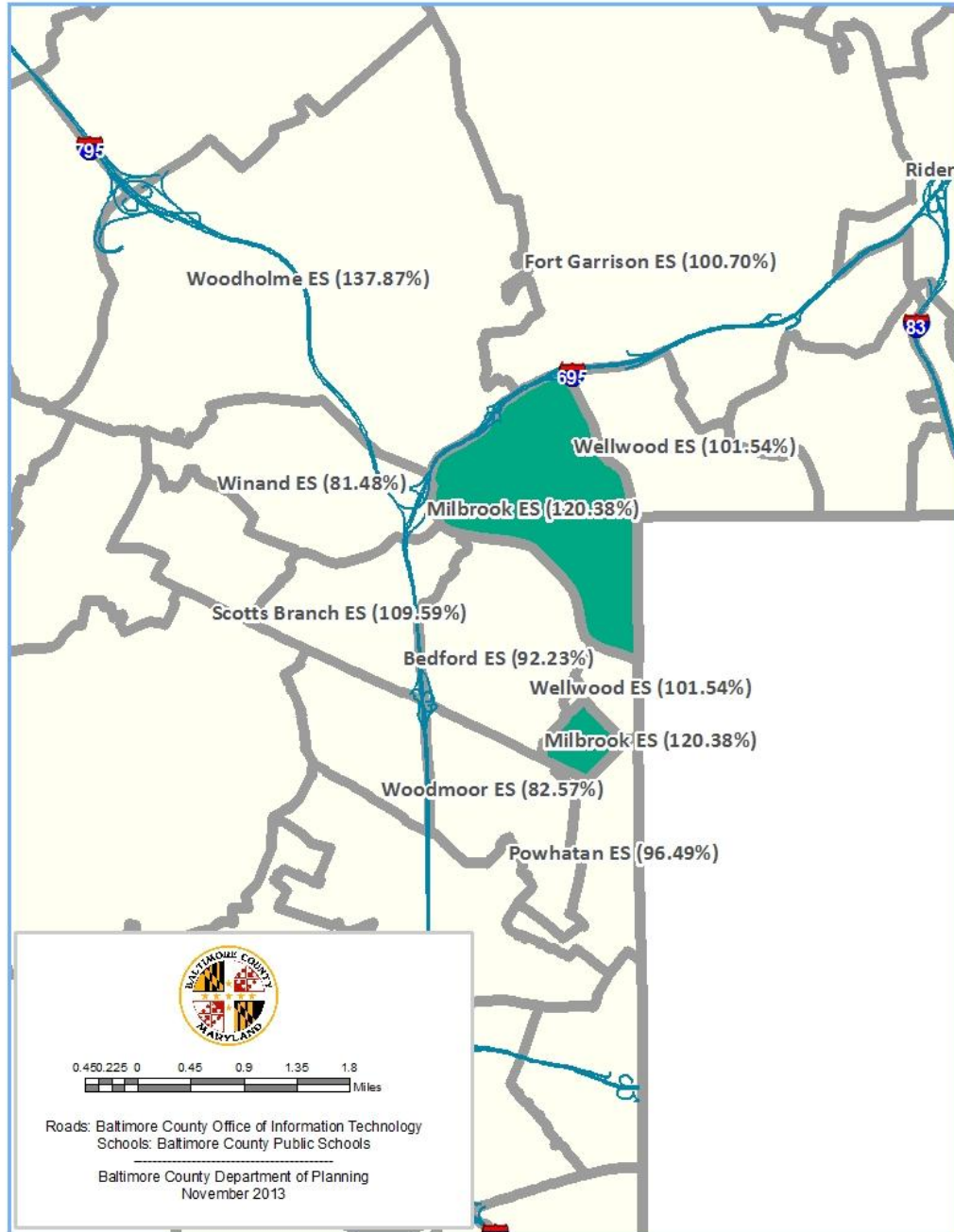
The Lansdowne Elementary School's enrollment of September 30, 2013 is 447. The State Rated Capacity (SRC) for this school is 313. Based on these numbers, Lansdowne Elementary School is 142.81% of SRC. A school impact analysis will be performed for each proposed development project to determine whether a school adjacent to Lansdowne Elementary School (see map above) is overcrowded under Section 32-6-103(f) of the Baltimore County Code.

Lutherville Elementary School



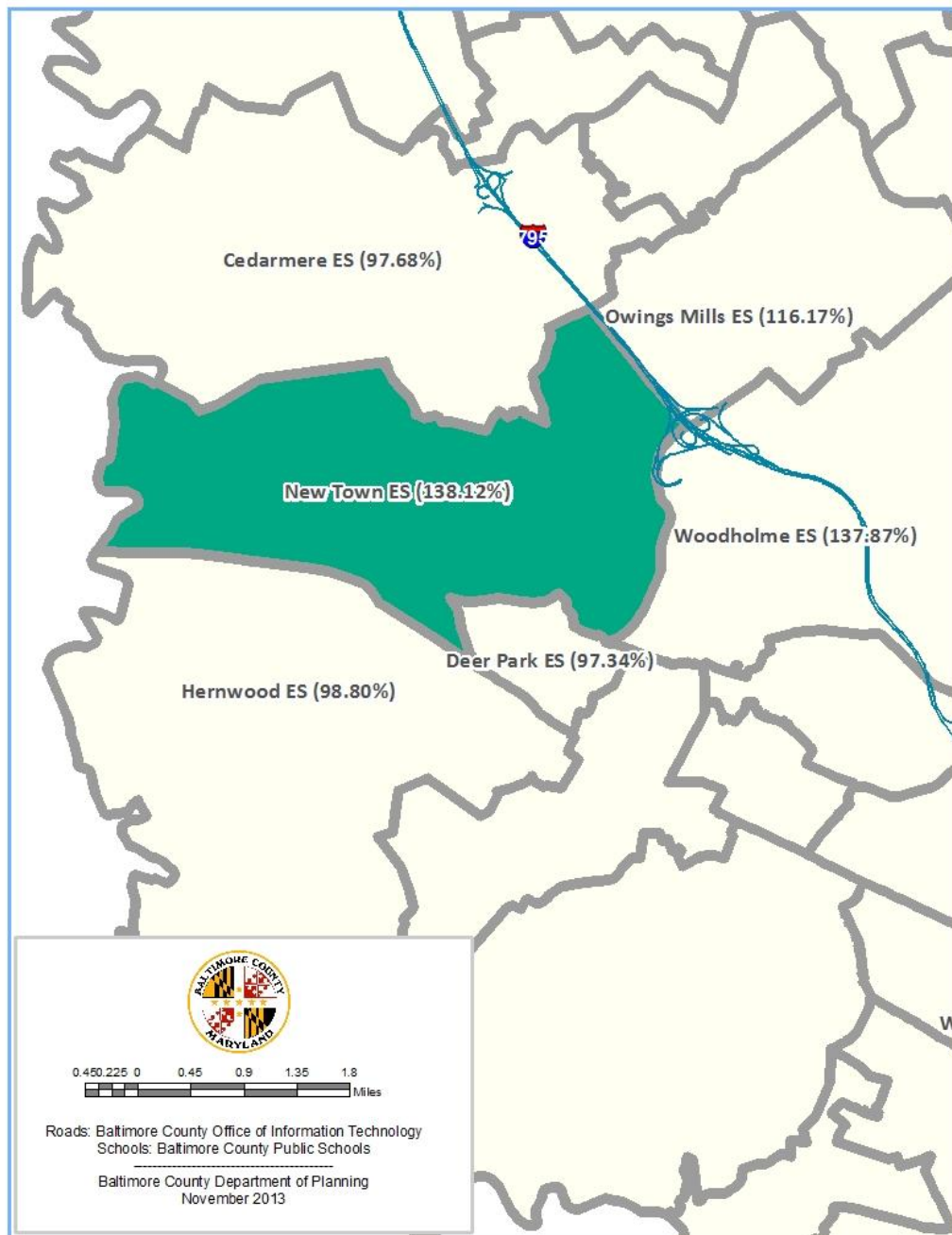
The Lutherville Elementary School's enrollment of September 30, 2013 is 554. The State Rated Capacity (SRC) for this school is 407. Based on these numbers, Lutherville Elementary School is 136.12% of SRC. A school impact analysis will be performed for each proposed development project to determine whether a school adjacent to Lutherville Elementary School (see map above) is overcrowded under Section 32-6-103(f) of the Baltimore County Code. The Baltimore County Capital Budget for Fiscal Year 2012 provided \$20,360,000 to fund the construction of a new, 700-seat elementary school at Mays Chapel that is to open in Fall 2014.

Milbrook Elementary School



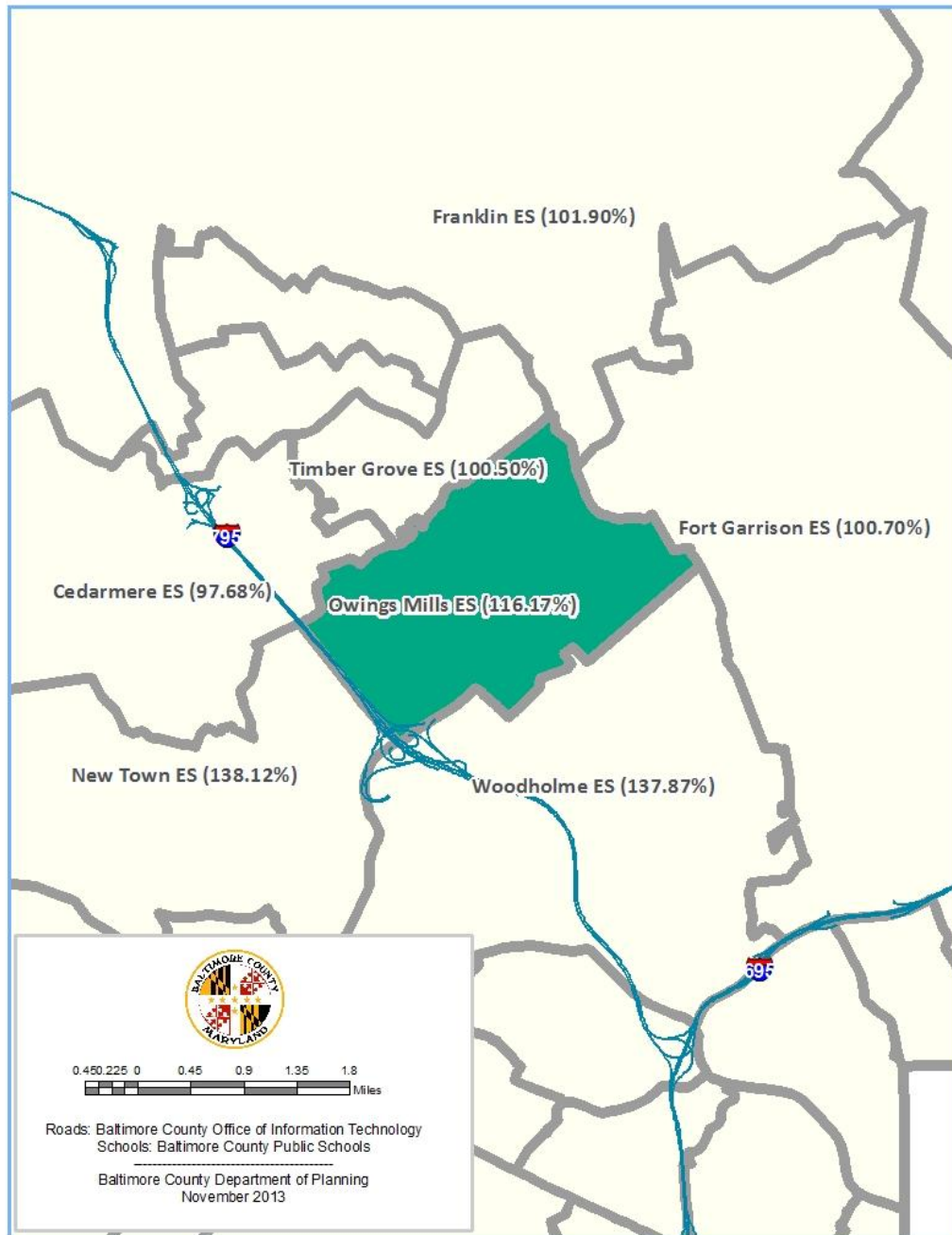
The Milbrook Elementary School's enrollment of September 30, 2013 is 384. The State Rated Capacity (SRC) for this school is 319. Based on these numbers, Milbrook Elementary School is 120.38% of SRC. A school impact analysis will be performed for each proposed development project to determine whether a school adjacent to Milbrook Elementary School (see map above) is overcrowded under Section 32-6-103(f) of the Baltimore County Code.

New Town Elementary School



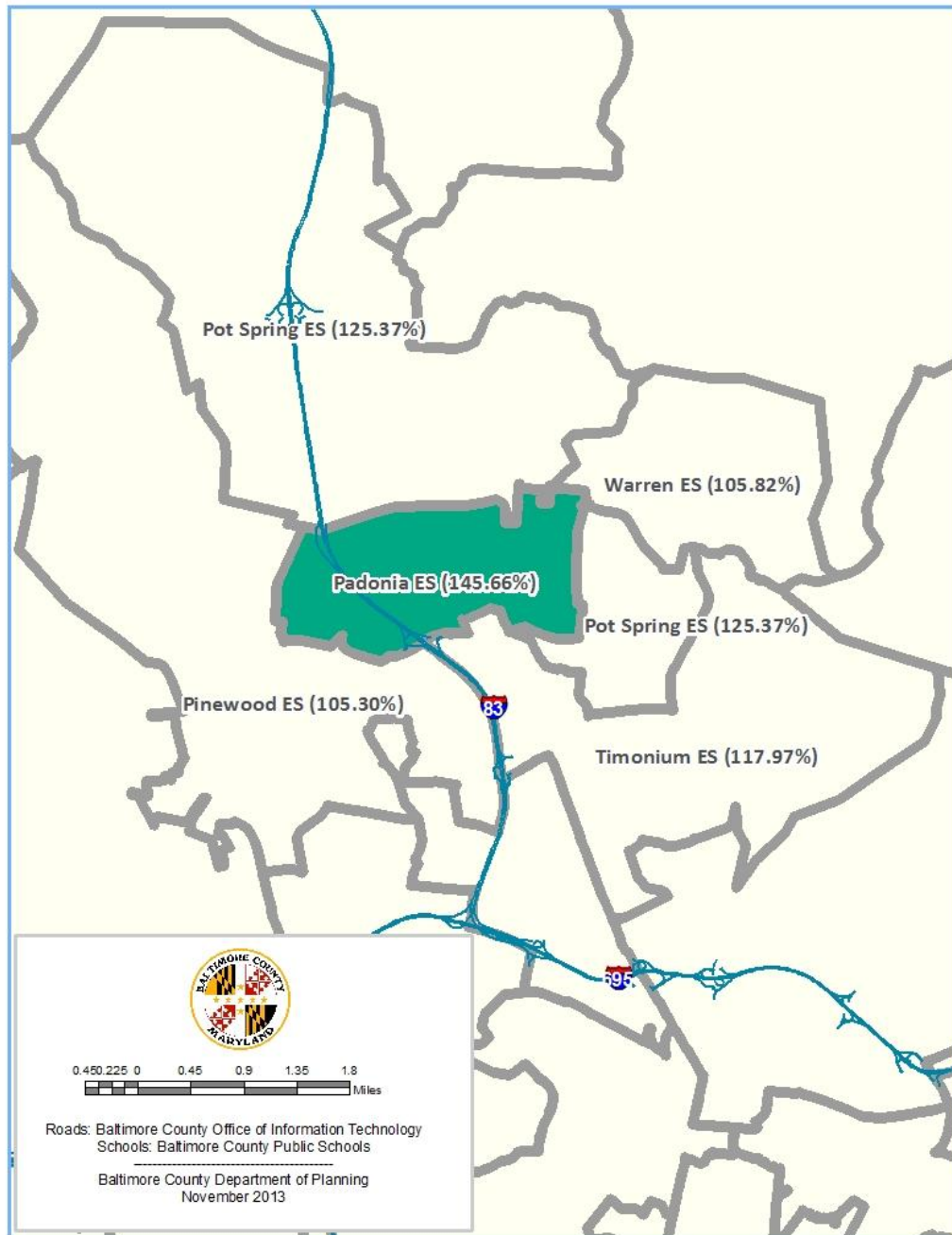
The New Town Elementary School's enrollment of September 30, 2013 is 971. The State Rated Capacity (SRC) for this school is 703. Based on these numbers, New Town Elementary School is 138.12% of SRC. A school impact analysis will be performed for each proposed development project to determine whether a school adjacent to New Town Elementary School (see map above) is overcrowded under Section 32-6-103(f) of the Baltimore County Code. The Baltimore County Capital Budget for Fiscal Year 2014 funds the construction of a new, 700-seat elementary school in the Owings Mills area.

Owings Mills Elementary School



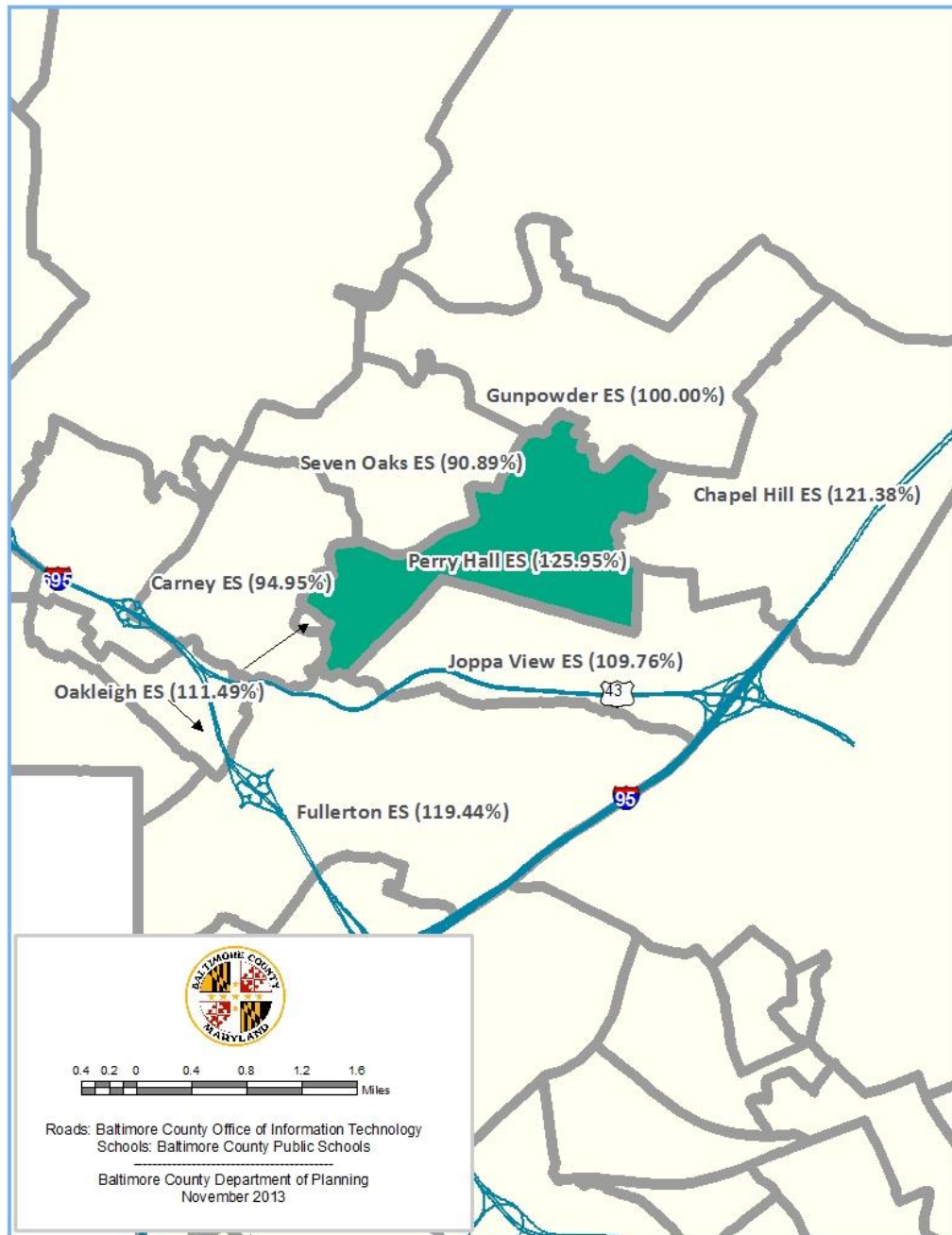
The Owings Mills Elementary School's enrollment of September 30, 2013 is 812. The State Rated Capacity (SRC) for this school is 699. Based on these numbers, Owings Mills Elementary School is 116.17% of SRC. A school impact analysis will be performed for each proposed development project to determine whether a school adjacent to Owings Mills Elementary School (see map above) is overcrowded under Section 32-6-103(f) of the Baltimore County Code. The Baltimore County Capital Budget for Fiscal Year 2014 funds the construction of a new, 700-seat elementary school in the Owings Mills area.

Padonia Elementary School



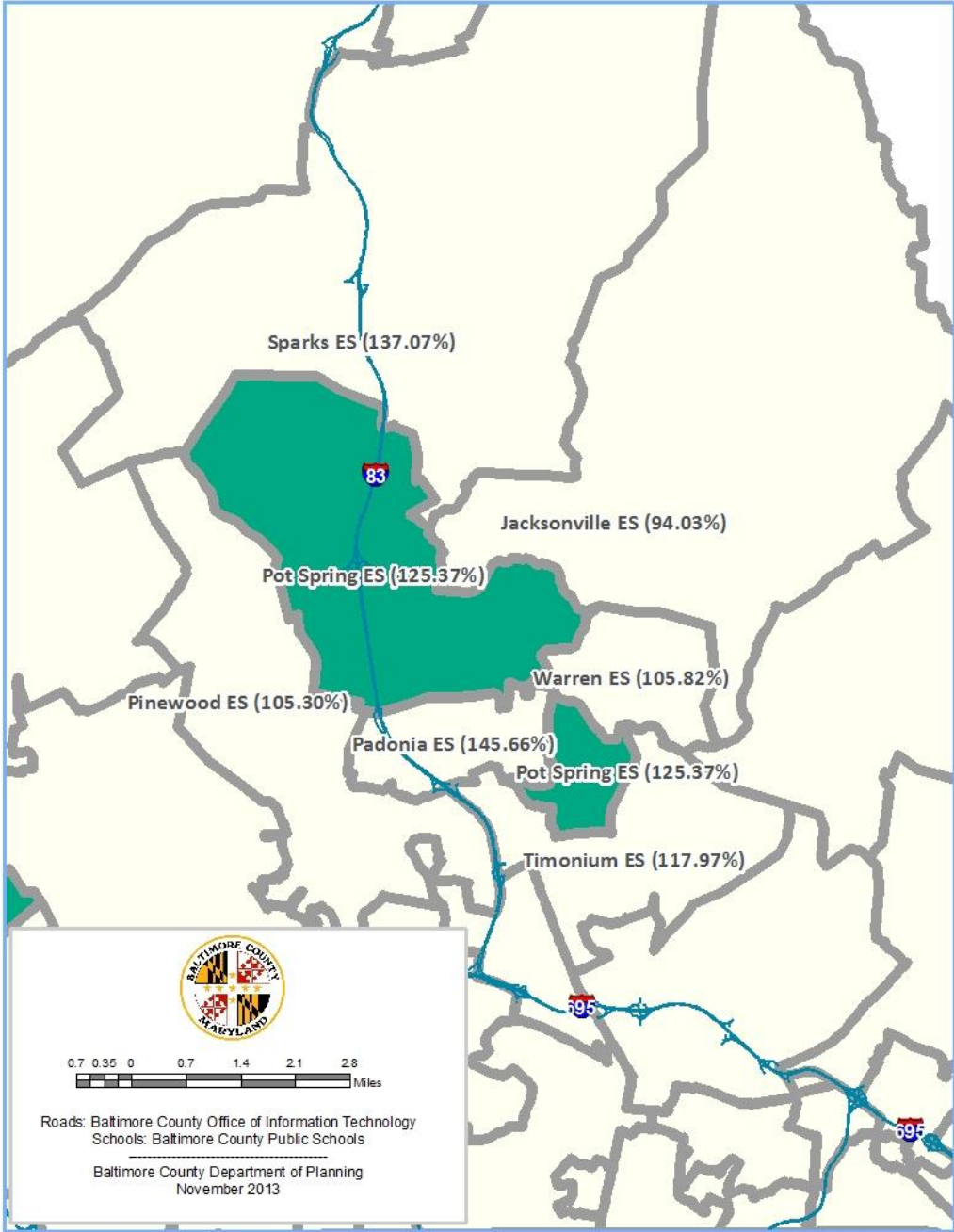
The Padonia Elementary School's enrollment of September 30, 2013 is 453. The State Rated Capacity (SRC) for this school is 311. Based on these numbers, Padonia Elementary School is 145.66% of SRC. A school impact analysis will be performed for each proposed development project to determine whether a school adjacent to Padonia Elementary School (see map above) is overcrowded under Section 32-6-103(f) of the Baltimore County Code. The Baltimore County Capital Budget for Fiscal Year 2012 provided \$20,360,000 to fund the construction of a new, 700-seat elementary school at Mays Chapel that is to open in Fall 2014.

Perry Hall Elementary School



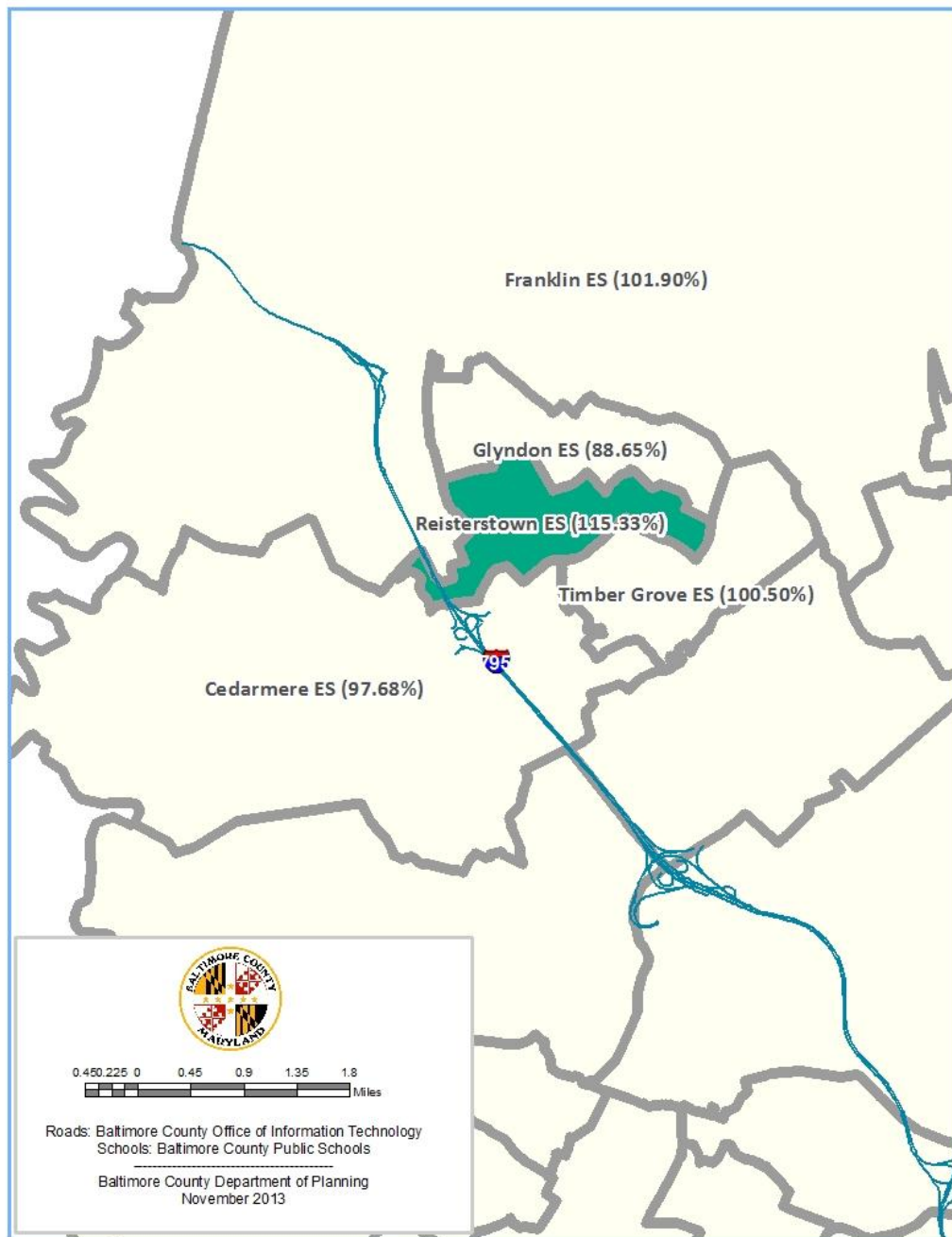
The Perry Hall Elementary School's enrollment of September 30, 2013 is 665. The State Rated Capacity (SRC) for this school is 528. Based on these numbers, Perry Hall Elementary School is 125.95% of SRC. A school impact analysis will be performed for each proposed development project to determine whether a school adjacent to Perry Hall Elementary School (see map above) is overcrowded under Section 32-6-103(f) of the Baltimore County Code.

Pot Spring Elementary School



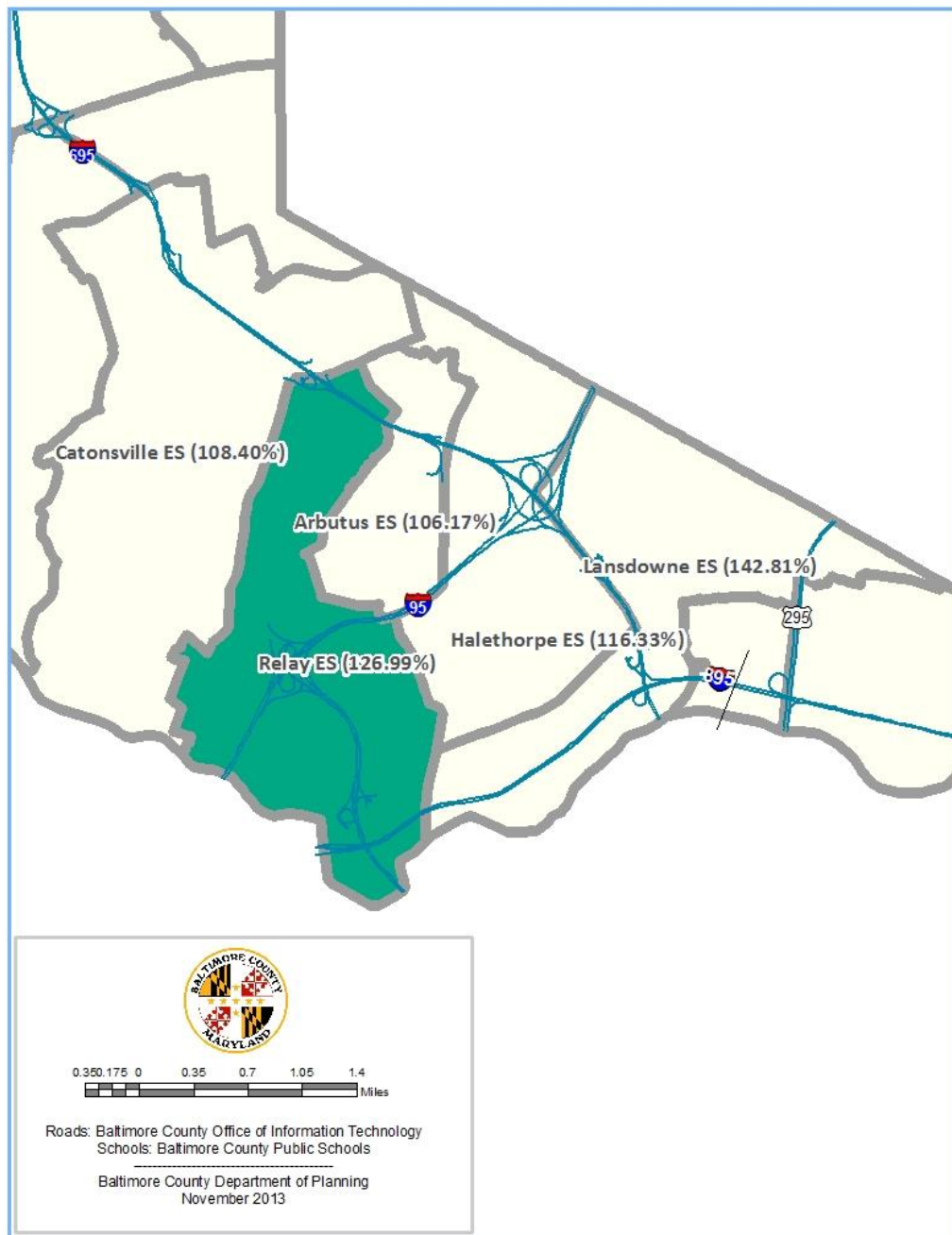
The Pot Spring Elementary School’s enrollment of September 30, 2013 is 598. The State Rated Capacity (SRC) for this school is 477. Based on these numbers, Pot Spring Elementary School is 125.37% of SRC. A school impact analysis will be performed for each proposed development project to determine whether a school adjacent to Pot Spring Elementary School (see map above) is overcrowded under Section 32-6-103(f) of the Baltimore County Code. The Baltimore County Capital Budget for Fiscal Year 2012 provided \$20,360,000 to fund the construction of a new, 700-seat elementary school at Mays Chapel that is to open in Fall 2014.

Reisterstown Elementary School



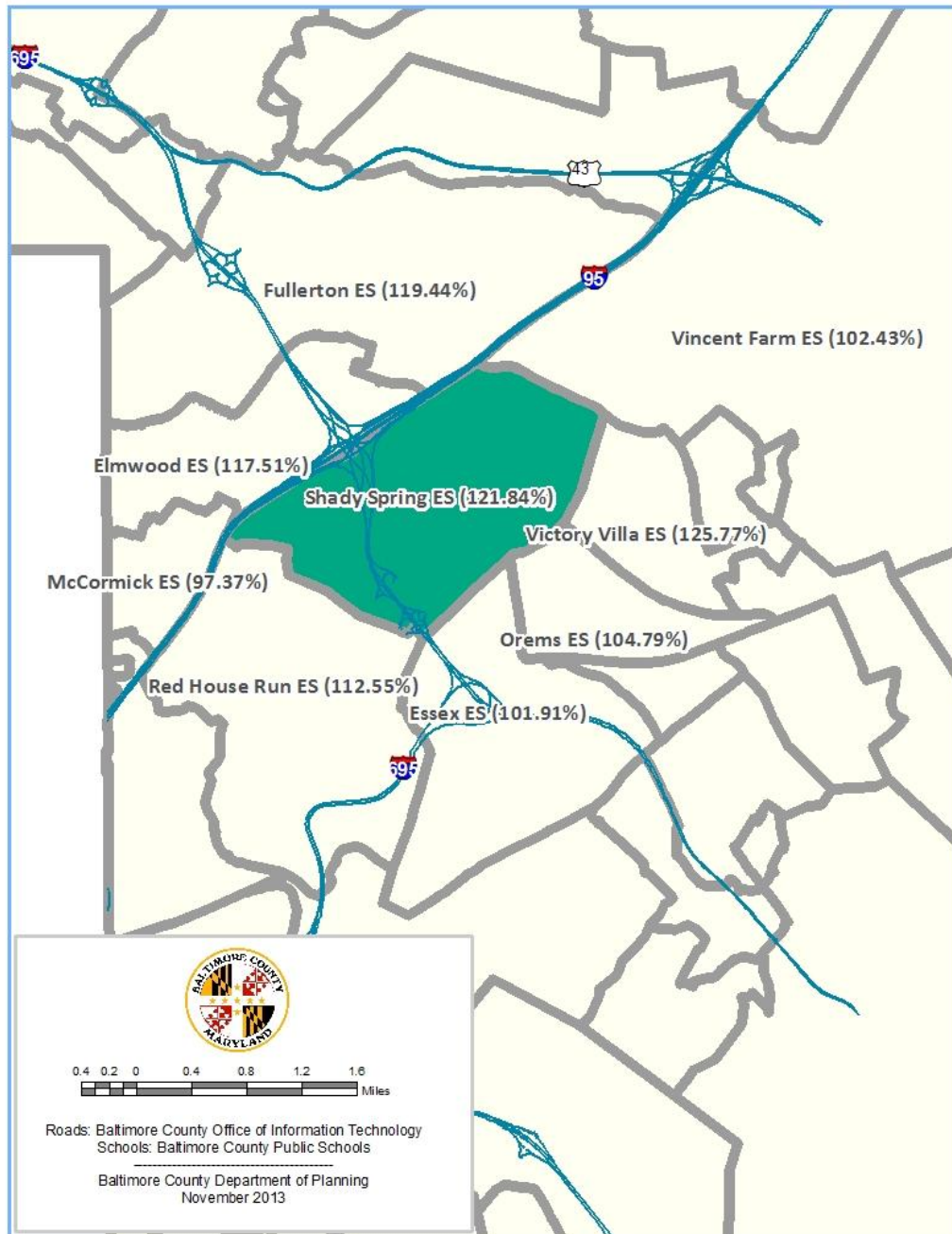
The Reisterstown Elementary School's enrollment of September 30, 2013 is 519. The State Rated Capacity (SRC) for this school is 450. Based on these numbers, Reisterstown Elementary School is 115.33% of SRC. A school impact analysis will be performed for each proposed development project to determine whether a school adjacent to Reisterstown Elementary School (see map above) is overcrowded under Section 32-6-103(f) of the Baltimore County Code. The Baltimore County Capital Budget for Fiscal Year 2014 funds the construction of a new, 700-seat elementary school in the Owings Mills area.

Relay Elementary School



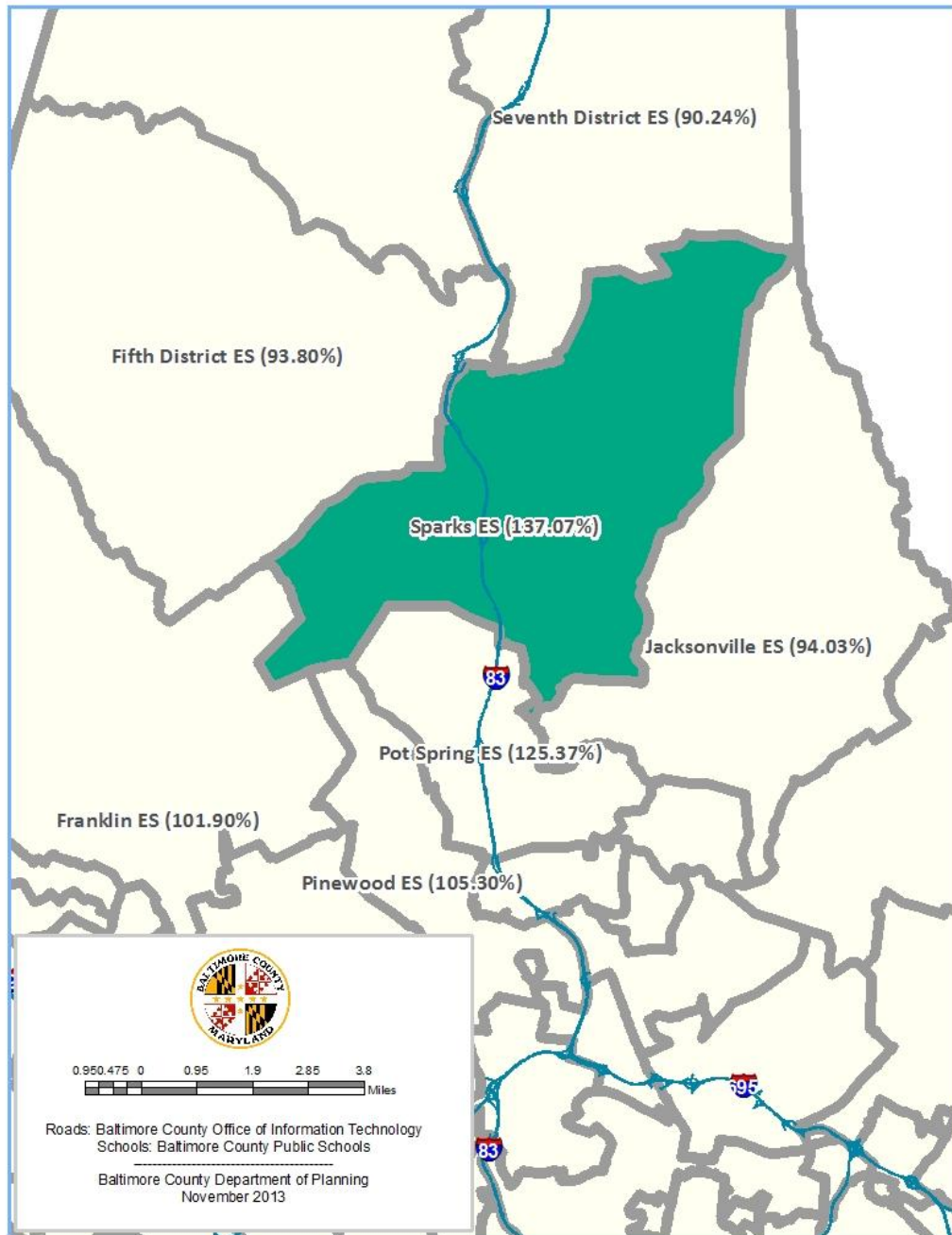
The Relay Elementary School's enrollment of September 30, 2013 is 527. The State Rated Capacity (SRC) for this school is 415. Based on these numbers, Relay Elementary School is 126.99% of SRC. A school impact analysis will be performed for each proposed development project to determine whether a school adjacent to Relay Elementary School (see map above) is overcrowded under Section 32-6-103(f) of the Baltimore County Code.

Shady Spring Elementary School



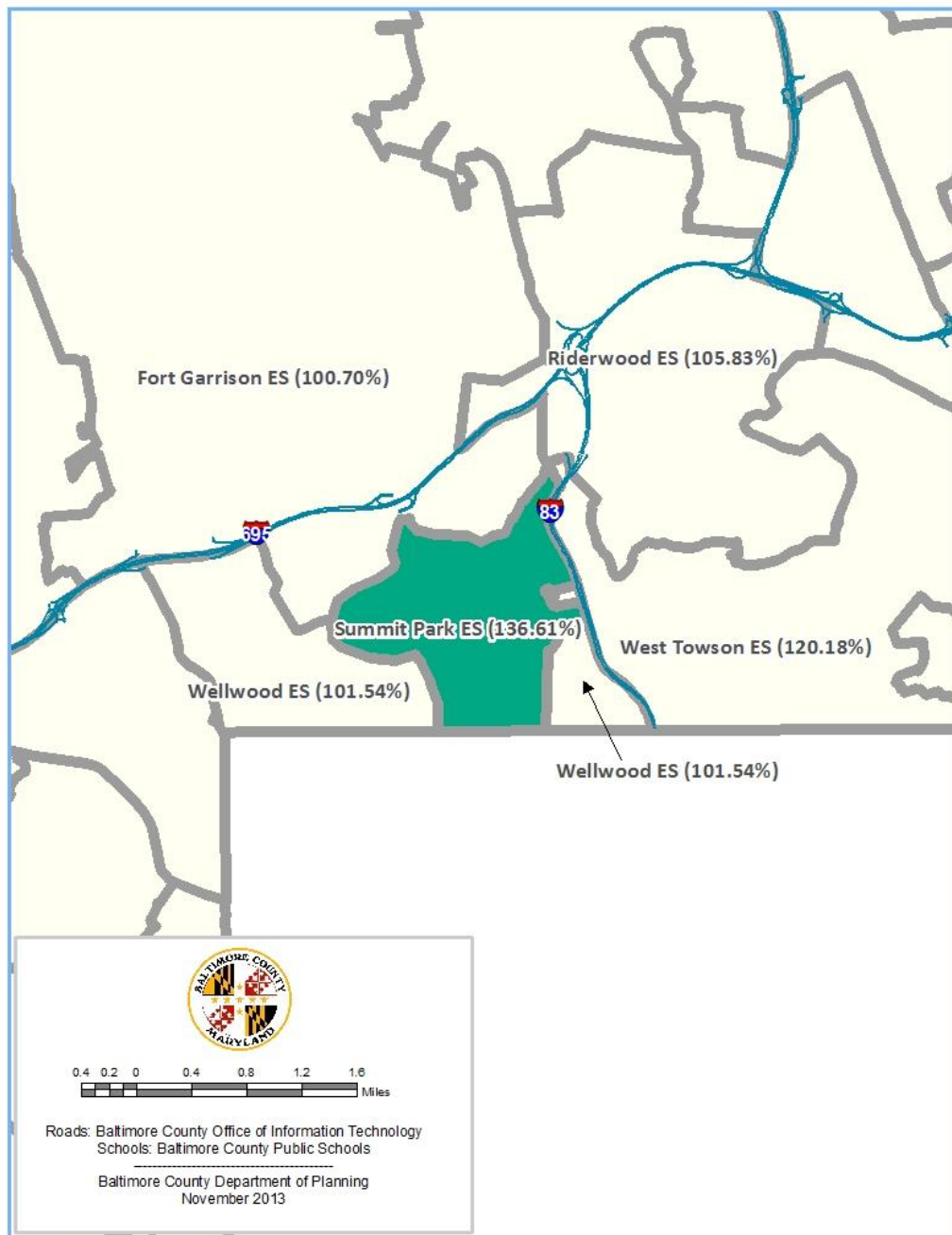
The Shady Spring Elementary School's enrollment of September 30, 2013 is 608. The State Rated Capacity (SRC) for this school is 499. Based on these numbers, Shady Spring Elementary School is 121.84% of SRC. A school impact analysis will be performed for each proposed development project to determine whether a school adjacent to Shady Spring Elementary School (see map above) is overcrowded under Section 32-6-103(f) of the Baltimore County Code.

Sparks Elementary School



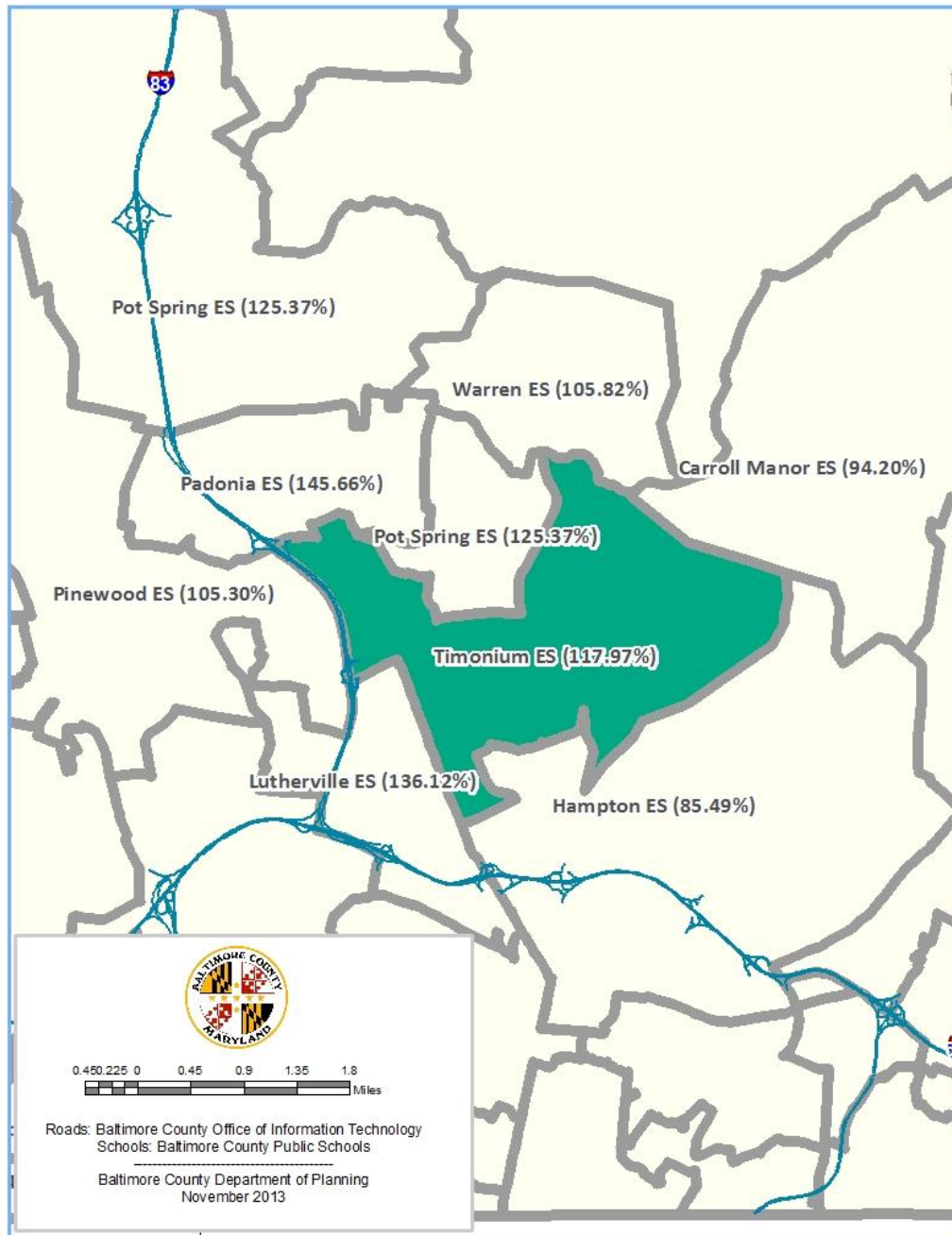
The Sparks Elementary School's enrollment of September 30, 2013 is 562. The State Rated Capacity (SRC) for this school is 410. Based on these numbers, Sparks Elementary School is 137.07% of SRC. A school impact analysis will be performed for each proposed development project to determine whether a school adjacent to Sparks Elementary School (see map above) is overcrowded under Section 32-6-103(f) of the Baltimore County Code. The Baltimore County Capital Budget for fiscal year 2014 funds a 200-seat addition at Sparks Elementary School that is to open in Fall 2015.

Summit Park Elementary School



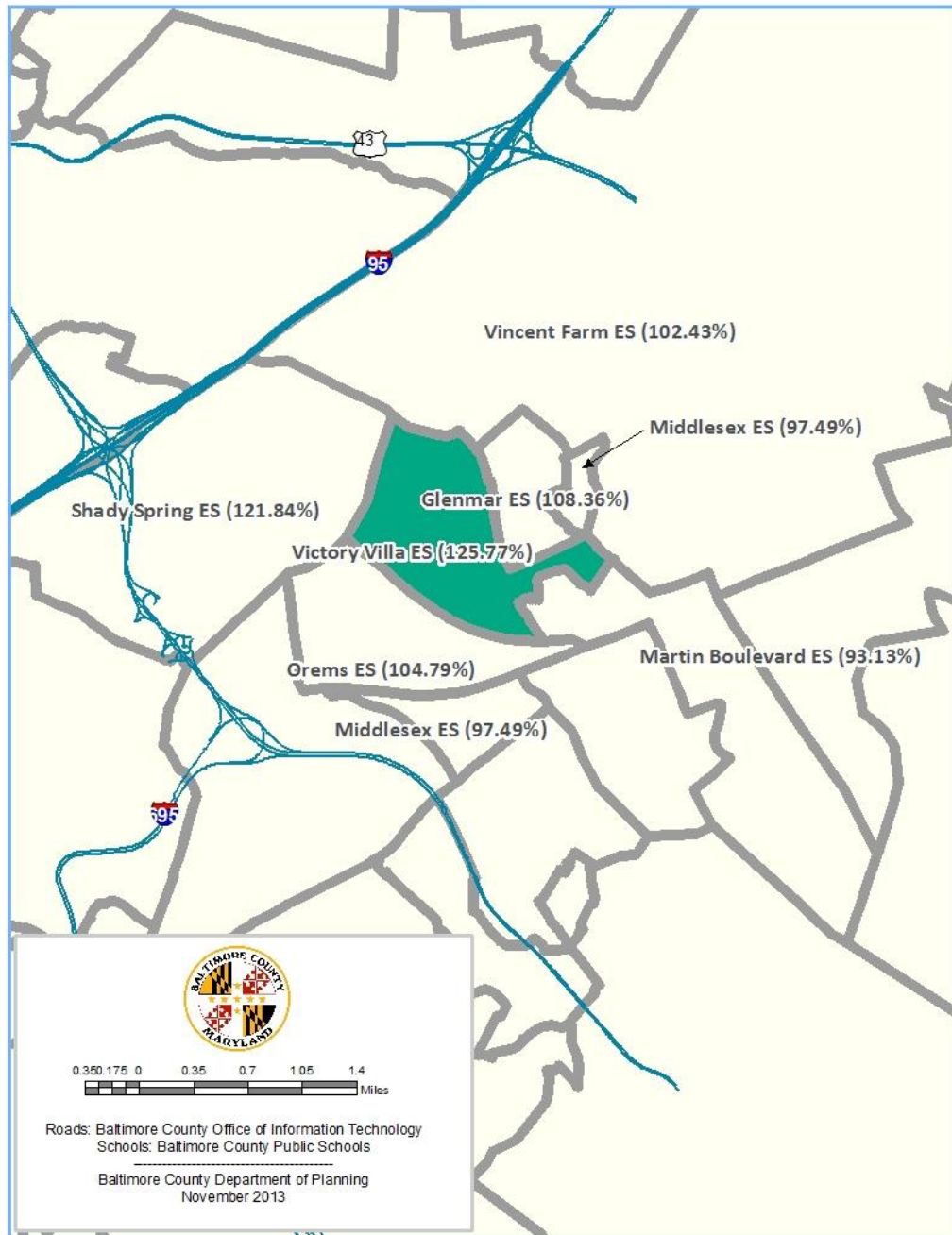
The Summit Park Elementary School's enrollment of September 30, 2013 is 459. The State Rated Capacity (SRC) for this school is 336. Based on these numbers, Summit Park Elementary School is 136.61% of SRC. A school impact analysis will be performed for each proposed development project to determine whether a school adjacent to Summit Park Elementary School (see map above) is overcrowded under Section 32-6-103(f) of the Baltimore County Code.

Timonium Elementary School



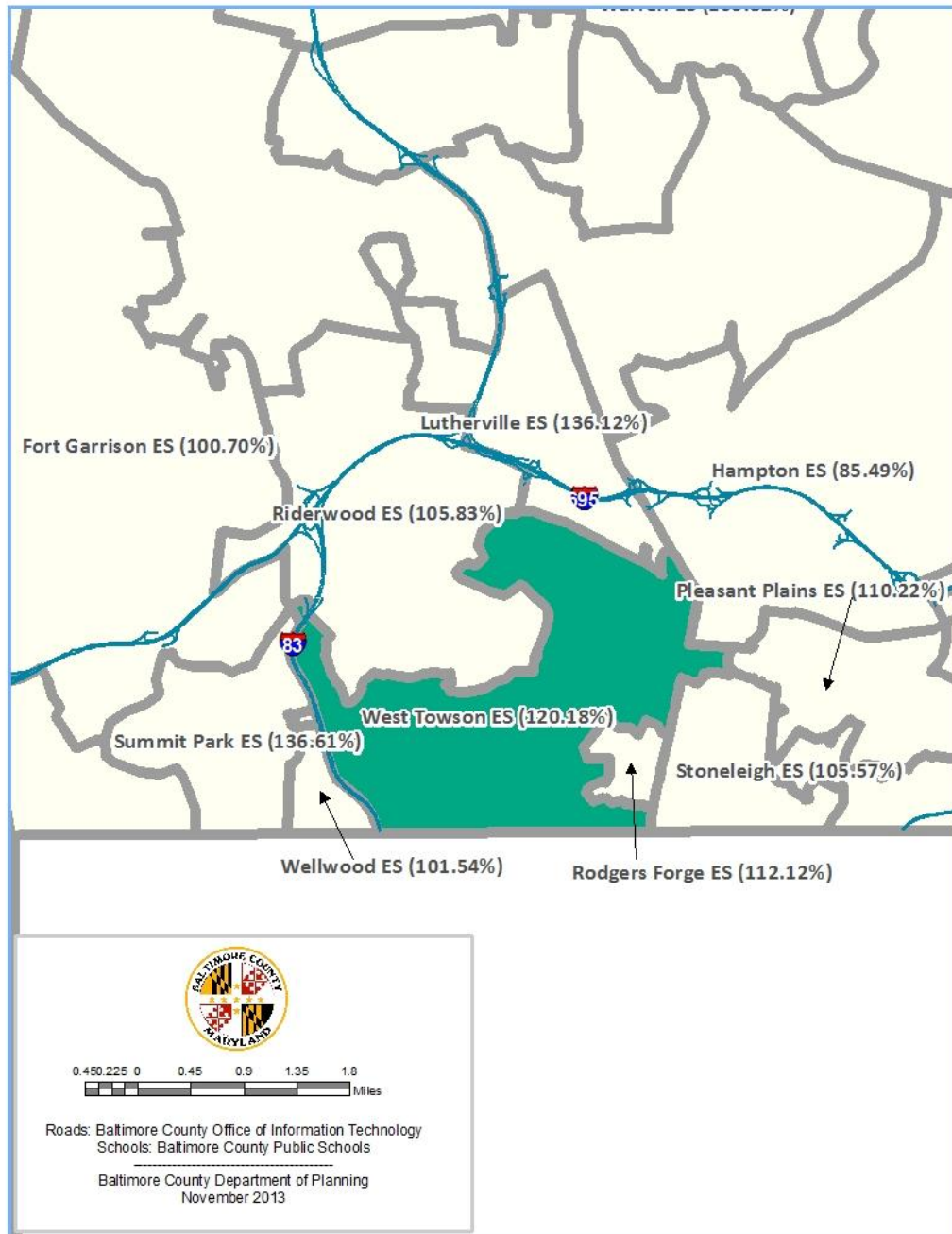
The Timonium Elementary School's enrollment of September 30, 2013 is 466. The State Rated Capacity (SRC) for this school is 395. Based on these numbers, Timonium Elementary School is 117.97% of SRC. A school impact analysis will be performed for each proposed development project to determine whether a school adjacent to Timonium Elementary School (see map above) is overcrowded under Section 32-6-103(f) of the Baltimore County Code. The Baltimore County Capital Budget for Fiscal Year 2012 provided \$20,360,000 to fund the construction of a new, 700-seat elementary school at Mays Chapel that is to open in Fall 2014.

Victory Villa Elementary School



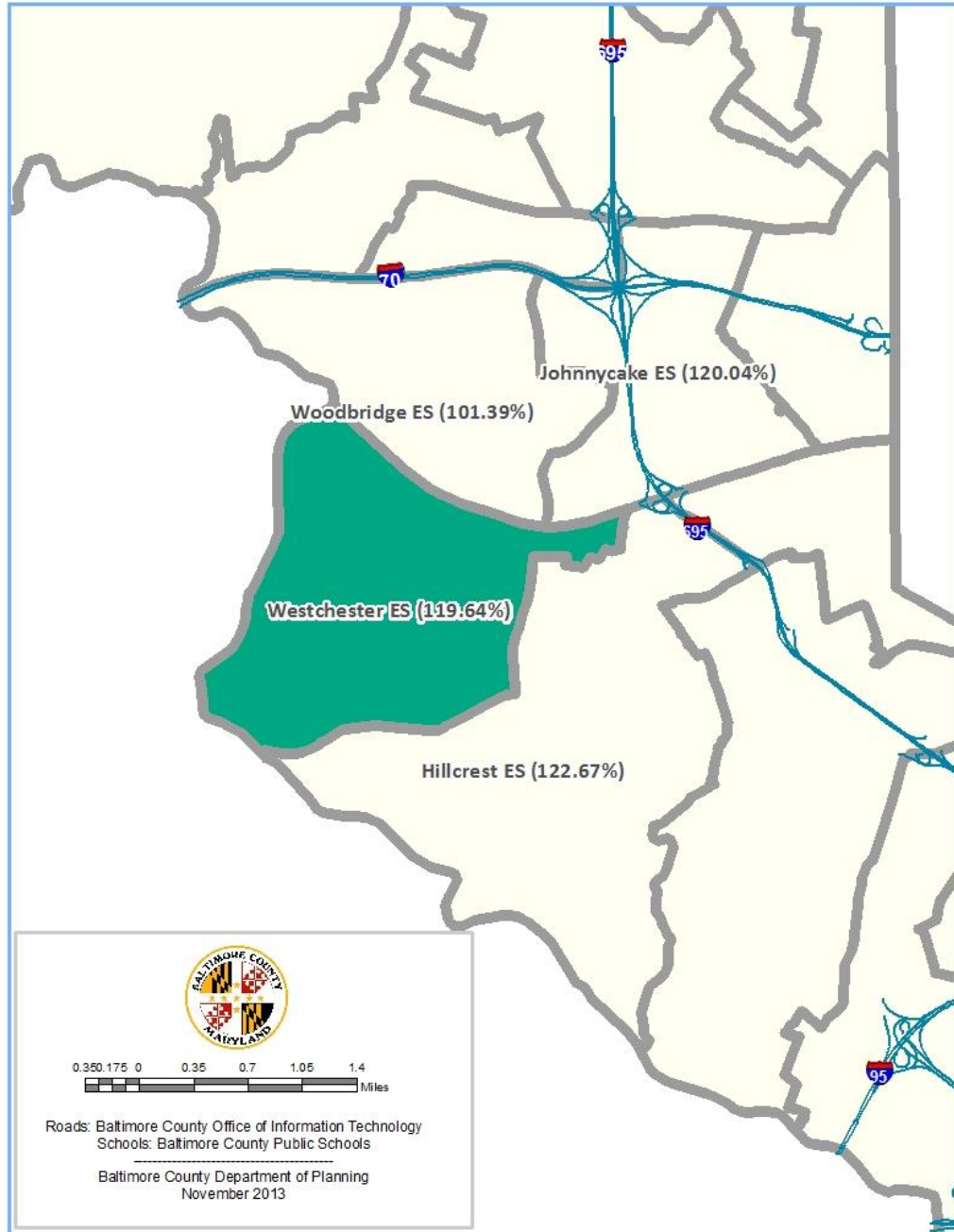
The Victory Villa Elementary School's enrollment of September 30, 2013 is 410. The State Rated Capacity (SRC) for this school is 326. Based on these numbers, Victory Villa Elementary School is 125.77% of SRC. A school impact analysis will be performed for each proposed development project to determine whether a school adjacent to Victory Villa Elementary School (see map above) is overcrowded under Section 32-6-103(f) of the Baltimore County Code.

West Towson Elementary School



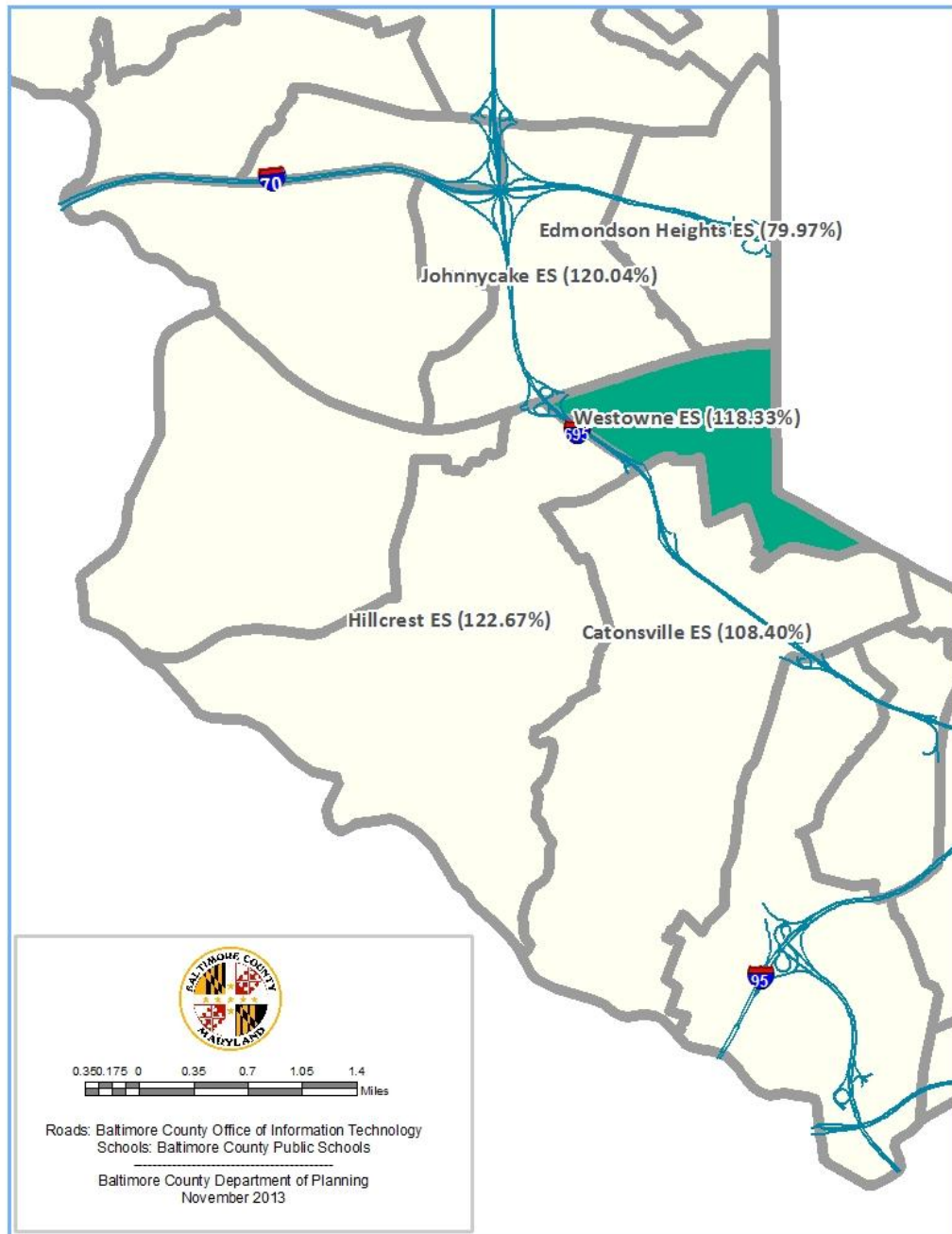
The West Towson Elementary School’s enrollment of September 30, 2013 is 542. The State Rated Capacity (SRC) for this school is 451. Based on these numbers, West Towson Elementary School is 120.18% of SRC. A school impact analysis will be performed for each proposed development project to determine whether a school adjacent to West Towson Elementary School (see map above) is overcrowded under Section 32-6-103(f) of the Baltimore County Code. The Baltimore County Capital Budget for Fiscal Year 2012 provided \$20,360,000 to fund the construction of a new, 700-seat elementary school at Mays Chapel that is to open in Fall 2014.

Westchester Elementary School



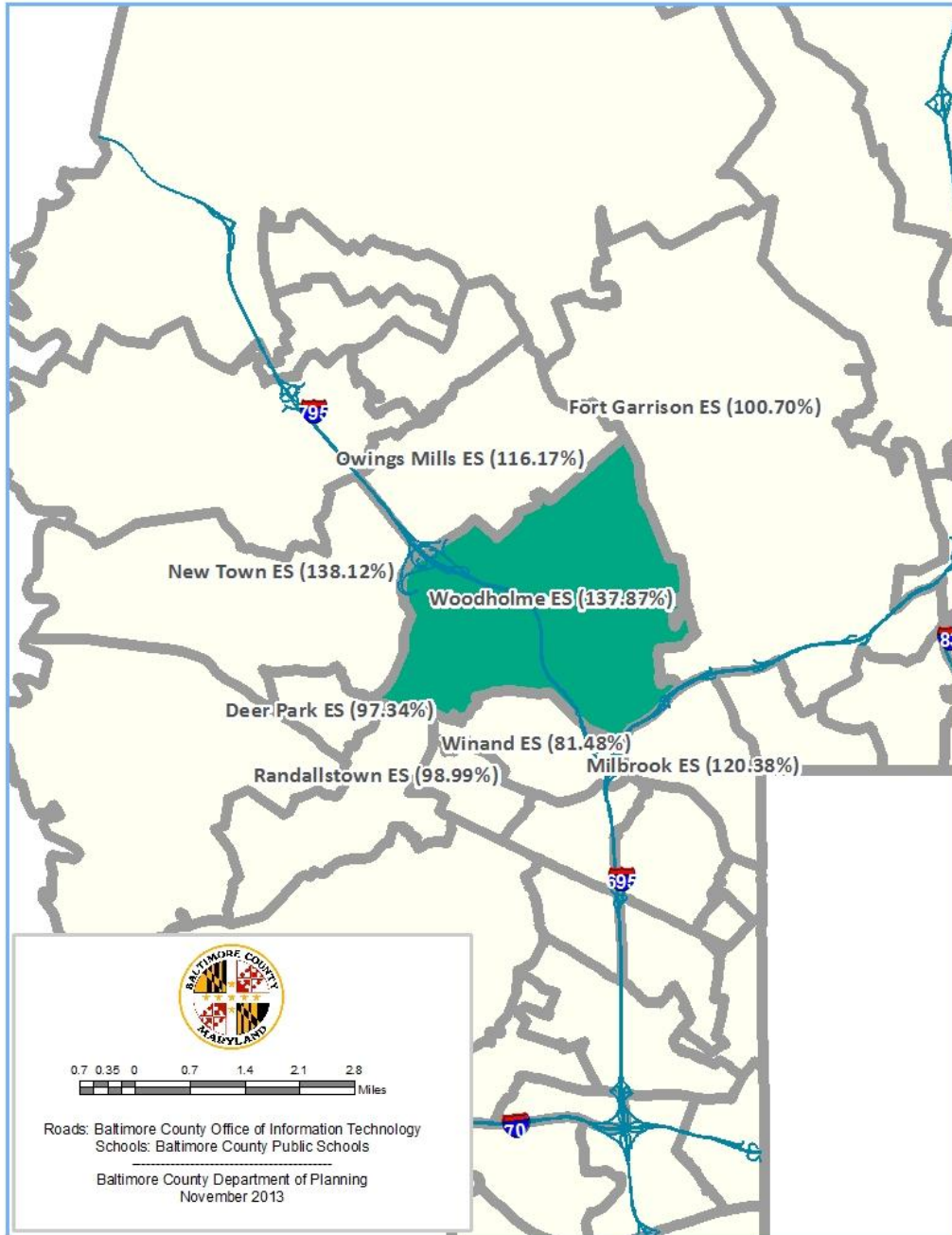
The Westchester Elementary School's enrollment of September 30, 2013 is 597. The State Rated Capacity (SRC) for this school is 499. Based on these numbers, Westchester Elementary School is 119.64% of SRC. A school impact analysis will be performed for each proposed development project to determine whether a school adjacent to Westchester Elementary School (see map above) is overcrowded under Section 32-6-103(f) of the Baltimore County Code.

Westowne Elementary School



The Westowne Elementary School's enrollment of September 30, 2013 is 568. The State Rated Capacity (SRC) for this school is 480. Based on these numbers, Westowne Elementary School is 118.33% of SRC. A school impact analysis will be performed for each proposed development project to determine whether a school adjacent to Westowne Elementary School (see map above) is overcrowded under Section 32-6-103(f) of the Baltimore County Code.

Woodholme Elementary School



The Woodholme Elementary School's enrollment of September 30, 2013 is 932. The State Rated Capacity (SRC) for this school is 676. Based on these numbers, Woodholme Elementary School is 138.87% of SRC. A school impact analysis will be performed for each proposed development project to determine whether a school adjacent to Woodholme Elementary School (see map above) is overcrowded under Section 32-6-103(f) of the Baltimore County Code. The Baltimore County Capital Budget for Fiscal Year 2014 funds the construction of a new, 700-seat elementary school in the Owings Mills area.

Appendix: Full Time Equivalent Enrollment and State Rated Capacity

School Name	9/30/13 FTE	State Rated Capacity (SRC)	FTE less SRC	FTE as % of SRC
Chadwick ES	490	408	82	120.10%
Dogwood ES	577	612	-35	94.28%
Featherbed Lane ES	541	654	-113	82.72%
Johnnycake ES	671	559	112	120.04%
Woodbridge ES	438	432	6	101.39%
Chapel Hill ES	772	636	136	121.38%
Gunpowder ES	499	499	0	100.00%
Joppa View ES	697	635	62	109.76%
Kingsville ES	352	349	3	100.86%
Perry Hall ES	665	528	137	125.95%
Vincent Farm ES	716	699	17	102.43%
Dundalk ES	687	590	97	116.44%
Chesapeake Terrace ES	293	292	1	100.34%
Logan ES	535	517	18	103.48%
Norwood ES	514	521	-7	98.66%
Elmwood ES	557	474	83	117.51%
Colgate ES	350	319	31	109.72%
Fullerton ES	553	463	90	119.44%
McCormick ES	370	380	-10	97.37%
Red House Run ES	547	486	61	112.55%
Shady Spring ES	608	499	109	121.84%
Sussex ES	429	380	49	112.89%
Fullerton ES	553	463	90	119.44%
Carney ES	545	574	-29	94.95%
Elmwood ES	557	474	83	117.51%
Joppa View ES	697	635	62	109.76%
Oakleigh ES	553	496	57	111.49%
Perry Hall ES	665	528	137	125.95%
Shady Spring ES	608	499	109	121.84%
Villa Cresta ES	653	637	16	102.51%
Vincent Farm ES	716	699	17	102.43%
Halethorpe ES	456	392	64	116.33%
Arbutus ES	430	405	25	106.17%
Catonsville ES	439	405	34	108.40%
Lansdowne ES	447	313	134	142.81%
Relay ES	527	415	112	126.99%

Appendix: Full Time Equivalent Enrollment and State Rated Capacity (cont'd)

School Name	9/30/13 FTE	State Rated Capacity (SRC)	FTE less SRC	FTE as % of SRC
Harford Hills ES	424	323	101	131.27%
Carney ES	545	574	-29	94.95%
Oakleigh ES	553	496	57	111.49%
Pine Grove ES	517	497	20	104.02%
Seven Oaks ES	389	428	-39	90.89%
Villa Cresta ES	653	637	16	102.51%
Hillcrest ES	817	666	151	122.67%
Catonsville ES	439	405	34	108.40%
Johnnycake ES	671	559	112	120.04%
Westchester ES	597	499	98	119.64%
Westowne ES	568	480	88	118.33%
Johnnycake ES	671	559	112	120.04%
Chadwick ES	490	408	82	120.10%
Edmondson Heights ES	471	589	-118	79.97%
Featherbed Lane ES	541	654	-113	82.72%
Hillcrest ES	817	666	151	122.67%
Westchester ES	597	499	98	119.64%
Westowne ES	568	480	88	118.33%
Woodbridge ES	438	432	6	101.39%
Lansdowne ES	447	313	134	142.81%
Baltimore Highlands ES	589	549	40	107.29%
Halethorpe ES	456	392	64	116.33%
Relay ES	527	415	112	126.99%
Riverview ES	513	572	-59	89.69%
Lutherville ES	554	407	147	136.12%
Hampton ES	554	648	-94	85.49%
Pinewood ES	596	566	30	105.30%
Riderwood ES	490	463	27	105.83%
Timonium ES	466	395	71	117.97%
West Towson ES	542	451	91	120.18%
Milbrook ES	384	319	65	120.38%
Bedford ES	285	309	-24	92.23%
Fort Garrison ES	434	431	3	100.70%
Powhatan ES	302	313	-11	96.49%
Scotts Branch ES	560	511	49	109.59%
Wellwood ES	462	455	7	101.54%
Winand ES	475	583	-108	81.48%
Woodholme ES	932	676	256	137.87%
Woodmoor ES	521	631	-110	82.57%

Appendix: Full Time Equivalent Enrollment and State Rated Capacity (cont'd)

School Name	9/30/13 FTE	State Rated Capacity (SRC)	FTE less SRC	FTE as % of SRC
New Town ES	971	703	268	138.12%
Cedarmere ES	463	474	-11	97.68%
Deer Park ES	439	451	-12	97.34%
Hernwood ES	410	415	-5	98.80%
Owings Mills ES	812	699	113	116.17%
Woodholme ES	932	676	256	137.87%
Owings Mills ES	812	699	113	116.17%
Cedarmere ES	463	474	-11	97.68%
Fort Garrison ES	434	431	3	100.70%
Franklin ES	482	473	9	101.90%
New Town ES	971	703	268	138.12%
Timber Grove ES	603	600	3	100.50%
Woodholme ES	932	676	256	137.87%
Padonia ES	453	311	142	145.66%
Pinewood ES	596	566	30	105.30%
Pot Spring ES	598	477	121	125.37%
Timonium ES	466	395	71	117.97%
Warren ES	418	395	23	105.82%
Perry Hall ES	665	528	137	125.95%
Carney ES	545	574	-29	94.95%
Chapel Hill ES	772	636	136	121.38%
Fullerton ES	553	463	90	119.44%
Gunpowder ES	499	499	0	100.00%
Joppa View ES	697	635	62	109.76%
Seven Oaks ES	389	428	-39	90.89%
Oakleigh ES	553	496	57	111.49%
Pot Spring ES	598	477	121	125.37%
Jacksonville ES	599	637	-38	94.03%
Padonia ES	453	311	142	145.66%
Pinewood ES	596	566	30	105.30%
Sparks ES	562	410	152	137.07%
Timonium ES	466	395	71	117.97%
Warren ES	418	395	23	105.82%
Reisterstown ES	519	450	69	115.33%
Cedarmere ES	463	474	-11	97.68%
Franklin ES	482	473	9	101.90%
Glyndon ES	461	520	-59	88.65%
Timber Grove ES	603	600	3	100.50%

Appendix: Full Time Equivalent Enrollment and State Rated Capacity (cont'd)

School Name	9/30/13 FTE	State Rated Capacity (SRC)	FTE less SRC	FTE as % of SRC
Relay ES	527	415	112	126.99%
Arbutus ES	430	405	25	106.17%
Catonsville ES	439	405	34	108.40%
Halethorpe ES	456	392	64	116.33%
Lansdowne ES	447	313	134	142.81%
Shady Spring ES	608	499	109	121.84%
Elmwood ES	557	474	83	117.51%
Essex ES	480	471	9	101.91%
Fullerton ES	553	463	90	119.44%
McCormick ES	370	380	-10	97.37%
Orems ES	328	313	15	104.79%
Red House Run ES	547	486	61	112.55%
Victory Villa ES	410	326	84	125.77%
Vincent Farm ES	716	699	17	102.43%
Sparks ES	562	410	152	137.07%
Fifth District ES	257	274	-17	93.80%
Franklin ES	482	473	9	101.90%
Jacksonville ES	599	637	-38	94.03%
Pinewood ES	596	566	30	105.30%
Pot Spring ES	598	477	121	125.37%
Seventh Districts ES	416	461	-45	90.24%
Summit Park ES	459	336	123	136.61%
Fort Garrison ES	434	431	3	100.70%
Riderwood ES	490	463	27	105.83%
Wellwood ES	462	455	7	101.54%
West Towson ES	542	451	91	120.18%
Timonium ES	466	395	71	117.97%
Carroll Manor ES	341	362	-21	94.20%
Hampton ES	554	648	-94	85.49%
Lutherville ES	554	407	147	136.12%
Padonia ES	453	311	142	145.66%
Pinewood ES	596	566	30	105.30%
Pot Spring ES	598	477	121	125.37%
Warren ES	418	395	23	105.82%

Appendix: Full Time Equivalent Enrollment and State Rated Capacity (cont'd)

School Name	9/30/13 FTE	State Rated Capacity (SRC)	FTE less SRC	FTE as % of SRC
Victory Villa ES	410	326	84	125.77%
Glenmar ES	402	371	31	108.36%
Martin Boulevard ES	271	291	-20	93.13%
Middlesex ES	504	517	-13	97.49%
Orems ES	328	313	15	104.79%
Shady Spring ES	608	499	109	121.84%
Vincent Farm ES	716	699	17	102.43%
West Towson ES	542	451	91	120.18%
Fort Garrison ES	434	431	3	100.70%
Hampton ES	554	648	-94	85.49%
Lutherville ES	554	407	147	136.12%
Pleasant Plains ES	561	509	52	110.22%
Riderwood ES	490	463	27	105.83%
Rodgers Forge ES	444	396	48	112.12%
Stoneleigh ES	739	700	39	105.57%
Summit Park ES	459	336	123	136.61%
Wellwood ES	462	455	7	101.54%
Westchester ES	597	499	98	119.64%
Hillcrest ES	817	666	151	122.67%
Jonnycake ES	671	559	112	120.04%
Woodbridge ES	438	432	6	101.39%
Westowne ES	568	480	88	118.33%
Catonsville ES	439	405	34	108.40%
Edmondson Heights ES	471	589	-118	79.97%
Hillcrest ES	817	666	151	122.67%
Johnnycake ES	671	559	112	120.04%
Woodholme ES	932	676	256	137.87%
Deer Park ES	439	451	-12	97.34%
Fort Garrison ES	434	431	3	100.70%
Milbrook ES	384	319	65	120.38%
New Town ES	971	703	268	138.12%
Owings Mills ES	812	699	113	116.17%
Randallstown ES	394	398	-4	98.99%
Winand ES	475	583	-108	81.48%